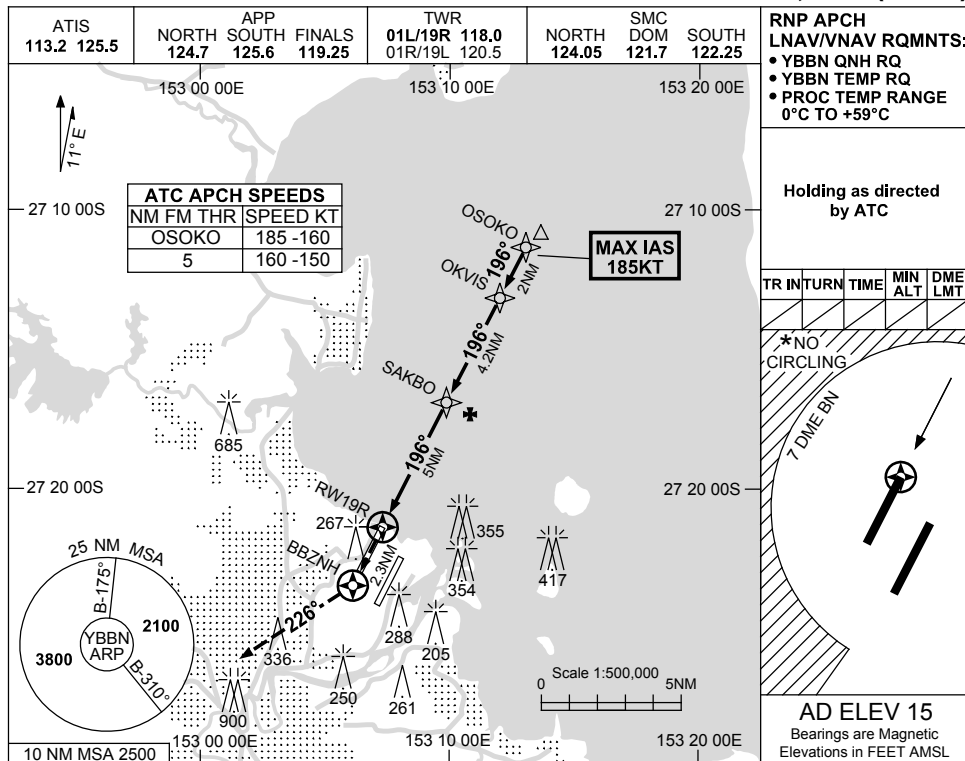


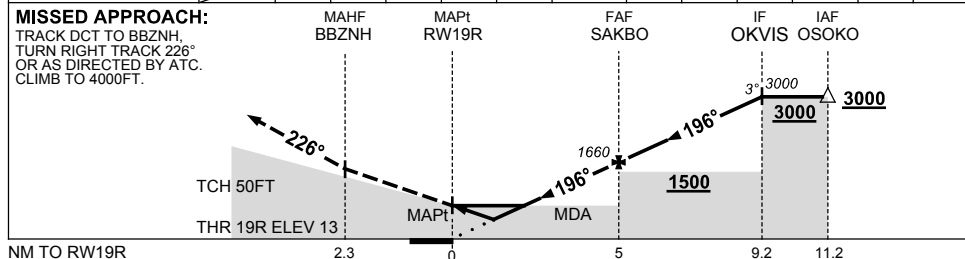
USE QNH

RNP Z RWY 19R  
**BRISBANE, QLD (YBBN)**

23 MAR 2023



NM TO NEXT WPT	RW19R	0.9	1.2	2	3	4	SAKBO	1	2	3	OKVIS		
ALT (3° APCH PATH)		350	430	700	1020	1340	1660	1970	2290	2610	3000		



**NOTES**

1. MAX IAS:  
 INITIAL : 185KT.
- \* 2. CAT D ACFT NO  
 CIRCLING WEST OF  
 01R/19L BEYOND  
 7 DME BN.
3. ACFT MAY BE  
 RADAR VECTORED  
 TO OSOKO.

CATEGORY	A	B	C	D
LNAV/VNAV		350 (337-1.2)		
LNAV		430 (415-1.6)		
CIRCLING *	650 (635-2.4)		780 (765-4.0)	850 (835-5.0)
ALTERNATE	(1135-4.4)		(1265-6.0)	(1335-7.0)

Changes: VIS MINIMA.

BBNGN15-174