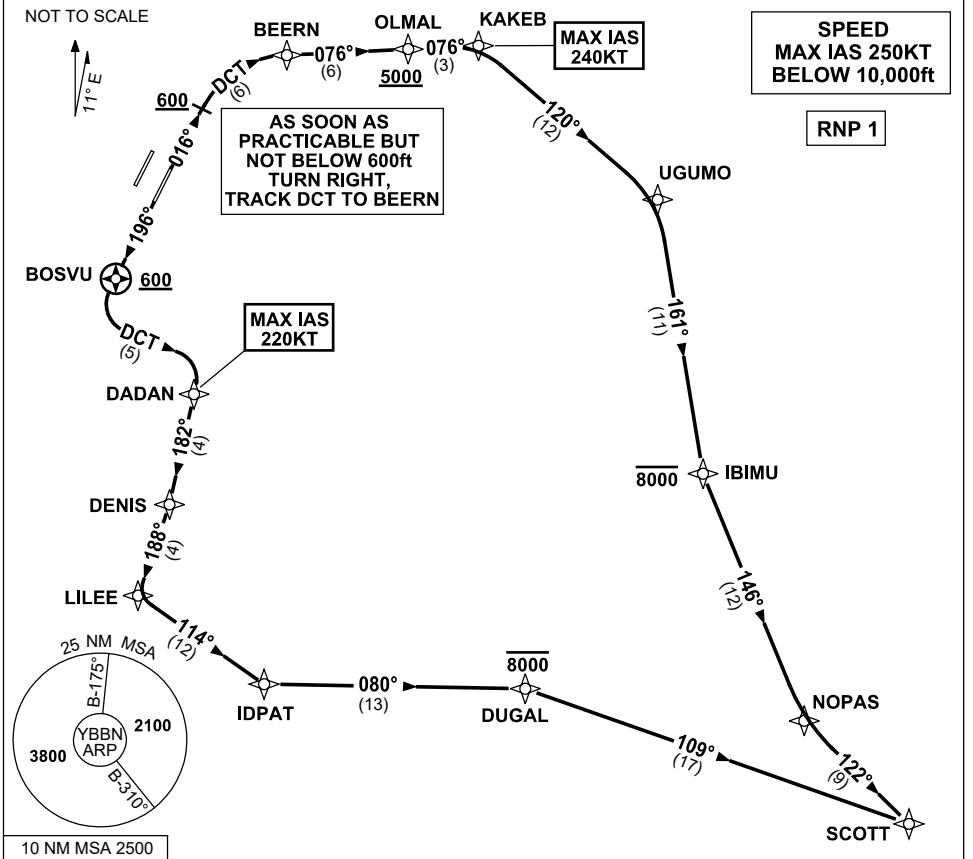


**STANDARD INSTRUMENT DEPARTURES (SID)  
SCOTT FOUR DEPARTURE (RNAV) RWY 01R/19L  
BRISBANE, QLD (YBBN)**

**28 NOV 2024**

ATIS 113.2 125.5	ACD 118.85	NORTH 124.05	SMC DOM 121.7	SOUTH 122.25	TWR 01R/19L 120.5 01L/19R 118.0	DEP 118.45	Bearings are Magnetic Elevations in FEET AMSL
---------------------	---------------	-----------------	---------------------	-----------------	---------------------------------------	---------------	--



**DEPARTURE: SCOTT FOUR**

**RWY 01R**

GRAD 3.3%  
MAX IAS 240KT until KAKEB

- Track 016°
- AT or ABV 600ft turn RIGHT, track DCT to BEERN
- Turn RIGHT, track 076° to OLMAL  
**Cross** OLMAL AT or ABV 5000ft (RQ GRAD TO OLMAL: 6.2%)
- Track 076° to KAKEB
- Turn RIGHT, track 120° to UGUMO
- Turn RIGHT, track 161° to IBIMU  
**Cross** IBIMU AT or BLW 8000ft
- Turn LEFT, track 146° to NOPAS
- Turn LEFT, track 122° to SCOTT

**RWY 19L**

GRAD 3.3%  
MAX IAS 220KT until DADAN

- Track 196°
- After passing BOSVU **AND** 600ft turn LEFT, track DCT to DADAN
- Turn RIGHT, track 182° to DENIS
- Turn RIGHT, track 188° to LILEE
- Turn LEFT, track 114° to IDPAT
- Turn LEFT, track 080° to DUGAL  
**Cross** DUGAL AT or BLW 8000ft
- Turn RIGHT, track 109° to SCOTT

Changes: NEW WAYPOINTS, SID INSTRUCTION, VALIDITY INDICATOR, Editorial.

BBNDP24-181