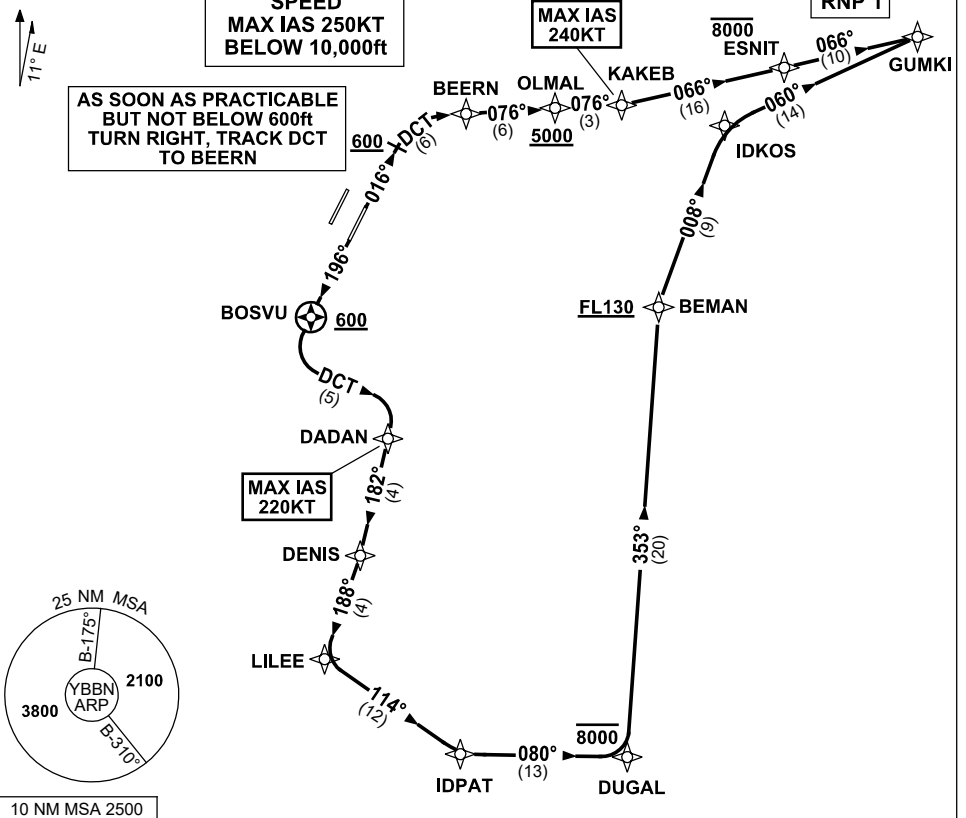


**STANDARD INSTRUMENT DEPARTURES (SID)  
GUMKI TWO DEPARTURE (RNAV) RWY 01R/19L  
BRISBANE, QLD (YBBN)**

28 NOV 2024

ATIS 113.2 125.5	ACD 118.85	NORTH 124.05	SMC DOM 121.7	SOUTH 122.25	TWR 01R/19L 120.5 01L/19R 118.0	DEP 118.45	Bearings are Magnetic Elevations in FEET AMSL
---------------------	---------------	-----------------	---------------------	-----------------	---------------------------------------	---------------	--

NOT TO SCALE



10 NM MSA 2500

- DEPARTURE: GUMKI TWO**
- RWY 01R**  
 GRAD 3.3%  
 MAX IAS 240KT until KAKEB
- Track 016°
  - AT or ABV 600ft turn RIGHT, track DCT to BEERN
  - Turn RIGHT, track 076° to OLMAL  
**Cross** OLMAL AT or ABV 5000ft (RQ GRAD TO OLMAL: 6.2%)
  - Track 076° to KAKEB
  - Turn LEFT, track 066° to ESNIT  
**Cross** ESNIT AT or BLW 8000ft
  - Track 066° to GUMKI
- RWY 19L**  
 GRAD 3.3%  
 MAX IAS 220KT until DADAN
- Track 196°
  - After passing BOSVU **AND** 600ft turn LEFT, track DCT to DADAN
  - Turn RIGHT, track 182° to DENIS
  - Turn RIGHT, track 188° to LILEE
  - Turn LEFT, track 114° to IDPAT
  - Turn LEFT, track 080° to DUGAL  
**Cross** DUGAL AT or BLW 8000ft
  - Turn LEFT, track 353° to BEMAN  
**Cross** BEMAN AT or ABV FL130 (RQ GRAD TO BEMAN: 3.8%)
  - Turn RIGHT, track 008° to IDKOS
  - Turn RIGHT, track 060° to GUMKI

Changes: NEW WAYPOINTS, SID INSTRUCTION, VALIDITY INDICATOR, Editorial. BBNDP23-181