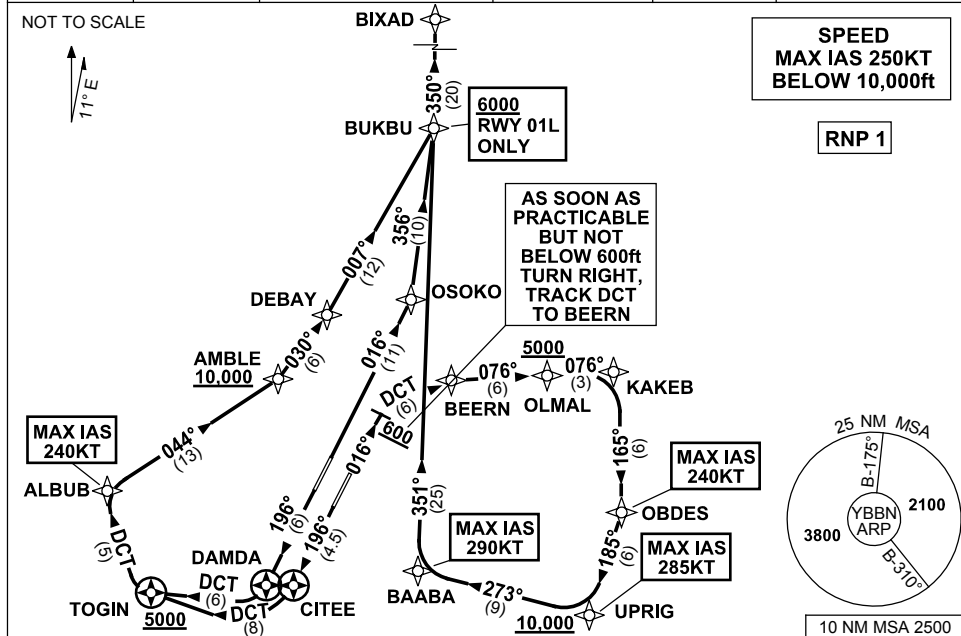


**STANDARD INSTRUMENT DEPARTURES (SID)
BIXAD TWO DEPARTURE (RNAV)
BRISBANE, QLD (YBBN)**

28 NOV 2024

ATIS 113.2 125.5	ACD 118.85	NORTH 124.05	SMC DOM 121.7	SOUTH 122.25	TWR 01R/19L 120.5 01L/19R 118.0	DEP 118.45 133.45	Bearings are Magnetic Elevations in FEET AMSL
---------------------	---------------	-----------------	---------------------	-----------------	---------------------------------------	----------------------	--



DEPARTURE: BIXAD TWO

RWY 01L

- GRAD 3.3% (5.3% TO 3000ft)
- Track 016° to OSOKO
 - Turn LEFT, track 356° to BUKBU
Cross BUKBU AT or ABV 6000ft
(RQ GRAD TO BUKBU: 4.7%)
 - Turn LEFT, track 350° to BIXAD

RWY 19R

- GRAD 3.3%
MAX IAS 240KT until ALBUB
- Track 196° to DAMDA
 - Turn RIGHT, track DCT to TOGIN
Cross TOGIN AT or ABV 5000ft
(RQ GRAD TO TOGIN: 6.9%)
 - Turn RIGHT, track DCT° to ALBUB
 - Turn RIGHT, track 044° to AMBLE
Cross AMBLE AT or ABV 10,000ft
(RQ GRAD TO AMBLE: 4.8% FM TOGIN)
 - Turn LEFT, track 030° to DEBAY
 - Turn LEFT, track 007° to BUKBU
 - Turn LEFT, track 350° to BIXAD

RWY 01R

- GRAD 3.3%
MAX IAS 240KT until OBDES
- Track 016°
 - AT or ABV 600FT turn RIGHT, track DCT to BEERN
 - Turn RIGHT, track 076° to OLMAL
Cross OLMAL AT or ABV 5000ft
(RQ GRAD TO OLMAL: 6.2%)
 - Track 076° to KAKEB
 - Turn RIGHT, track 165° to OBDES
MAX IAS 285KT until UPRIG
 - Turn RIGHT, track 185° to UPRIG
Cross UPRIG AT or ABV 10,000ft
(RQ GRAD TO UPRIG: 6.2% FM OLMAL)
 - MAX IAS 290KT until BAABA
 - Turn RIGHT, track 273° to BAABA
 - Turn RIGHT, track 351° to BUKBU
 - Track 350° to BIXAD

RWY 19L

- GRAD 3.3%
MAX IAS 240KT until ALBUB
- Track 196° to CITEE
 - Turn RIGHT, track DCT to TOGIN
Cross TOGIN AT or ABV 5000ft
(RQ GRAD TO TOGIN: 7%)
 - Turn RIGHT, track DCT° to ALBUB
 - Turn RIGHT, track 044° to AMBLE
Cross AMBLE AT or ABV 10,000ft
(RQ GRAD TO AMBLE: 4.8% FM TOGIN)
 - Turn LEFT, track 030° to DEBAY
 - Turn LEFT, track 007° to BUKBU
 - Turn LEFT, track 350° to BIXAD

Changes: NEW WAYPOINTS, SID 01R INSTRUCTION, VALIDITY INDICATOR, CHART TITLE, Editorial.

BBNDP18-181