

**STANDARD INSTRUMENT DEPARTURES (SID)
SANEG TWO DEPARTURE (RNAV) RWY 01R/19L
BRISBANE, QLD (YBBN)**

28 NOV 2024

ATIS 113.2 125.5	ACD 118.85	NORTH 124.05	SMC DOM 121.7	SOUTH 122.25	TWR 01R/19L 120.5 01L/19R 118.0	DEP 118.45	Bearings are Magnetic Elevations in FEET AMSL
---------------------	---------------	-----------------	---------------------	-----------------	---------------------------------------	---------------	--

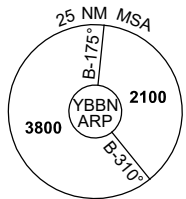
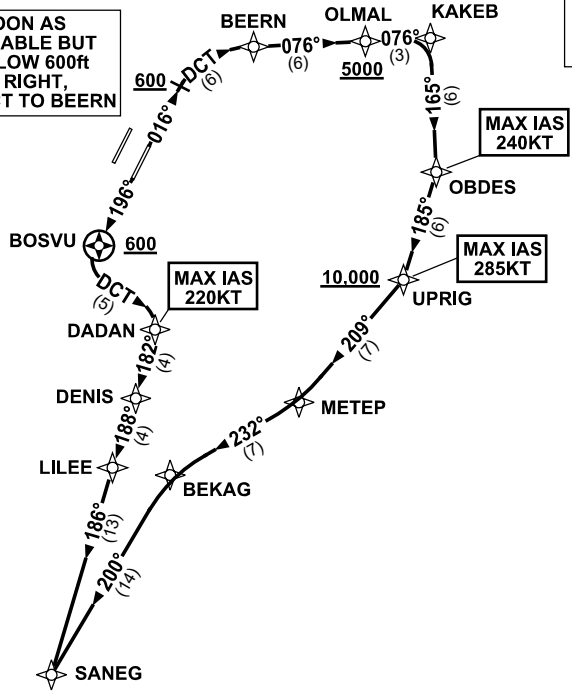
NOT TO SCALE



**AS SOON AS PRACTICABLE BUT NOT BELOW 600ft
TURN RIGHT,
TRACK DCT TO BEERN**

**SPEED
MAX IAS 250KT
BELOW 10,000ft**

RNP 1



DEPARTURE: SANEG TWO

RWY 01R

GRAD 3.3%
MAX IAS 240KT until OBDES

- Track 016°
- AT or ABV 600ft turn RIGHT, track DCT to BEERN
- Turn RIGHT, track 076° to OLMAL
Cross OLMAL AT or ABV 5000ft (RQ GRAD TO OLMAL: 6.2%)
- Track 076° to KAKEB
- Turn RIGHT, track 165° to OBDES
MAX IAS 285KT until UPRIG
- Turn RIGHT, track 185° to UPRIG
Cross UPRIG AT or ABV 10,000ft (RQ GRAD TO UPRIG: 6.2% FM OLMAL)
- Turn RIGHT, track 209° to METEPE
- Turn RIGHT, track 232° to BEKAG
- Turn LEFT, track 200° to SANEG

RWY 19L

GRAD 3.3%
MAX IAS 220KT until DADAN

- Track 196°
- After passing BOSVU **AND** 600ft turn LEFT, track DCT to DADAN
- Turn RIGHT, track 182° to DENIS
- Turn RIGHT, track 188° to LILEE
- Turn LEFT, track 186° to SANEG