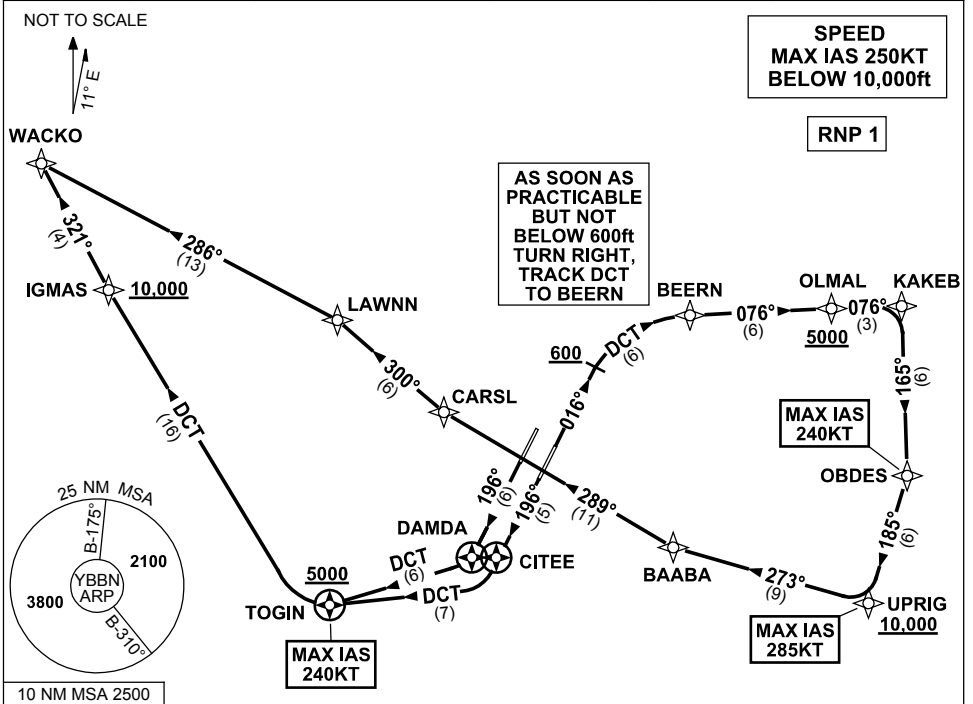


**STANDARD INSTRUMENT DEPARTURES (SID)
WACKO FOUR DEPARTURE (RNAV) RWY 01R/19L/19R
BRISBANE, QLD (YBBN)**

28 NOV 2024

ATIS 113.2 125.5	ACD 118.85	NORTH 124.05	SMC DOM 121.7	SOUTH 122.25	TWR 01R/19L 120.5 01L/19R 118.0	DEP 118.45 133.45	Bearings are Magnetic Elevations in FEET AMSL
---------------------	---------------	-----------------	---------------------	-----------------	---------------------------------------	----------------------	--



DEPARTURE: WACKO FOUR

RWY 01R

GRAD 3.3%
MAX IAS 240KT until OBDES

- Track 016°
- AT or ABV 600ft turn RIGHT, track DCT to BEERN
- Turn RIGHT, track 076° to OLMAL
Cross OLMAL AT or ABV 5000ft
(RQ GRAD TO OLMAL: 6.2%)
- Track 076° to KAKEB
- Turn RIGHT, track 165° to OBDES
MAX IAS 285KT until UPRIG
- Turn RIGHT, track 185° to UPRIG
Cross UPRIG AT or ABV 10,000ft
(RQ GRAD TO UPRIG: 6.2% FM OLMAL)
- Turn RIGHT, track 273° to BAABA
- Turn RIGHT, track 289° to CARSL
- Turn RIGHT, track 300° to LAWNN
- Turn LEFT, track 286° to WACKO

RWY 19L

GRAD 3.3%
MAX IAS 240KT until TOGIN

- Track 196° to CITEE
- Turn RIGHT, track DCT to TOGIN
Cross TOGIN AT or ABV 5000ft
(RQ GRAD TO TOGIN: 7.0%)
- Turn RIGHT, track DCT to IGMAS
Cross IGMAS AT or ABV 10,000ft
(RQ GRAD TO IGMAS: 5.0% FM TOGIN)
- Track 321° to WACKO

RWY 19R

GRAD 3.3%
MAX IAS 240KT UNTIL PASSING TOGIN

- Track 196° to DAMDA
- Turn RIGHT, track DCT to TOGIN
Cross TOGIN AT or ABV 5000ft
(RQ GRAD TO TOGIN: 6.9%)
- Turn RIGHT, track DCT to IGMAS
Cross IGMAS AT or ABV 10,000ft
(RQ GRAD TO IGMAS: 5.0% FM TOGIN)
- Track 321° to WACKO

Changes: NEW WAYPOINTS, SID INSTRUCTION, VALIDITY INDICATOR, CHART TITLE, Editorial.

BBNP10-181