

**STANDARD INSTRUMENT DEPARTURES (SID)
BRISBANE FOUR DEPARTURE (RADAR)
BRISBANE, QLD (YBBN)**

9 SEP 2021

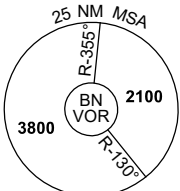
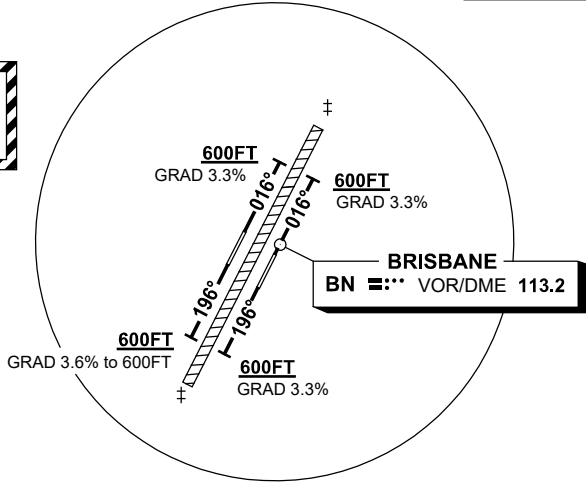
ATIS 113.2 125.5	ACD 118.85	NORTH 124.05	SMC DOM 121.7	SOUTH 122.25	TWR 01R/19L 120.5 01L/19R 118.0	DEP 118.45 133.45	Bearings are Magnetic Elevations in FEET AMSL
---------------------	---------------	-----------------	---------------------	-----------------	---------------------------------------	----------------------	--

NOT TO SCALE



**SPEED
MAX IAS 250KT
BELOW 10,000FT**

⚠ **CAUTION**
PARALLEL RUNWAY OPS
DO NOT TURN TOWARDS
OTHER RUNWAY



10 NM MSA 2500

DEPARTURE: BRISBANE FOUR (RADAR)

RWY 01L

GRAD 3.3% to 600FT (5.8% TO 3200FT)

- Track 016°
- AT or ABV 600FT but not before DER turn to assigned heading or track
- When directed, contact Departures for radar vectors

RWY 19R

GRAD 3.6% to 600FT (5.3% TO 3700FT)

- Track 196°
- AT or ABV 600FT but not before DER turn to assigned heading or track
- When directed, contact Departures for radar vectors

RWY 01R

GRAD 3.3% to 600FT (4.9% TO 3800FT)

- Track 016°
- AT or ABV 600FT but not before DER turn to assigned heading or track
- When directed, contact Departures for radar vectors

RWY 19L

GRAD 3.3% to 600FT (5.6% TO 3400FT)

- Track 196°
- AT or ABV 600FT but not before DER turn to assigned heading or track
- When directed, contact Departures for radar vectors

COMMUNICATIONS FAILURE PROCEDURE

On recognition of communications failure

- Squawk 7600
- Maintain last assigned vector for two minutes, and
- CLIMB IF NECESSARY TO MINIMUM SAFE ALTITUDE, to maintain terrain clearance, then
- proceed in accordance with the latest ATC route clearance acknowledged.