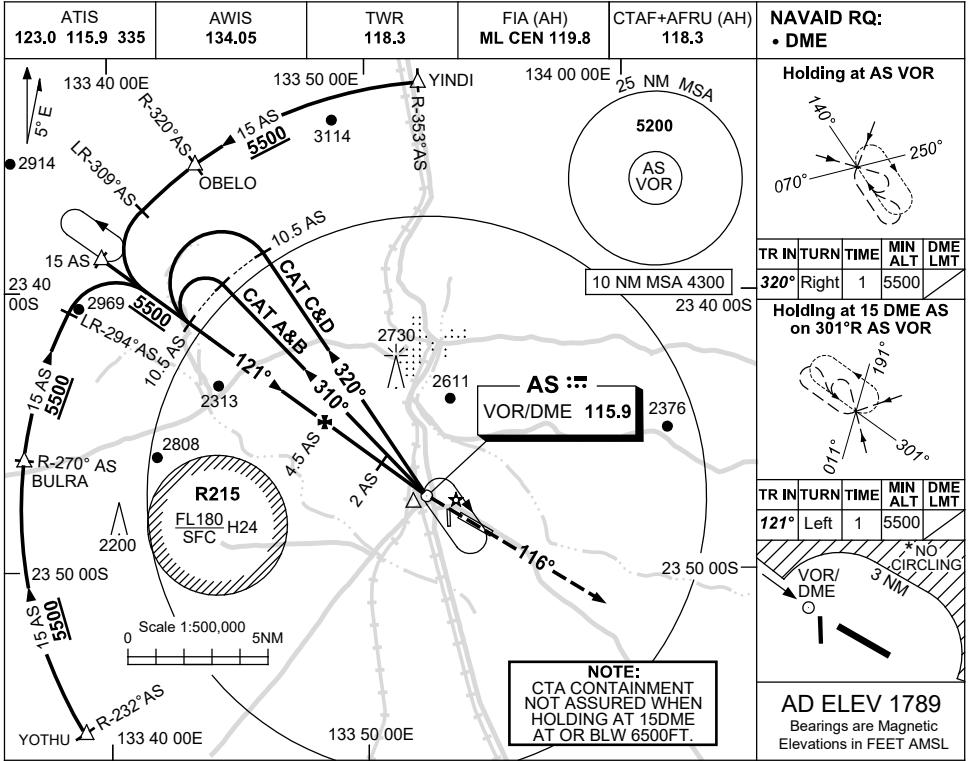


USE QNH

VOR RWY 12

28 NOV 2024

ALICE SPRINGS, NT (YBAS)



Holding at AS VOR

TR	IN	TURN	TIME	MIN ALT	DME LMT
320°	Right	1	5500		

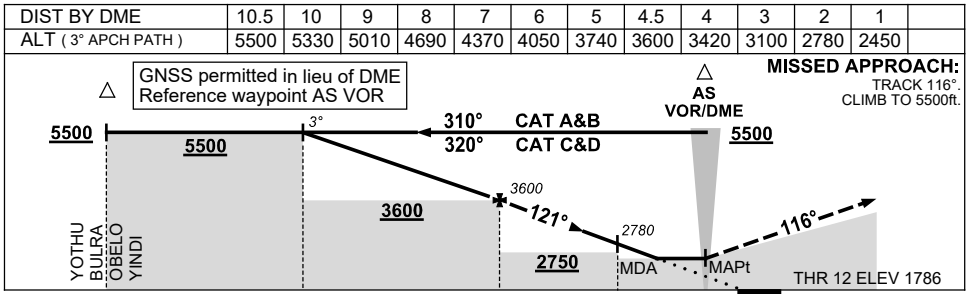
Holding at 15 DME AS on 301°R AS VOR

TR	IN	TURN	TIME	MIN ALT	DME LMT
121°	Left	1			

NO CIRCLING

VOR/DME 3 NM

AD ELEV 1789
Bearings are Magnetic
Elevations in FEET AMSL



CATEGORY	A	B	C	D
S-I VOR/DME	2450 (661-2.9)			
CIRCLING *	2570 (781-2.4)		2990 (1201-4.0)	
ALTERNATE ‡	(1281-4.4)		(1701-7.0)	

NOTES

- MAX IAS:
INITIAL : 210KT.
HOLDING : 185KT.
HLDG NOT ABOVE FL120.
- SPECIAL ALTN MNM 800/4.0KM.
- NO CIRCLING N OF RWY 12 / 30 BEYOND 3NM.

Changes: FROM SUP H107/24.

BASV001-181