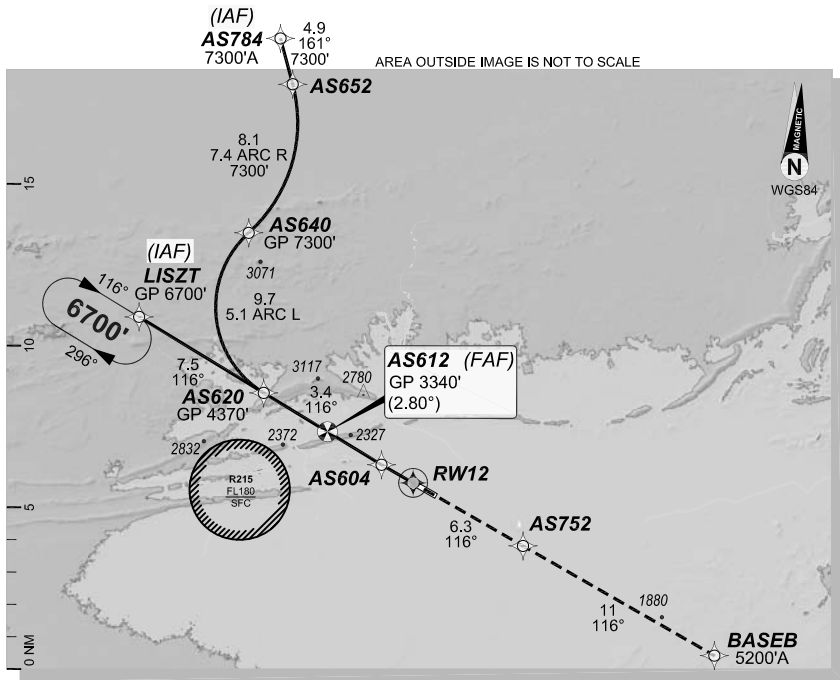


1 DEC 2022

ALICE SPRINGS, NT (YBAS)

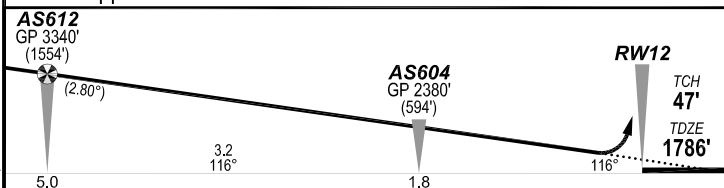
GE PROPRIETARY INFORMATION

ATIS 123.0 115.9 335			AWIS 134.05		TWR 118.3	FIA (AH) ML CEN 119.8	CTAF + AFRU (AH) 118.3
RNP AR RNV U 12		Apt Elev. 1789' TDZE 1786'	AS612 (FAF) GP 3340' (2.80°)		Trans Level FL110		



MISSED APPROACH:

Climb to **5200'** via the RNP AR
Missed Approach track to **BASEB**.



NOTES:

- YBAS ACT QNH RQ.
- Minimum MAP gradient (All Engines) 3.0% to 5200FT.
- APCH Path does not coincide with PAPI glide path 3°.

RNP 0.30		DA(H) 2104' (318')	
HIALS OUT			
C	C	C	C
		800 m	1700 m



10 NM MSA 4300

FOR CASA APPROVED OPERATORS ONLY

Changes: PROC NAME, RNAV (RNP) TO RNP AR.

BASGN05-173

DO NOT USE FOR NAVIGATION

Prepared by GE Aviation



202208021125COPYRIGHT 2022 NAVERUS, INC. USA