

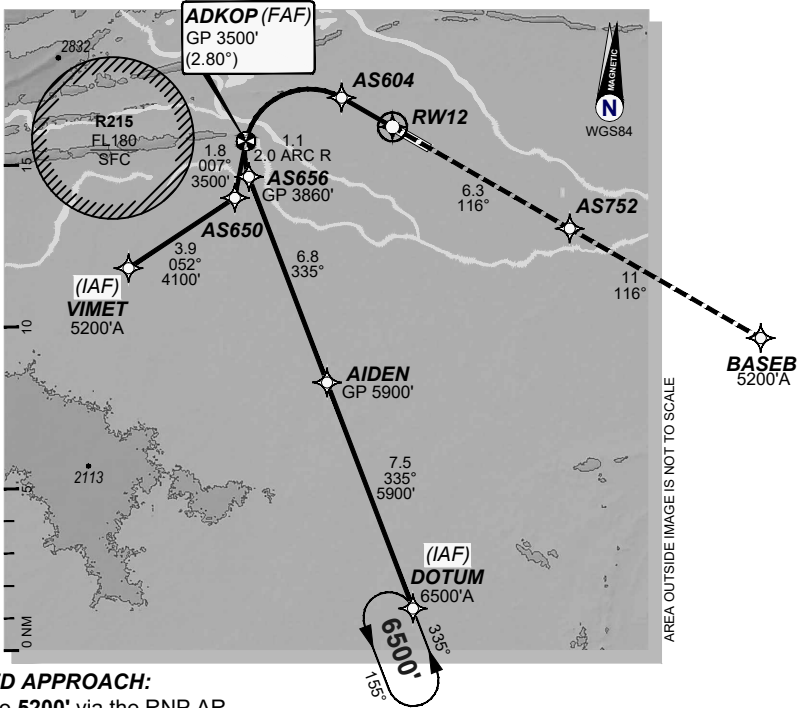
USE QNH

RNP P RWY 12 (AR)

21 MAR 2024

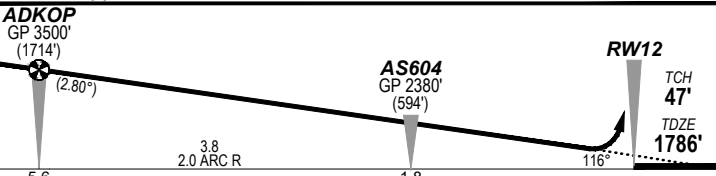
ALICE SPRINGS, NT (YBAS)

ATIS	AWIS	TWR	FIA (AH)	CTAF + AFRR (AH)
123.0 115.9 335	134.05	118.3	ML CEN 119.8	118.3
RNP AR RNP P 12	Apt Elev. 1789' TDZE 1786'	ADKOP (FAF) GP 3500' (2.80°)	Trans Level FL110	



**MISSED APPROACH:**

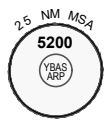
Climb to **5200'** via the RNP AR  
Missed Approach track to **BASEB**.



**NOTES:**

- YBAS ACT QNH RQ.
- Minimum MAP gradient (All Engines) 3.0% to 5200FT.
- APCH Path does not coincide with PAPI glide path 3°.

ADKOP GP 3500' (1714') (2.80°)		AS604 GP 2380' (594')		RWY12 TCH 47' TDZE 1786'	
5.6		3.8 2.0 ARC R		1.8	
RNP 0.30			DA(H) 2104' (318')		
C			HIALS OUT		
C		C		C	
800 m		1700 m		10 NM MSA 4300	



**FOR CASA APPROVED OPERATORS ONLY**

202310241957COPYRIGHT 2023 GE Digital USA, GE PROPRIETARY INFORMATION

Changes: from SUP H81/23

**DO NOT USE FOR NAVIGATION**

BASGN04-178

© Airservices Australia

Prepared by GE Aviation

