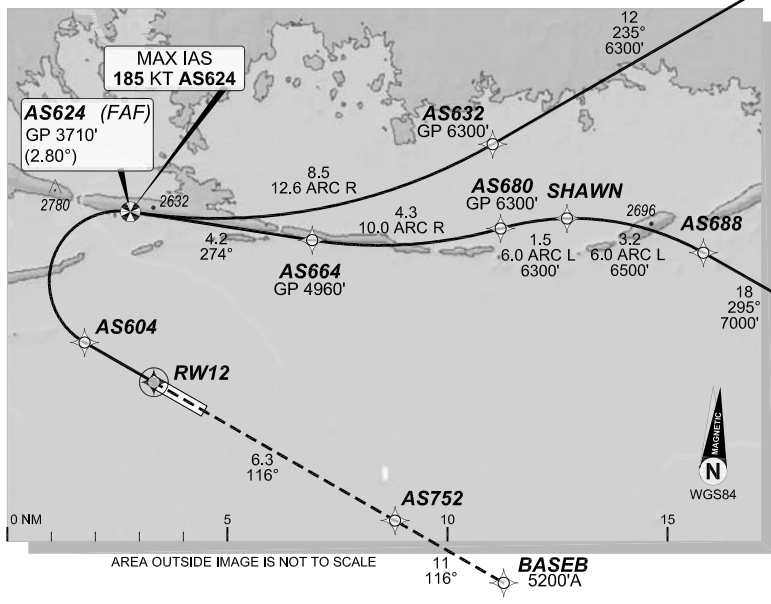


1 DEC 2022

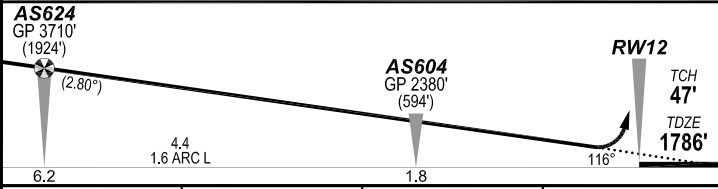
ALICE SPRINGS, NT (YBAS)

GE PROPRIETARY INFORMATION

ATIS 123.0 115.9 335			AWIS 134.05		TWR 118.3		FIA (AH) ML CEN 119.8		CTAF + AFRU (AH) 118.3		
RNP AR RNV M 12		Apt Elev. 1789' TDZE 1786'		AS624 (FAF) GP 3710' (2.80°)			Trans Level FL110				

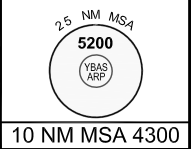


MISSED APPROACH:
Climb to **5200'** via the RNP AR
Missed Approach track to **BASEB**.



NOTES:
- YBAS ACT QNH RQ.
- Minimum MAP gradient (All Engines) 3.0% to 5200FT.
-APCH Path does not coincide with PAPI glide path 3°.

RNP 0.30		DA(H) 2104' (318')	
HIALS OUT			
C	C	C	C
		800 m	1700 m



FOR CASA APPROVED OPERATORS ONLY

Changes: PROC NAME, SPEED NOTE AS624, RNAV (RNP) TO RNP AR.

DO NOT USE FOR NAVIGATION
Prepared by GE Aviation

BASGN03-173

202208021123COPYRIGHT 2022 NAVERUS, INC. USA

