

**FOR CASA APPROVED OPERATORS ONLY**  
**USE QNH**                      **OCTAV SIX DEPARTURE**  
**ALICE SPRINGS, NT (YBAS)**

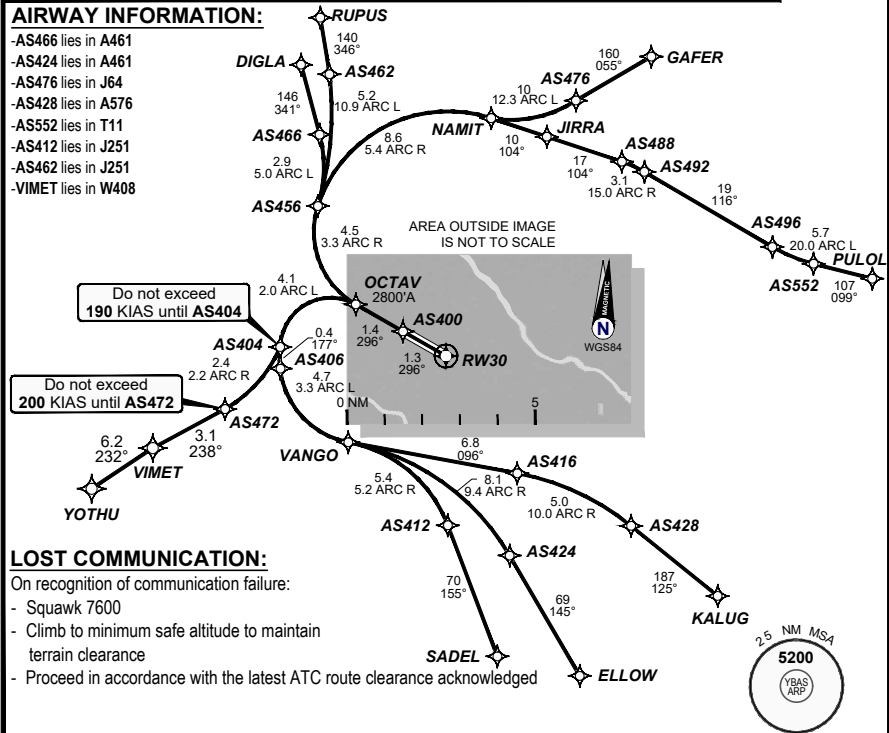
**21 MAR 2024**

Apt Elev <b>1789'</b>	Trans ALT <b>10000'</b>	ATIS <b>123.0 115.9 335</b>	AWIS <b>134.05</b>	TWR <b>118.3</b>	FIA (AH) <b>ML CEN 119.8</b>	CTAF + AFRU (AH) <b>118.3</b>
--------------------------	----------------------------	--------------------------------	-----------------------	---------------------	---------------------------------	----------------------------------

<b>OCTAV SIX</b> <b>RNAV (RNP) DEPARTURE</b> <b>RNP 0.30</b> <b>(OCTAV6.OCTAV)</b> <b>RWY 30</b>	Minimum climb gradient (All Engines) 11.6% to 2800FT.

**TAKE-OFF:**  
**RWY 30:** Fly the RNAV (RNP) track to **OCTAV** and cross **OCTAV** at or above **2800'**. Thence:

**TRANSITIONS:**  
**(OCTAV6.DIGLA):** Fly the RNAV (RNP) track to **DIGLA**.  
**(OCTAV6.ELLOW):** Fly the RNAV (RNP) track to **ELLOW**. Do not exceed **190 KIAS** until **AS404**.  
**(OCTAV6.GAFER):** Fly the RNAV (RNP) track to **GAFER**.  
**(OCTAV6.KALUG):** Fly the RNAV (RNP) track to **KALUG**. Do not exceed **190 KIAS** until **AS404**.  
**(OCTAV6.PULOL):** Fly the RNAV (RNP) track to **PULOL**.  
**(OCTAV6.SADEL):** Fly the RNAV (RNP) track to **SADEL**. Do not exceed **190 KIAS** until **AS404**.  
**(OCTAV6.RUPUS):** Fly the RNAV (RNP) track to **RUPUS**.  
**(OCTAV6.YOTHU):** Fly the RNAV (RNP) track to **YOTHU**. Do not exceed **190 KIAS** until **AS404**.  
 Do not exceed **200 KIAS** until **AS472**.



**LOST COMMUNICATION:**  
 On recognition of communication failure:

- Squawk 7600
- Climb to minimum safe altitude to maintain terrain clearance
- Proceed in accordance with the latest ATC route clearance acknowledged

**DO NOT USE FOR NAVIGATION**

