

FOR CASA APPROVED OPERATORS ONLY

USE QNH

MUDMO ONE DEPARTURE

ALICE SPRINGS, NT (YBAS)

21 MAR 2024

Apt Elev 1789'	Trans ALT 10000'	ATIS 123.0 115.9 335	AWIS 134.05	TWR 118.3	FIA (AH) ML CEN 119.8	CTAF + AFRU (AH) 118.3
MUDMO ONE RNAV (RNP) DEPARTURE RNP 0.30 (MUDMO1.MUDMO) RWY 12		Minimum climb gradient (All Engines) 5.4% to 2800FT.				

TAKE-OFF:

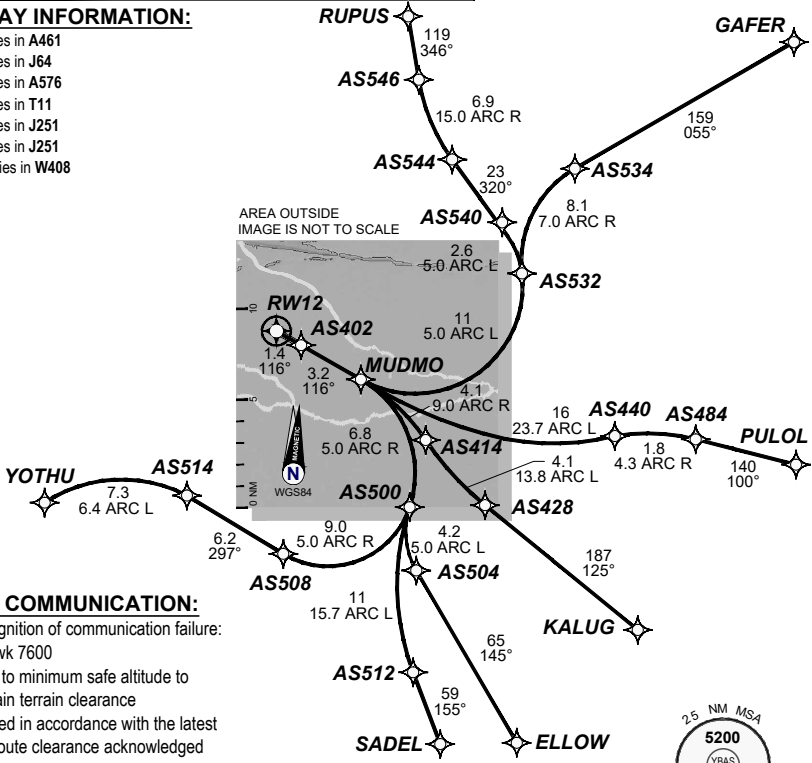
RWY 12: Fly the RNAV (RNP) track to **MUDMO**. Thence:

TRANSITIONS:

- (MUDMO1.ELLOW):** Fly the RNAV (RNP) track to **ELLOW**.
- (MUDMO1.GAFER):** Fly the RNAV (RNP) track to **GAFER**.
- (MUDMO1.KALUG):** Fly the RNAV (RNP) track to **KALUG**.
- (MUDMO1.PULOL):** Fly the RNAV (RNP) track to **PULOL**.
- (MUDMO1.SADEL):** Fly the RNAV (RNP) track to **SADEL**.
- (MUDMO1.RUPUS):** Fly the RNAV (RNP) track to **RUPUS**.
- (MUDMO1.YOTHU):** Fly the RNAV (RNP) track to **YOTHU**.

AIRWAY INFORMATION:

- AS504 lies in A461
- AS534 lies in J64
- AS428 lies in A576
- AS484 lies in T11
- AS512 lies in J251
- AS546 lies in J251
- YOTHU lies in W408



LOST COMMUNICATION:

- On recognition of communication failure:
- Squawk 7600
 - Climb to minimum safe altitude to maintain terrain clearance
 - Proceed in accordance with the latest ATC route clearance acknowledged

202310241855COPYRIGHT 2023 GE, USA, GE PROPRIETARY INFORMATION

10 NM MSA 4300

Changes: from SUP H81/23

BASDP04-178

DO NOT USE FOR NAVIGATION

Prepared by GE Aviation

