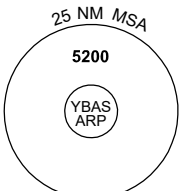


STANDARD INSTRUMENT DEPARTURES (SID)  
RWY 12/30 WEST (RNAV)  
**ALICE SPRINGS, NT (YBAS)**

30 NOV 2023

ATIS 123.0 115.9 335	AWIS 134.05	TWR 118.3	FIA (AH) ML CEN 119.8	CTAF+AFRU (AH) 118.3	Bearings are Magnetic Elevations in FEET AMSL
-------------------------	----------------	--------------	--------------------------	-------------------------	--

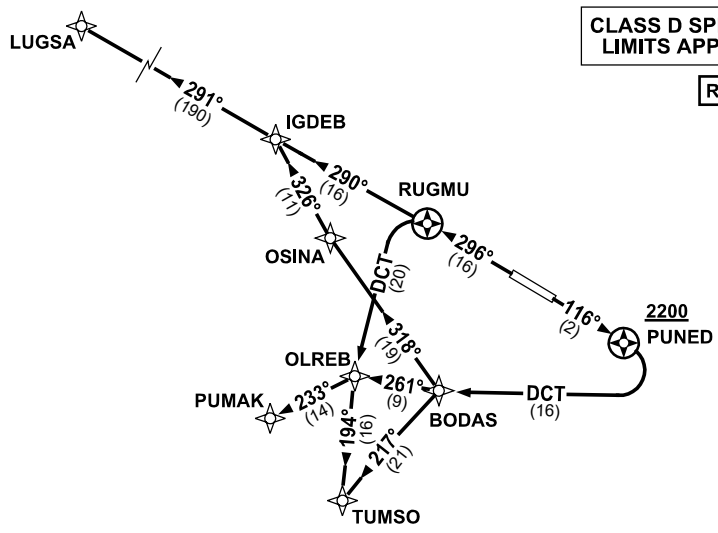
NOT TO SCALE



10 NM MSA 4300

**CLASS D SPEED LIMITS APPLY**

**RNP 1**



**TUMSO ONE DEPARTURE**  
**PUMAK ONE DEPARTURE**  
**LUGSA ONE DEPARTURE**

**RWY 30**

- GRAD 3.9% TO 3300ft thence 3.3%
- Track 296° to RUGMU
- FROM RUGMU**
- For LUGSA
- Track 290° to IGDEB
- Track 291° to LUGSA, thence as cleared
- For PUMAK
- Turn LEFT, track DCT to OLREB
- Turn RIGHT, track 233° to PUMAK, thence as cleared
- For TUMSO
- Turn LEFT, track DCT to OLREB,
- Track 194° to TUMSO, thence as cleared

**RWY 12**

- GRAD 3.3%
- Track 116° to PUNED
- Cross PUNED AT or ABV 2200FT**
- Turn RIGHT, track DCT to BODAS
- FROM BODAS**
- For TUMSO
- Turn LEFT, track 217° to TUMSO thence as cleared
- For PUMAK
- Track 261° to OLREB
- Turn LEFT, track 233° to PUMAK, thence as cleared
- For LUGSA
- Turn RIGHT, track 318° to OSINA
- Turn RIGHT, track 326° to IGDEB,
- Turn LEFT, track 291° to LUGSA, thence as cleared

Changes: LUGSA REPLACES LEESA, Editorial.

