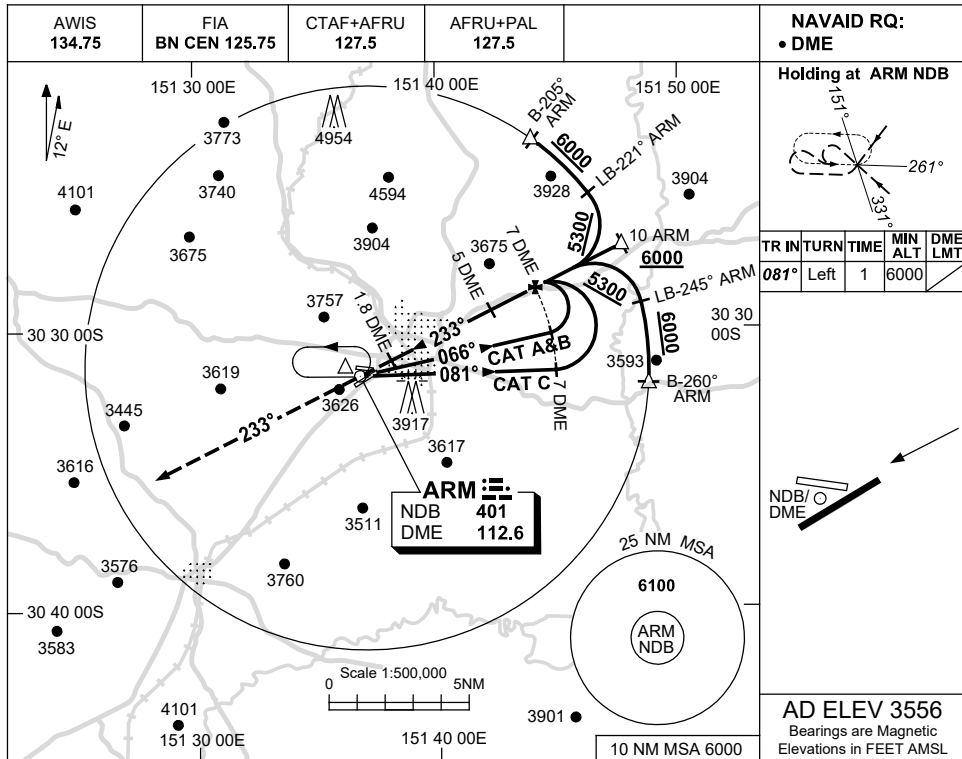


USE QNH

NDB RWY 23  
**ARMIDALE, NSW (YARM)**

17 JUN 2021



**NAVAID RQ:**  
 • DME

**Holding at ARM NDB**

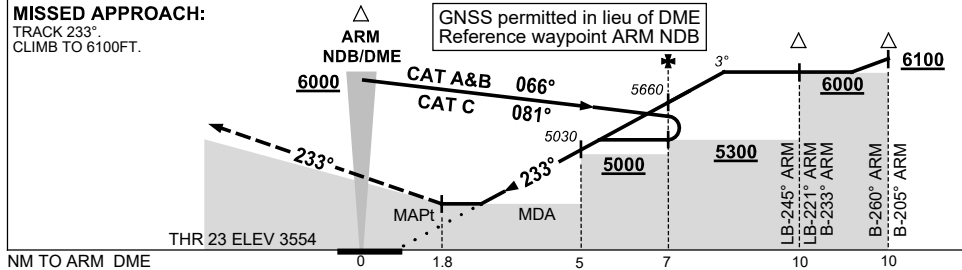
TR	IN	TURN	TIME	MIN ALT	DME LMT
081°	Left	1	6000		

Scale 1:500,000 5NM

NDB/DME

**AD ELEV 3556**  
 Bearings are Magnetic  
 Elevations in FEET AMSL

DIST TO ARM DME	2.1	3	4	5	5.8	6	7	8						
ALT (3° APCH PATH)	4100	4400	4720	5030	5300	5350	5660	6000						



**NOTES**

CATEGORY	A	B	C	D
S-I NDB/DME	4100 (544-3.1)			NOT APPLICABLE
CIRCLING	4340 (784-2.4)	4440 (884-4.0)		
ALTERNATE	(1284-4.4)		(1384-6.0)	

1. MAX IAS:  
 INITIAL : 210KT.

Changes: COORD FMT, Editorial.

ARMNB02-167