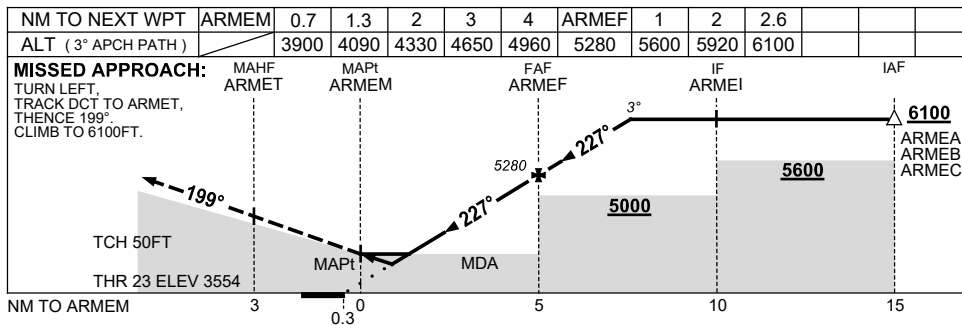
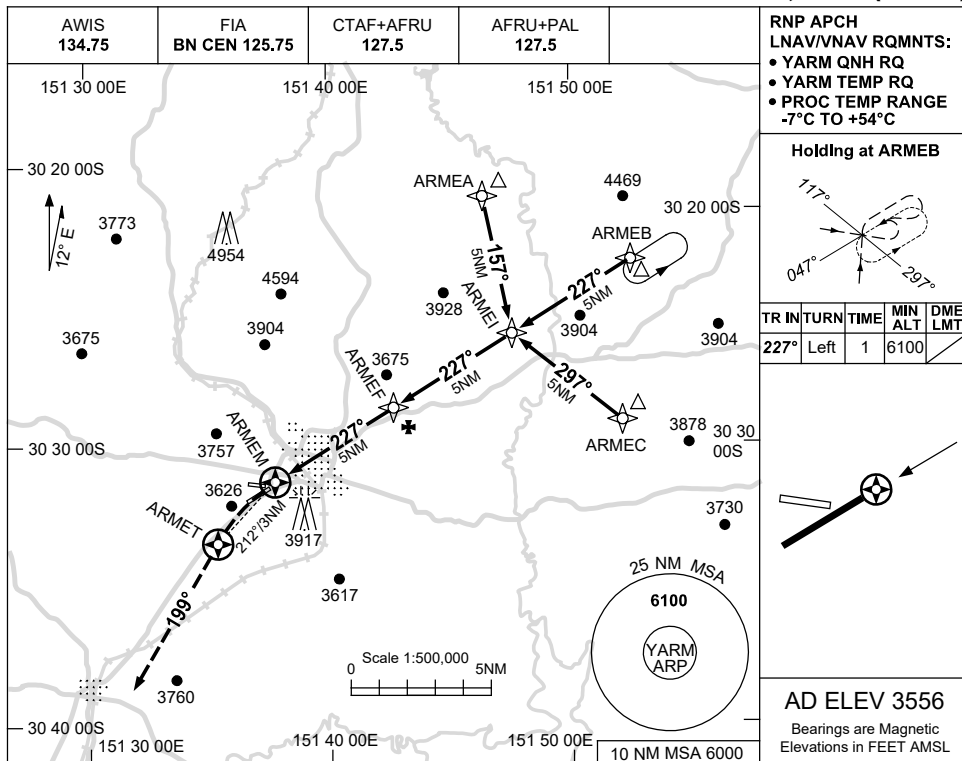


USE QNH

RNP RWY 23

24 MAR 2022

ARMIDALE, NSW (YARM)



**NOTES**

- MAX IAS: INITIAL : 210KT.

| CATEGORY  | A              | B | C              | D              |  |
|-----------|----------------|---|----------------|----------------|--|
| LNAV/VNAV | 3900 (346-1.9) |   |                | NOT APPLICABLE |  |
| LNAV      | 4090 (534-3.0) |   |                |                |  |
| CIRCLING  | 4340 (784-2.4) |   | 4440 (884-4.0) |                |  |
| ALTERNATE | (1284-4.4)     |   | (1384-6.0)     |                |  |

Changes: ARMEB WPT IDENT CORRECTION IN PROFILE VIEW.

ARMGN01-170