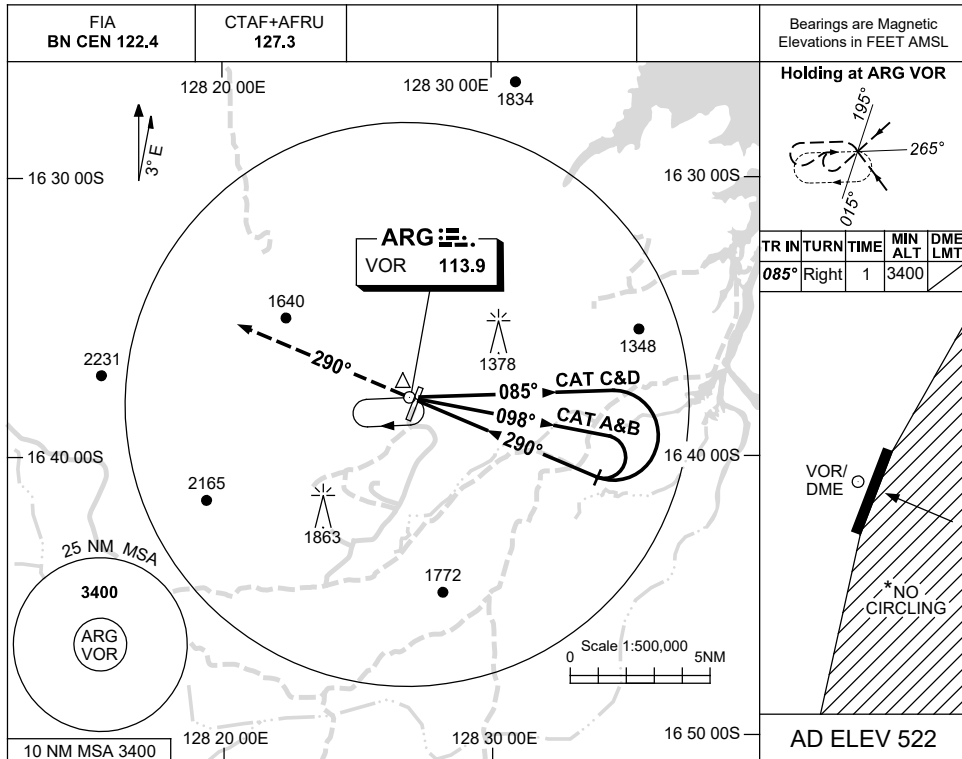


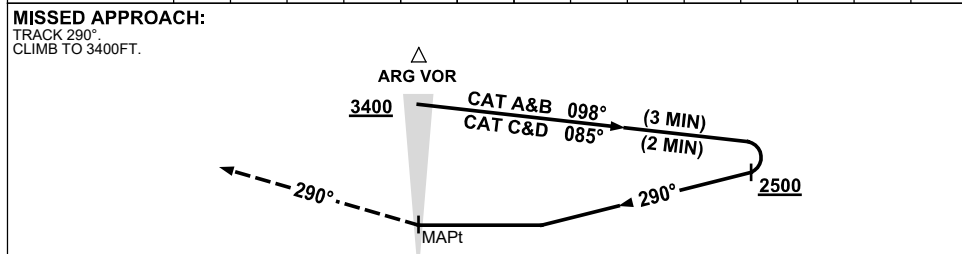
USE QNH

VOR-A  
**ARGYLE, WA (YARG)**

15 AUG 2019



DME DIST	NOT APPLICABLE							
ALT								



**NOTES**

CATEGORY	A	B	C	D
CIRCLING*	<b>1340</b> (818-2.4)	<b>1990</b> (1468-4.0)	<b>2360</b> (1838-5.0)	
ALTERNATE	(1318-4.4)	(1968-6.0)	(2338-7.0)	

1. MAX IAS:  
INITIAL : 210KT.
- \* 2. NO CIRCLING EAST  
OF RWY 01/19.
3. AWIS (PHONE)  
08 6216 2601

Changes: NOTE 3, COORD FORMAT, Editorial.

ARGVO02-160