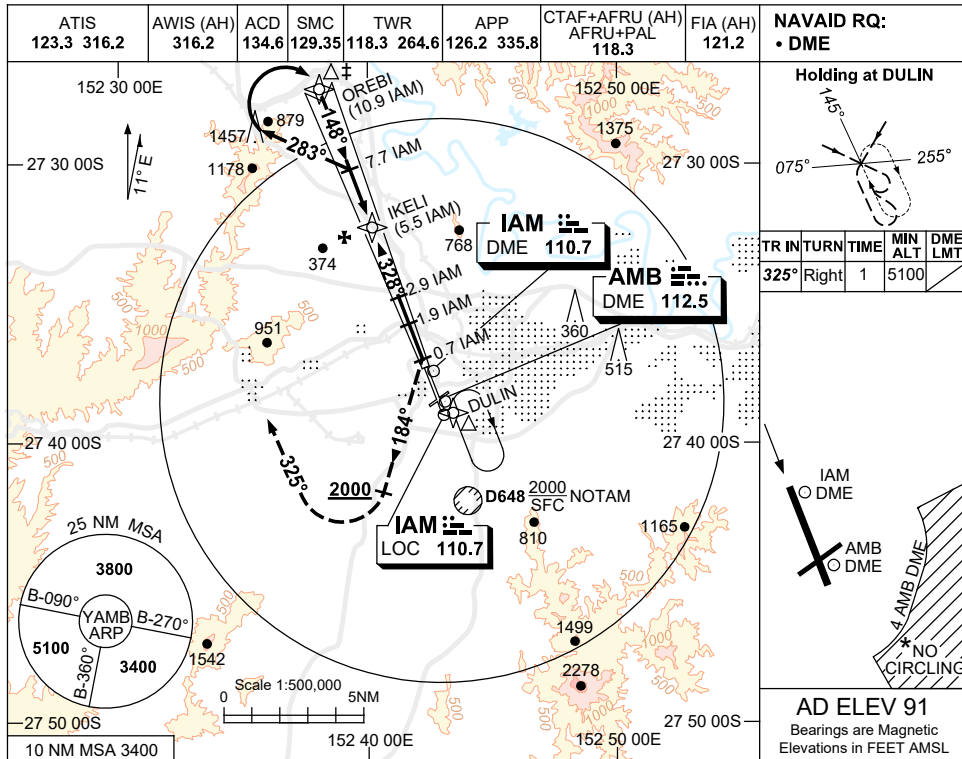


USE QNH

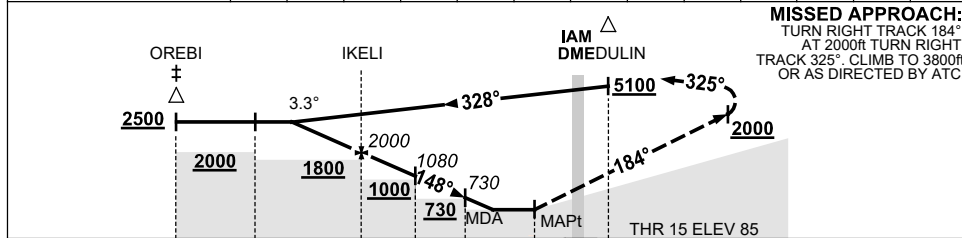
LOC-Z RWY 15

13 JUN 2024

AMBERLEY, QLD (YAMB)



NM TO IAM DME	6.9	6	5.5	5	4	2.9	1.9	1.7				
ALT (3.3° APCH PATH)	2500	2170	2000	1820	1470	1080	730	660				



NM TO IAM DME	10.9	7.7	5.5	2.9	1.9	0.7	0.2	1.6	
NM TO THR 15	10.7	7.5	5.3	2.7	1.7	0.5	0		

- NOTES**
- ACFT MAY BE RADAR VECTORED TO 10.9 IAM DME IAF.
  - APCH PATH ANGLE DOES NOT COINCIDE WITH PAPI ON GLIDE SLOPE INDICATION.
  - NO CIRCLING SE OF RWY 15/33 AND RWY 04/22 BEYOND 4 AMB DME.
  - COLOUR : SEE SPEC NOTICES.

CATEGORY	A	B	C	D
S-I LOC/DME	<b>660 (569-2.0)</b>			
CIRCLING *	<b>860 (769-2.4)</b>		<b>1090 (999-4.0) 1550(1459-5.0)</b>	
ALTERNATE	(1269-4.4)		(1499-6.0) (1959-7.0)	

Changes: S-I LOC/DME MINIMA, DIST/ALT TABLE, Editorial.

AMBLZ01-179