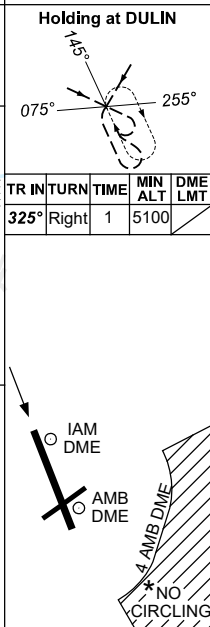
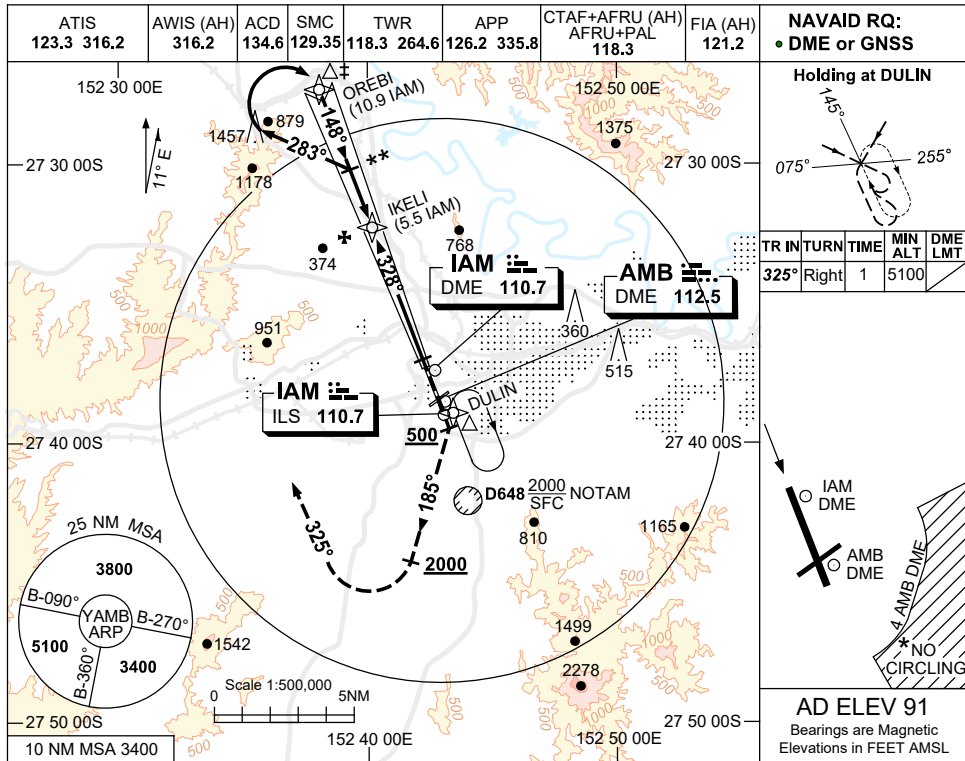


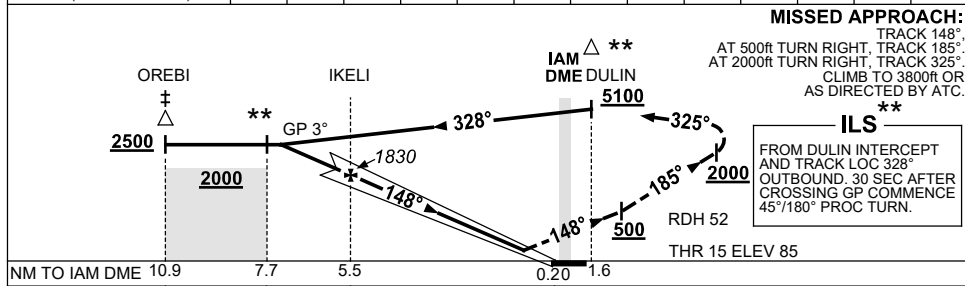
USE QNH

ILS-Z RWY 15  
**AMBERLEY, QLD (YAMB)**

21 MAR 2024



NM TO IAM DME	7.6	7	6	5.5	5	4	3	2	1				
ALT (3° APCH PATH)	2500	2300	1990	1830	1670	1350	1030	710	390				



NM TO IAM DME	10.9	7.7	5.5	0.20	1.6
NM TO THR 15	10.7	7.5	5.3	0	

- NOTES**
- ACFT MAY BE RADAR VECTORED TO 10.9 IAM DME IAF.
  - NO CIRCLING SE OF RWY 15/33 AND RWY 04/22 BEYOND 4 AMB DME.
  - COLOUR : SEE SPEC NOTICES.

CATEGORY	A	B	C	D
S-I ILS		390 (305) 0.8		
CIRCLING*	860 (769-2.4)	1090 (999-4.0)	1550 (1459-5.0)	
ALTERNATE	(1269-4.4)	(1499-6.0)	(1959-7.0)	

Changes: DME FREQ, VIS, OM/MM REMOVED, FAF WPT, DME REFERENCE, Editorial. AMBII01-178