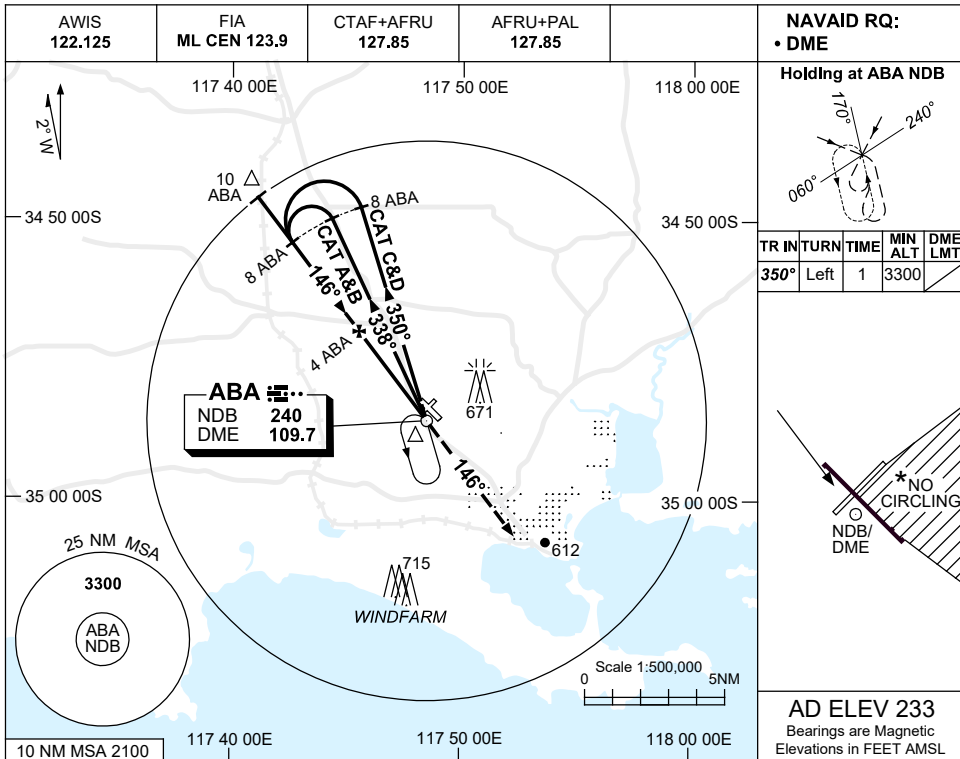


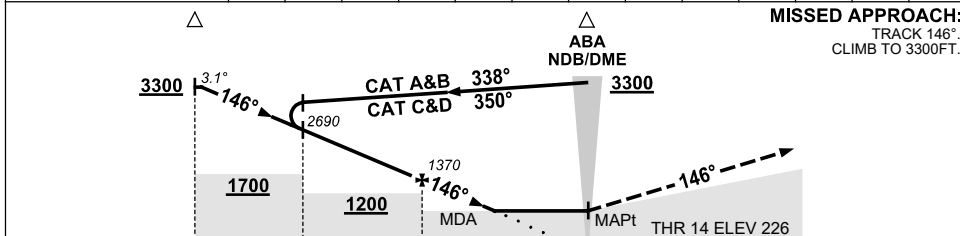
USE QNH

NDB-Y RWY 14  
**ALBANY, WA (YABA)**

7 NOV 2019



DIST TO ABA DME	9.8	9	8	7	6	5	4	3	2.4				
ALT (3.1° APCH PATH)	3300	3020	2690	2360	2030	1700	1370	1040	850				



NM TO ABA DME: 10, 8, 4, 0

**NOTES**

1. MAX IAS:  
INITIAL : 210KT.
- \* 2. NO CIRCLING IN SECTOR EAST OF RWY 14/32 & SOUTH OF RWY 05/23.
3. APCH PATH ANGLE DOES NOT COINCIDE WITH PAPI ON GLIDE SLOPE INDICATION.
4. COLOUR: SEE SPEC NOTICES.

CATEGORY	A	B	C	D
S-I NDB/DME	<b>850 (617-3.5)</b>			
CIRCLING *	<b>1120 (887-2.4)</b>	<b>1170 (937-4.0)</b>	<b>1290 (1057-5.0)</b>	
ALTERNATE	(1387-4.4)	(1437-6.0)	(1557-7.0)	

Changes: D136 & 500FT CONTOUR REMOVED.

ABANB01-161