

**AIP SUPPLEMENT
(SUP)****AIRAC****H72/26****Effective: 202607081600 UTC**AERONAUTICAL INFORMATION SERVICE,
AIRSERVICES AUSTRALIA, GPO BOX 367,
CANBERRA ACT 2601For **DISTRIBUTION** queries, contact:
Email: aim_editorial@airservicesaustralia.comFor **CONTENT** queries regarding this SUP, contact:
Email: ifp@airservicesaustralia.com**LATROBE VALLEY (YLTV) AERODROME
AMENDED APPROACH PROCEDURE****1. INTRODUCTION**

- 1.1 This SUP cancels and replaces SUP H60/26 with a change to latitudes published in para 2.1.
- 1.2 Due to the Delburn Wind-Farm project, RNP RWY 03 at Latrobe Valley (YLTV) Aerodrome requires amendments.
- 1.3 The amended procedure implements a Final Approach Fix (FAF) position change. The FAF is now 5.6NM from the RWY 03 threshold.
- 1.4 Due to updated waypoint location of RNP RWY 03 FAF, all RNP approach WPT names have been updated from TV2 to TV3.

2. WAYPOINTS

- 2.1 New waypoints required for amended procedure.

DELETED	NEW	LAT/LONG
TV2WA	TV3WA	382501.09S 1462017.16E
TV2WB	TV3WB	382342.57S 1461408.78E
TV2WC	TV3WC	381803.10S 1461254.28E
TV2WF	TV3WF	381654.62S 1462249.74E
TV2WH	TV3WH	381100.20S 1463021.45E
TV2WI	TV3WI	382010.83S 1461839.28E

- 2.2 Recommended coding is available on request.

3. CANCELLATION

- 3.1 This SUP will be cancelled when it is incorporated into AIP DAP, expected to be in DAP Amendment 188, effective 03 SEP 2026.

4. DISTRIBUTION

- 4.1 Airservices Australia website only.

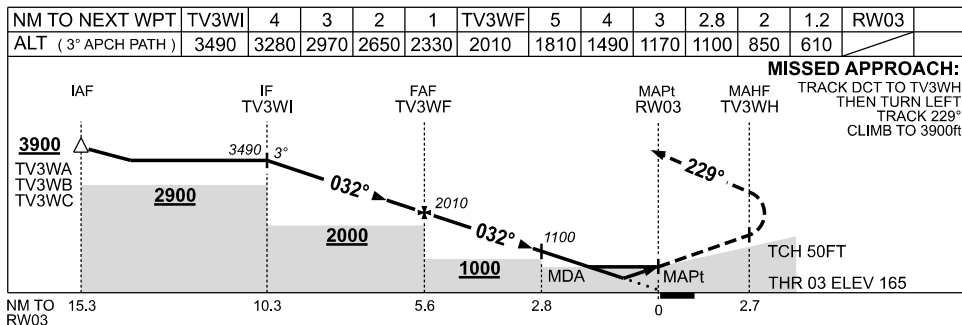
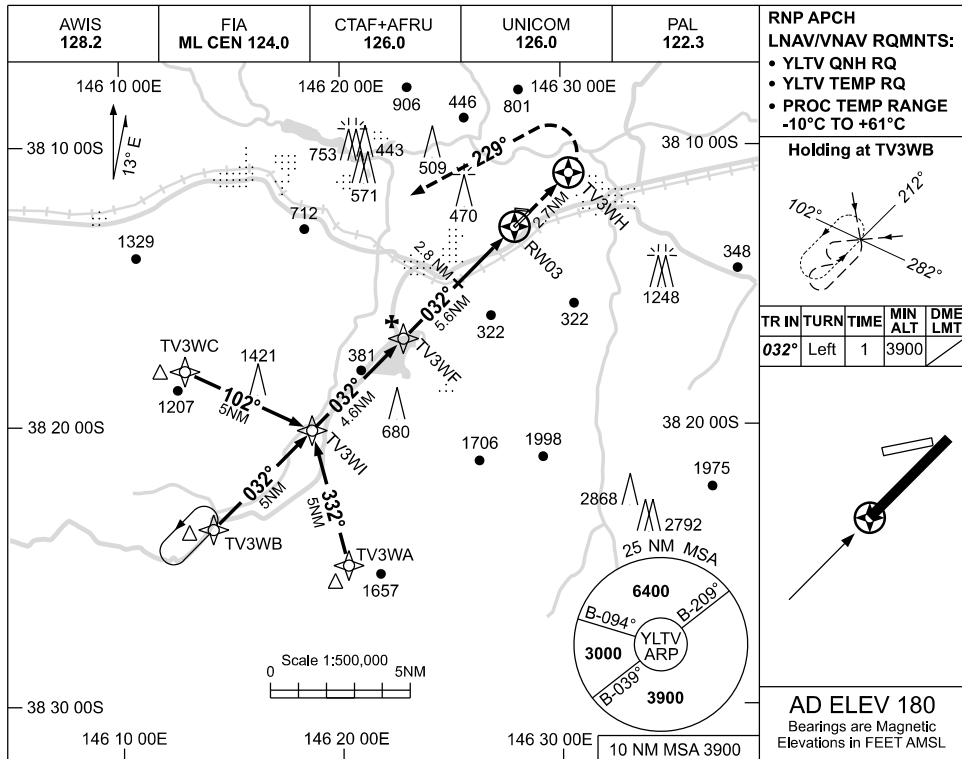
Appendix

1. RNP RWY 03

**APPENDIX 01
TO SUP H72/26**

USE QNH

**RNP RWY 03
LATROBE VALLEY, VIC (YLTV)**



NOTES

CATEGORY	A	B	C	D
LNAV/VNAV	610 (445-2.5)			NOT APPLICABLE
LNAV	850 (685-3.9)			
CIRCLING	980 (800-2.4)		1470 (1290-4.0)	
ALTERNATE	(1300-4.4)		(1790-6.0)	

1. MAX IAS:
INITIAL : 210KT.

Changes: FAF LOCATION, DIST ALT TABLE, WPT NAMES.

LTVGN01-SUP