

**AIP SUPPLEMENT
(SUP)****H70/26****Effective: 202605130000 UTC**

AERONAUTICAL INFORMATION SERVICE,
AIRSERVICES AUSTRALIA, GPO BOX 367,
CANBERRA ACT 2601

For **DISTRIBUTION** queries, contact:
Email: aim_editorial@airservicesaustralia.com

For **CONTENT** queries regarding this SUP, contact:
Email: vratnayake@tsairport.com.au

TOWNSVILLE/TOWNSVILLE INTL AERODROME (YBTL) RWY 01/19 EXTENSION, STAGES 1A, 2 AND 4A OPERATIONAL RESTRICTIONS

1. INTRODUCTION

- 1.1 This SUP cancels and replaces SUP H58/26 with amended declared distances and gradient changes for RWY 01/19 during stages 1A, 2 and 4A.
- 1.2 This SUP provides operational information for users of Townsville Airport (YBTL) during Stage 1A, Stage 2 and Stage 4A of the P0012 - RWY 01/19 Extension, Pavement Overlay and AGL Upgrade Project.
- 1.3 Stage 1A includes the closure of TWY W, TWY A7, TWY G1 and TWY G2 with a temporary displaced threshold for RWY 19 to allow for bulk earthworks and installation of new AGL infrastructure. Commencement of stage 1A will be notified by NOTAM.
- 1.4 Stage 2 includes the closure of TWY Z, TWY W, and TWY A7 with a temporary displaced threshold for RWY 19 to allow for demolition of pavement, removal and relocation of RWY 19 IWI, bulk earthworks, and pavement construction. Commencement of stage 2 will be notified by NOTAM.
- 1.5 Stage 4A includes the closure of TWY W, TWY A4, A5, A6 and A7, TWY G1, TWY E1, TWY C, and TWY F with a temporary displaced threshold for RWY 19 to allow for placement of new asphalt pavement and new line marking, bulk earthworks, and installation of new AGL infrastructure. Commencement of stage 4A will be notified by NOTAM.

- 1.6 It is essential that pilots ensure they understand displaced threshold markings and the associated requirements of displaced threshold operations. Pilots are reminded to check YBTL NOTAM during works to ensure they are using the correct RWY distances.

2. REFERENCES

- 2.1 Method of Working Plan – MOWP 02/2026 Version 1.2

www.townsvilleairport.com.au/corporate-partnerships/operations-regulations/flight-operations/Method-of-Working-Plan

- 2.2 Refer to the AIP SUP on www.airservicesaustralia.com/aip/aip.asp

- Townsville/Townsville INTL Aerodrome (YBTL) DAP for Temporary Displaced Threshold RWY 19 - Stage 2
- Townsville/Townsville INTL Aerodrome (YBTL) New RNP-AR Procedure

- 2.3 The most current operational information will be promulgated via NOTAM.

3. STAGE 1A

- 3.1 Stage 1A will be in operation 2200 to 0600 Local (1200 to 2000 UTC), concurrent with Stage 4A and Stage 2, commenced 09 May to late May/early June 2026.

- 3.2 Stage 1A works include earthworks (fill placement) within the extended RWY 19 area and installation of new AGL assets to facilitate the upgrade to lighting.

- 3.3 RWY 01/19 Details:

- RWY 19 threshold displaced 1,038M
- RWY 01/19 978M northern end closed.

| | TORA | TODA | ASDA | LDA |
|--------|-------------|-------------------|-------------|-------------|
| RWY 01 | 1400 (4593) | 1460 (4790) (4.0) | 1400 (4593) | 1400 (4593) |
| RWY 19 | 1400 (4593) | 1602 (5256) | 1400 (4593) | 1400 (4593) |

- 3.4 Taxiway Details:

- TWY W, A7, G1, and G2 closed.

4. STAGE 2

- 4.1 This stage will be in operation H24 or 0600 to 2200 Local (2000 to 1200 UTC) when concurrent with Stage 1A and 4A, which has commenced 27 February through to 18 December 2026.
- 4.2 Stage 2 works include demolition of RWY 19 and TWY A7 pavement, removal and relocation of RWY 19 IWI, bulk earthworks and pavement construction for RWY 19 extension.
- 4.3 RWY 01/19 Details:
- RWY 19 threshold displaced 478M
 - RWY 01/19 418M northern end closed.

| | TORA | TODA | ASDA | LDA |
|---------------|-------------|--------------------|-------------|-------------|
| RWY 01 | 1960 (6430) | 2020 (6627) (2.0) | 1960 (6430) | 1960 (6430) |
| RWY 19 | 2020 (6627) | 2222 (7290) (2.65) | 2020 (6627) | 1960 (6431) |

| Supplementary Takeoff Distances | | | | |
|--|------------------|------------------|-----------------|---------------------|
| RWY 01 | 1960 (6428)(1.6) | 2007 (6583)(1.9) | | |
| RWY 19 | 1493(4898)(1.6) | 2074(6804)(1.9) | 2154(7067)(2.2) | 2203(7228) (2.5) |

- 4.4 Taxiway Details:
- TWY Z, W, and A7 closed.

5. STAGE 4A

- 5.1 Stage 4A will be in operation 2200 to 0600 Local (1200 to 2000 UTC), concurrent with Stage 1A and Stage 2, commenced 09 May to late May/early June 2026.
- 5.2 Stage 4A works include placement of new asphalt pavement and new line marking on RWY 01/19, TWY E1, TWY E2 and between TWY A7 to A4, earthworks (fill placement) within the extended RWY 19 area, and installation of new AGL assets to facilitate the upgrade to lighting.

5.3 RWY 01/19 details:

- RWY 19 threshold displaced 478M
- RWY 01/19 418M northern end closed

| | TORA | TODA | ASDA | LDA |
|---------------|-------------|--------------------|-------------|-------------|
| RWY 01 | 1960 (6430) | 2020 (6627) (2.0) | 1960 (6430) | 1960 (6430) |
| RWY 19 | 2020 (6627) | 2222 (7290) (2.65) | 2020 (6627) | 1960 (6430) |

5.4 Taxiway details:

- TWY W, A4, A5, A6, A7, G1, E1, C, and F CLOSED.

6. CONTACT

6.1 For further information contact:

aviation@tsvairport.com.au

7. CANCELLATION

7.1 This SUP cancels when Stage 1A and 4A are complete, expected May/June 2026.

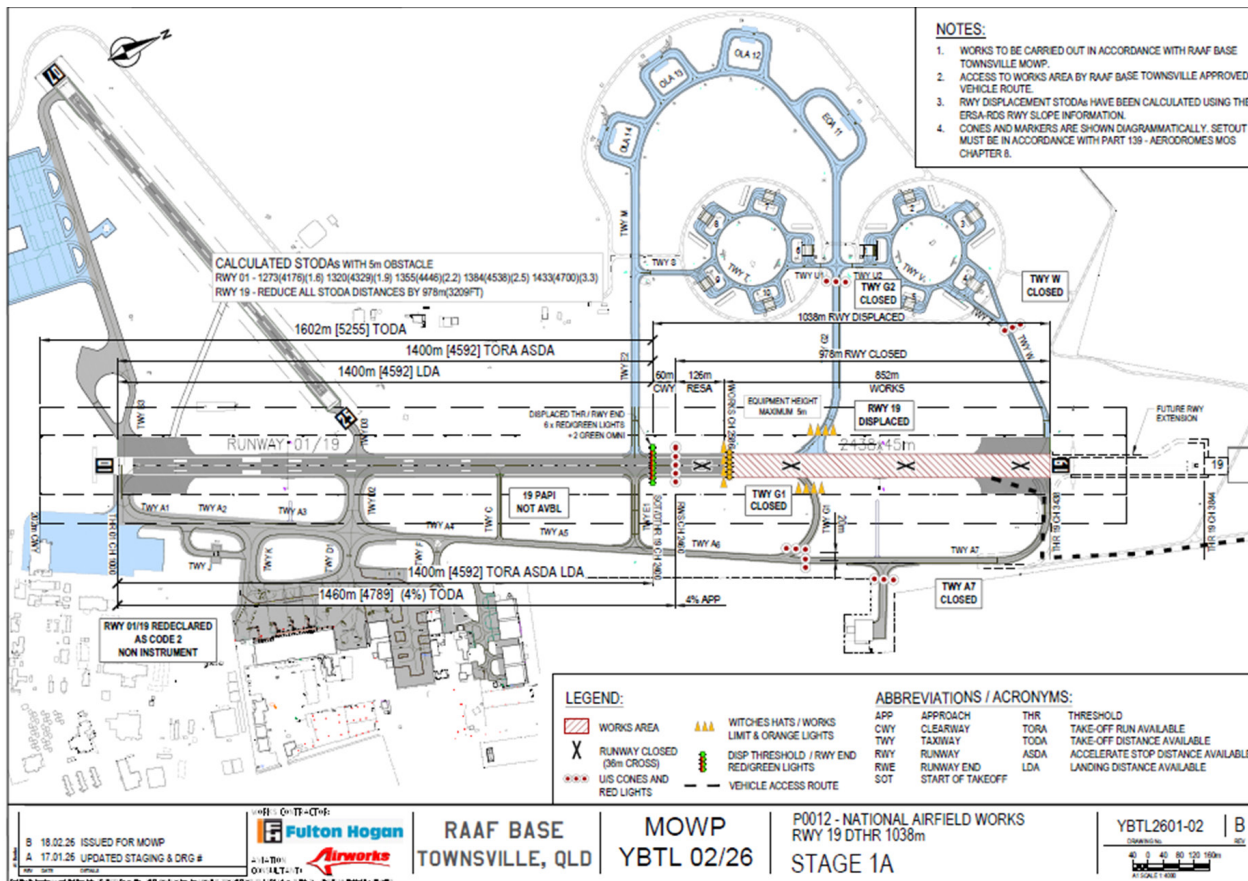
8. DISTRIBUTION

8.1 Airservices Australia website only.

Appendices

1. Stage 1A Works
2. Stage 2 Works
3. Stage 4A Works

1. Stage 1A Works



2. Stage 2 Works

