

**AIP SUPPLEMENT
(SUP)****H68/26****Effective: 202605251400 UTC**AERONAUTICAL INFORMATION SERVICE,
AIRSERVICES AUSTRALIA, GPO BOX 367,
CANBERRA ACT 2601For **DISTRIBUTION** queries, contact:
Email: aim_editorial@airservicesaustralia.comFor **CONTENT** queries regarding this SUP, contact:
Email: adf.airspace@defence.gov.au Phone: 02 6128 4858**MILITARY EXERCISES ACES BRAVO AND
DIAMOND STORM, NORTHERN TERRITORY,
26 MAY – 25 JUNE 2026****1. INTRODUCTION**

- 1.1 This AIP SUP cancels and replaces SUP H59/26, with changes to the table in para 2.2.1, paras 2.2.3, 2.2.4, 2.5.1 and 3.1.
- 1.2 Elements of Australian and International Military Forces will be conducting Exercises 'ACES BRAVO 2026' (AB26) and 'DIAMOND STORM 2026' (DSM26) over the period 26 May – 25 June 2026.
- 1.3 Increased military aviation operations at RAAF Darwin may cause delays. Aircraft captains, including non-exercise military aircraft, should familiarise themselves with Section 4 of this document.
- 1.4 This AIP SUP describes the airspace, timings, diversion routes and procedures associated with this activity.

2. AIRSPACE

- 2.1 Airspace users should refer to Darwin Airspace (DSX), Tindal Airspace (TNX), Bradshaw Airspace (TDX) and Brisbane FIR (YBBB) NOTAMs to confirm vertical limits and activation timings, for permanent airspace and temporary special use airspace (SUA).

2.2 AB26 and DSM26 AIRSPACE

- 2.2.1 AB26 and DSM26 use the same airspace configuration comprised of the following permanent and temporary SUA (image contained in Appendix 1):

AB26 and DSM26 Airspace (26 May – 25 June)		
IDENT	VERTICAL LIMITS	AUTHORITY / CONTACT
Tindal CTR	SFC – 2500	FLTCDR 452SQN TINDAL
R225ABCDEF	9500 – FL600	FLTCDR 452SQN TINDAL
R232	SFC – NOTAM	FLTCDR 452SQN TINDAL
R238	3500 – NOTAM	FLTCDR 452SQN TINDAL
R241	8500 – NOTAM	FLTCDR 452SQN TINDAL
R244	4000 – 9500	FLTCDR 452SQN TINDAL
R245	9500 – NOTAM	FLTCDR 452SQN TINDAL
R247	4000 – 9500	FLTCDR 452SQN TINDAL
R248	4000 – 9500	FLTCDR 452SQN TINDAL
R249A	1500 – 2500	FLTCDR 452SQN TINDAL
R249B	2500 – NOTAM	FLTCDR 452SQN TINDAL
R250	SFC – 9500	FLTCDR 452SQN TINDAL
R251	9500 – NOTAM	FLTCDR 452SQN TINDAL
R252AB	9500 – NOTAM	FLTCDR 452SQN TINDAL
R253	8500 – NOTAM	FLTCDR 452SQN TINDAL
R262A Partial	8500 – NOTAM	FLTCDR 452SQN DARWIN
R262BC	8500 – NOTAM	FLTCDR 452SQN DARWIN
R268	SFC – NOTAM	Army RCO BFTA
R269	SFC – NOTAM	Army RCO BFTA
R270	SFC – NOTAM	Army RCO BFTA
TRA 'DOWNPOUR' (see para 2.2.3)	10000 – FL600	FLTCDR 452SQN TINDAL
M263EFG Partial	FL200 – FL600	FLTCDR 452SQN DARWIN
D210	SFC – BCTA	FLTCDR 452SQN TINDAL
D223	SFC – 8500	FLTCDR 452SQN TINDAL
D229	SFC – 8500	FLTCDR 452SQN TINDAL
D236AB	SFC – 3000	Army RCO BFTA
TDA 'BLUSTER' (see para 2.2.4)	SFC – 10000	FLTCDR 452SQN TINDAL

2.2.2 The following partial airspaces are established for AB26 and DSM26 airspace:

YBBB/R262A PARTIAL

CONDITIONAL STATUS: RA2

MILITARY FLYING/NON-FLYING

LATERAL LIMITS: 125549S 1302738E then along the counter clockwise arc of a circle radius 40.00NM centre 122524S 1305423E (DN/DME) - 130327S 1304117E - 134106S 1302655E then along the clockwise arc of a circle radius 80.00NM centre 122524S 1305423E (DN/DME) - 132616S 1300054E - 125549S 1302738E

VERTICAL LIMITS: 8500 – NOTAM

HOURS OF ACTIVITY: NOTAM

CONTROLLING AUTHORITY: FLTCDR 452SQN DARWIN

YBBB/M263EFG PARTIAL

MILITARY FLYING/NON FLYING

LATERAL LIMITS: 124436S 1301824E then along the counter clockwise arc of a circle radius 40.00NM centre 122524S 1305423E (DN/DME) - 125551S 1302741E - 143432S 1290013E then along the clockwise arc of a circle radius 170.00NM centre 122524S 1305423E (DN/DME) - 134618S 1282100E - 124436S 1301824E

VERTICAL LIMITS: FL200 – FL600

HOURS OF ACTIVITY: NOTAM

ADMINISTERING AUTHORITY: FLTCDR 452SQN DARWIN

2.2.3 The following Temporary Restricted Area (TRA) is established for AB26 and DSM26 airspace and will be in use between 26 May and 24 June 2026:

YBBB/TRA 'DOWNPOUR'

CONDITIONAL STATUS: RA2

MILITARY FLYING

LATERAL LIMITS: 161640S 1285943E – 164430S 1291048E –
180000S 1313548E – 180000S 1325147E – 200000S 1325147E –
200000S 1295200E – 191500S 1285943E – 161640S 1285943E

VERTICAL LIMITS: 10000 – FL600

HOURS OF ACTIVITY: NOTAM

CONTROLLING AUTHORITY: FLTCDR 452SQN TINDAL

2.2.4 The following Temporary Danger Area (TDA) is established for AB26 and DSM26 airspace and will be in use between 26 May and 24 June 2026:

YBBB/TDA 'BLUSTER'

MILITARY FLYING

LATERAL LIMITS: 161640S 1285943E – 164430S 1291048E –
180000S 1313548E – 180000S 1325147E – 200000S 1325147E –
200000S 1295200E – 191500S 1285943E – 161640S 1285943E

VERTICAL LIMITS: SFC – 10000

HOURS OF ACTIVITY: NOTAM

CONTACT: FLTCDR 452SQN TINDAL

2.3 Exercise Airspace Activation Timings

2.3.1 Exercise airspace activation periods are expected to be in accordance with the following table:

AB26 and DSM26 Airspace Activation Timings		
DATE	TIME (LOCAL I/K)	TIME (UTC)
TUE – FRI 26 – 29 MAY	0900 - 1230	2330 - 0300
	1500 - 1830	0530 - 0900
MON – WED 01 – 03 JUN	0900 - 1230	2330 - 0300
	1500 - 1830	0530 - 0900
FRI 05 JUN	0900 - 1230	2330 - 0300
TUE – THU 09 – 11 JUN	0900 - 1230	2330 - 0300
	1500 - 1830	0530 - 0900
FRI 12 JUN	0900 - 1230	2330 - 0300
MON – THU 15 – 18 JUN	1300 - 1630	0330 - 0700
	1900 - 2300	0930 - 1330
FRI 19 JUN	0930 - 1230	0000 - 0300
	1300 - 1630	0330 - 0700
MON – TUE 22 – 23 JUN	0900 - 1230	2330 - 0300
	1500 - 1830	0530 - 0900
WED 24 JUN	0900 - 1230	2330 - 0300
THU 25 JUN	0900 - 1230	2330 - 0300
	1430 - 1800	0500 - 0830

2.4 Non-activity airspace activation

2.4.1 DSX, TDX and TNX permanent airspace will be activated for non-exercise activities in accordance with normal NOTAM requirements.

2.5 Restrictions on Military SUA

2.5.1 The following military SUA have restrictions during the conduct of AB26 and DSM26:

IDENT	GROUP	RESTRICTION
R224AB MT BUNDEY	NIL	Not AVBL above FL125 during AB26/DSM26 airspace activation timings.
R226AB	TNX	Not AVBL during AB26/DSM26 airspace activation timings.
R228AB MT BUNDEY	NIL	Not AVBL during AB26/DSM26 airspace activation timings.

2.6 NOTAM

2.6.1 Airspace users should refer to both local area (DSX, TDX and TNX) and Brisbane FIR (YBBB) NOTAM to confirm vertical limits and activation timings for permanent and temporary SUA. Timings may be amended or deactivated by NOTAM at short notice.

2.7 Activation of TRA or TDA in support of AB26 or DSM26 will specifically refer to this SUP in NOTAM.

2.8 NOTAM will be issued at least 8 hours prior to activation.

2.9 General airspace enquiries prior to exercise start can be made to the Joint Airspace Control Cell on (02) 6128 4856 during normal business hours (AEST) or via email adf.airspace@defence.gov.au.

2.10 During execution, contact the Exercise Airspace Manager on (02) 6250 6671.

3. MILITARY AIRCRAFT OPERATIONS

3.1 During the conduct of AB26 and DSM26, concurrent Defence activities will be conducted in M263ABCDG. Refer to DSX NOTAM and Appendix 3.

3.2 Noise sensitive areas

3.2.1 Military aircraft will plan to avoid known sensitive areas and comply with Fly Neighbourly Advice.

4. DARWIN AERODROME (YPDN) PROCEDURES

- 4.1 Due to increased military activity in the Darwin area, increased congestion is expected at YPDN. All aircraft captains, including military exercise aircraft, should anticipate some delays, particularly during peak military exercise traffic periods.
- 4.2 Additionally, the possibility of arrestor cable engagements on RWY 11/29 is increased. Aircraft captains should be aware that RWY 11/29 may be unavailable for periods in excess of 30 minutes following an engagement. Aircraft captains should consider the possibility of the requirement for diversion to alternate airfields following a cable engagement.

4.3 Holding Fuel Requirements

- 4.3.1 During AB26 and DSM26 airspace activation periods, all arriving aircraft above 7,000KG MTOW require 30 minutes holding fuel in addition to normal requirements. Multiple military fast jet recoveries to Darwin can be expected to commence approximately one hour prior to cessation of airspace activation.
- 4.4 Aircraft with an MTOW 7,000KG or less that are planned to arrive during AB26 and DSM26 airspace activation periods can anticipate a requirement to carry 15 minutes of holding fuel in addition to normal requirements for traffic management.

4.5 Military Priority Windows

- 4.5.1 During AB26 and DSM26, the following windows will be used to manage military fast jet departure flow at Darwin. Some military fast jets may depart outside of these windows; however, priorities outside of these windows will be provided in accordance with AIP. To avoid delays, scheduled RPT operators are encouraged to review their airline off blocks times in accordance with the following table:

AB26 and DSM26 Darwin International Airport Military Priority Windows		
DATE	TIME (LOCAL I/K)	TIME (UTC)
TUE – FRI 26 – 29 MAY	0900 - 0930	2330 - 0000
	1500 - 1530	0530 - 0600
MON – WED 01 – 03 JUN	0900 - 0930	2330 - 0000
	1500 - 1530	0530 - 0600
FRI 05 JUN	0900 - 0930	2330 - 0000
TUE – THU 09 – 11 JUN	0900 - 0930	2330 - 0000
	1500 - 1530	0530 - 0600
FRI 12 JUN	0900 - 0930	2330 - 0000
MON – THU 15 – 18 JUN	1300 - 1330	0330 - 0400
	1900 - 1930	0930 - 1000
FRI 19 JUN	1300 - 1330	0330 - 0400
	0900 - 0930	2330 - 0000
MON – TUE 22 – 23 JUN	1500 - 1530	0530 - 0600
	0900 - 0930	2330 - 0000
WED 24 JUN	0900 - 1230	2330 - 0300

5. TINDAL AERODROME (YPTN) PROCEDURES

- 5.1 Due to the increased military activity in the Tindal area, increased congestion is expected at YPTN. All aircraft captains, including military exercise aircraft, should anticipate some delays, particularly during peak military exercise traffic periods.

6. ACCESS TO EXERCISE AIRSPACE

- 6.1 Access through active restricted areas described in this SUP, by non-exercise aircraft, is not available except for:
- a) Aircraft operating in the preservation of life or property (SAR, MED, POL, FFR), and
 - b) Aircraft with a declared emergency.

-
- 6.2 No Air Traffic Services (ATS) will be provided to civilian aircraft requiring emergency transit of the Diamond Storm Airspace. ATS only available within Darwin CTR, Darwin CTA, Tindal CTR and R249A/B (up to FL200). Within the temporary danger area, traffic information will not be provided to or about participant aircraft. Within the temporary restricted area, no ATS will be provided. If the airspace is released to Airservices Australia, then ATS will be provided to civil aircraft in accordance with MATS.
- 6.3 Any non-participant aircraft approved to transit exercise airspace will be segregated from exercise activities by a lateral minimum of 5NM or 1,000FT vertically.
- 6.4 Border Force transits must be pre-coordinated with the relevant authority.
- 6.5 Should priority transits IAW with para 6.1 be required, airways clearance must be obtained from the Controlling Authority prior to entry.

6.6 Victoria Highway Corridor

- 6.6.1 The Victoria Highway Corridor will be available during military exercise activation periods. Victoria Highway Corridor procedures are specified in ERSA under the Tindal Flight Procedures entry.

6.7 Aerial Mustering Operations

- 6.7.1 Requests for aerial mustering operations Tuesday to Friday must be emailed to tdl.airspacecell@defence.gov.au at least 48 hours prior to the planned activity. Requests for Mondays must be emailed prior to 0800 Local on the preceding Thursday. A Restricted Operating Zone (ROZ) will be established for notified aerial mustering operations which military aircraft will plan to avoid. Prepositioning of aerial mustering aircraft should be accomplished outside of AB26/DSM26 airspace activation windows.

7. DIVERSION ROUTES

7.1 The following Air Routes are affected by the restricted areas in this AIP SUP:

- A461
 - A464
 - G326
 - J30
 - J72
 - J151
 - J251
 - Q23
 - T74
 - W287
 - W614
 - W946
 - Y25
- a) Pilots are not to flight plan via diversion routes promulgated in ERSA GEN – FPR.
- b) Please direct all enquiries relating to diversion routes to: atm.director@airservicesaustralia.com
- c) Pilots operating at levels that would not remain vertically clear of restricted areas shall flight plan via the following diversion routes:

Affected Route	A461
Use diversion route	<p><u>YPDN Departures</u> RUPEG BEYNO MILIV TNK</p> <p><u>YPDN Arrivals</u> TNK MILIV BEYNO BEBEN ALLEE Q23 DN</p> <p><u>Overflying Aircraft - North</u> AS W177 TNK MILIV IGUVI MASRA</p>

Affected Route	A464
Use diversion route	<u>YPDN Departures</u> RUPEG MIGAX <u>YPDN Arrivals</u> MIGAX BEYNO BEBEN ALLEE Q23 DN <u>YPTN Departures</u> TN BEYNO MIGAX <u>YPTN Arrivals</u> MIGAX BEYNO TN <u>Overflying Aircraft - North</u> MIGAX IGUVI MASRA IKUMA
Affected Route	G326
Use diversion route	BIKER PULEB DOPUK A587 ONOXA
Affected Route	J30
Use diversion route	<u>YPDN Departures</u> RUPEG BEYNO MILIV TNK <u>YPDN Arrivals</u> TNK MILIV BEYNO BEBEN ALLEE Q23 DN <u>YPTN Departures</u> TN BEYNO MILIV TNK <u>YPTN Arrivals</u> TNK MILIV BEYNO TN <u>Overflying Aircraft - North</u> TNK MILIV IGUVI MASRA

Affected Route	J72 - ABOVE FL200
Use diversion route	All aircraft EXCEPT YPKU Departures DN GUSNU IKASO MILEM KU <u>YPKU Departures</u> KU EGUMI MILEM IKASO GUSNU DN
Affected Route	J151 – ABOVE FL200
Use diversion route	DN GUSNU IKASO MILEM
Affected Route	J251
Use diversion route	<u>YPDN Departures</u> RUSKA BEYNO MILIV TNK <u>YPDN Arrivals</u> AS W177 TNK MILIV BEYNO BEBEN ALLEE Q23 DN <u>YPTN Departures</u> TN BEYNO MILIV TNK <u>YPTN Arrivals</u> TNK MILIV BEYNO TN <u>Overflying Aircraft - North</u> AS W177 TNK MILIV IGUVI MASRA
Affected Route	Q23 – Above A095
Use diversion route	<u>YPTN Departures</u> TN BEYNO BEBEN ALLEE Q23 DN <u>Overflying Aircraft</u> BEYNO BEBEN ALLEE

Affected Route	T74
Use diversion route	<p><u>YPDN Departures</u> RUPEG BEYNO MILIV</p> <p><u>YPDN Arrivals</u> MILIV BEYNO BEBEN ALLEE Q23 DN</p> <p><u>YPTN Departures</u> TN BEYNO MILIV</p> <p><u>YPTN Arrivals</u> MILIV BEYNO TN</p> <p><u>Overflying Aircraft - North</u> MILIV IGUVI MASRA</p>
Affected Route	W287 – ABOVE A085
Use diversion route	<p><u>YPDN Departures</u> DN GUSNU IKASO MILEM</p> <p><u>YPDN Arrivals</u> MILEM IKASO GUSNU DN</p>
Affected Route	W946
Use diversion route	<p><u>YPDN ARRIVALS</u> GUKVI BEYNO BEBEN ALLEE Q23 DN</p> <p><u>YPTN Departures</u> BEYNO GUKVI</p> <p><u>YPTN Arrivals</u> GUKVI BEYNO TN</p> <p><u>Overflying Aircraft - North</u> GUKVI IGUVI MASRA</p>
Affected Route	Y25
Use diversion route	<p><u>YPDN Departures</u> RUPEG BEYNO MILIV TNK</p>

8. CONTENT

8.1 This SUP self-cancels at 202606251400 UTC.

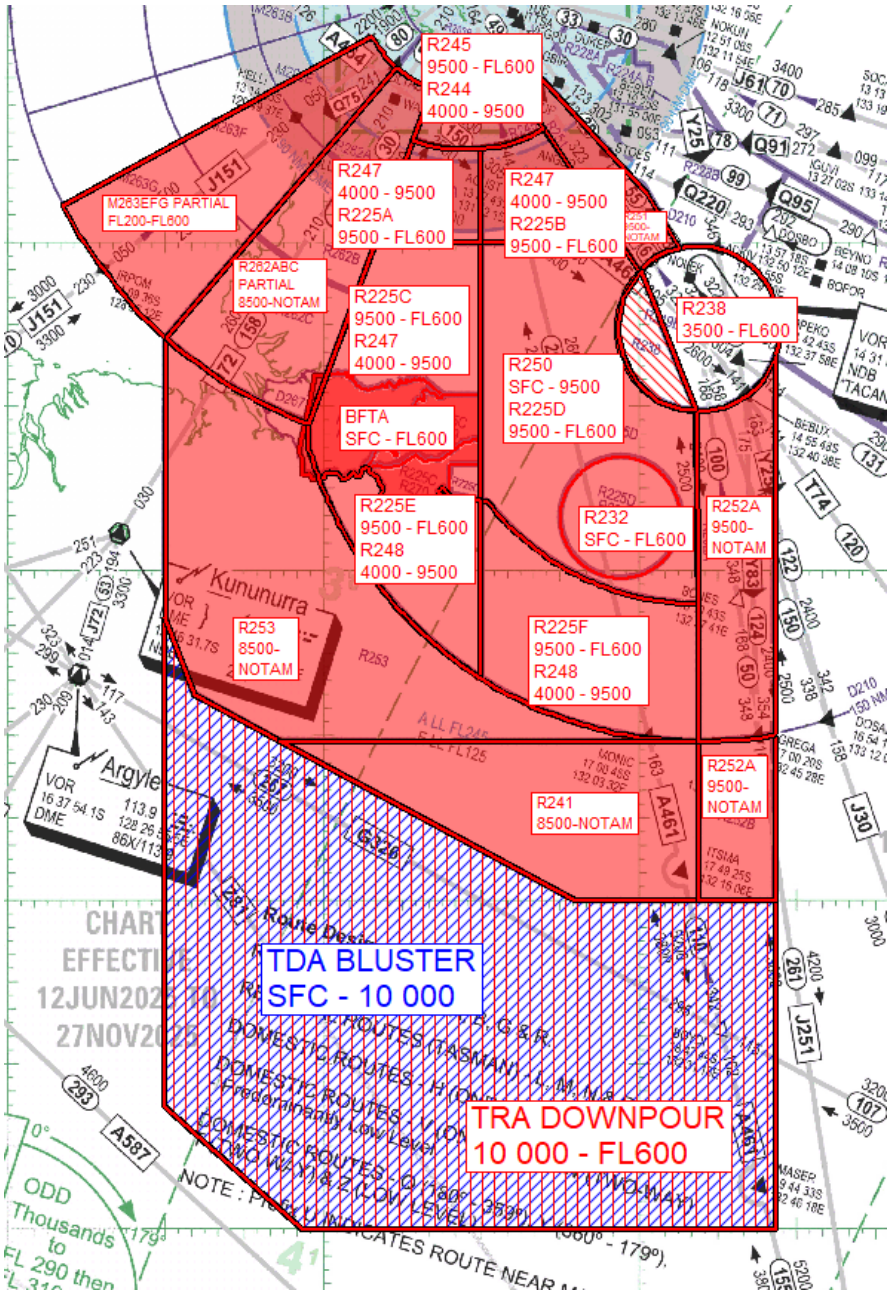
9. DISTRIBUTION

9.1 Airservices Australia website only.

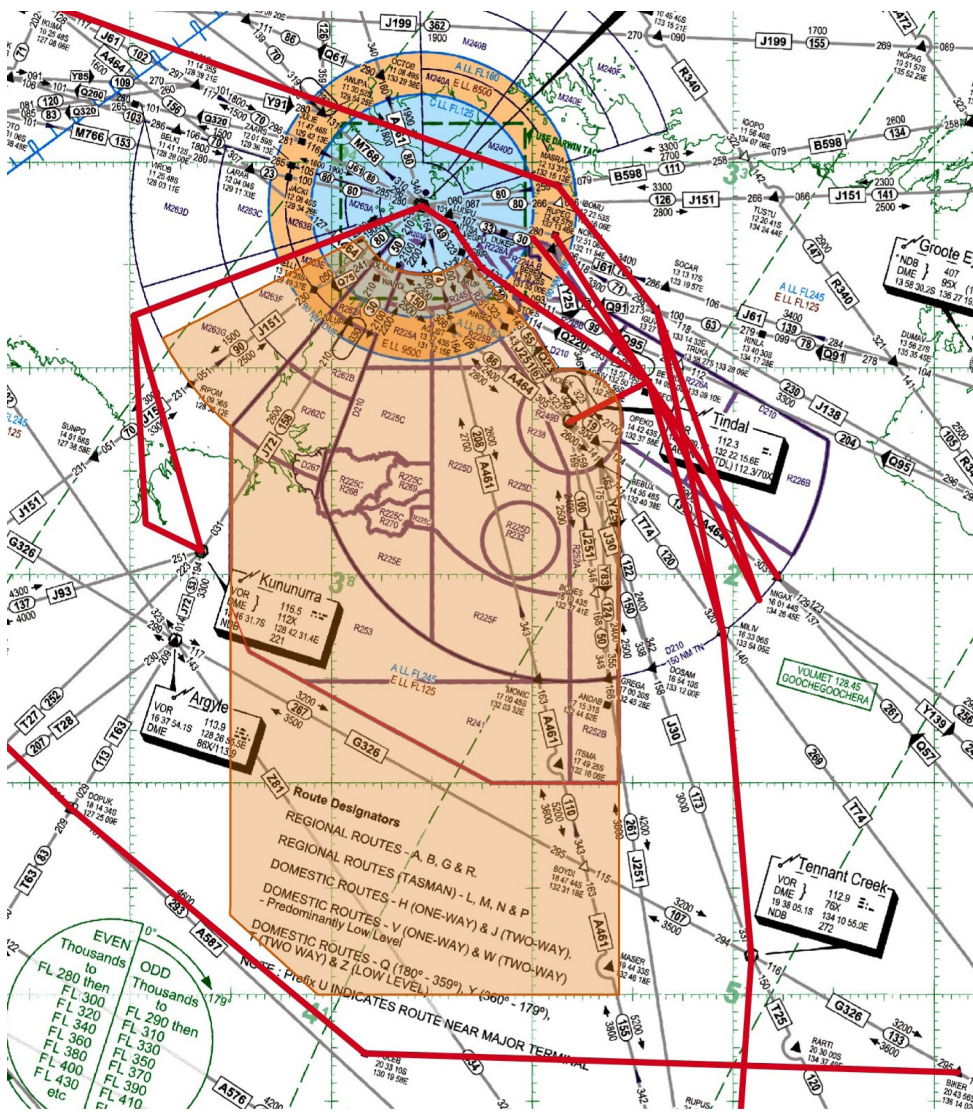
Appendices

1. AB26/DSM26 Exercise Airspace
2. AB26/DSM26 Airspace Diversion Routes
3. Concurrent Military Activities, Northern Territory, 01 – 20 June 2026

1. AB26/DSM26 Exercise Airspace



2. AB26/DSM26 Airspace Diversion Routes



**3. Concurrent Military Activities, Northern Territory,
01 – 20 June 2026**

