

**AIP SUPPLEMENT  
(SUP)****AIRAC****H50/26****Effective: 202607081600 UTC**AERONAUTICAL INFORMATION SERVICE,  
AIRSERVICES AUSTRALIA, GPO BOX 367,  
CANBERRA ACT 2601For **DISTRIBUTION** queries, contact:  
Email: [aim\\_editorial@airservicesaustralia.com](mailto:aim_editorial@airservicesaustralia.com)For **CONTENT** queries regarding this SUP, contact:  
Email: [airspace.design@airservicesaustralia.com](mailto:airspace.design@airservicesaustralia.com)**BRISBANE AERODROME (YBBN)  
DAP AMENDMENTS TO  
RWY 01L AND RWY 01R****1. INTRODUCTION**

- 1.1 This AIP SUP introduces amendments to STAR and approach procedures to RWY 01L and RWY 01R at Brisbane aerodrome (YBBN).

**2. IMPLEMENTATION**

- 2.1 The charts in the appendices become effective 202607081600 UTC and replace the same procedures published in AIP DAP.
- 2.2 Recommended coding sheets for the procedures are available on request.

**3. WAYPOINTS**

- 3.1 New waypoints:

| Name  | LAT          | LONG          |
|-------|--------------|---------------|
| ENTIK | 27 39 15.91S | 152 58 24.17E |
| GUTOR | 27 42 10.95S | 152 59 49.69E |
| ADLOP | 27 41 44.56S | 153 00 13.67E |
| DORAT | 27 43 15.98S | 153 05 52.09E |
| EGOTO | 27 37 55.73S | 153 13 39.19E |
| BUSLA | 27 36 42.45S | 152 58 32.39E |
| VEGSU | 27 37 44.83S | 152 55 22.15E |
| IRPIM | 27 29 50.98S | 152 55 49.35E |

## 4. CANCELLATION

- 4.1 This SUP will be cancelled when it is incorporated into AIP DAP, expected to be in DAP Amendment 188, effective 03 September 2026.

## 5. DISTRIBUTION

- 5.1 Airservices Australia website only.

## Appendices

1. STAR BLAKA NINE ALPHA ARRIVAL (RNAV) RWY 01L/19R
2. STAR BLAKA NINE ALPHA ARRIVAL (RNAV) RWY 01R/19L
3. STAR BLAKA NINE X-RAY ARRIVAL (RNAV) RWY 01R/19L
4. STAR ENLIP THREE ALPHA ARRIVAL (RNAV) RWY 01L/19R
5. STAR ENLIP THREE ALPHA ARRIVAL (RNAV) RWY 01R
6. STAR ENLIP THREE ALPHA ARRIVAL (RNAV) RWY 19L
7. STAR ENLIP THREE X-RAY ARRIVAL (RNAV) RWY 19L/19R
8. STAR GOMOL FIVE ALPHA ARRIVAL (RNAV) RWY 01L/19R
9. STAR GOMOL FIVE ALPHA ARRIVAL (RNAV) RWY 01R/19L
10. STAR GOMOL FIVE VICTOR ARRIVAL (RNAV) RWY 01R/19L
11. STAR GOMOL FIVE X-RAY ARRIVAL (RNAV) RWY 01R/19L
12. STAR MORBI THREE ALPHA ARRIVAL (RNAV) RWY 01L/19R
13. STAR MORBI THREE ALPHA ARRIVAL (RNAV) RWY 01R/19L
14. STAR MORBI THREE VICTOR ARRIVAL (RNAV) RWY 01L/19R
15. STAR SMOKA TWO ALPHA ARRIVAL (RNAV) RWY 01L/19R
16. STAR SMOKA TWO ALPHA ARRIVAL (RNAV) RWY 01R/19L
17. STAR SMOKA TWO MIKE ARRIVAL (RNAV) RWY 01R
18. STAR SMOKA TWO X-RAY ARRIVAL (RNAV) RWY 01L/19R
19. STAR TEBOT THREE ALPHA ARRIVAL (RNAV) RWY 01L/19R
20. STAR TEBOT THREE ALPHA ARRIVAL (RNAV) RWY 01R/19L
21. STAR TEBOT THREE X-RAY ARRIVAL (RNAV) RWY 01R
22. STAR UGTUG THREE ALPHA ARRIVAL (RNAV) RWY 01L/19R

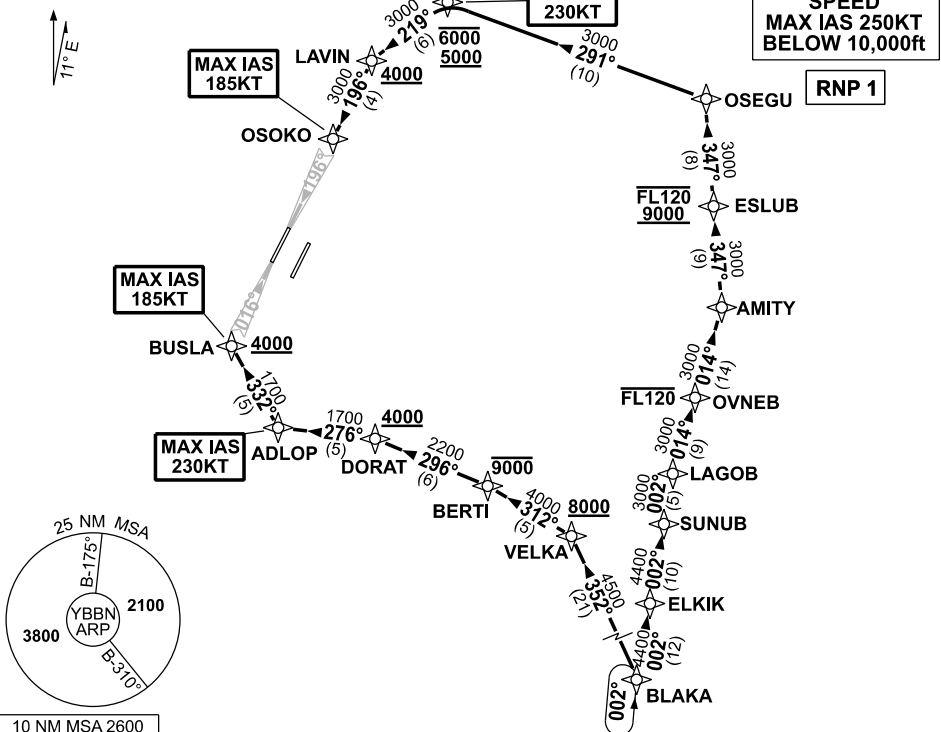
23. STAR UGTUG THREE ALPHA ARRIVAL (RNAV) RWY 01R/19L
24. STAR UGTUG THREE X-RAY ARRIVAL (RNAV) RWY 01R/19L
25. STAR WOODY THREE ALPHA ARRIVAL (RNAV) RWY 01L/19R
26. STAR WOODY THREE ALPHA ARRIVAL (RNAV) RWY 01R/19L
27. STAR WOODY THREE VICTOR ARRIVAL (RNAV) RWY 01L/19R
28. RNP Z RWY 01L
29. ILS OR LOC RWY 01L
30. RNP Z RWY 01R
31. RNP T RWY 01R
32. ILS OR LOC RWY 01R

**APPENDIX 1  
TO SUP H50/26**

**STANDARD INSTRUMENT ARRIVAL (STAR)  
BLAKA NINE ALPHA ARRIVAL (RNAV) RWY 01L/19R  
BRISBANE, QLD (YBBN)**

|                     |  |                                       |                                  |  |
|---------------------|--|---------------------------------------|----------------------------------|--|
| ATIS<br>113.2 125.5 | APP<br>NORTH 124.7<br>SOUTH 125.6<br>FINALS 119.25 | TWR<br>01L/19R 118.0<br>01R/19L 120.5 | SMC<br>DOM 121.7<br>SOUTH 122.25 | Bearings are Magnetic<br>Elevations in FEET AMSL |
|---------------------|--|---------------------------------------|----------------------------------|--|

NOT TO SCALE



10 NM MSA 2600

**BLAKA NINE ALPHA ARRIVAL**

**RWY 01L:**

- From BLAKA track 352° to VELKA  
**Cross** VELKA AT or ABV 8000ft
- Turn LEFT track 312° to BERTI  
**Cross** BERTI AT or BLW 9000ft
- Turn LEFT track 296° to DORAT  
**Cross** DORAT AT or ABV 4000ft
- Turn LEFT track 276° to ADLOP  
MAX IAS 230KT AT ADLOP
- Turn RIGHT track 332° to BUSLA  
for ILS, RNP Z or LOC RWY 01L approach  
**Cross** BUSLA AT or ABV 4000ft  
MAX IAS 185KT AT BUSLA

**RWY 19R:**

- From BLAKA track 002° to ELKIK
- Track 002° to SUNUB
- Track 002° to LAGOB
- Turn RIGHT track 014° to OVNEB  
**Cross** OVNEB AT or BLW FL120
- Track 014° to AMITY
- Turn LEFT track 347° to ESLOB  
**Cross** ESLOB BTN 9000ft and FL120
- Turn LEFT track 347° to OSEGU
- Turn LEFT track 291° to PILIG  
**Cross** PILIG BTN 5000ft and 6000ft  
MAX IAS 230KT AT PILIG
- Turn LEFT track 219° to LAVIN  
**Cross** LAVIN AT or ABV 4000ft
- Turn LEFT track 196° to OSOKO  
for ILS, RNP Z or LOC RWY 19R approach  
MAX IAS 185KT AT OSOKO

**COMMUNICATIONS FAILURE: PROCEDURE IN IMC  
IF ABLE CTC BN ATC ON TEL: (07) 3866-3694**

- Squawk 7600, comply with vertical navigation requirements, but not below MSA.
- Track via the latest STAR clearance to the nominated runway, then fly the most suitable approach in accordance with ERSA EMERG Section 1.5.

Changes: REVISED PROCEDURE.

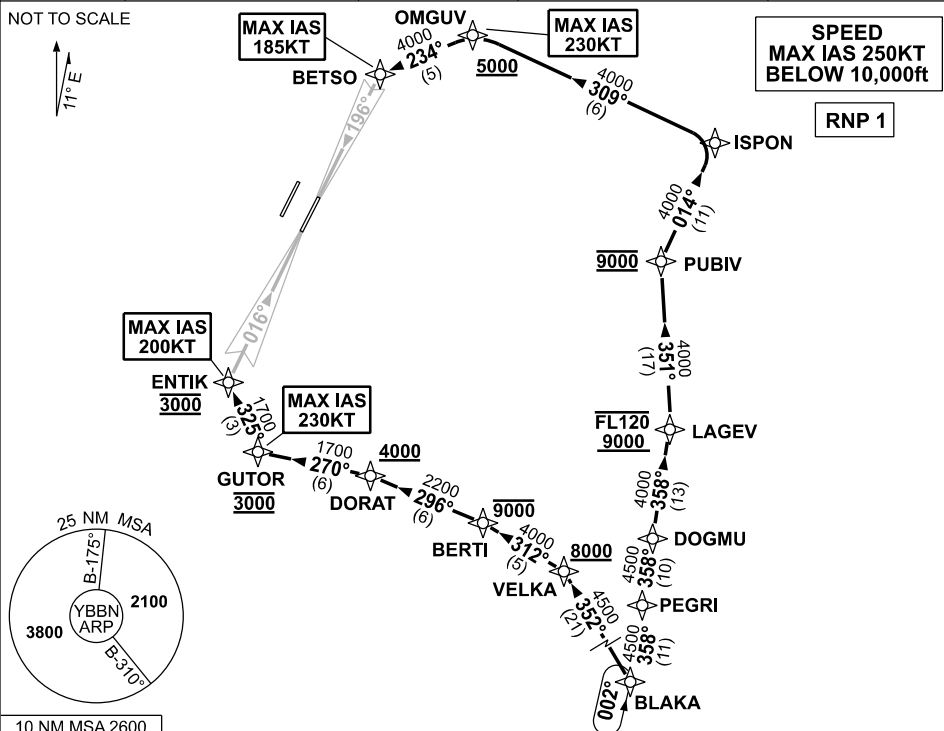
BBSNR38-SUP

**APPENDIX 2  
TO SUP H50/26**

**STANDARD INSTRUMENT ARRIVAL (STAR)  
BLAKA NINE ALPHA ARRIVAL (RNAV) RWY 01R/19L  
BRISBANE, QLD (YBBN)**

|                     |  |                                       |  |  |
|---------------------|--|---------------------------------------|--|--|
| ATIS<br>113.2 125.5 | APP<br>NORTH 124.7<br>SOUTH 125.6<br>FINALS 119.25 | TWR<br>01R/19L 120.5<br>01L/19R 118.0 | SMC<br>DOM<br>NORTH 124.05<br>SOUTH 122.25 | Bearings are Magnetic<br>Elevations in FEET AMSL |
|---------------------|--|---------------------------------------|--|--|

NOT TO SCALE



**BLAKA NINE ALPHA ARRIVAL**

**RWY 01R:**

- From BLAKA track 352° to VELKA  
**Cross** VELKA AT or ABV 8000ft
- Turn LEFT track 312° to BERTI  
**Cross** BERTI AT or BLW 9000ft
- Turn LEFT track 296° to DORAT  
**Cross** DORAT AT or ABV 4000ft
- Turn LEFT track 270° to GUTOR  
**Cross** GUTOR AT 3000ft  
MAX IAS 230KT AT GUTOR
- Turn RIGHT track 325° to ENTIK  
for ILS, RNP Z, LOC or RNP T RWY 01R  
approach  
**Cross** ENTIK AT 3000ft  
MAX IAS 200KT AT ENTIK

**RWY 19L:**

- From BLAKA track 358° to PEGRI
- Track 358° to DOGMU
- Track 358° to LAGEV  
**Cross** LAGEV BTN 9000ft and FL120
- Turn LEFT track 351° to PUBIV  
**Cross** PUBIV AT 9000ft
- Turn RIGHT track 014° to ISPON
- Turn LEFT track 309° to OMGUV  
**Cross** OMGUV AT or ABV 5000ft  
MAX IAS 230KT AT OMGUV
- Turn LEFT track 234° to BETSO  
for ILS, RNP Z, LOC or RNP T RWY 19L  
approach  
MAX IAS 185KT AT BETSO

**COMMUNICATIONS FAILURE: PROCEDURE IN IMC  
IF ABLE CTC BN ATC ON TEL: (07) 3866-3694**

- Squawk 7600, comply with vertical navigation requirements, but not below MSA.
- Track via the latest STAR clearance to the nominated runway, then fly the most suitable approach in accordance with ERSA EMERG Section 1.5.

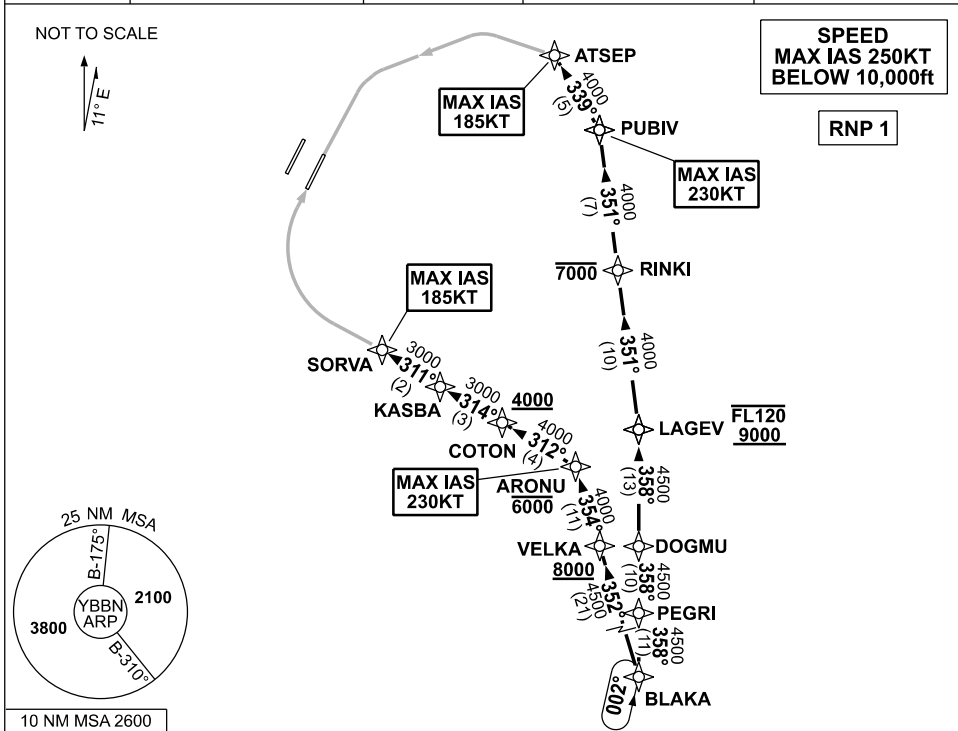
Changes: REVISED PROCEDURE.

BBNSR46-SUP

**APPENDIX 3  
TO SUP H50/26**

**STANDARD INSTRUMENT ARRIVAL (STAR)  
BLAKA NINE X-RAY ARRIVAL (RNAV) RWY 01R/19L  
BRISBANE, QLD (YBBN)**

|                     |  |                                       |                                  |  |
|---------------------|--|---------------------------------------|----------------------------------|--|
| ATIS<br>113.2 125.5 | APP<br>NORTH 124.7<br>SOUTH 125.6<br>FINALS 119.25 | TWR<br>01R/19L 120.5<br>01L/19R 118.0 | SMC<br>DOM 121.7<br>SOUTH 122.25 | Bearings are Magnetic<br>Elevations in FEET AMSL |
|---------------------|--|---------------------------------------|----------------------------------|--|



**BLAKA NINE X-RAY ARRIVAL**

**RWY 01R:**

- From BLAKA track 352° to VELKA  
**Cross** VELKA AT or ABV 8000ft
- Turn RIGHT track 354° to ARONU  
**Cross** ARONU AT or BLW 6000ft  
MAX IAS 230KT AT ARONU
- Turn LEFT track 312° to COTON  
**Cross** COTON AT or ABV 4000ft
- Turn RIGHT track 314° to KASBA
- Turn LEFT track 311° to SORVA for the RNP X or RNP S RWY 01R (AR) approach  
MAX IAS 185KT AT SORVA

**RWY 19L:**

- From BLAKA track 358° to PEGRI
- Track 358° to DOGMU
- Track 358° to LAGEV  
**Cross** LAGEV BTN 9000ft and FL120
- Turn LEFT track 351° to RINKI  
**Cross** RINKI AT or BLW 7000ft
- Track 351° to PUBIV  
MAX IAS 230KT AT PUBIV
- Turn LEFT track 339° to ATSEP for the RNP X or RNP S RWY 19L (AR) approach  
MAX IAS 185KT AT ATSEP

**COMMUNICATIONS FAILURE: PROCEDURE IN IMC  
IF ABLE CTC BN ATC ON TEL: (07) 3866-3694**

- Squawk 7600, comply with vertical navigation requirements, but not below MSA.
- Track via the latest STAR clearance to the nominated runway, then fly the most suitable approach in accordance with ERSA EMERG Section 1.5.

Changes: VALIDITY INDICATOR.

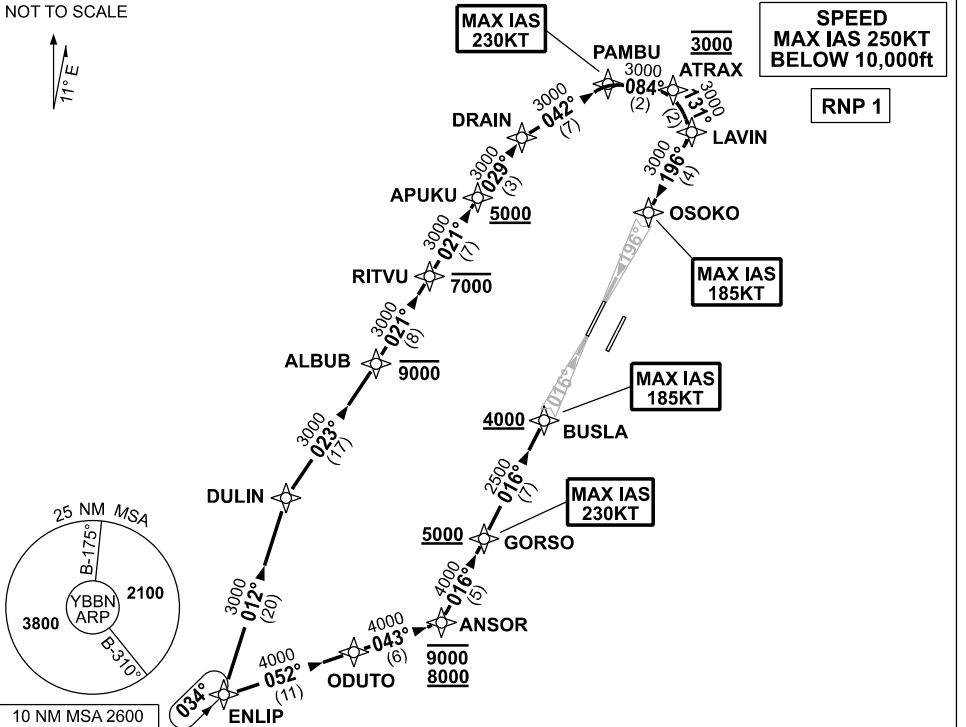
BBNSR39-SUP

**APPENDIX 4  
TO SUP H50/26**

**STANDARD INSTRUMENT ARRIVAL (STAR)  
ENLIP THREE ALPHA ARRIVAL (RNAV) RWY 01L/19R  
BRISBANE, QLD (YBBN)**

|                     |  |                                       |                                  |  |
|---------------------|--|---------------------------------------|----------------------------------|--|
| ATIS<br>113.2 125.5 | APP<br>NORTH 124.7<br>SOUTH 125.6<br>FINALS 119.25 | TWR<br>01L/19R 118.0<br>01R/19L 120.5 | SMC<br>DOM 121.7<br>SOUTH 122.25 | Bearings are Magnetic<br>Elevations in FEET AMSL |
|---------------------|--|---------------------------------------|----------------------------------|--|

NOT TO SCALE



10 NM MSA 2600

**ENLIP THREE ALPHA ARRIVAL**

**RWY 01L:**

- From ENLIP track 052° to ODUTO
- Turn LEFT track 043° to ANSOR  
**Cross** ANSOR BTN 8000ft and 9000ft
- Turn LEFT track 016° to GORSO  
**Cross** GORSO AT or ABV 5000ft  
MAX IAS 230KT AT GORSO
- Track 016° to BUSLA  
for ILS, RNP Z or LOC RWY 01L approach  
**Cross** BUSLA AT or ABV 4000ft  
MAX IAS 185KT AT BUSLA

**RWY 19R:**

- From ENLIP track 012° to DULIN
- Turn RIGHT track 029° to RITVU  
**Cross** ALBUB AT or BLW 9000ft
- Turn LEFT track 021° to APUKU  
**Cross** RITVU AT or BLW 7000ft
- Track 021° to DRAIN  
**Cross** APUKU AT or ABV 5000ft
- Turn RIGHT track 029° to DRAIN
- Turn RIGHT track 042° to PAMBU  
MAX IAS 230KT AT PAMBU
- Turn RIGHT track 084° to ATRAX  
**Cross** ATRAX AT 3000ft
- Turn RIGHT track 131° to LAVIN
- Turn RIGHT track 196° to OSOKO  
for ILS, RNP Z or LOC RWY 19R approach  
MAX IAS 185KT AT OSOKO

**COMMUNICATIONS FAILURE: PROCEDURE IN IMC  
IF ABLE CTC BN ATC ON TEL: (07) 3866-3694**

- Squawk 7600, comply with vertical navigation requirements, but not below MSA.
- Track via the latest STAR clearance to the nominated runway, then fly the most suitable approach in accordance with ERSA EMERG Section 1.5.

Changes: REVISED PROCEDURE.

BBNSR51-SUP

**APPENDIX 5  
TO SUP H50/26**

**STANDARD INSTRUMENT ARRIVAL (STAR)  
ENLIP THREE ALPHA ARRIVAL (RNAV) RWY 01R  
BRISBANE, QLD (YBBN)**

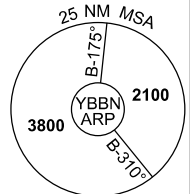
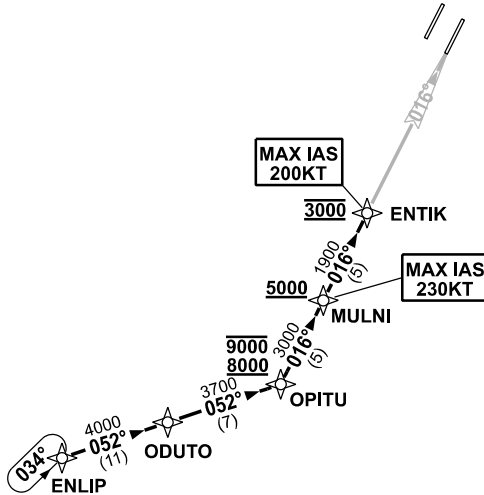
|                     |  |                                       |                                  |  |
|---------------------|--|---------------------------------------|----------------------------------|--|
| ATIS<br>113.2 125.5 | APP<br>NORTH 124.7 SOUTH 125.6 FINALS 119.25 | TWR<br>01R/19L 120.5<br>01L/19R 118.0 | SMC<br>DOM 121.7<br>SOUTH 122.25 | Bearings are Magnetic<br>Elevations in FEET AMSL |
|---------------------|--|---------------------------------------|----------------------------------|--|

NOT TO SCALE



**SPEED  
MAX IAS 250KT  
BELOW 10,000ft**

**RNP 1**



10 NM MSA 2600

**ENLIP THREE ALPHA ARRIVAL**

**RWY 01R:**

- From ENLIP track 052° to ODUTO
- Track 052° to OPITU  
**Cross** OPITU BTN 8000ft and 9000ft
- Turn **LEFT** track 016° to MULNI  
**Cross** MULNI AT or ABV 5000ft  
**MAX IAS 230KT AT MULNI**
- Track 016° to ENTIK  
for ILS, RNP Z, LOC or RNP T  
RWY 01R approach  
**Cross** ENTIK AT 3000ft  
**MAX IAS 200KT AT ENTIK**

**COMMUNICATIONS FAILURE: PROCEDURE IN IMC  
IF ABLE CTC BN ATC ON TEL: (07) 3866-3694**

- Squawk 7600, comply with vertical navigation requirements, but not below MSA.
- Track via the latest STAR clearance to the nominated runway, then fly the most suitable approach in accordance with ERSA EMERG Section 1.5.

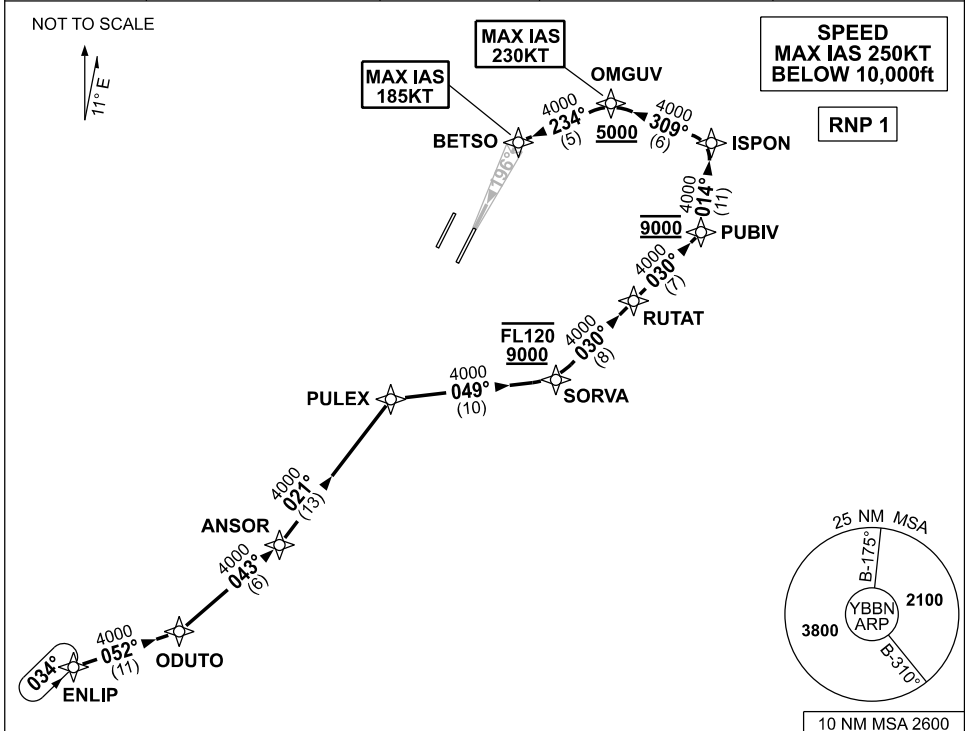
Changes: REVISED PROCEDURE.

BBNSR52-SUP

**APPENDIX 6  
TO SUP H50/26**

**STANDARD INSTRUMENT ARRIVAL (STAR)  
ENLIP THREE ALPHA ARRIVAL (RNAV) RWY 19L  
BRISBANE, QLD (YBBN)**

|                     |  |                                       |                                  |  |
|---------------------|--|---------------------------------------|----------------------------------|--|
| ATIS<br>113.2 125.5 | APP<br>NORTH 124.7<br>SOUTH 125.6<br>FINALS 119.25 | TWR<br>01R/19L 120.5<br>01L/19R 118.0 | SMC<br>DOM 121.7<br>SOUTH 122.25 | Bearings are Magnetic<br>Elevations in FEET AMSL |
|---------------------|--|---------------------------------------|----------------------------------|--|



**ENLIP THREE ALPHA ARRIVAL  
RWY 19L:**

- From ENLIP track 052° to ODUTO
- Turn LEFT track 043° to ANSOR
- Turn LEFT track 021° to PULEX
- Turn RIGHT track 049° to SORVA  
**Cross** SORVA BTN 9000ft and FL120
- Turn LEFT track 030° to RUTAT
- Track 030° to PUBIV  
**Cross** PUBIV AT 9000ft
- Turn LEFT track 014° to ISPON
- Turn LEFT track 309° to OMGUV  
**Cross** OMGUV AT or ABV 5000ft  
**MAX IAS 230KT** AT OMGUV
- Turn LEFT track 234° to BETSO  
for ILS, RNP Z, LOC or RNP T RWY 19L approach  
**MAX IAS 185KT** AT BETSO

**COMMUNICATIONS FAILURE: PROCEDURE IN IMC  
IF ABLE CTC BN ATC ON TEL: (07) 3866-3694**

- Squawk 7600, comply with vertical navigation requirements, but not below MSA.
- Track via the latest STAR clearance to the nominated runway, then fly the most suitable approach in accordance with ERSA EMERG Section 1.5.

Changes: VALIDITY INDICATOR.

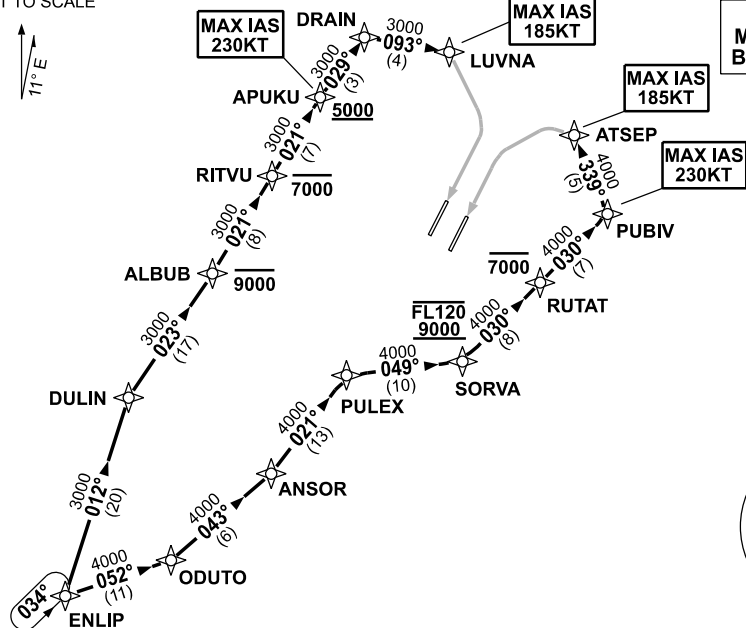
BBSNR56-SUP

**APPENDIX 7  
TO SUP H50/26**

**STANDARD INSTRUMENT ARRIVAL (STAR)  
ENLIP THREE X-RAY ARRIVAL (RNAV) RWY 19L/19R  
BRISBANE, QLD (YBBN)**

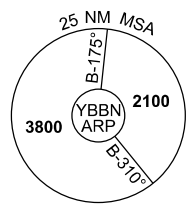
|                     |  |                                       |                                  |  |
|---------------------|--|---------------------------------------|----------------------------------|--|
| ATIS<br>113.2 125.5 | APP<br>NORTH 124.7<br>SOUTH 125.6<br>FINALS 119.25 | TWR<br>01L/19R 118.0<br>01R/19L 120.5 | SMC<br>DOM 121.7<br>SOUTH 122.25 | Bearings are Magnetic<br>Elevations in FEET AMSL |
|---------------------|--|---------------------------------------|----------------------------------|--|

NOT TO SCALE



**SPEED  
MAX IAS 250KT  
BELOW 10,000ft**

**RNP 1**



10 NM MSA 2600

**ENLIP THREE X-RAY ARRIVAL**

**RWY 19L:**

- From ENLIP track 052° to ODUTO
- Turn LEFT track 043° to ANSOR
- Turn LEFT track 021° to PULEX
- Turn RIGHT track 049° to SORVA
- **Cross** SORVA BTN 9000ft and FL120
- Turn LEFT track 030° to RUTAT
- **Cross** RUTAT AT or BLW 7000ft
- Track 030° to PUBIV
- MAX IAS 230KT AT PUBIV
- Turn LEFT track 339° to ATSEP for RNP X or RNP S RWY 19L (AR) approach
- MAX IAS 185KT AT ATSEP

**RWY 19R:**

- From ENLIP track 012° to DULIN
- Turn RIGHT track 023° to ALBUB
- **Cross** ALBUB AT or BLW 9000ft
- Turn LEFT track 021° to RITVU
- **Cross** RITVU AT or BLW 7000ft
- Track 021° to APUKU
- **Cross** APUKU AT or ABV 5000ft
- MAX IAS 230KT AT APUKU
- Turn RIGHT track 029° to DRAIN
- Turn RIGHT track 093° to LUVNA for RNP X RWY 19R (AR) approach
- MAX IAS 185KT AT LUVNA

**COMMUNICATIONS FAILURE: PROCEDURE IN IMC  
IF ABLE CTC BN ATC ON TEL: (07) 3866-3694**

- Squawk 7600, comply with vertical navigation requirements, but not below MSA.
- Track via the latest STAR clearance to the nominated runway, then fly the most suitable approach in accordance with ERSA EMERG Section 1.5.

Changes: VALIDITY INDICATOR.

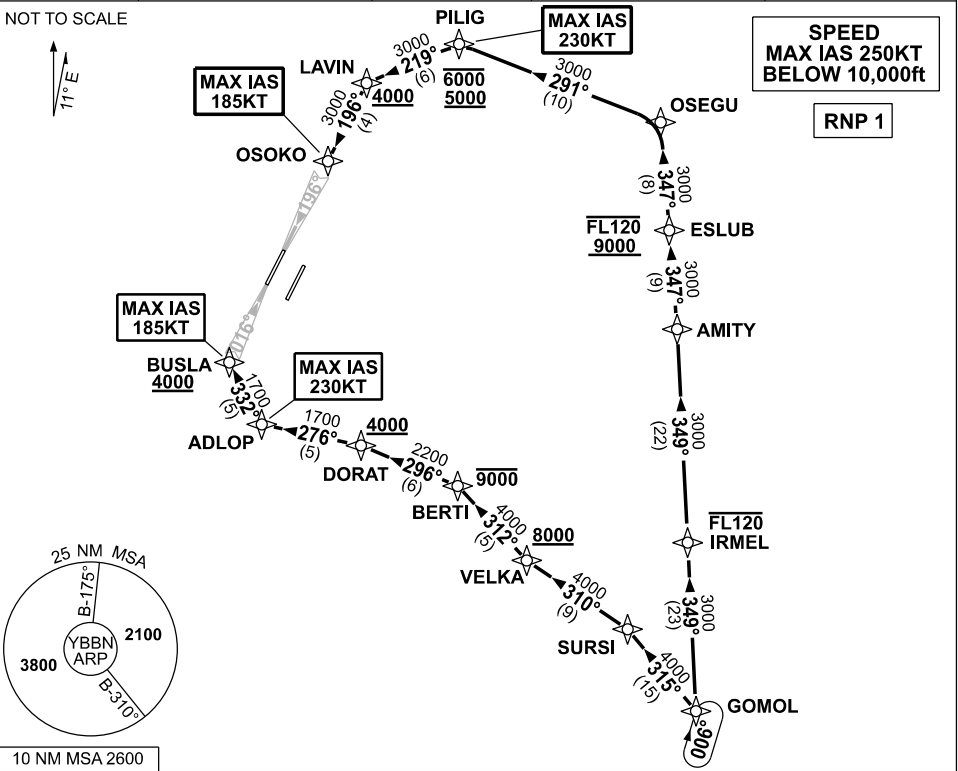
BBNSR53-SUP

**APPENDIX 8  
TO SUP H50/26**

**STANDARD INSTRUMENT ARRIVAL (STAR)  
GOMOL FIVE ALPHA ARRIVAL (RNAV) RWY 01L/19R  
BRISBANE, QLD (YBBN)**

|                     |  |                                       |                                  |  |
|---------------------|--|---------------------------------------|----------------------------------|--|
| ATIS<br>113.2 125.5 | APP<br>NORTH 124.7<br>SOUTH 125.6<br>FINALS 119.25 | TWR<br>01L/19R 118.0<br>01R/19L 120.5 | SMC<br>DOM 121.7<br>SOUTH 122.25 | Bearings are Magnetic<br>Elevations in FEET AMSL |
|---------------------|--|---------------------------------------|----------------------------------|--|

NOT TO SCALE



10 NM MSA 2600

**GOMOL FIVE ALPHA ARRIVAL  
RWY 01L:**

- From GOMOL track 315° to SURSI
- Turn LEFT track 310° to VELKA  
**Cross** VELKA AT or ABV 8000ft
- Turn RIGHT track 312° to BERTI  
**Cross** BERTI AT or BLW 9000ft
- Turn LEFT track 296° to DORAT  
**Cross** DORAT AT or ABV 4000ft
- Turn LEFT track 276° to ADLOP  
MAX IAS 230KT AT ADLOP
- Turn RIGHT track 332° to BUSLA  
for ILS, RNP Z or LOC RWY 01L approach  
**Cross** BUSLA AT or ABV 4000ft  
MAX IAS 185KT AT BUSLA

**RWY 19R:**

- From GOMOL track 349° to IRMEL  
**Cross** IRMEL AT or BLW FL120
- Track 349° to AMITY
- Turn LEFT track 347° to ESLUB  
**Cross** ESLUB BTN 9000ft and FL120
- Track 347° to OSEGU
- Turn LEFT track 291° to PILIG  
**Cross** PILIG BTN 5000ft and 6000ft  
MAX IAS 230KT AT PILIG
- Turn LEFT track 219° to LAVIN  
**Cross** LAVIN AT or ABV 4000ft
- Turn LEFT track 196° to OSOKO  
for ILS, RNP Z or LOC RWY 19R approach  
MAX IAS 185KT AT OSOKO

**COMMUNICATIONS FAILURE: PROCEDURE IN IMC**

**IF ABLE CTC BN ATC ON TEL: (07) 3866-3694**

- Squawk 7600, comply with vertical navigation requirements, but not below MSA.
- Track via the latest STAR clearance to the nominated runway, then fly the most suitable approach in accordance with ERSA EMERG Section 1.5.

Changes: REVISED PROCEDURE.

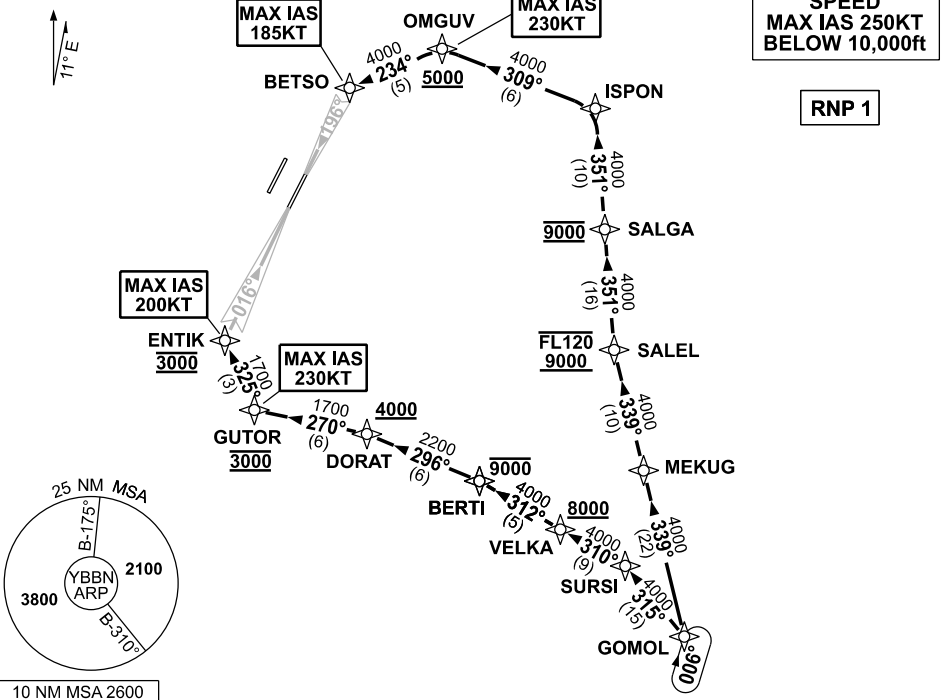
BBSNR47-SUP

**APPENDIX 9  
TO SUP H50/26**

**STANDARD INSTRUMENT ARRIVAL (STAR)  
GOMOL FIVE ALPHA ARRIVAL (RNAV) RWY 01R/19L  
BRISBANE, QLD (YBBN)**

|                     |  |                                       |                                  |  |
|---------------------|--|---------------------------------------|----------------------------------|--|
| ATIS<br>113.2 125.5 | APP<br>NORTH 124.7<br>SOUTH 125.6<br>FINALS 119.25 | TWR<br>01R/19L 120.5<br>01L/19R 118.0 | SMC<br>DOM 121.7<br>SOUTH 122.25 | Bearings are Magnetic<br>Elevations in FEET AMSL |
|---------------------|--|---------------------------------------|----------------------------------|--|

NOT TO SCALE



**GOMOL FIVE ALPHA ARRIVAL**

**RWY 01R:**

- From GOMOL track 315° to SURSI
- Turn LEFT track 310° to VELKA  
**Cross** VELKA AT or ABV 8000ft
- Turn RIGHT track 312° to BERTI  
**Cross** BERTI AT or BLW 9000ft
- Turn LEFT track 296° to DORAT  
**Cross** DORAT AT or ABV 4000ft
- Turn LEFT track 270° to GUTOR  
**Cross** GUTOR AT 3000ft  
MAX IAS 230KT AT GUTOR
- Turn RIGHT track 325° to ENTIK for ILS, RNP Z, LOC or RNP T RWY 01R approach  
**Cross** ENTIK AT 3000ft  
MAX IAS 200KT AT ENTIK

**RWY 19L:**

- From GOMOL track 339° to MEKUG
- Track 339° to SALEL  
**Cross** SALEL BTN 9000ft and FL120
- Turn RIGHT track 351° to SALGA  
**Cross** SALGA AT 9000ft
- Track 351° to ISPON
- Turn LEFT track 309° to OMGUV  
**Cross** OMGUV AT or ABV 5000ft  
MAX IAS 230KT AT OMGUV
- Turn LEFT track 234° to BETSO for ILS, RNP Z, LOC or RNP T RWY 19L approach  
MAX IAS 185KT AT BETSO

**COMMUNICATIONS FAILURE: PROCEDURE IN IMC**

**IF ABLE CTC BN ATC ON TEL: (07) 3866-3694**

- Squawk 7600, comply with vertical navigation requirements, but not below MSA.
- Track via the latest STAR clearance to the nominated runway, then fly the most suitable approach in accordance with ERSA EMERG Section 1.5.

Changes: REVISED PROCEDURE.

BBSNR48-SUP

**APPENDIX 10  
TO SUP H50/26**

**STANDARD INSTRUMENT ARRIVAL (STAR)  
GOMOL FIVE VICTOR ARRIVAL (RNAV) RWY 01R/19L  
BRISBANE, QLD (YBBN)**

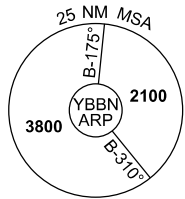
|                     |  |                                       |                                  |  |
|---------------------|--|---------------------------------------|----------------------------------|--|
| ATIS<br>113.2 125.5 | APP<br>NORTH 124.7<br>SOUTH 125.6<br>FINALS 119.25 | TWR<br>01R/19L 120.5<br>01L/19R 118.0 | SMC<br>DOM 121.7<br>SOUTH 122.25 | Bearings are Magnetic<br>Elevations in FEET AMSL |
|---------------------|--|---------------------------------------|----------------------------------|--|

NOT TO SCALE

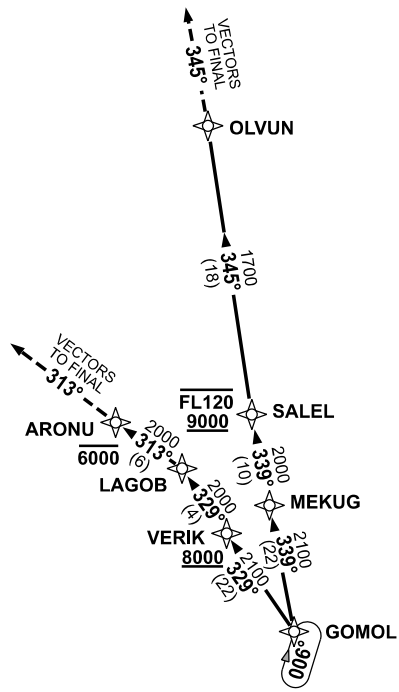


**SPEED  
MAX IAS 250KT  
BELOW 10,000ft**

**RNP 1**



10 NM MSA 2600



**GOMOL FIVE VICTOR ARRIVAL**

**RWY 01R:**

- From GOMOL track 329° to VERIK  
**Cross** VERIK AT or ABV 8000ft
- Track 329° to LAGOB
- Turn LEFT track 313° to ARONU  
**Cross** ARONU AT or BLW 6000ft
- Track 313° EXPECT radar vectors to final

**RWY 19L:**

- From GOMOL track 339° to MEKUG
- Track 339° to SALEL  
**Cross** SALEL BTN 9000ft and FL120
- Turn RIGHT track 345° to OLUVN
- Track 345° EXPECT radar vectors to final

**COMMUNICATIONS FAILURE: PROCEDURE IN IMC  
IF ABLE CTC BN ATC ON TEL: (07) 3866-3694**

- Squawk 7600, comply with vertical navigation requirements, but not below MSA.
- Track via the latest STAR clearance to the nominated runway, then fly the most suitable approach in accordance with ERSA EMERG Section 1.5.

Changes: VALIDITY INDICATOR.

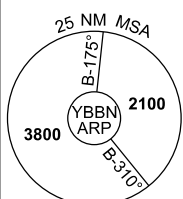
BBNSR50-SUP

**APPENDIX 11  
TO SUP H50/26**

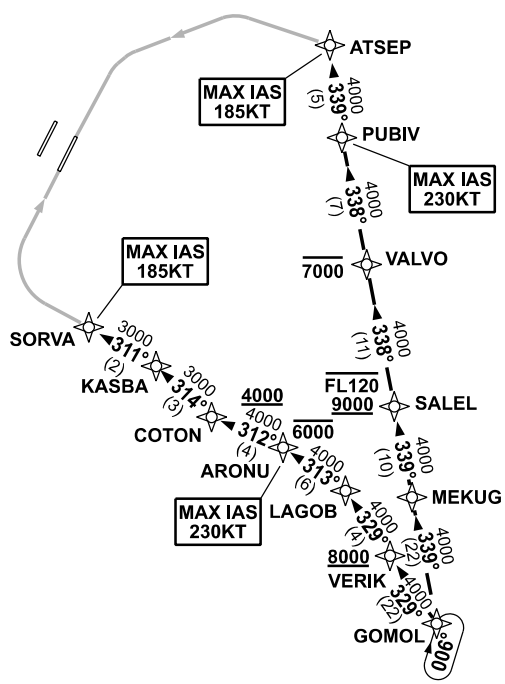
**STANDARD INSTRUMENT ARRIVAL (STAR)  
GOMOL FIVE X-RAY ARRIVAL (RNAV) RWY 01R/19L  
BRISBANE, QLD (YBBN)**

|                     |  |                                       |                                  |  |
|---------------------|--|---------------------------------------|----------------------------------|--|
| ATIS<br>113.2 125.5 | APP<br>NORTH 124.7<br>SOUTH 125.6<br>FINALS 119.25 | TWR<br>01R/19L 120.5<br>01L/19R 118.0 | SMC<br>DOM 121.7<br>SOUTH 122.25 | Bearings are Magnetic<br>Elevations in FEET AMSL |
|---------------------|--|---------------------------------------|----------------------------------|--|

NOT TO SCALE



10 NM MSA 2600



**SPEED  
MAX IAS 250KT  
BELOW 10,000ft**

**RNP 1**

**GOMOL FIVE X-RAY ARRIVAL**

**RWY 01R:**

- From GOMOL track 329° to VERIK  
**Cross** VERIK AT or ABV 8000ft
- Track 329° to LAGOB
- Turn LEFT track 313° to ARONU  
**Cross** ARONU AT or BLW 6000ft  
MAX IAS 230KT AT ARONU
- Turn LEFT track 312° to COTON  
**Cross** COTON AT or ABV 4000ft
- Turn RIGHT track 314° to KASBA
- Turn LEFT track 311° to SORVA  
for RNP X or RNP S RWY 01R (AR) approach  
MAX IAS 185KT AT SORVA

**RWY 19L:**

- From GOMOL track 339° to MEKUG
- Track 339° to SALEL  
**Cross** SALEL BTN 9000ft and FL120
- Track 338° to VALVO  
**Cross** VALVO AT or BLW 7000ft
- Track 338° to PUBIV  
MAX IAS 230KT AT PUBIV
- Turn RIGHT track 339° to ATSEP  
for RNP X or RNP S RWY 19L (AR) approach  
MAX IAS 185KT AT ATSEP

**COMMUNICATIONS FAILURE: PROCEDURE IN IMC  
IF ABLE CTC BN ATC ON TEL: (07) 3866-3694**

- Squawk 7600, comply with vertical navigation requirements, but not below MSA.
- Track via the latest STAR clearance to the nominated runway, then fly the most suitable approach in accordance with ERSA EMERG Section 1.5.

Changes: VALIDITY INDICATOR.

BBNSR49-SUP

**APPENDIX 12  
TO SUP H50/26**

**STANDARD INSTRUMENT ARRIVAL (STAR)  
MORBI THREE ALPHA ARRIVAL (RNAV) RWY 01L/19R  
BRISBANE, QLD (YBBN)**

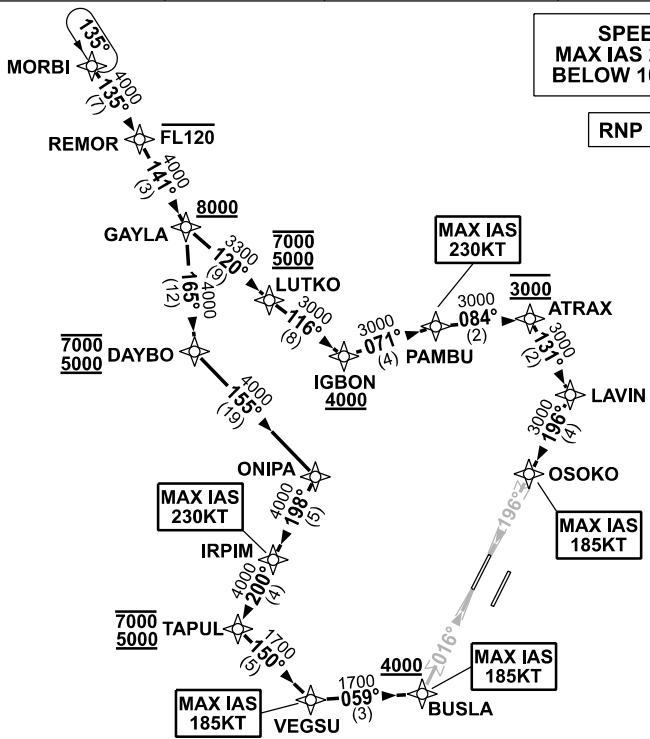
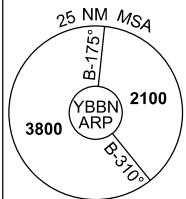
|                     |  |                                       |                                  |  |
|---------------------|--|---------------------------------------|----------------------------------|--|
| ATIS<br>113.2 125.5 | APP<br>NORTH 124.7<br>SOUTH 125.6<br>FINALS 119.25 | TWR<br>01L/19R 118.0<br>01R/19L 120.5 | SMC<br>DOM 121.7<br>SOUTH 122.25 | Bearings are Magnetic<br>Elevations in FEET AMSL |
|---------------------|--|---------------------------------------|----------------------------------|--|

NOT TO SCALE



**SPEED  
MAX IAS 250KT  
BELOW 10,000ft**

**RNP 1**



**MORBI THREE ALPHA ARRIVAL  
RWY 01L:**

- From MORBI track 135° to REMOR  
**Cross** REMOR AT or BLW FL120
- Turn RIGHT track 141° to GAYLA  
**Cross** GAYLA AT or ABV 8000ft
- Turn RIGHT track 165° to DAYBO  
**Cross** DAYBO BTN 5000ft and 7000ft
- Turn LEFT track 155° to ONIPA
- Turn RIGHT track 198° to IRPIM  
MAX IAS 230KT AT IRPIM
- Turn RIGHT track 200° to TAPUL  
**Cross** TAPUL BTN 5000ft and 7000ft
- Turn LEFT track 150° to VEGSU  
MAX IAS 185KT AT VEGSU
- Turn LEFT track 059° to BUSLA  
for ILS, RNP Z or LOC RWY 01L approach  
**Cross** BUSLA AT or ABV 4000ft  
MAX IAS 185KT AT BUSLA

**RWY 19R:**

- From MORBI track 135° to REMOR  
**Cross** REMOR AT or BLW FL120
- Turn RIGHT track 141° to GAYLA  
**Cross** GAYLA AT or ABV 8000ft
- Turn LEFT track 120° to LUTKO  
**Cross** LUTKO BTN 5000ft and 7000ft
- Turn LEFT track 116° to IGBON  
**Cross** IGBON AT or ABV 4000ft
- Turn LEFT track 071° to PAMBU  
MAX IAS 230KT AT PAMBU
- Turn RIGHT track 084° to ATRAX  
**Cross** ATRAX AT 3000ft
- Turn RIGHT track 131° to LAVIN
- Turn RIGHT track 196° to OSOKO  
for ILS, RNP Z or LOC RWY 19R approach  
MAX IAS 185KT AT OSOKO

**COMMUNICATIONS FAILURE: PROCEDURE IN IMC  
IF ABLE CTC BN ATC ON TEL: (07) 3866-3694**

- Squawk 7600, comply with vertical navigation requirements, but not below MSA.
- Track via the latest STAR clearance to the nominated runway, then fly the most suitable approach in accordance with ERSA EMERG Section 1.5.

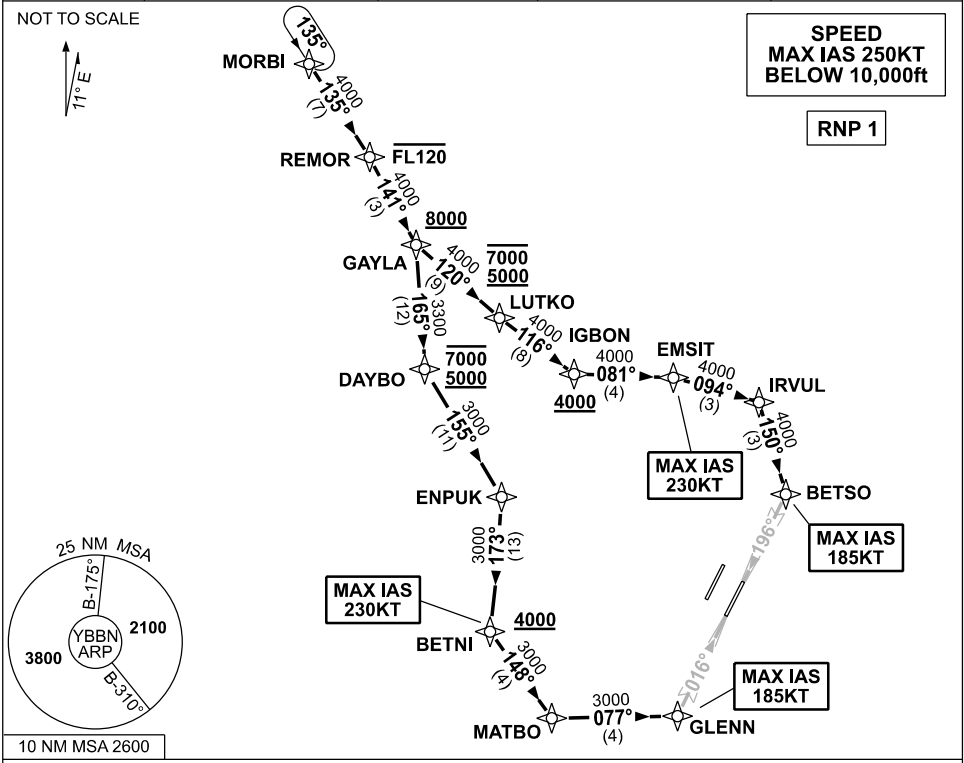
Changes: REVISED PROCEDURE.

BBNSR35-SUP

**APPENDIX 13  
TO SUP H50/26**

**STANDARD INSTRUMENT ARRIVAL (STAR)  
MORBI THREE ALPHA ARRIVAL (RNAV) RWY 01R/19L  
BRISBANE, QLD (YBBN)**

|                     |  |                                       |                                  |  |
|---------------------|--|---------------------------------------|----------------------------------|--|
| ATIS<br>113.2 125.5 | APP<br>NORTH 124.7<br>SOUTH 125.6<br>FINALS 119.25 | TWR<br>01R/19L 120.5<br>01L/19R 118.0 | SMC<br>DOM 121.7<br>SOUTH 122.25 | Bearings are Magnetic<br>Elevations in FEET AMSL |
|---------------------|--|---------------------------------------|----------------------------------|--|



**MORBI THREE ALPHA ARRIVAL**

**RWY 01R:**

- From MORBI track 135° to REMOR  
**Cross** REMOR AT or BLW FL120
- Turn **RIGHT** track 141° to GAYLA  
**Cross** GAYLA AT or ABV 8000ft
- Turn **RIGHT** track 165° to DAYBO  
**Cross** DAYBO BTN 5000ft and 7000ft
- Turn **LEFT** track 155° to ENPUK
- Turn **RIGHT** track 173° to BETNI  
**Cross** BETNI AT or ABV 4000ft  
MAX IAS 230KT AT BETNI
- Turn **LEFT** track 148° to MATBO
- Turn **LEFT** track 077° to GLENN for ILS,  
RNP Z, LOC or RNP T RWY 01R approach  
MAX IAS 185KT AT GLENN

**RWY 19L:**

- From MORBI track 135° to REMOR  
**Cross** REMOR AT or BLW FL120
- Turn **RIGHT** track 141° to GAYLA  
**Cross** GAYLA AT or ABV 8000ft
- Turn **LEFT** track 120° to LUTKO  
**Cross** LUTKO BTN 5000ft and 7000ft
- Turn **LEFT** track 116° to IGBON  
**Cross** IGBON AT or ABV 4000ft
- Turn **LEFT** track 081° to EMSIT  
MAX IAS 230KT AT EMSIT
- Turn **RIGHT** track 094° to IRVUL
- Turn **RIGHT** track 150° to BETSO for ILS,  
RNP Z, LOC or RNP T RWY 19L approach  
MAX IAS 185KT AT BETSO

**COMMUNICATIONS FAILURE: PROCEDURE IN IMC  
IF ABLE CTC BN ATC ON TEL: (07) 3866-3694**

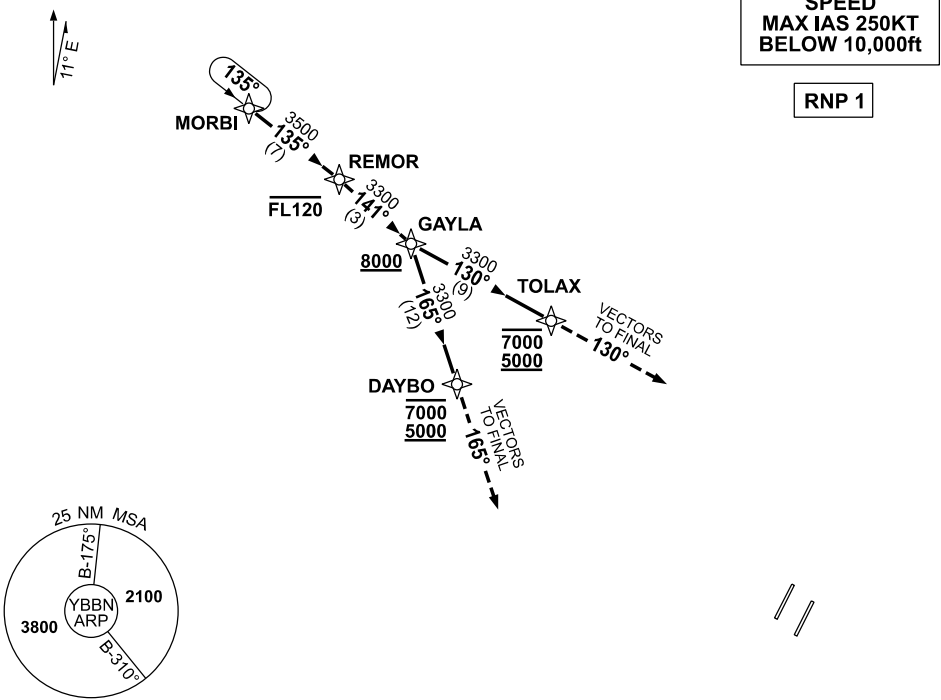
- Squawk 7600, comply with vertical navigation requirements, but not below MSA.
- Track via the latest STAR clearance to the nominated runway, then fly the most suitable approach in accordance with ERSA EMERG Section 1.5.

**APPENDIX 14  
TO SUP H50/26**

**STANDARD INSTRUMENT ARRIVAL (STAR)  
MORBI THREE VICTOR ARRIVAL (RNAV) RWY 01L/19R  
BRISBANE, QLD (YBBN)**

|                     |  |                                       |                               |  |
|---------------------|--|---------------------------------------|-------------------------------|--|
| ATIS<br>113.2 125.5 | APP<br>NORTH 124.7 SOUTH 125.6 FINALS 119.25 | TWR<br>01L/19R 118.0<br>01R/19L 120.5 | SMC<br>DOM 121.7 SOUTH 122.25 | Bearings are Magnetic<br>Elevations in FEET AMSL |
|---------------------|--|---------------------------------------|-------------------------------|--|

NOT TO SCALE



10 NM MSA 2600

**MORBI THREE VICTOR ARRIVAL**

**RWY 01L:**

- From MORBI track 135° to REMOR  
**Cross** REMOR AT or BLW FL120
- Turn RIGHT track 141° to GAYLA  
**Cross** GAYLA AT or ABV 8000ft
- Turn RIGHT track 165° to DAYBO  
**Cross** DAYBO BTN 5000ft and 7000ft
- Track 165°, EXPECT radar vectors to final

**RWY 19R:**

- From MORBI track 135° to REMOR  
**Cross** REMOR AT or BLW FL120
- Turn RIGHT track 141° to GAYLA  
**Cross** GAYLA AT or ABV 8000ft
- Turn LEFT track 130° to TOLAX  
**Cross** TOLAX BTN 5000ft and 7000ft
- Track 130°, EXPECT radar vectors to final

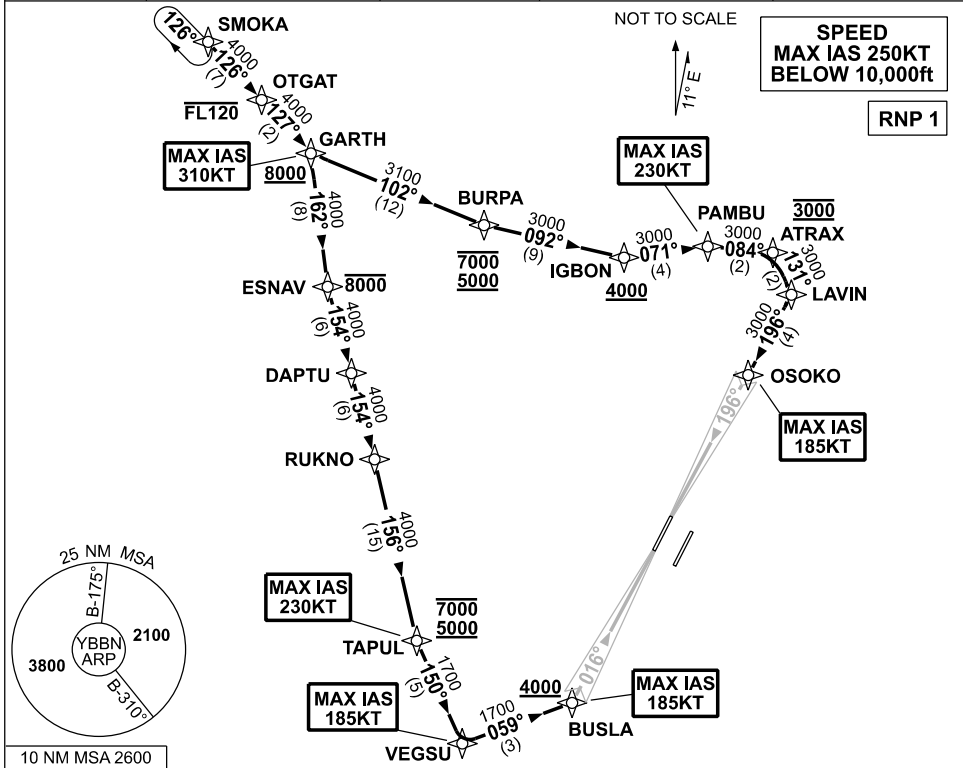
**COMMUNICATIONS FAILURE: PROCEDURE IN IMC  
IF ABLE CTC BN ATC ON TEL: (07) 3866-3694**

- Squawk 7600, comply with vertical navigation requirements, but not below MSA.
- Track via the latest STAR clearance to the nominated runway, then fly the most suitable approach in accordance with ERSA EMERG Section 1.5.

**APPENDIX 15  
TO SUP H50/26**

**STANDARD INSTRUMENT ARRIVAL (STAR)  
SMOKA TWO ALPHA ARRIVAL (RNAV) RWY 01L/19R  
BRISBANE, QLD (YBBN)**

|                     |  |                                       |  |  |
|---------------------|--|---------------------------------------|--|--|
| ATIS<br>113.2 125.5 | APP<br>NORTH 124.7<br>SOUTH 125.6<br>FINALS 119.25 | TWR<br>01L/19R 118.0<br>01R/19L 120.5 | SMC<br>NORTH 124.05<br>DOM 121.7<br>SOUTH 122.25 | Bearings are Magnetic<br>Elevations in FEET AMSL |
|---------------------|--|---------------------------------------|--|--|



10 NM MSA 2600

**SMOKA TWO ALPHA ARRIVAL  
RWY 01L:**

- From SMOKA track 126° to OTGAT  
Cross OTGAT AT or BLW FL120
- Track 127° to GARTH  
Cross GARTH AT or ABV 8000ft  
MAX IAS 310KT AT GARTH
- Turn RIGHT track 162° to ESNV  
Cross ESNV AT or BLW 8000ft
- Turn LEFT track 154° to DAPTU
- Track 154° to RUKNO
- Turn RIGHT track 156° to TAPUL  
Cross TAPUL BTN 5000ft and 7000ft  
MAX IAS 230KT AT TAPUL
- Turn LEFT track 150° to VEGSU  
MAX IAS 185KT AT VEGSU
- Turn LEFT track 059° to BUSLA  
for ILS, RNP Z or LOC RWY 01L approach  
Cross BUSLA AT or ABV 4000ft  
MAX IAS 185KT AT BUSLA

**RWY 19R:**

- From SMOKA track 126° TO OTGAT  
Cross OTGAT AT or BLW FL120
- Track 127° to GARTH  
Cross GARTH AT or ABV 8000ft
- Turn LEFT track 102° to BURPA  
Cross BURPA BTN 5000ft and 7000ft
- Turn LEFT track 092° to IGBON  
Cross IGBON AT or ABV 4000ft
- Turn LEFT track 071° to PAMBU  
MAX IAS 230KT AT PAMBU
- Turn RIGHT track 084° to ATRAX  
Cross ATRAX AT 3000ft
- Turn RIGHT track 131° to LAVIN
- Turn RIGHT track 196° to OSOKO  
for ILS, RNP Z or LOC RWY 19R approach  
MAX IAS 185KT AT OSOKO

**COMMUNICATIONS FAILURE: PROCEDURE IN IMC  
IF ABLE CTC BN ATC ON TEL: (07) 3866-3694**

- Squawk 7600, comply with vertical navigation requirements, but not below MSA.
- Track via the latest STAR clearance to the nominated runway, then fly the most suitable approach in accordance with ERSa EMERG Section 1.5.

Changes: REVISED PROCEDURE.

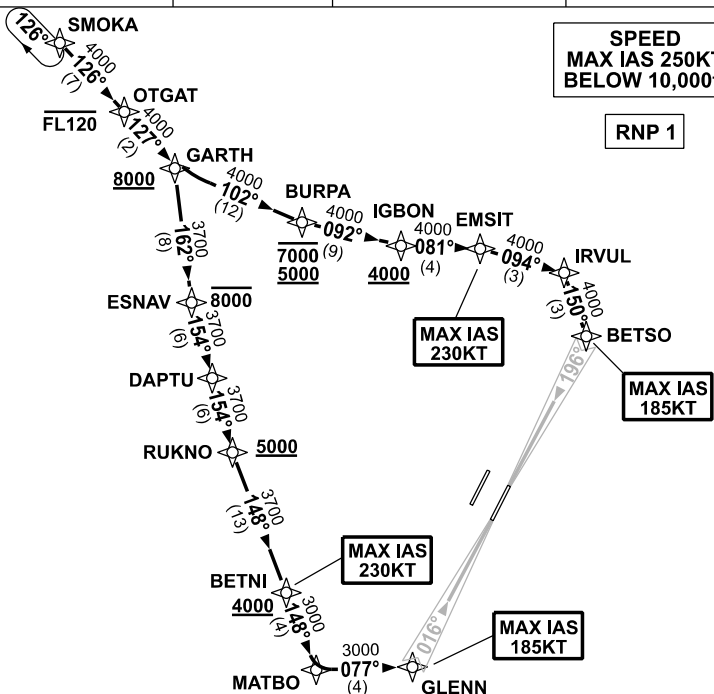
BBSNR40-SUP

**APPENDIX 16  
TO SUP H50/26**

**STANDARD INSTRUMENT ARRIVAL (STAR)  
SMOKA TWO ALPHA ARRIVAL (RNAV) RWY 01R/19L  
BRISBANE, QLD (YBBN)**

|                     |  |                                       |                                  |  |
|---------------------|--|---------------------------------------|----------------------------------|--|
| ATIS<br>113.2 125.5 | APP<br>NORTH 124.7 SOUTH 125.6 FINALS 119.25 | TWR<br>01R/19L 120.5<br>01L/19R 118.0 | SMC<br>DOM 121.7<br>SOUTH 122.25 | Bearings are Magnetic<br>Elevations in FEET AMSL |
|---------------------|--|---------------------------------------|----------------------------------|--|

NOT TO SCALE



10 NM MSA 2600

**SMOKA TWO ALPHA ARRIVAL**

**RWY 01R:**

- From SMOKA track 126° to OTGAT  
**Cross** OTGAT AT or BLW FL120
- Track 127° to GARTH  
**Cross** GARTH AT or ABV 8000ft
- Turn RIGHT track 162° to ESNAP  
**Cross** ESNAP AT or BLW 8000ft
- Turn LEFT track 154° to DAPTU
- Track 154° to RUKNO  
**Cross** RUKNO AT or ABV 5000ft
- Turn LEFT track 148° to BETNI  
**Cross** BETNI AT or ABV 4000ft  
MAX IAS 230KT AT BETNI
- Track 148° to MATBO
- Turn LEFT track 077° to GLENN for ILS,  
RNP Z, LOC or RNP T RWY 01R approach  
MAX IAS 185KT AT GLENN

**RWY 19L:**

- From SMOKA track 126° to OTGAT  
**Cross** OTGAT AT or BLW FL120
- Track 127° to GARTH  
**Cross** GARTH AT or ABV 8000ft
- Turn LEFT track 102° to BURPA  
**Cross** BURPA BTN 5000ft and 7000ft
- Turn LEFT track 092° to IGBON  
**Cross** IGBON AT or ABV 4000ft
- Turn LEFT track 081° to EMSIT  
MAX IAS 230KT AT EMSIT
- Turn RIGHT track 094° to IRVUL
- Turn RIGHT track 150° to BETSO for ILS,  
RNP Z, LOC or RNP T RWY 19L approach  
MAX IAS 185KT AT BETSO

**COMMUNICATIONS FAILURE: PROCEDURE IN IMC  
IF ABLE CTC BN ATC ON TEL: (07) 3866-3694**

- Squawk 7600, comply with vertical navigation requirements, but not below MSA.
- Track via the latest STAR clearance to the nominated runway, then fly the most suitable approach in accordance with ERSA EMERG Section 1.5.

Changes: VALIDITY INDICATOR.

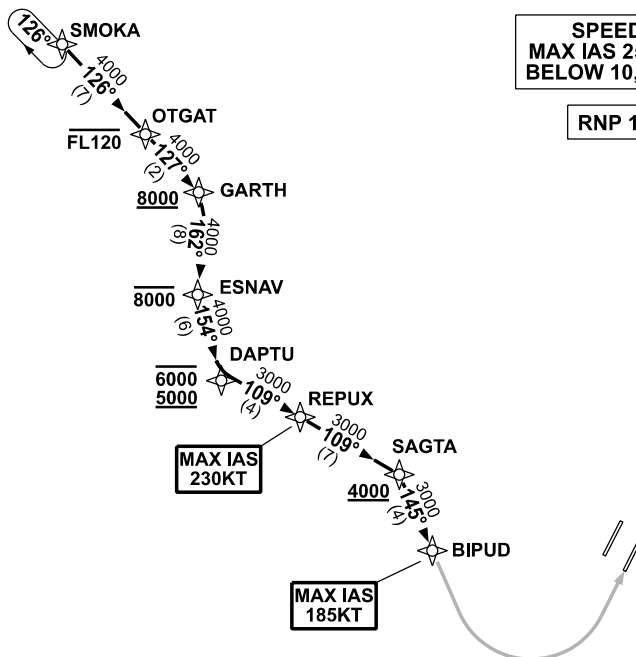
BBNSR41-SUP

**APPENDIX 17  
TO SUP H50/26**

**STANDARD INSTRUMENT ARRIVAL (STAR)  
SMOKA TWO MIKE ARRIVAL (RNAV) RWY 01R  
BRISBANE, QLD (YBBN)**

|                     |  |                                       |                                  |  |
|---------------------|--|---------------------------------------|----------------------------------|--|
| ATIS<br>113.2 125.5 | APP<br>NORTH 124.7<br>SOUTH 125.6<br>FINALS 119.25 | TWR<br>01R/19L 120.5<br>01L/19R 118.0 | SMC<br>DOM 121.7<br>SOUTH 122.25 | Bearings are Magnetic<br>Elevations in FEET AMSL |
|---------------------|--|---------------------------------------|----------------------------------|--|

NOT TO SCALE

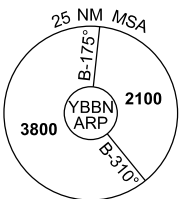


**SPEED  
MAX IAS 250KT  
BELOW 10,000ft**

**RNP 1**

**MAX IAS  
230KT**

**MAX IAS  
185KT**



10 NM MSA 2600

**SMOKA TWO MIKE ARRIVAL**

**RWY 01R:**

- From SMOKA track 126° to OTGAT  
**Cross** OTGAT AT or BLW FL120
- Track 127° to GARTH  
**Cross** GARTH AT or ABV 8000ft
- Turn RIGHT track 162° to ESNV  
**Cross** ESNV AT or BLW 8000ft
- Turn LEFT track 154° to DAPTU  
**Cross** DAPTU BTN 5000ft and 6000ft
- Turn LEFT track 109° to REPUX  
MAX IAS 230KT AT REPUX
- Track 109° to SAGTA  
**Cross** SAGTA AT or ABV 4000ft
- Turn RIGHT track 145° to BIPUD for  
RNP M or RNP R RWY 01R (AR) approach  
MAX IAS 185KT AT BIPUD

**COMMUNICATIONS FAILURE: PROCEDURE IN IMC  
IF ABLE CTC BN ATC ON TEL: (07) 3866-3694**

- Squawk 7600, comply with vertical navigation requirements, but not below MSA.
- Track via the latest STAR clearance to the nominated runway, then fly the most suitable approach in accordance with ERSA EMERG Section 1.5.

Changes: VALIDITY INDICATOR.

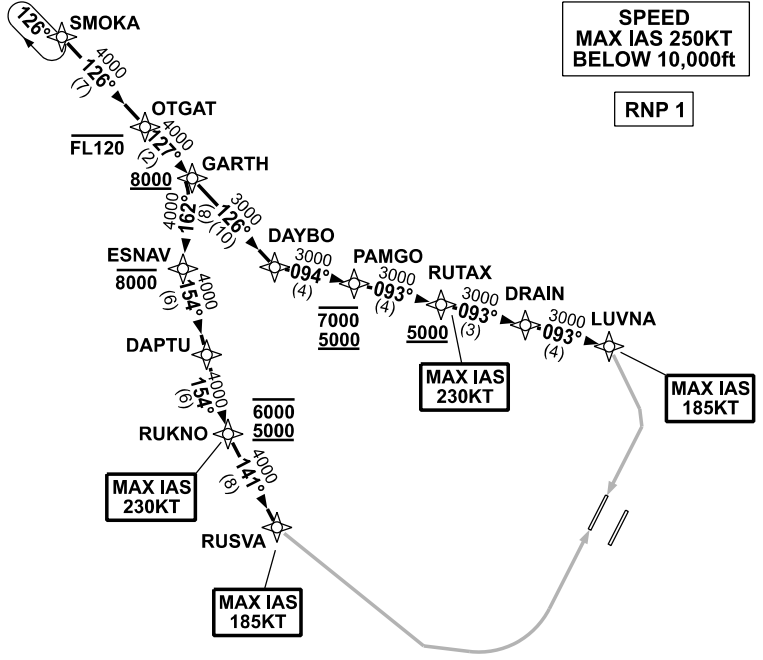
BBNSR42-SUP

**APPENDIX 18  
TO SUP H50/26**

**STANDARD INSTRUMENT ARRIVAL (STAR)  
SMOKA TWO X-RAY ARRIVAL (RNAV) RWY 01L/19R  
BRISBANE, QLD (YBBN)**

|                     |  |                                       |                                  |  |
|---------------------|--|---------------------------------------|----------------------------------|--|
| ATIS<br>113.2 125.5 | APP<br>NORTH 124.7 SOUTH 125.6 FINALS 119.25 | TWR<br>01L/19R 118.0<br>01R/19L 120.5 | SMC<br>DOM 121.7<br>SOUTH 122.25 | Bearings are Magnetic<br>Elevations in FEET AMSL |
|---------------------|--|---------------------------------------|----------------------------------|--|

NOT TO SCALE



10 NM MSA 2600

**SMOKA TWO XRAY ARRIVAL**

**RWY 01L:**

- From SMOKA track 126° to OTGAT  
**Cross** OTGAT AT or BLW FL120
- Track 127° to GARTH  
**Cross** GARTH AT or ABV 8000ft
- Turn **RIGHT** track 162° to ESNAV  
**Cross** ESNAV AT or BLW 8000ft
- Turn **LEFT** track 154° to DAPTU
- Track 154° to RUKNO  
**Cross** RUKNO BTN 5000ft and 6000ft  
MAX IAS 230KT AT RUKNO
- Turn **LEFT** track 141° to RUSVA  
for RNP X RWY 01L (AR) approach  
MAX IAS 185KT AT RUSVA

**RWY 19R:**

- From SMOKA track 126° to OTGAT  
**Cross** OTGAT AT or BLW FL120
- Track 127° to GARTH  
**Cross** GARTH AT or ABV 8000ft
- Track 126° to DAYBO
- Turn **LEFT** track 094° to PAMGO  
**Cross** PAMGO BTN 5000ft and 7000ft
- Turn **LEFT** track 093° to RUTAX  
**Cross** RUTAX AT or ABV 5000ft  
MAX IAS 230KT AT RUTAX
- Track 093° to DRAIN
- Track 093° to LUVNA  
for RNP X RWY 19R (AR) approach  
MAX IAS 185KT AT LUVNA

**COMMUNICATIONS FAILURE: PROCEDURE IN IMC  
IF ABLE CTC BN ATC ON TEL: (07) 3866-3694**

- Squawk 7600, comply with vertical navigation requirements, but not below MSA.
- Track via the latest STAR clearance to the nominated runway, then fly the most suitable approach in accordance with ERSA EMERG Section 1.5.

Changes: VALIDITY INDICATOR.

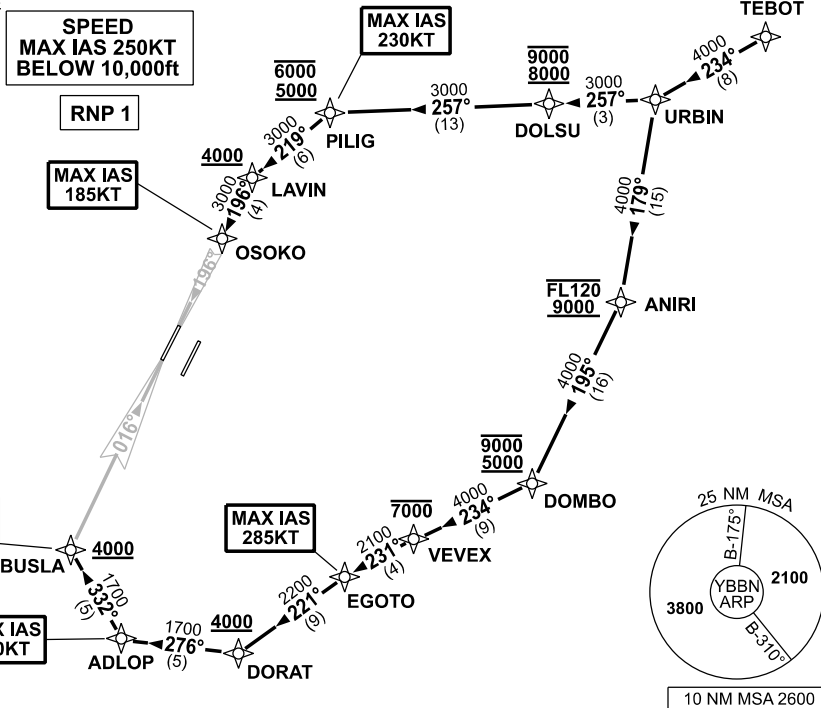
BBNSR54-SUP

**APPENDIX 19  
TO SUP H50/26**

**STANDARD INSTRUMENT ARRIVAL (STAR)  
TEBOT THREE ALPHA ARRIVAL (RNAV) RWY 01L/19R  
BRISBANE, QLD (YBBN)**

|                     |  |                                       |                                  |  |
|---------------------|--|---------------------------------------|----------------------------------|--|
| ATIS<br>113.2 125.5 | APP<br>NORTH 124.7<br>SOUTH 125.6<br>FINALS 119.25 | TWR<br>01L/19R 118.0<br>01R/19L 120.5 | SMC<br>DOM 121.7<br>SOUTH 122.25 | Bearings are Magnetic<br>Elevations in FEET AMSL |
|---------------------|--|---------------------------------------|----------------------------------|--|

NOT TO SCALE



**TEBOT THREE ALPHA ARRIVAL  
RWY 01L:**

- From TEBOT track 234° to URBIN
- Turn LEFT track 179° to ANIRI  
    **Cross** ANIRI BTN 9000ft AND FL120
- Turn RIGHT track 195° to DOMBO  
    **Cross** DOMBO BTN 5000ft and 9000ft
- Turn RIGHT track 234° to VEVEX  
    **Cross** VEVEX AT or BLW 7000ft
- Turn LEFT track 231° to EGOTO  
    MAX IAS 285KT AT EGOTO
- Turn LEFT track 221° to DORAT  
    **Cross** DORAT AT or ABV 4000ft
- Turn RIGHT track 276° to ADLOP  
    MAX IAS 230KT AT ADLOP
- Turn RIGHT track 332° to BUSLA  
    for ILS, RNP Z or LOC RWY 01L approach  
    **Cross** BUSLA AT or ABV 4000ft  
    MAX IAS 185KT AT BUSLA

**RWY 19R:**

- From TEBOT track 234° to URBIN
- Turn RIGHT track 257° to DOLSU  
    **Cross** DOLSU BTN 8000ft and 9000ft
- Track 257° to PILIG  
    **Cross** PILIG BTN 5000ft and 6000ft  
    MAX IAS 230KT AT PILIG
- Turn LEFT track 219° to LAVIN  
    **Cross** LAVIN AT or ABV 4000ft
- Turn LEFT track 196° to OSOKO  
    for ILS, RNP Z or LOC RWY 19R approach  
    MAX IAS 185KT AT OSOKO

**COMMUNICATIONS FAILURE: PROCEDURE IN IMC  
IF ABLE CTC BN ATC ON TEL: (07) 3866-3694**

- Squawk 7600, comply with vertical navigation requirements, but not below MSA.
- Track via the latest STAR clearance to the nominated runway, then fly the most suitable approach in accordance with ERSA EMERG Section 1.5.

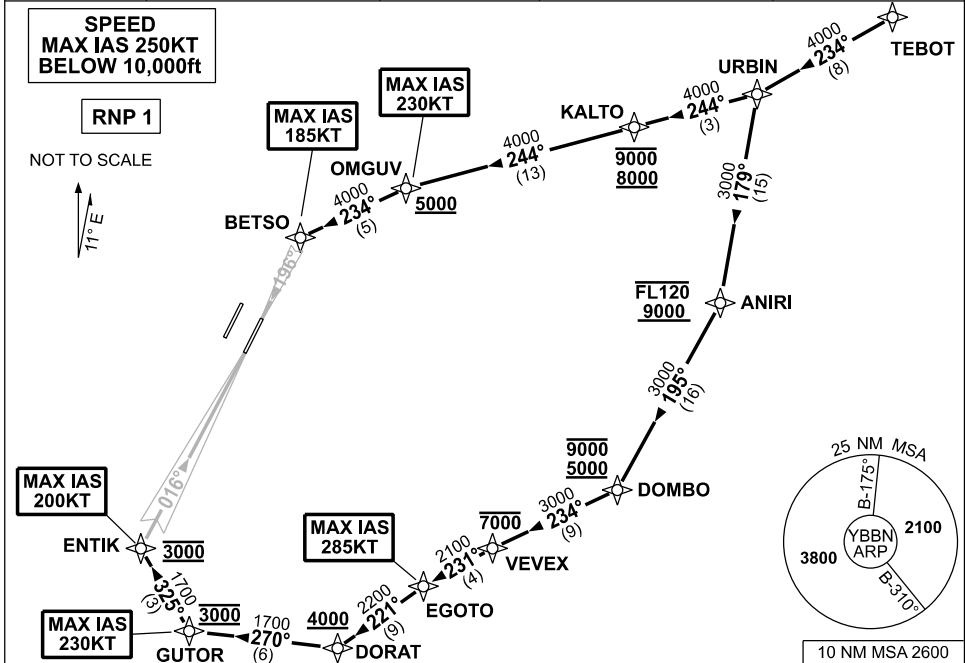
Changes: REVISED PROCEDURE.

BBNSR29-SUP

**APPENDIX 20  
TO SUP H50/26**

**STANDARD INSTRUMENT ARRIVAL (STAR)  
TEBOT THREE ALPHA ARRIVAL (RNAV) RWY 01R/19L  
BRISBANE, QLD (YBBN)**

|                     |  |                                       |                                  |  |
|---------------------|--|---------------------------------------|----------------------------------|--|
| ATIS<br>113.2 125.5 | APP<br>NORTH 124.7<br>SOUTH 125.6<br>FINALS 119.25 | TWR<br>01R/19L 120.5<br>01L/19R 118.0 | SMC<br>DOM 121.7<br>SOUTH 122.25 | Bearings are Magnetic<br>Elevations in FEET AMSL |
|---------------------|--|---------------------------------------|----------------------------------|--|



**TEBOT THREE ALPHA ARRIVAL  
RWY 01R:**

- From TEBOT track 234° to URBIN.
- Turn LEFT track 179° to ANIRI  
**Cross** ANIRI BTN 9000ft and FL120
- Turn RIGHT track 195° to DOMBO  
**Cross** DOMBO BTN 5000ft AND 9000ft
- Turn RIGHT track 234° to VEVEX  
**Cross** VEVEX AT or BLW 7000ft
- Turn LEFT track 231° to EGOTO  
MAX IAS 285KT AT EGOTO
- Turn LEFT track 221° to DORAT  
**Cross** DORAT AT or ABV 4000ft
- Turn RIGHT track 270° to GUTOR  
**Cross** GUTOR AT 3000ft  
MAX IAS 230KT AT GUTOR
- Turn RIGHT track 325° to ENTIK  
for ILS, RNP Z, LOC or RNP T RWY 01R  
approach  
**Cross** ENTIK AT 3000ft  
MAX IAS 200KT AT ENTIK

**RWY 19L:**

- From TEBOT track 234° to URBIN.
- Turn RIGHT track 244° to KALTO  
**Cross** KALTO BTN 8000ft and 9000ft
- Track 244° to OMGUV  
**Cross** OMGUV AT or ABV 5000ft  
MAX IAS 230KT AT OMGUV
- Turn LEFT track 234° to BETSO  
for ILS, RNP Z, LOC or RNP T RWY 19L  
approach  
MAX IAS 185KT AT BETSO

**COMMUNICATIONS FAILURE: PROCEDURE IN IMC  
IF ABLE CTC BN ATC ON TEL: (07) 3866-3694**

- Squawk 7600, comply with vertical navigation requirements, but not below MSA.
- Track via the latest STAR clearance to the nominated runway, then fly the most suitable approach in accordance with ERSA EMERG Section 1.5.

Changes: REVISED PROCEDURE.

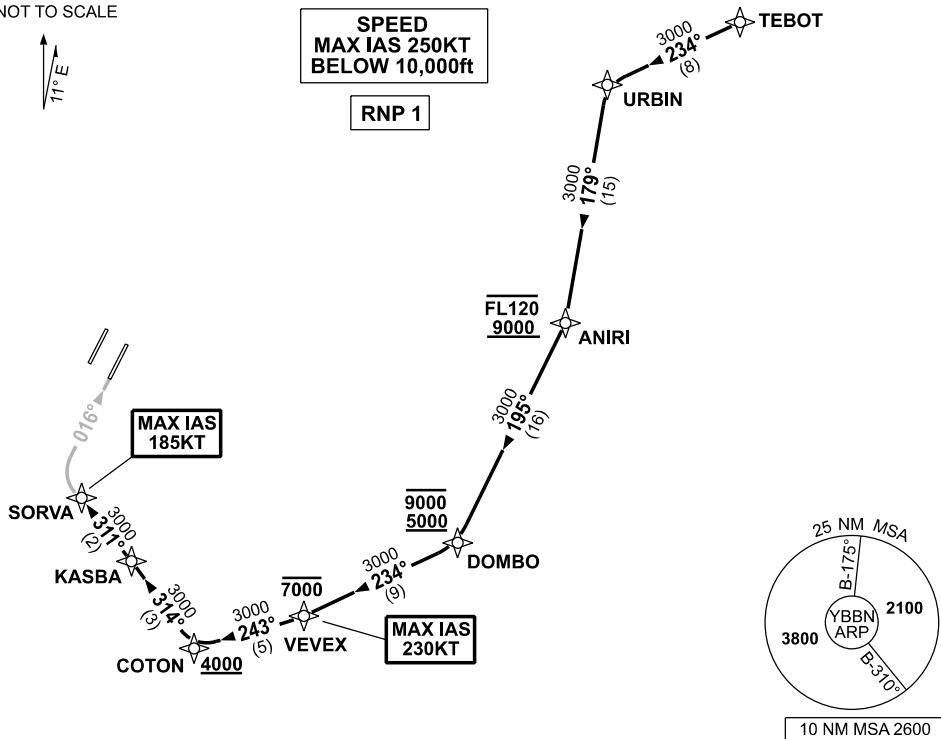
BBNSR28-SUP

**APPENDIX 21  
TO SUP H50/26**

**STANDARD INSTRUMENT ARRIVAL (STAR)  
TEBOT THREE X-RAY ARRIVAL (RNAV) RWY 01R  
BRISBANE, QLD (YBBN)**

|                     |  |                                       |                                  |  |
|---------------------|--|---------------------------------------|----------------------------------|--|
| ATIS<br>113.2 125.5 | APP<br>NORTH 124.7<br>SOUTH 125.6<br>FINALS 119.25 | TWR<br>01R/19L 120.5<br>01L/19R 118.0 | SMC<br>DOM 121.7<br>SOUTH 122.25 | Bearings are Magnetic<br>Elevations in FEET AMSL |
|---------------------|--|---------------------------------------|----------------------------------|--|

NOT TO SCALE



**TEBOT THREE X-RAY ARRIVAL**

**RWY 01R:**

- From TEBOT track 234° to URBIN
- Turn LEFT track 179° to ANIRI  
**Cross** ANIRI BTN 9000ft and FL120
- Turn RIGHT track 195° to DOMBO  
**Cross** DOMBO BTN 5000ft AND 9000ft
- Turn RIGHT track 234° to VEVEX  
**Cross** VEVEX AT or BLW 7000ft  
MAX IAS 230KT AT VEVEX
- Turn RIGHT track 243° to COTON  
**Cross** COTON AT or ABV 4000ft
- Turn RIGHT track 314° to KASBA
- Turn LEFT track 311° to SORVA  
for RNP X or RNP S RWY 01R (AR) approach  
MAX IAS 185KT AT SORVA

**COMMUNICATIONS FAILURE: PROCEDURE IN IMC  
IF ABLE CTC BN ATC ON TEL: (07) 3866-3694**

- Squawk 7600, comply with vertical navigation requirements, but not below MSA.
- Track via the latest STAR clearance to the nominated runway, then fly the most suitable approach in accordance with ERSA EMERG Section 1.5.

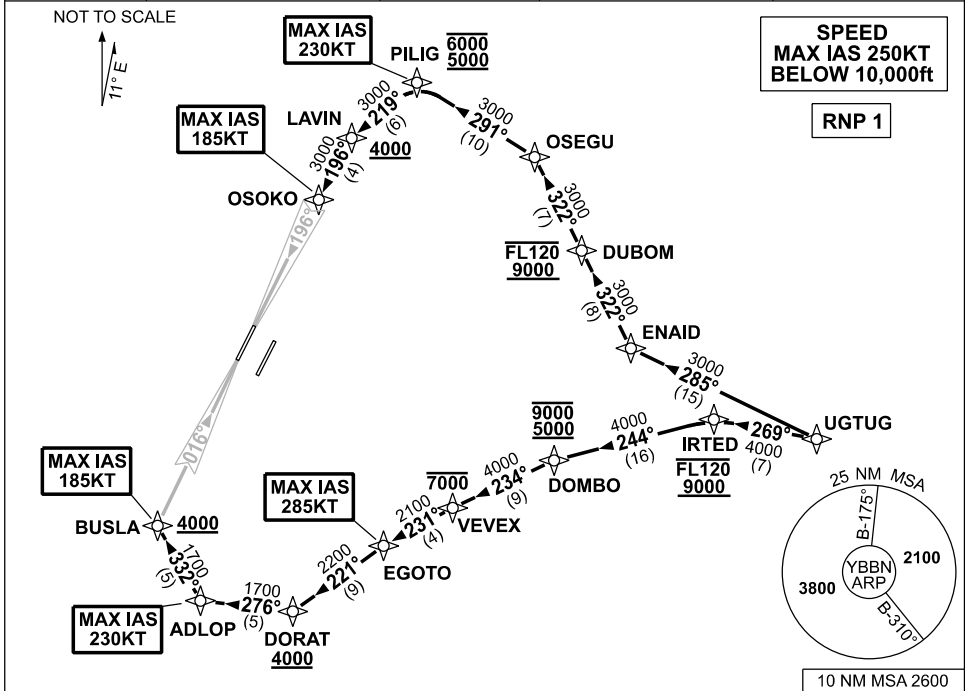
Changes: VALIDITY INDICATOR.

BBNSR30-SUP

**APPENDIX 22  
TO SUP H50/26**

**STANDARD INSTRUMENT ARRIVAL (STAR)  
UGTUG THREE ALPHA ARRIVAL (RNAV) RWY 01L/19R  
BRISBANE, QLD (YBBN)**

|                     |  |                                       |                                  |  |
|---------------------|--|---------------------------------------|----------------------------------|--|
| ATIS<br>113.2 125.5 | APP<br>NORTH 124.7 SOUTH 125.6 FINALS 119.25 | TWR<br>01L/19R 118.0<br>01R/19L 120.5 | SMC<br>DOM 121.7<br>SOUTH 122.25 | Bearings are Magnetic<br>Elevations in FEET AMSL |
|---------------------|--|---------------------------------------|----------------------------------|--|



**UGTUG THREE ALPHA ARRIVAL**

**RWY 01L:**

- From UGTUG track 269° to IRTED  
**Cross** IRTED BTN 9000ft and FL120
- Turn LEFT track 244° to DOMBO  
**Cross** DOMBO BTN 5000ft and 9000ft
- Turn LEFT track 234° to VEVEX  
**Cross** VEVEX AT or BLW 7000ft
- Turn LEFT track 231° to EGOTO  
MAX IAS 285KT AT EGOTO
- Turn LEFT track 221° to DORAT  
**Cross** DORAT AT or ABV 4000ft
- Turn RIGHT track 276° to ADLOP  
MAX IAS 230KT AT ADLOP
- Turn RIGHT track 332° to BUSLA  
for ILS, RNP Z or LOC RWY 01L approach  
**Cross** BUSLA AT or ABV 4000ft  
MAX IAS 185KT AT BUSLA

**RWY 19R:**

- From UGTUG track 285° to ENAID
- Turn RIGHT track 322° to DUBOM  
**Cross** DUBOM BTN 9000ft and FL120
- Track 322° to OSEGU
- Turn LEFT track 291° to PILIG  
**Cross** PILIG BTN 5000ft and 6000ft  
MAX IAS 230KT AT PILIG
- Turn LEFT track 219° to LAVIN  
**Cross** LAVIN AT or ABV 4000ft
- Turn LEFT track 196° to OSOKO  
for ILS, RNP Z or LOC RWY 19R approach  
MAX IAS 185KT AT OSOKO

**COMMUNICATIONS FAILURE: PROCEDURE IN IMC  
IF ABLE CTC BN ATC ON TEL: (07) 3866-3694**

- Squawk 7600, comply with vertical navigation requirements, but not below MSA.
- Track via the latest STAR clearance to the nominated runway, then fly the most suitable approach in accordance with ERSA EMERG Section 1.5.

Changes: REVISED PROCEDURES.

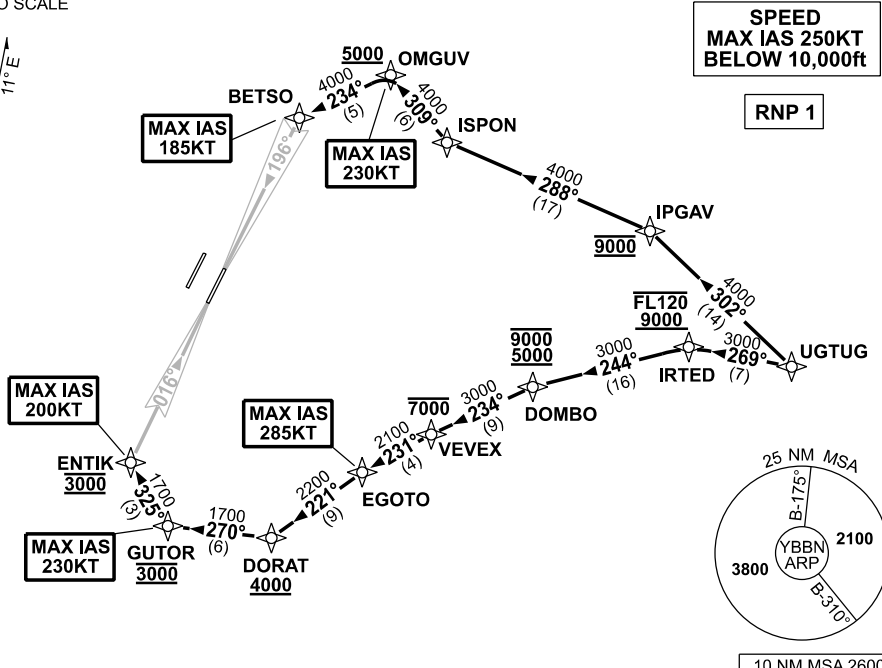
BBNSR44-SUP

**APPENDIX 23  
TO SUP H50/26**

**STANDARD INSTRUMENT ARRIVAL (STAR)  
UGTUG THREE ALPHA ARRIVAL (RNAV) RWY 01R/19L  
BRISBANE, QLD (YBBN)**

|                     |  |                                       |                                  |  |
|---------------------|--|---------------------------------------|----------------------------------|--|
| ATIS<br>113.2 125.5 | APP<br>NORTH 124.7<br>SOUTH 125.6<br>FINALS 119.25 | TWR<br>01R/19L 120.5<br>01L/19R 118.0 | SMC<br>DOM 121.7<br>SOUTH 122.25 | Bearings are Magnetic<br>Elevations in FEET AMSL |
|---------------------|--|---------------------------------------|----------------------------------|--|

NOT TO SCALE



10 NM MSA 2600

**UGTUG THREE ALPHA ARRIVAL  
RWY 01R:**

- From UGTUG track 269° to IRTED  
**Cross** IRTED BTN 9000ft and FL120
- Turn LEFT track 244° to DOMBO  
**Cross** DOMBO BTN 5000ft and 9000ft
- Turn LEFT track 234° to VEVEX  
**Cross** VEVEX AT or BLW 7000ft
- Turn LEFT track 231° to EGOTO  
MAX IAS 285KT AT EGOTO
- Turn LEFT track 221° to DORAT  
**Cross** DORAT AT or ABV 4000ft
- Turn RIGHT track 270° to GUTOR  
**Cross** GUTOR AT 3000ft  
MAX IAS 230KT AT GUTOR
- Turn RIGHT track 325° to ENTIK  
for ILS, RNP Z, LOC or RNP T RWY 01R  
approach  
**Cross** ENTIK AT 3000ft  
MAX IAS 200KT AT ENTIK

**RWY 19L:**

- From UGTUG track 302° to IPGAV  
**Cross** IPGAV AT 9000ft
- Turn LEFT track 288° to ISPON
- Turn RIGHT track 309° to OMGUV  
**Cross** OMGUV AT or ABV 5000ft  
MAX IAS 230KT AT OMGUV
- Turn LEFT track 234° to BETSO  
for ILS, RNP Z, LOC or RNP T RWY 19L  
approach  
MAX IAS 185KT AT BETSO

**COMMUNICATIONS FAILURE: PROCEDURE IN IMC  
IF ABLE CTC BN ATC ON TEL: (07) 3866-3694**

- Squawk 7600, comply with vertical navigation requirements, but not below MSA.
- Track via the latest STAR clearance to the nominated runway, then fly the most suitable approach in accordance with ERSA EMERG Section 1.5.

Changes: REVISED PROCEDURE.

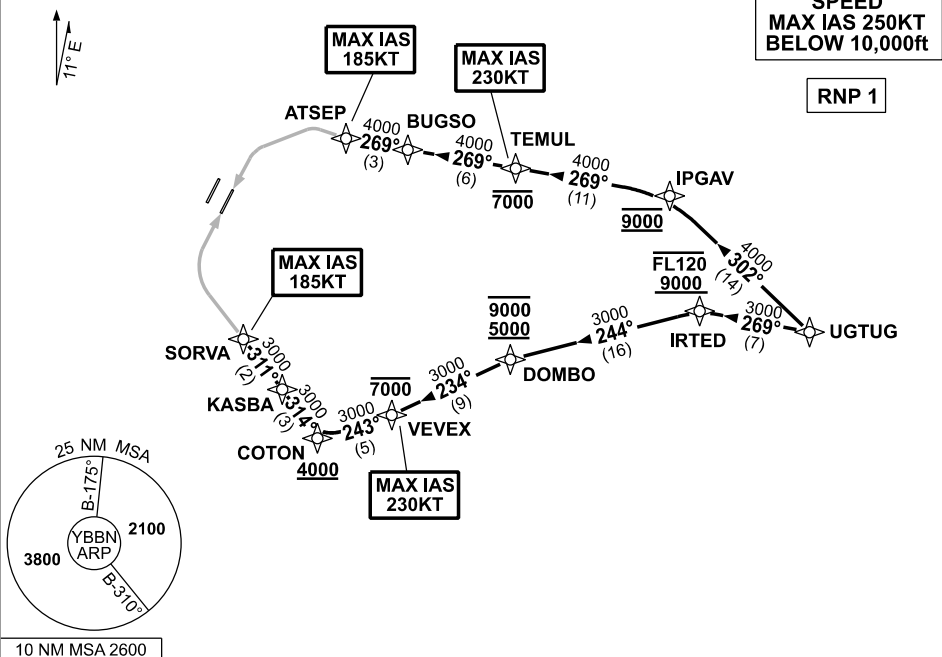
BBNSR43-SUP

**APPENDIX 24  
TO SUP H50/26**

**STANDARD INSTRUMENT ARRIVAL (STAR)  
UGTUG THREE X-RAY ARRIVAL (RNAV) RWY 01R/19L  
BRISBANE, QLD (YBBN)**

|                     |  |                                       |                                  |  |
|---------------------|--|---------------------------------------|----------------------------------|--|
| ATIS<br>113.2 125.5 | APP<br>NORTH 124.7<br>SOUTH 125.6<br>FINALS 119.25 | TWR<br>01R/19L 120.5<br>01L/19R 118.0 | SMC<br>DOM 121.7<br>SOUTH 122.25 | Bearings are Magnetic<br>Elevations in FEET AMSL |
|---------------------|--|---------------------------------------|----------------------------------|--|

NOT TO SCALE



**UGTUG THREE X-RAY ARRIVAL**

**RWY 01R:**

- From UGTUG track 269° to IRTED  
**Cross** IRTED BTN 9000ft and FL120
- Turn LEFT track 244° to DOMBO  
**Cross** DOMBO BTN 5000ft and 9000ft
- Turn LEFT track 234° to VEVEX  
**Cross** VEVEX AT or BLW 7000ft  
MAX IAS 230KT AT VEVEX
- Turn RIGHT track 243° to COTON  
**Cross** COTON AT or ABV 4000ft
- Turn RIGHT track 314° to KASBA
- Turn LEFT track 311° to SORVA  
for RNP X or RNP S RWY 01R (AR) approach  
MAX IAS 185KT AT SORVA

**RWY 19L:**

- From UGTUG track 302° to IPGAV  
**Cross** IPGAV AT 9000ft
- Turn LEFT track 269° to TEMUL  
**Cross** TEMUL AT or BLW 7000ft  
MAX IAS 230KT AT TEMUL
- Track 269° to BUGSO
- Track 269° to ATSEP  
for RNP X or RNP S RWY 19L (AR) approach  
MAX IAS 185KT AT ATSEP

**COMMUNICATIONS FAILURE: PROCEDURE IN IMC  
IF ABLE CTC BN ATC ON TEL: (07) 3866-3694**

- Squawk 7600, comply with vertical navigation requirements, but not below MSA.
- Track via the latest STAR clearance to the nominated runway, then fly the most suitable approach in accordance with ERSA EMERG Section 1.5.

Changes: VALIDITY INDICATOR.

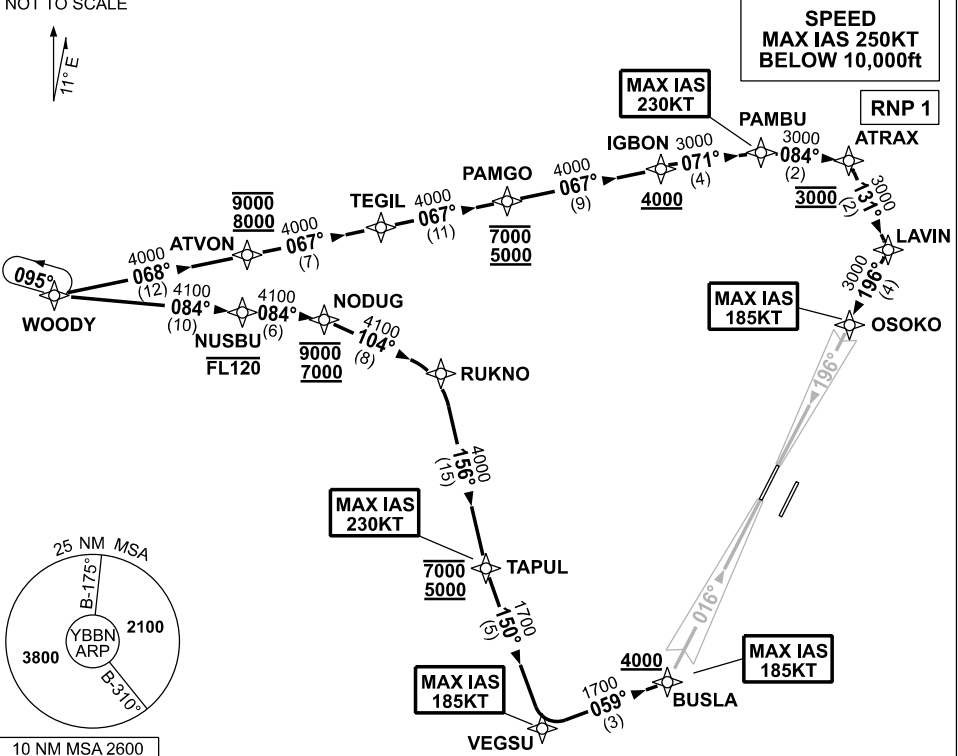
BBNSR45-SUP

**APPENDIX 25  
TO SUP H50/26**

**STANDARD INSTRUMENT ARRIVAL (STAR)  
WOODY THREE ALPHA ARRIVAL (RNAV) RWY 01L/19R  
BRISBANE, QLD (YBBN)**

|                     |  |                                       |                                  |  |
|---------------------|--|---------------------------------------|----------------------------------|--|
| ATIS<br>113.2 125.5 | APP<br>NORTH 124.7<br>SOUTH 125.6<br>FINALS 119.25 | TWR<br>01L/19R 118.0<br>01R/19L 120.5 | SMC<br>DOM 121.7<br>SOUTH 122.25 | Bearings are Magnetic<br>Elevations in FEET AMSL |
|---------------------|--|---------------------------------------|----------------------------------|--|

NOT TO SCALE



- WOODY THREE ALPHA ARRIVAL  
RWY 01L:**
- From WOODY track 084° to NUSBU  
**Cross** NUSBU AT or BLW FL120
  - Track 084° to NODUG  
**Cross** NODUG BTN 7000ft and 9000ft
  - Turn RIGHT track 104° to RUKNO
  - Turn RIGHT track 156° to TAPUL  
**Cross** TAPUL BTN 5000ft and 7000ft  
MAX IAS 230KT AT TAPUL
  - Turn LEFT track 150° to VEGSU  
MAX IAS 185KT AT VEGSU
  - Turn LEFT track 059° to BUSLA  
for ILS, RNP Z or LOC RWY 01L approach  
**Cross** BUSLA AT or ABV 4000ft  
MAX IAS 185KT AT BUSLA

- RWY 19R:**
- From WOODY track 068° to ATVON  
**Cross** ATVON BTN 8000ft and 9000ft
  - Track 067° to TEGIL
  - Track 067° to PAMGO  
**Cross** PAMGO BTN 5000ft and 7000ft
  - Track 067° to IGBON  
**Cross** IGBON AT or ABV 4000ft
  - Turn RIGHT track 071° to PAMBU  
MAX IAS 230KT AT PAMBU
  - Turn RIGHT track 084° to ATRAX  
**Cross** ATRAX AT 3000ft
  - Turn RIGHT track 131° to LAVIN
  - Turn RIGHT track 196° to OSOKO  
for ILS, RNP Z or LOC RWY 19R approach  
MAX IAS 185KT AT OSOKO

**COMMUNICATIONS FAILURE: PROCEDURE IN IMC  
IF ABLE CTC BN ATC ON TEL: (07) 3866-3694**

- Squawk 7600, comply with vertical navigation requirements, but not below MSA.
- Track via the latest STAR clearance to the nominated runway, then fly the most suitable approach in accordance with ERSA EMERG Section 1.5.

Changes: REVISED PROCEDURE.

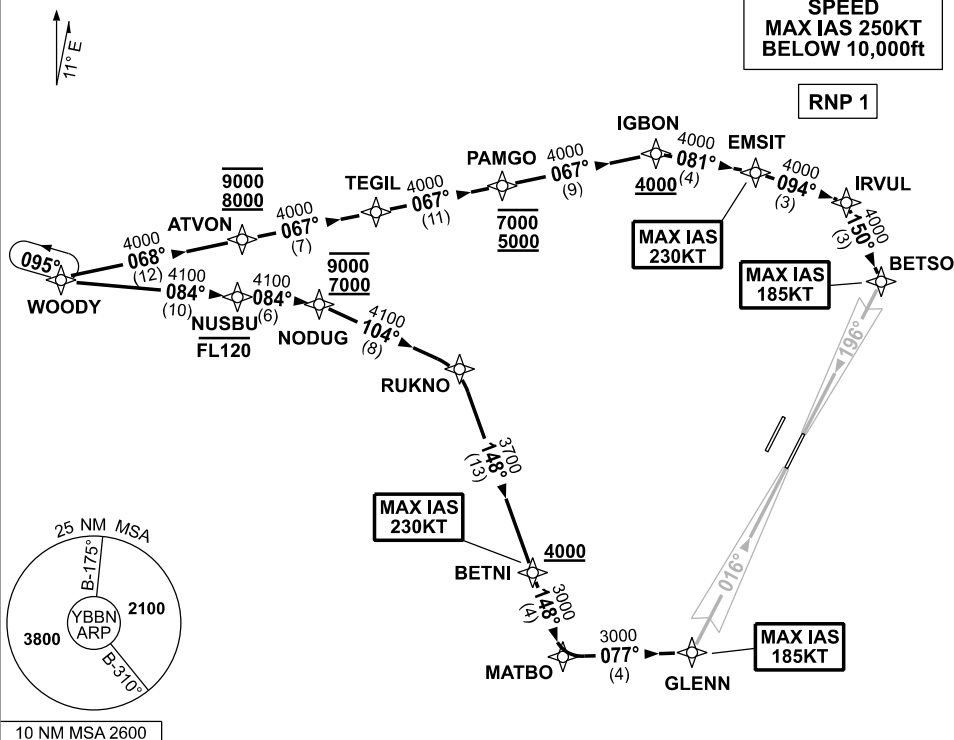
BBNSR31-SUP

**APPENDIX 26  
TO SUP H50/26**

**STANDARD INSTRUMENT ARRIVAL (STAR)  
WOODY THREE ALPHA ARRIVAL (RNAV) RWY 01R/19L  
BRISBANE, QLD (YBBN)**

|                     |  |                                       |                               |  |
|---------------------|--|---------------------------------------|-------------------------------|--|
| ATIS<br>113.2 125.5 | APP<br>NORTH 124.7 SOUTH 125.6 FINALS 119.25 | TWR<br>01R/19L 120.5<br>01L/19R 118.0 | SMC<br>DOM 121.7 SOUTH 122.25 | Bearings are Magnetic<br>Elevations in FEET AMSL |
|---------------------|--|---------------------------------------|-------------------------------|--|

NOT TO SCALE



**WOODY THREE ALPHA ARRIVAL**

**RWY 01R:**

- From WOODY track 084° to NUSBU  
**Cross** NUSBU AT or BLW FL120
- Track 084° to NODUG  
**Cross** NODUG BTN 7000ft and 9000ft
- Turn RIGHT track 104° to RUKNO
- Turn RIGHT track 148° to BETNI  
**Cross** BETNI AT or ABV 4000ft  
MAX IAS 230KT AT BETNI
- Track 148° to MATBO
- Turn LEFT track 077° to GLENN for ILS,  
RNP Z, LOC or RNP T RWY 01R approach  
MAX IAS 185KT AT GLENN

**RWY 19L:**

- From WOODY track 068° to ATVON  
**Cross** ATVON BTN 8000ft and 9000ft
- Track 067° to TEGIL
- Track 067° to PAMGO  
**Cross** PAMGO BTN 5000ft and 7000ft
- Track 067° to IGBON  
**Cross** IGBON AT or ABV 4000ft
- Turn RIGHT track 081° to EMSIT  
MAX IAS 230KT AT EMSIT
- Turn RIGHT track 094° to IRVUL
- Turn RIGHT track 150° to BETSO for ILS,  
RNP Z, LOC or RNP T RWY 19L approach  
MAX IAS 185KT AT BETSO

**COMMUNICATIONS FAILURE: PROCEDURE IN IMC  
IF ABLE CTC BN ATC ON TEL: (07) 3866-3694**

- Squawk 7600, comply with vertical navigation requirements, but not below MSA.
- Track via the latest STAR clearance to the nominated runway, then fly the most suitable approach in accordance with ERSA EMERG Section 1.5.

Changes: VALIDITY INDICATOR.

BBNSR32-SUP

**APPENDIX 27  
TO SUP H50/26**

**STANDARD INSTRUMENT ARRIVAL (STAR)  
WOODY THREE VICTOR ARRIVAL (RNAV) RWY 01L/19R  
BRISBANE, QLD (YBBN)**

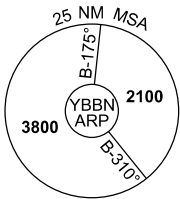
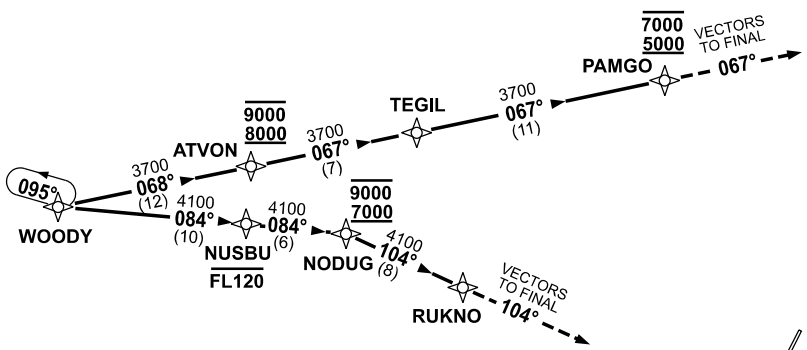
|                     |  |                                       |                                  |  |
|---------------------|--|---------------------------------------|----------------------------------|--|
| ATIS<br>113.2 125.5 | APP<br>NORTH 124.7<br>SOUTH 125.6<br>FINALS 119.25 | TWR<br>01L/19R 118.0<br>01R/19L 120.5 | SMC<br>DOM 121.7<br>SOUTH 122.25 | Bearings are Magnetic<br>Elevations in FEET AMSL |
|---------------------|--|---------------------------------------|----------------------------------|--|

NOT TO SCALE



**SPEED  
MAX IAS 250KT  
BELOW 10,000ft**

**RNP 1**



10 NM MSA 2600

**WOODY THREE VICTOR ARRIVAL**

**RWY 01L:**

- From WOODY track 084° to NUSBU  
**Cross** NUSBU AT or BLW FL120
- Track 084° to NODUG  
**Cross** NODUG BTN 7000ft and 9000ft
- Turn RIGHT track 104° to RUKNO
- Track 104°, EXPECT radar vectors to final

**RWY 19R:**

- From WOODY track 068° to ATVON  
**Cross** ATVON BTN 8000ft and 9000ft
- Track 067° to TEGIL
- Track 067° to PAMGO  
**Cross** PAMGO BTN 5000ft and 7000ft
- Track 067°, EXPECT radar vectors to final

**COMMUNICATIONS FAILURE: PROCEDURE IN IMC  
IF ABLE CTC BN ATC ON TEL: (07) 3866-3694**

- Squawk 7600, comply with vertical navigation requirements, but not below MSA.
- Track via the latest STAR clearance to the nominated runway, then fly the most suitable approach in accordance with ERSA EMERG Section 1.5.

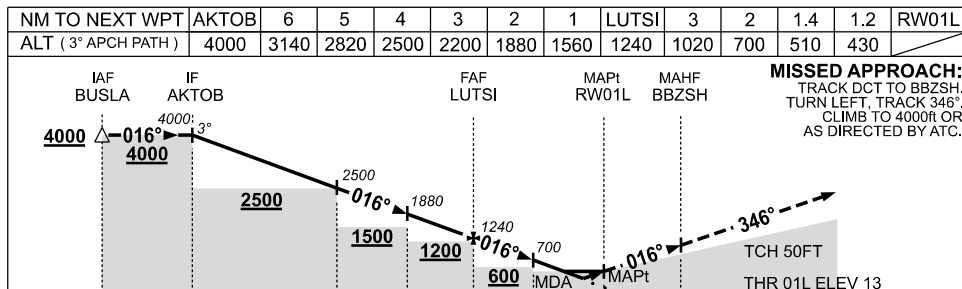
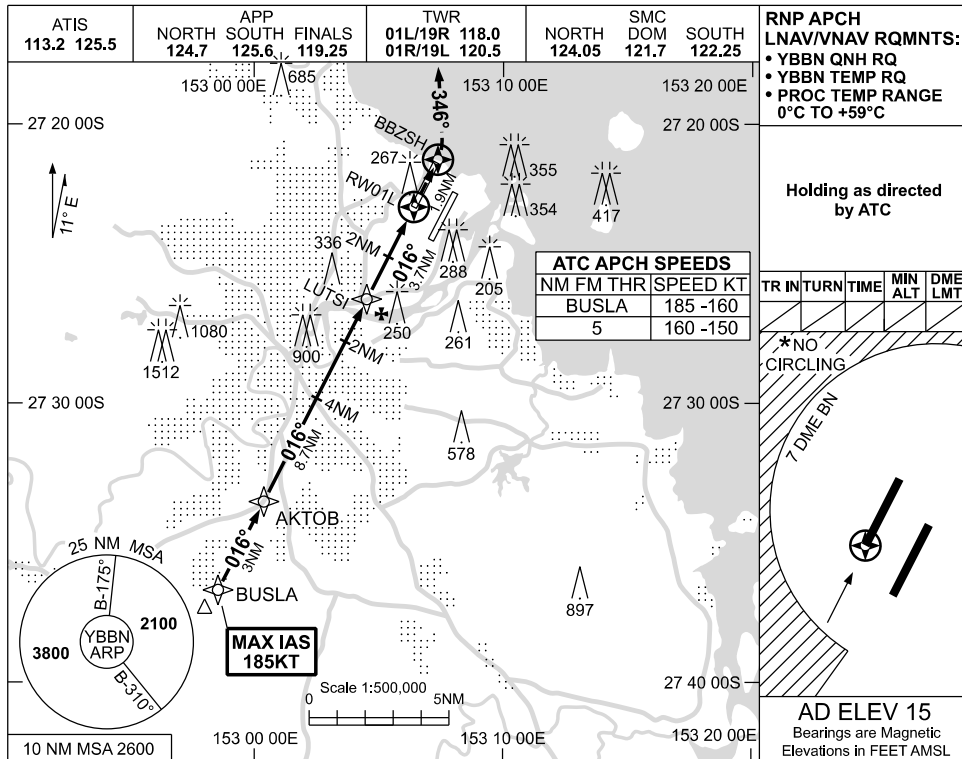
Changes: VALIDITY INDICATOR.

BBNSR33-SUP

**APPENDIX 28  
TO SUP H50/26**

**USE QNH**

**RNP Z RWY 01L  
BRISBANE, QLD (YBBN)**



|                 |                      |                      |                      |          |
|-----------------|----------------------|----------------------|----------------------|----------|
| <b>CATEGORY</b> | <b>A</b>             | <b>B</b>             | <b>C</b>             | <b>D</b> |
| LNAV/VNAV       |                      | <b>430 (417-1.6)</b> |                      |          |
| LNAV            |                      | <b>510 (495-2.1)</b> |                      |          |
| CIRCLING *      | <b>650 (635-2.4)</b> | <b>780 (765-4.0)</b> | <b>850 (835-5.0)</b> |          |
| ALTERNATE ‡     | (1135-4.4)           | (1265-6.0)           | (1335-7.0)           |          |

1. MAX IAS:  
 BUSLA : 185KT.  
 MISSED APCH  
 TURN : 210KT.  
 \*2. CAT D ACFT NO  
 CIRCLING WEST OF  
 01R / 19L BEYOND  
 7 DME BN.  
 ‡3. SPECIAL ALTN MNM  
 700/2.5 KM.  
 4. ACFT MAY BE RADAR  
 VECTORED TO BUSLA.

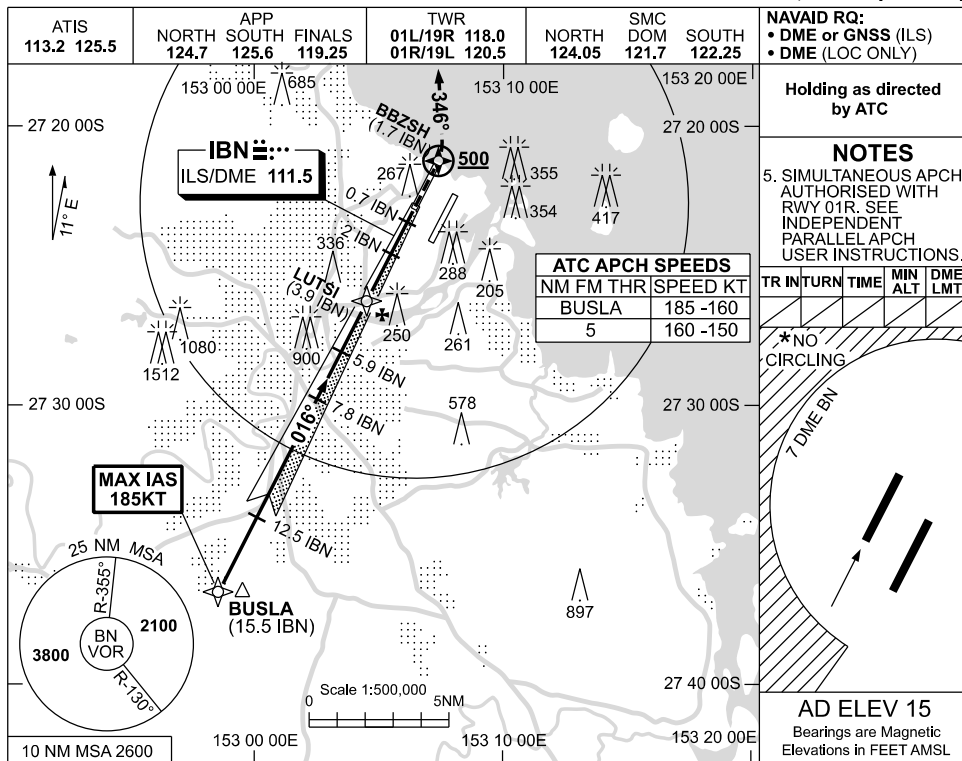
Changes: REVISED PROCEDURE.

BBNGN16-SUP

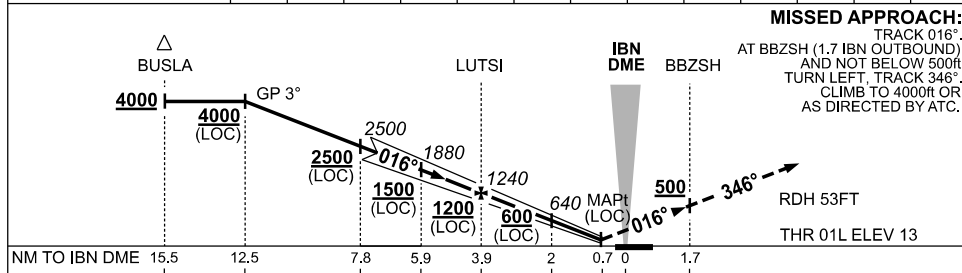
**APPENDIX 29  
TO SUP H50/26**

**USE QNH**

**ILS or LOC RWY 01L  
BRISBANE, QLD (YBBN)**



|                    |      |      |      |      |      |      |      |      |      |      |     |     |     |
|--------------------|------|------|------|------|------|------|------|------|------|------|-----|-----|-----|
| NM TO IBN DME      | 12.5 | 12   | 11   | 10   | 9    | 7.8  | 7    | 5.9  | 5    | 3.9  | 3   | 2   | 1.3 |
| ALT (3° APCH PATH) | 4000 | 3830 | 3510 | 3200 | 2880 | 2500 | 2240 | 1880 | 1600 | 1240 | 970 | 640 | 430 |



|               |      |      |     |     |     |     |     |     |     |
|---------------|------|------|-----|-----|-----|-----|-----|-----|-----|
| NM TO IBN DME | 15.5 | 12.5 | 7.8 | 5.9 | 3.9 | 2   | 0.7 | 0   | 1.7 |
| NM TO THR 01L | 15.4 | 12.4 | 7.7 | 5.7 | 3.7 | 1.8 | 0.5 | 0.2 | 1.9 |

| CATEGORY    | A             | B             | C             | D/DL          |
|-------------|---------------|---------------|---------------|---------------|
| S-I ILS     |               | 220 (207-0.8) | 550 RVR       |               |
| S-I LOC     |               | 430 (415-1.6) |               |               |
| CIRCLING *  | 650 (635-2.4) |               | 780 (765-4.0) | 850 (835-5.0) |
| ALTERNATE ‡ | (1135-4.4)    |               | (1265-6.0)    | (1335-7.0)    |

- NOTES**
- MAX IAS:  
BUSLA : 185KT.
  - CAT D ACFT NO  
CIRCLING WEST OF  
01R / 19L BEYOND  
7 DME BN.
  - SPECIAL ALTN MNM  
700/2.5 KM.
  - ACFT MAY BE RADAR  
VECTORED TO FNA.

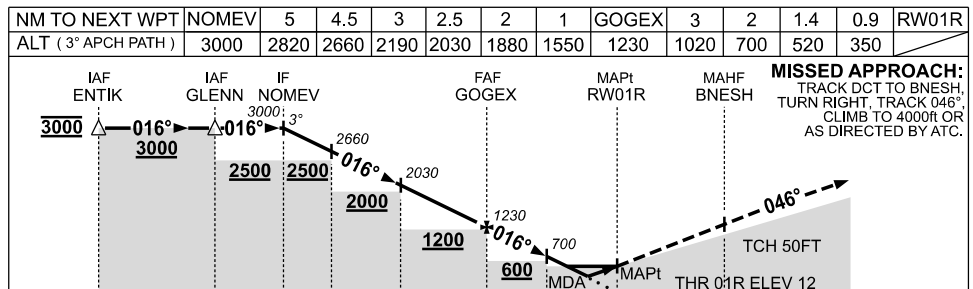
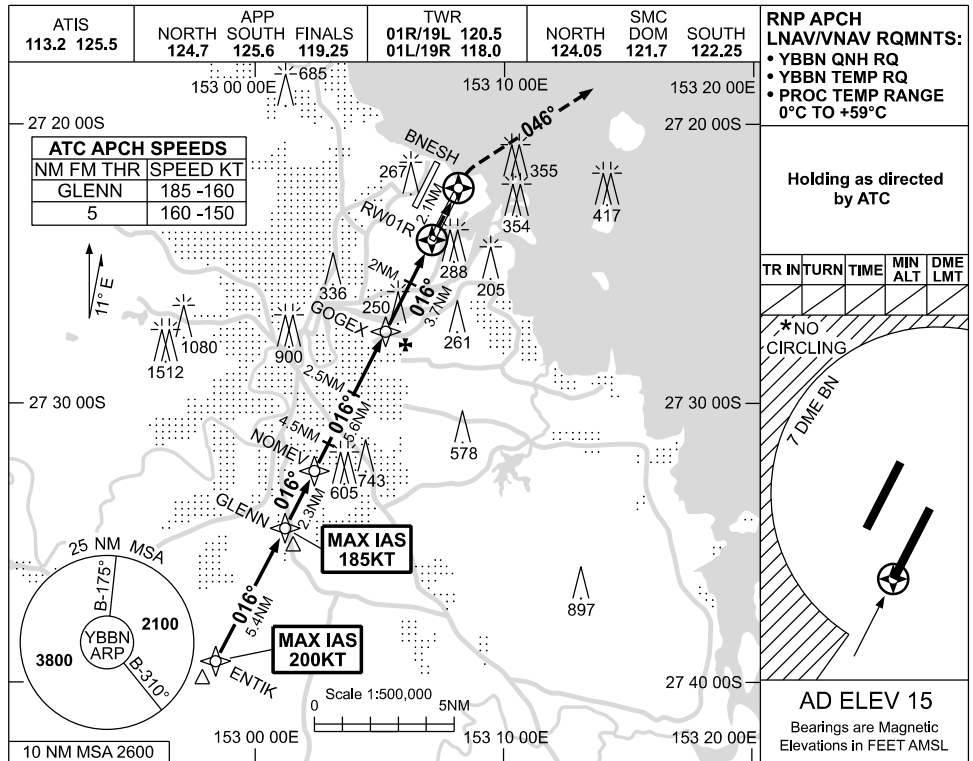
Changes: REVISED PROCEDURE.

BBNII06-SUP

**APPENDIX 30  
TO SUP H50/26**

**USE QNH**

**RNP Z RWY 01R  
BRISBANE, QLD (YBBN)**



| CATEGORY  | A             | B             | C             | D             |
|-----------|---------------|---------------|---------------|---------------|
| LNAV/VNAV |               | 350 (338-1.0) |               |               |
| LNAV      |               | 520 (505-2.0) |               |               |
| CIRCLING* | 650 (635-2.4) |               | 780 (765-4.0) | 850 (835-5.0) |
| ALTERNATE | (1135-4.4)    |               | (1265-6.0)    | (1335-7.0)    |

**NOTES**

- MAX IAS:  
ENTIK : 200KT  
GLENN : 185KT  
MISSED APCH  
TURN : 210KT
- CAT D ACFT NO CIRCLING WEST OF 01R / 19L BEYOND 7 DME BN.
- ACFT MAY BE RADAR VECTORED TO FNA.

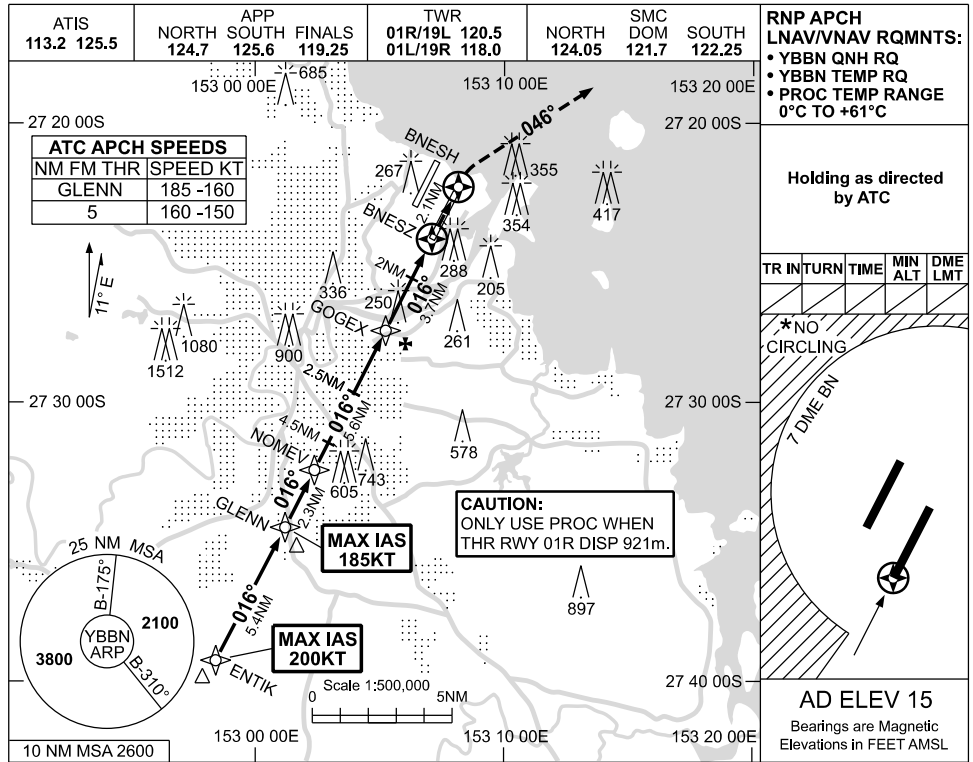
Changes: REVISED PROCEDURE.

BBNG03-SUP

**APPENDIX 31  
TO SUP H50/26**

**USE QNH**

**RNP T RWY 01R  
BRISBANE, QLD (YBBN)**

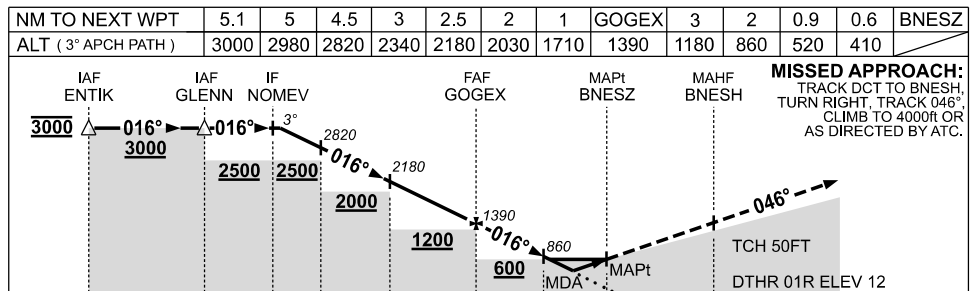


| TR | INTURN | TIME | MIN ALT | DME LMT |
|----|--------|------|---------|---------|
|    |        |      |         |         |

\*NO CIRCLING

7 DME BN

**AD ELEV 15**  
Bearings are Magnetic  
Elevations in FEET AMSL



| CATEGORY   | A             | B             | C             | D             |
|------------|---------------|---------------|---------------|---------------|
| LNAV/VNAV  |               | 410 (398-2.2) |               |               |
| LNAV       |               | 520 (505-2.9) |               |               |
| CIRCLING * | 650 (635-2.4) |               | 780 (765-4.0) | 850 (835-5.0) |
| ALTERNATE  | (1135-4.4)    |               | (1265-6.0)    | (1335-7.0)    |

**NOTES**

1. MAX IAS:  
ENTIK : 200KT  
GLENN : 185KT  
MISSED APCH  
TURN : 210KT.
- \*2. CAT D ACFT NO CIRCLING WEST OF 01R / 19L BEYOND 7 DME BN.
3. ACFT MAY BE RADAR VECTORED TO FNA.

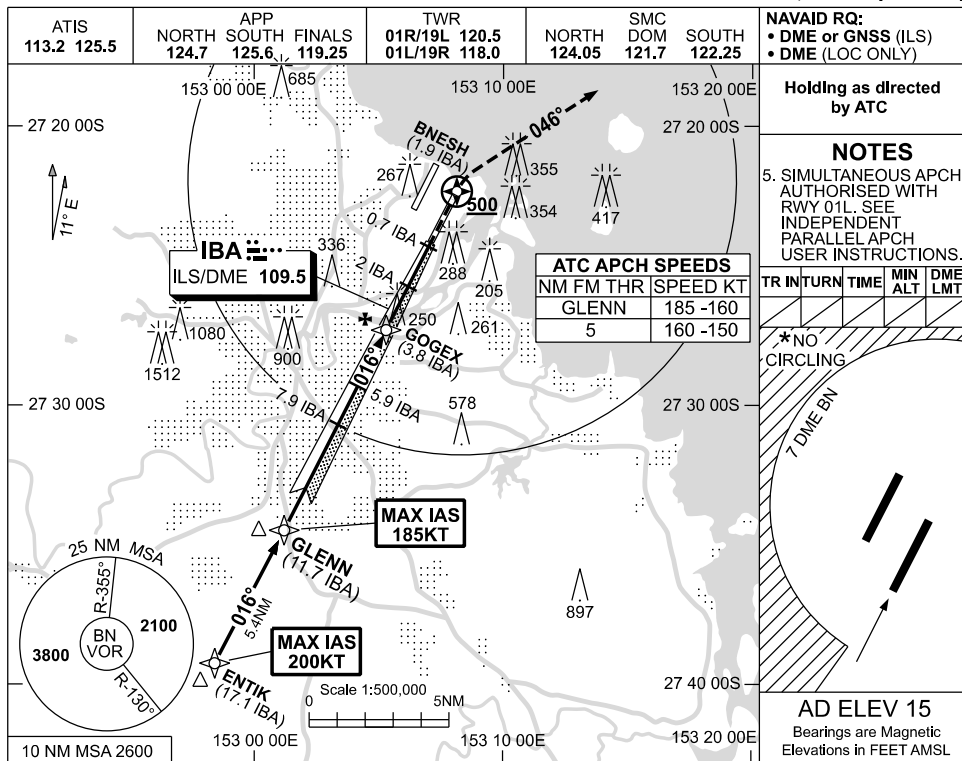
Changes: REVISED PROCEDURE.

BBNG04-SUP

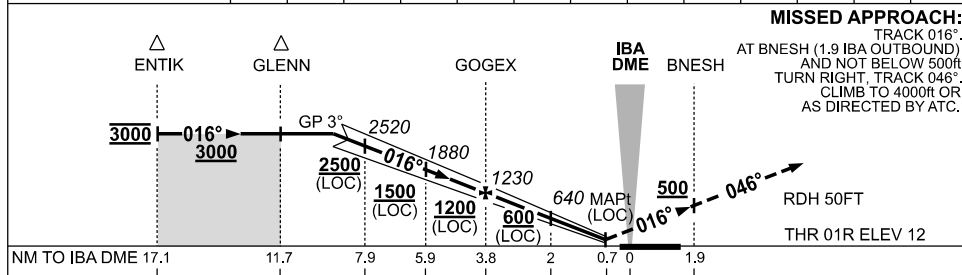
**APPENDIX 32  
TO SUP H50/26**

**USE QNH**

**ILS or LOC RWY 01R  
BRISBANE, QLD (YBBN)**



|                    |      |      |      |      |      |      |      |      |     |     |     |  |  |
|--------------------|------|------|------|------|------|------|------|------|-----|-----|-----|--|--|
| NM TO IBA DME      | 9.4  | 9    | 7.9  | 7    | 6    | 5.9  | 5    | 3.8  | 3   | 2   | 1.6 |  |  |
| ALT (3° APCH PATH) | 3000 | 2870 | 2520 | 2240 | 1920 | 1880 | 1600 | 1230 | 960 | 640 | 520 |  |  |



| CATEGORY    | A             | B             | C             | D/D <sub>L</sub> |
|-------------|---------------|---------------|---------------|------------------|
| S-I ILS     |               | 220 (208-0.8) | 550 RVR       |                  |
| S-I LOC     |               | 520 (505-2.0) |               |                  |
| CIRCLING *  | 650 (635-2.4) | 780 (765-4.0) | 850 (835-5.0) |                  |
| ALTERNATE ‡ | (1135-4.4)    | (1265-6.0)    | (1335-7.0)    |                  |

**NOTES**

1. MAX IAS:  
ENTIK : 200KT  
GLENN : 185KT
- \* 2. CAT D ACFT NO CIRCLING WEST OF 01R / 19L BEYOND 7 DME BN.
- ‡ 3. SPECIAL ALTN MNM 700/2.5 KM.
4. ACFT MAY BE RADAR VECTORED TO FNA.

Changes: REVISED PROCEDURE.

BBNII05-SUP