

**AIP SUPPLEMENT  
(SUP)****H48/26****Effective: 202604020000 UTC**AERONAUTICAL INFORMATION SERVICE,  
AIRSERVICES AUSTRALIA, GPO BOX 367,  
CANBERRA ACT 2601For **DISTRIBUTION** queries, contact:  
Email: [aim\\_editorial@airservicesaustralia.com](mailto:aim_editorial@airservicesaustralia.com)For **CONTENT** queries regarding this SUP, contact:  
Email: [nick.anderson@melair.com.au](mailto:nick.anderson@melair.com.au)

Phone: +61 455 333 889

**MELBOURNE AERODROME (YMML)  
TAXIWAY ALPHA RECOMMISSIONING****1. INTRODUCTION**

- 1.1 This AIP SUP cancels and replaces SUP H21/26 with a change to the appendices.
- 1.2 This AIP SUP summarises the recommissioning of TWY A between TWY T and TWY D, which was reconstructed in order to facilitate the future realignment of TWY E between TWY A and TWY P.
- 1.3 Further detail surrounding these works is present within YMML Method of Working Plan 2024-1 Taxiway Zulu, published on the Melbourne Airport [website](#).

**2. WORKS PROGRAM**

- 2.1 TWY A between TWY D and TWY T is scheduled to be recommissioned on 02 April 2026.
- 2.2 The realigned TWY E BTN TWY A and TWY P is scheduled to be recommissioned in November 2026.

**3. OPERATIONAL INFORMATION**

- 3.1 The recommissioned portion of TWY A will be available for Code F aircraft ground movements, including in conditions of RVR <350M. Refer Appendices 2, 3 and 4 .
- 3.2 Left turns from TWY F onto TWY A northbound, and right turns from TWY A southbound onto TWY F are available from 02 April 2026 via new line marking.

#### **4. CANCELLATION**

- 4.1 This SUP will be cancelled when it is incorporated into AIP products, expected 26 November 2026.

#### **5. DISTRIBUTION**

- 5.1 Airservices Australia website only.

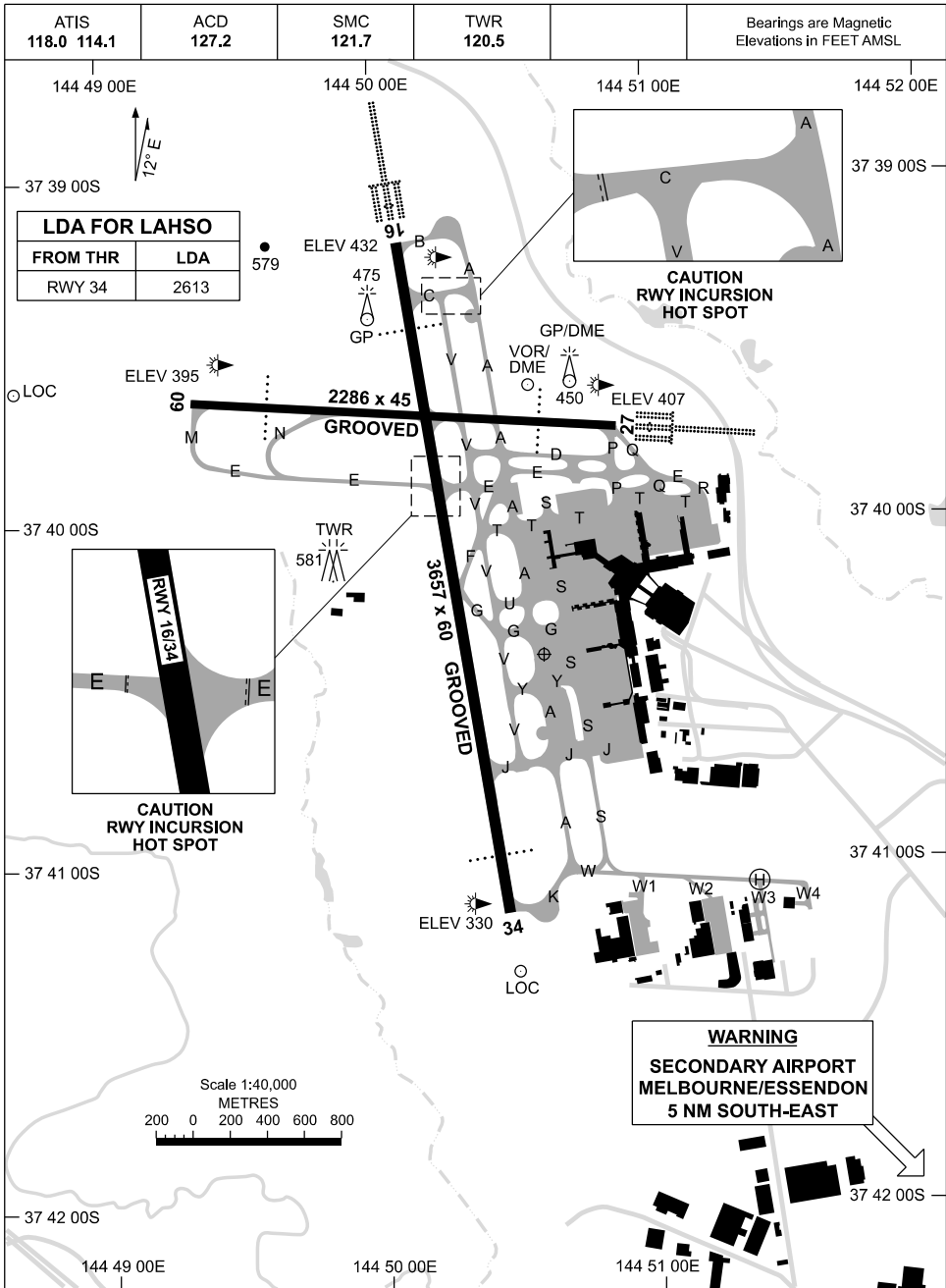
#### **Appendices**

1. Aerodrome Chart - Page 1
2. Aerodrome Ground Movement Chart - Page 1
3. Aerodrome Ground Movement Chart - Page 2
4. Aerodrome Ground Movement Chart - Page 3

**APPENDIX 1  
TO SUP H48/26**

AD ELEV 434  
37 40 24S 144 50 36E

**AERODROME CHART - Page 1  
MELBOURNE, VIC (YMML)**

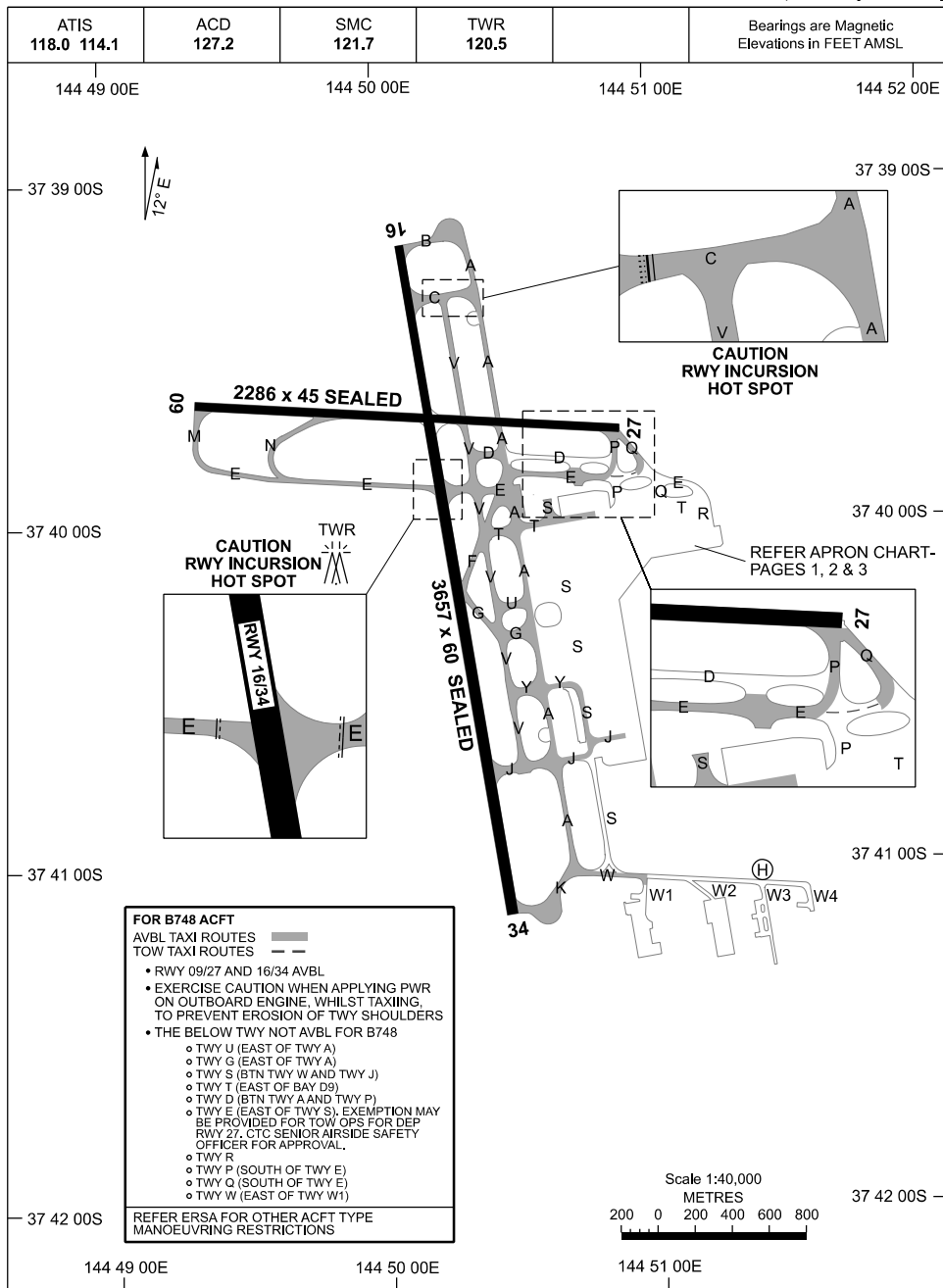


Changes: Editorial.

MMLAD01-SUP

**APPENDIX 2  
TO SUP H48/26**

**AERODROME GROUND MOVEMENT CHART - Page 1  
MELBOURNE, VIC (YMML)**

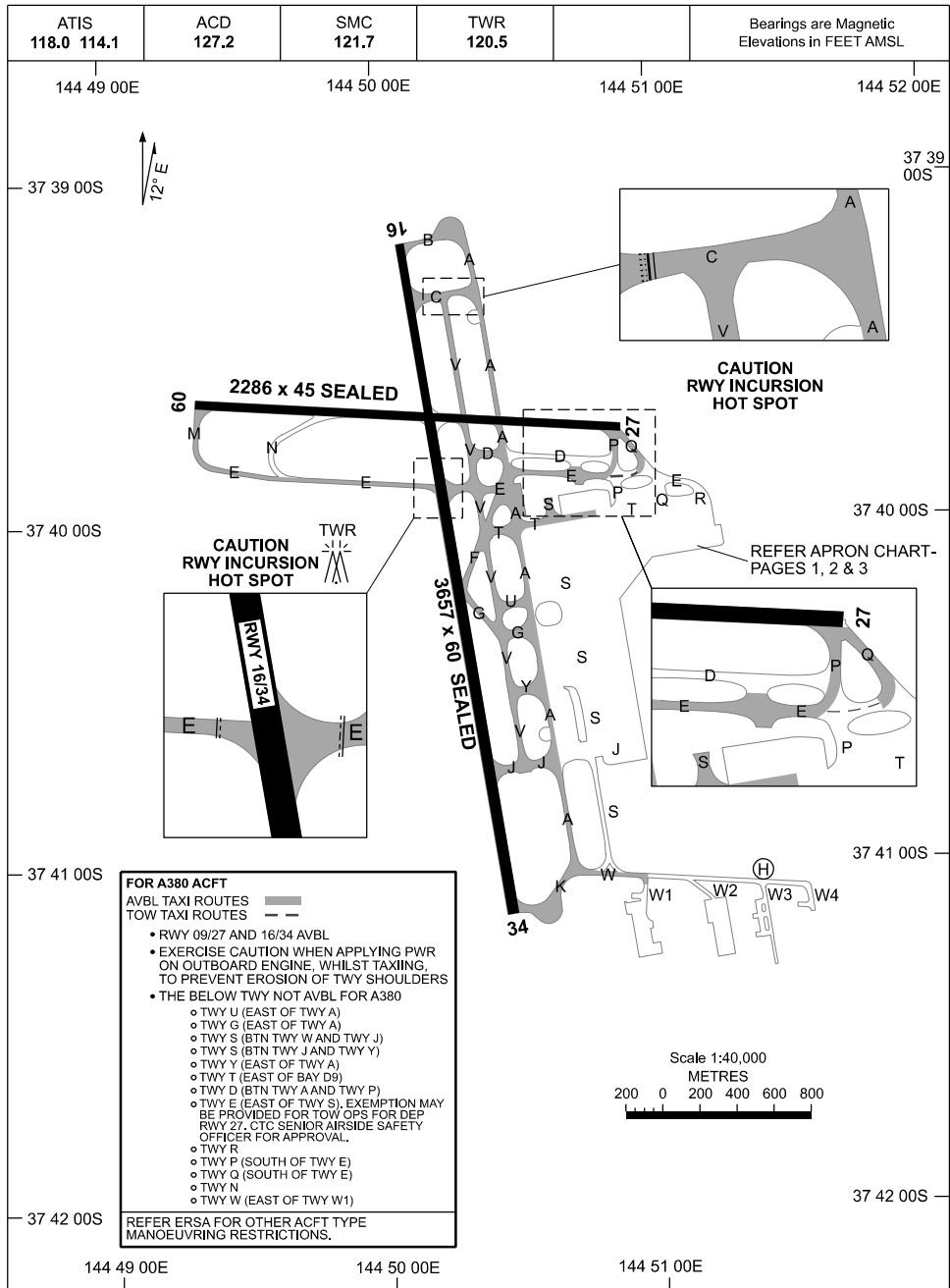


Changes: TWY E AMD, Editorial.

MMLAG01-SUP

**APPENDIX 3  
TO SUP H48/26**

**AERODROME GROUND MOVEMENT CHART - Page 2  
MELBOURNE, VIC (YMML)**

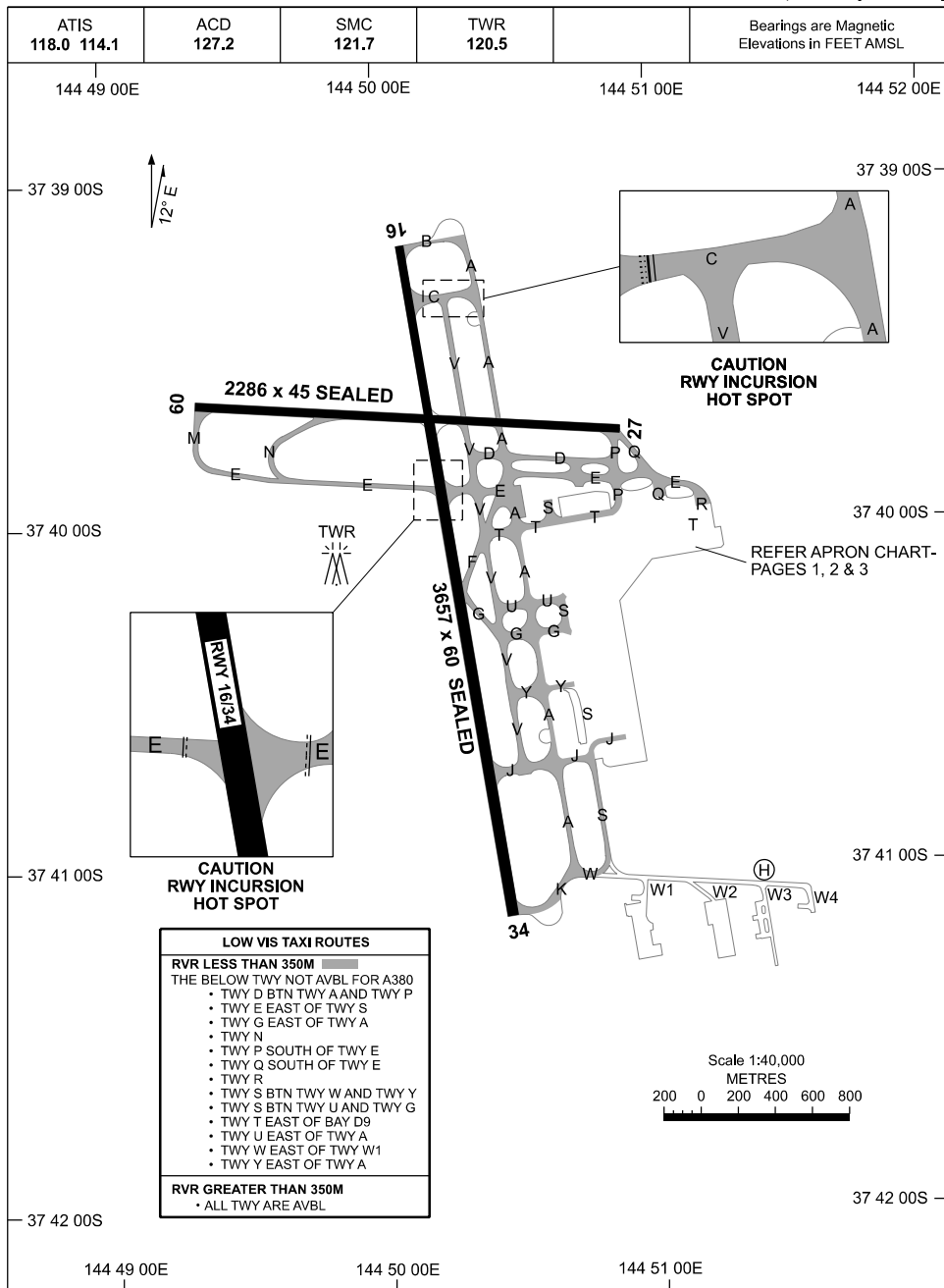


Changes: TWY E AMD, Editorial.

MMLAG02-SUP

**APPENDIX 4  
TO SUP H48/26**

**AERODROME GROUND MOVEMENT CHART - Page 3  
MELBOURNE, VIC (YMML)**



Changes: TWY E AMD, Editorial.

MMLAG04-SUP