

**AIP SUPPLEMENT  
(SUP)****H47/26****Effective: 202603300500 UTC**

AERONAUTICAL INFORMATION SERVICE,  
AIRSERVICES AUSTRALIA, GPO BOX 367,  
CANBERRA ACT 2601

For **DISTRIBUTION** queries, contact:  
Email: [aim\\_editorial@airservicesaustralia.com](mailto:aim_editorial@airservicesaustralia.com)

For **CONTENT** queries regarding this SUP, contact:  
Email: [vratnayake@tsvairport.com.au](mailto:vratnayake@tsvairport.com.au)

# **TOWNSVILLE/TOWNSVILLE INTL AERODROME (YBTL) RWY 01/19 EXTENSION, STAGES 1C AND 2 OPERATIONAL RESTRICTIONS**

## **1. INTRODUCTION**

- 1.1 This SUP cancels and replaces SUP H40/26 with amended Declared Distances and Gradient Changes for RWY 01/19 during stages 1C and 2.
- 1.2 This SUP provides operational information for users of Townsville Airport (YBTL) during Stage 1C and Stage 2 of the P0012 - RWY 01/19 Extension, Pavement Overlay and AGL Upgrade Project.
- 1.3 Stage 1C includes the closure of RWY 01/19 and closure of Taxiways to allow for placement of new asphalt pavement and new line marking on RWY 01/19, TWY E1, TWY E2 and between TWY A7 to A1, earthworks (fill placement) within the extended RWY 19 area, Runway Grooving and surface texture testing (wet friction), and installation of new Airfield Ground Lighting (AGL) assets to facilitate the upgrade to LED. Commencement and timings of Stage 1C will be notified by NOTAM.
- 1.4 Stage 2 includes the closure of TWY, Z, TWY W, and TWYA7 with a temporary displaced threshold for RWY 19 to allow for demolition of pavement, removal and relocation of RWY 19 IWI, bulk earthworks, and pavement construction. Commencement of stage 2 will be notified by NOTAM.
- 1.5 It is essential that pilots ensure they understand displaced threshold markings and the associated requirements of displaced threshold operations. Pilots are reminded to check YBTL NOTAM during works to ensure they are using the correct RWY distances.

## 2. REFERENCES

- 2.1 Method of Working Plan – MOWP 02/2026 Version 1.0  
[www.townsvilleairport.com.au/corporate-partnerships/operations-regulations/flight-operations/Method-of-Working-Plan](http://www.townsvilleairport.com.au/corporate-partnerships/operations-regulations/flight-operations/Method-of-Working-Plan)
- 2.2 Refer to the AIP SUP on [www.airservicesaustralia.com/aip/aip.asp](http://www.airservicesaustralia.com/aip/aip.asp)
- Townsville/Townsville INTL Aerodrome (YBTL) DAP for Temporary Displaced Threshold RWY 19 - Stage 2
  - Townsville/Townsville INTL Aerodrome (YBTL) New RNP-AR Procedure

## 3. STAGE 1C

- 3.1 Stage 1C will be in operation 2200 to 0600 Local (1200 to 2000 UTC), concurrent with Stage 2, commencing 28 MAR to 09 MAY 2026.
- 3.2 Stage 1C works include placement of new asphalt pavement and new line marking on RWY 01/19, TWY E1, TWY E2 and between TWY A7 to A1, earthworks (fill placement) within the extended RWY 19 area, Runway Grooving and surface texture testing (wet friction), and installation of new AGL assets to facilitate the upgrade to LED.
- 3.3 RWY 01/19 details:
- RWY CLOSED
- 3.4 Taxiway details:
- TWY W, A1, A5, A6, A7, G1, G2, E1, E2, C, D2, D3, and B3 CLOSED.

## 4. STAGE 2

- 4.1 This stage will be in operation H24 or 0600 to 2200 Local (2000 to 1200 UTC) when concurrent with Stage 1C, commencing 27 FEB to 18 DEC 2026.
- 4.2 Stage 2 works include demolition of RWY 19 and TWY A7 pavement, removal and relocation of RWY 19 IWDI, bulk earthworks and pavement construction for RWY 19 extension.
- 4.3 RWY 01/19 Details:
- RWY 19 threshold displaced 478M
  - RWY 01/19 418M northern end closed.

	TORA	TODA	ASDA	LDA
<b>RWY 01</b>	1960 (6431)	2020 (6627) (2.0)	1960 (6431)	1960 (6431)
<b>RWY 19</b>	2020 (6627)	2222 (7290) (2.65)	2020 (6627)	1960 (6431)

<b>Supplementary Takeoff Distances</b>				
<b>RWY 01</b>	1960 (6430)(1.6)	2007 (6583)(1.9)		
<b>RWY 19</b>	1493(4898)(1.6)	2074(6804)(1.9)	2154(7067)(2.2)	2203(7228) (2.5)

#### 4.4 Taxiway Details:

- TWY Z, W, and A7 closed.

## 5. CONTACT

### 5.1 For further information contact:

[aviation@tsairport.com.au](mailto:aviation@tsairport.com.au)

## 6. CANCELLATION

### 6.1 This SUP cancels when Stage 1C is complete, expected May 2026.

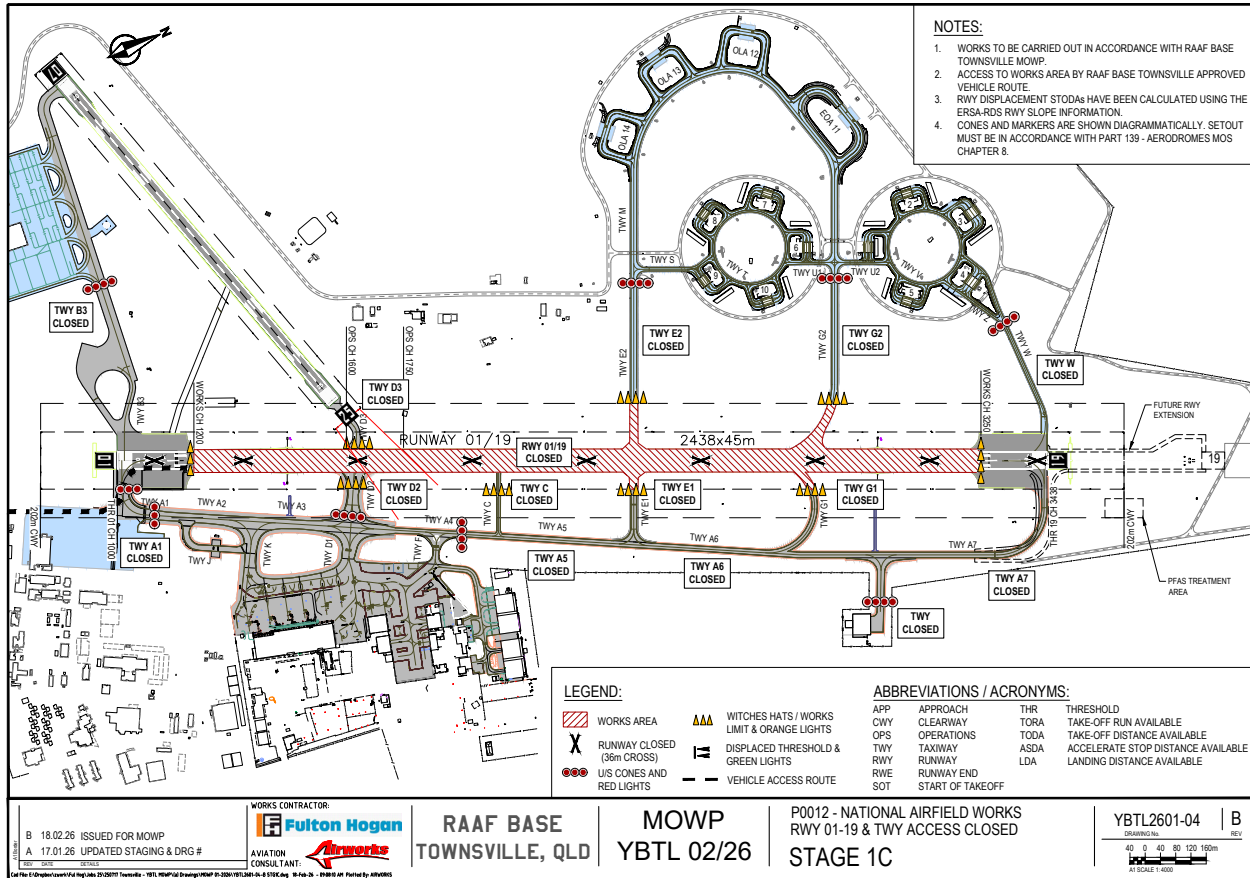
## 7. DISTRIBUTION

### 7.1 Airservices Australia website only.

## Appendices

1. Stage 1C Works
2. Stage 2 Works

1. Stage 1C Works



## 2. Stage 2 Works

