

**AIP SUPPLEMENT
(SUP)****H44/26****Effective: 202604180200 UTC**AERONAUTICAL INFORMATION SERVICE,
AIRSERVICES AUSTRALIA, GPO BOX 367,
CANBERRA ACT 2601For **DISTRIBUTION** queries, contact:
Email: aim_editorial@airservicesaustralia.comFor **CONTENT** queries regarding this SUP, contact:
Email: DSS.East@airservicesaustralia.com**FLIGHT COMMISSIONING –
SYDNEY/NANCY-BIRD WALTON (YSWS)
AERODROME, 18-30 APRIL 2026****1. INTRODUCTION**

- 1.1 The flight commissioning for Sydney/Nancy Bird Walton (YSWS) Aerodrome will take place from Saturday 18 April until Thursday 30 April 2026.
- 1.2 AeroPearl, Airservices Australia's flight inspection service provider, will be performing multiple flight commissioning runs on each Instrument Landing System (ILS) at YSWs. Planned events will affect D539B, D556A, D556B, D552 and the uncontrolled airspace to the south-west of YSWs, as well as operations above, within civil controlled airspace.

2. ACTIVITIES AND TIMES

- 2.1 The flight commissioning will take place over YSWs and arrival paths as follows:

Activity	TRA Reference	Date	Time (Local)
Proposed day 1	1 or 2	Saturday, 18 April	1200 - 1730
Proposed day 2	1 or 2	Sunday, 19 April	0600 - 1200
Proposed day 3	1 or 2	Monday, 20 April	1100 - 1500
Proposed day 4	1 or 2	Tuesday, 21 April	1100 - 1500
Proposed day 5	1 or 2	Wednesday, 22 April	1100 - 1500
Proposed day 6	1 or 2	Thursday, 23 April	1100 - 1500
Proposed day 7	1 or 2	Tuesday, 28 April	1100 - 1500
Proposed day 8	1 or 2	Wednesday, 29 April	1100 - 1500
Proposed day 9	1 or 2	Thursday, 30 April	1100 - 1500

3. AIRSPACE MANAGEMENT - TEMPORARY RESTRICTED AREA ESTABLISHED

- 3.1 To ensure safety, the flight commissioning runs will be segregated from other aviation activity through activation of two distinct Temporary Restricted Area (TRAs).
- 3.2 The TRAs will encompass Class G airspace within the limits defined below, and will encroach on D539B, D556A, D556B, D552.
- 3.3 The first TRA (TRA 1) is defined as follows:

YMMM/TRA 1

CONDITIONAL STATUS: RA2

LATERAL LIMITS: 340500S 1502530E - 335800S 1502100E-334630S 1504500E - 335230S 1505000E - 340500S 1502530E

VERTICAL LIMITS: SFC – 4000FT excluding coincident portions of CTA

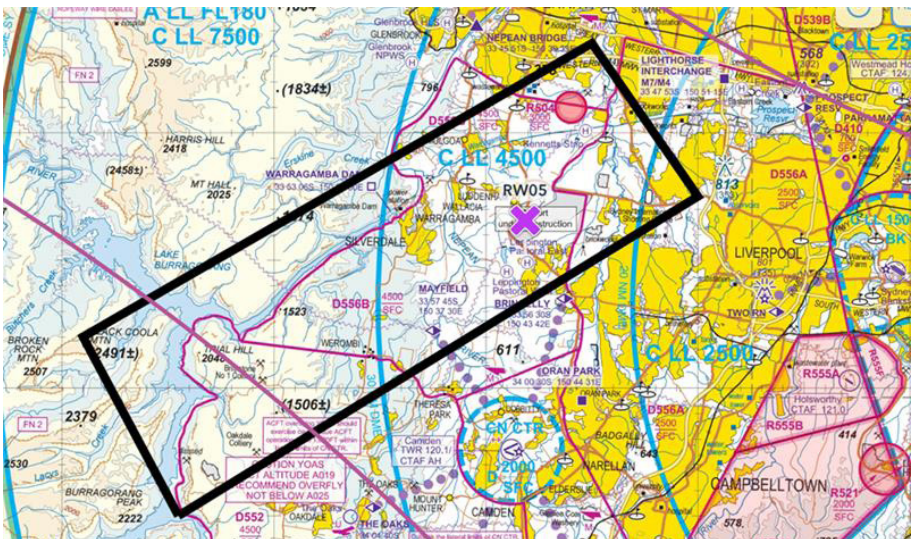
CONTROLLING AUTHORITY: Airservices Australia

PHONE: 02 9556 6853

CONTROL FREQUENCY: 129.7

AREA FREQUENCY: 124.55

- 3.4 The following diagram represents TRA 1.



3.5 The second TRA (TRA 2) is defined as follows:

YMMM/TRA 2

CONDITIONAL STATUS: RA2

LATERAL LIMITS: 335745S 1503730E - 335212S 1503300E - 334000S 1505830E - 334554S 1510430E - 335745S 1503730E

VERTICAL LIMITS: SFC – 2500FT excludes coincident portions of CTA

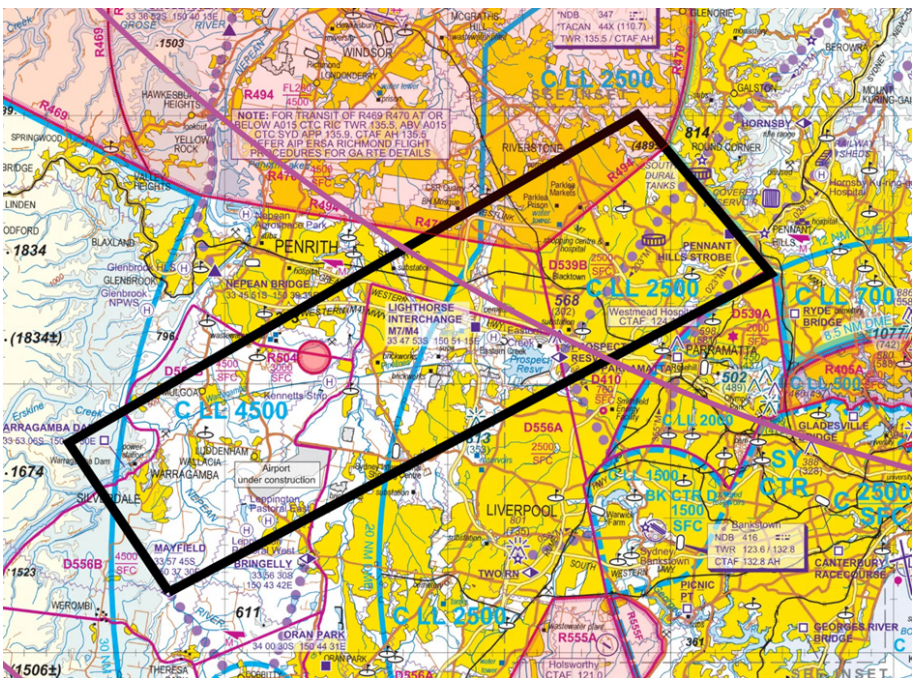
CONTROLLING AUTHORITY: Airservices Australia

PHONE: 02 9556 6853

CONTROL FREQUENCY: 129.7

AREA FREQUENCY: 124.55

3.6 The following diagram represents TRA 2.



- 3.7 TRA 1 and 2 will be active as per para 2.1 and NOTAM accordingly to allow for YSWs flight commissioning activity.
- 3.8 ATC may authorise aircraft to transit TRA when available during period of activation.
- 3.9 Bankstown TWR, Camden TWR and Sydney ATC will notify aircraft of TRA immediately prior to activation period.
- 3.10 TRA 1 and 2 will be deactivated by the controlling authority at the completion of the flight commissioning daily. Pilots should contact SY ATC to obtain airspace status if transit is required prior to NOTAM expiration.
- 3.11 Special arrangements will be in place for Emergency Medical Services (EMS) and police helicopters.
- 3.12 For further information: <https://engage.airservicesaustralia.com/wsi-industry>

4. CANCELLATION

- 4.1 This SUP self-cancels at 202604300500 UTC.

5. DISTRIBUTION

- 5.1 Airservices Australia website only.