

**AIP SUPPLEMENT  
(SUP)****AIRAC****H64/25****Effective: 202505141600 UTC**

AERONAUTICAL INFORMATION SERVICE,  
AIRSERVICES AUSTRALIA, GPO BOX 367,  
CANBERRA ACT 2601

For **DISTRIBUTION** queries, contact:  
Email: [aim.editorial@airservicesaustralia.com](mailto:aim.editorial@airservicesaustralia.com)

For **CONTENT** queries regarding this SUP, contact:  
Email: [bas@globalairspaceolutions.com](mailto:bas@globalairspaceolutions.com)

# **BALLARAT AERODROME (YBLT) DEPARTURE AND APPROACH CHARTS**

## **1. INTRODUCTION**

- 1.1 This AIP SUP cancels and replaces SUP H55/25 with a change to Waypoint Identifiers in para 3 and in Appendices 3 and 4.
- 1.2 This AIP SUP introduces and amends Departure and Approach Procedures (DAP) procedures for Ballarat Aerodrome (YBLT).

## **2. IMPLEMENTATION**

- 2.1 The procedures in the appendices become effective 202505141600 UTC and replace the same procedures published in DAP.
- 2.2 Recommended coding sheets for the procedures are available on request.

### 3. WAYPOINTS

Waypoint	Latitude	Longitude
BT2ND	371806.91S	1434407.06E
BT2NE	371534.72S	1435033.65E
BT2NF	372528.12S	1434839.22E
BT2NG	371932.72S	1435545.21E
BT2NI	372031.43S	1434936.51E
BT2SA	374340.27S	1435106.37E
BT2SC	374213.84S	1433924.62E
BT2SF	373619.11S	1434632.99E
BT2SI	374115.74S	1434535.22E
RW18	373024.80S	1434741.78E
RW36	373122.45S	1434730.60E

### 4. NEW THRESHOLDS

RWY	Latitude	Longitude	Elevation
36	373122.45S	1434730.60E	1444FT

### 5. CANCELLATION

- 5.1 This SUP will be cancelled when it is incorporated into AIP DAP, expected to be in DAP Amendment 184, effective 04 September 2025.

### 6. DISTRIBUTION

- 6.1 Airservices Australia website only.

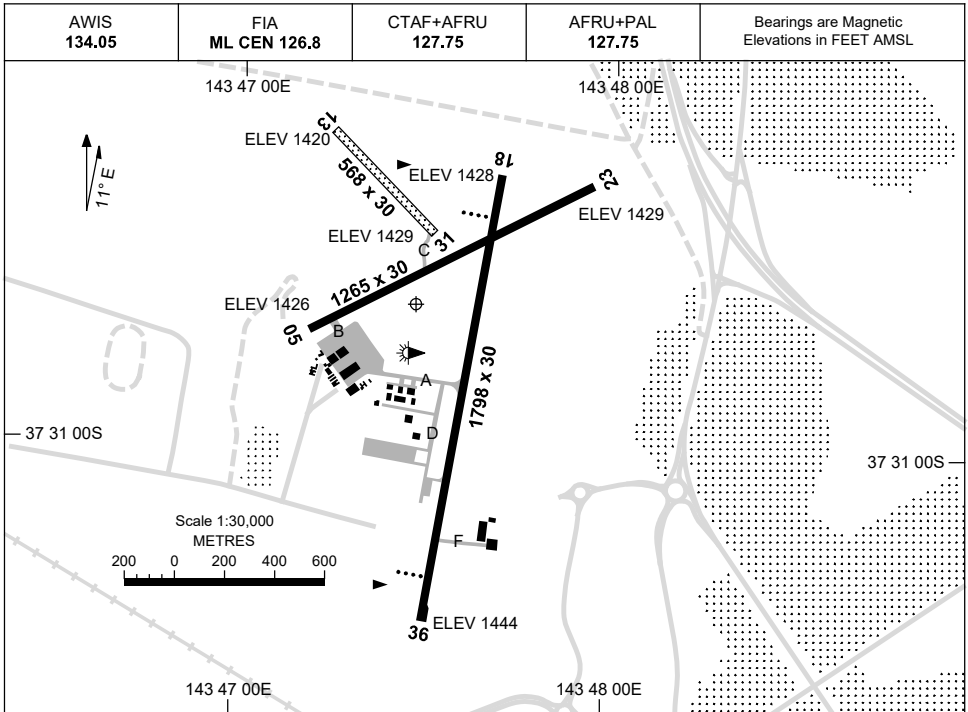
### Appendices

1. AERODROME CHART
2. SID BALLARAT ONE DEPARTURE
3. RNP RWY 18
4. RNP RWY 36

**APPENDIX 1  
TO SUP H64/25**

AD ELEV 1444  
37 30 42S 143 47 28E

**AERODROME CHART  
BALLARAT, VIC (YBLT)**



RWY		AERODROME LIGHTING
		TAXIWAY: BLUE EDGE RL : AFRU+PAL 127.75 , MAN , PTBL (BY ARRANGEMENT)
<b>18</b> <sup>178</sup>		PAPI RIGHT SIDE 3.0° 29.5FT LIRL
<sup>358</sup> <b>36</b>		PAPI LEFT SIDE 3.0° 29.5FT LIRL
<b>05</b> <sup>051</sup>		NIL
<sup>231</sup> <b>23</b>		NIL
<b>13</b> <sup>124</sup>		NIL
<sup>304</sup> <b>31</b>		NIL

**NOTES**

1. RWY 18/36 LIGHTING ACTIVATED HN.
2. AWIS RQ 1 SEC TRANSMIT PULSE TO ACTIVATE.
3. FIA FREQ 126.8 AVBL 2,000FT.

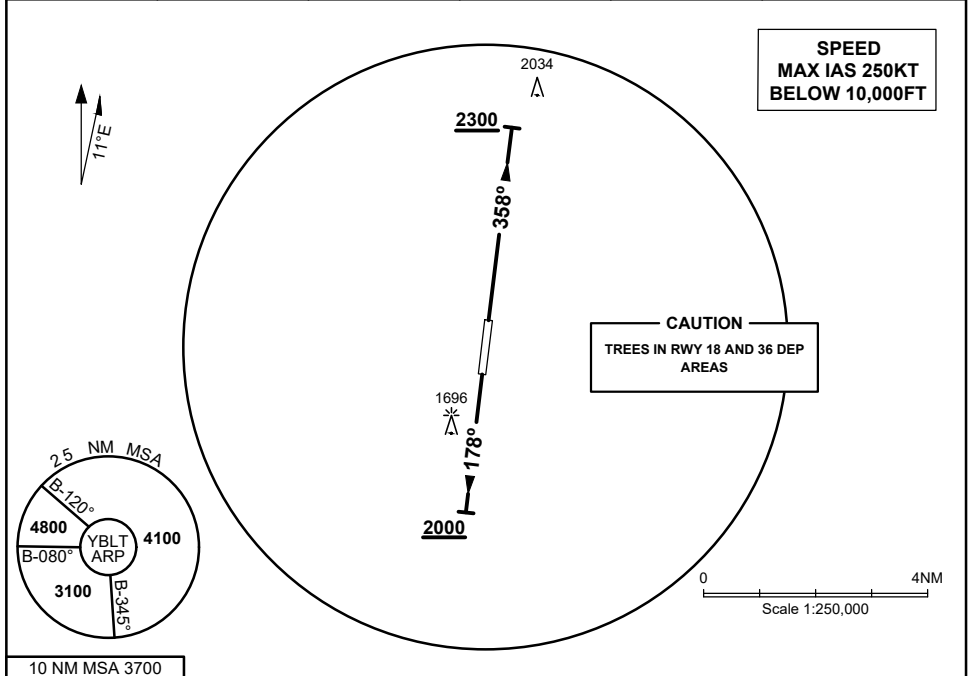
Changes: RWY EXTENSION, WDI, Editorial.

BLTAD01-SUP

**APPENDIX 2  
TO SUP H64/25**

**STANDARD INSTRUMENT DEPARTURES (SID)  
BALLARAT ONE DEPARTURE  
BALLARAT, VIC (YBLT)**

AWIS 134.05	FIA ML CEN 126.8	CTAF + AFRU 127.75	AFRU + PAL 127.75		Bearings are Magnetic Elevations in FEET AMSL
----------------	---------------------	-----------------------	----------------------	--	--------------------------------------------------



10 NM MSA 3700

**BALLARAT ONE DEPARTURE**

**RWY 18**

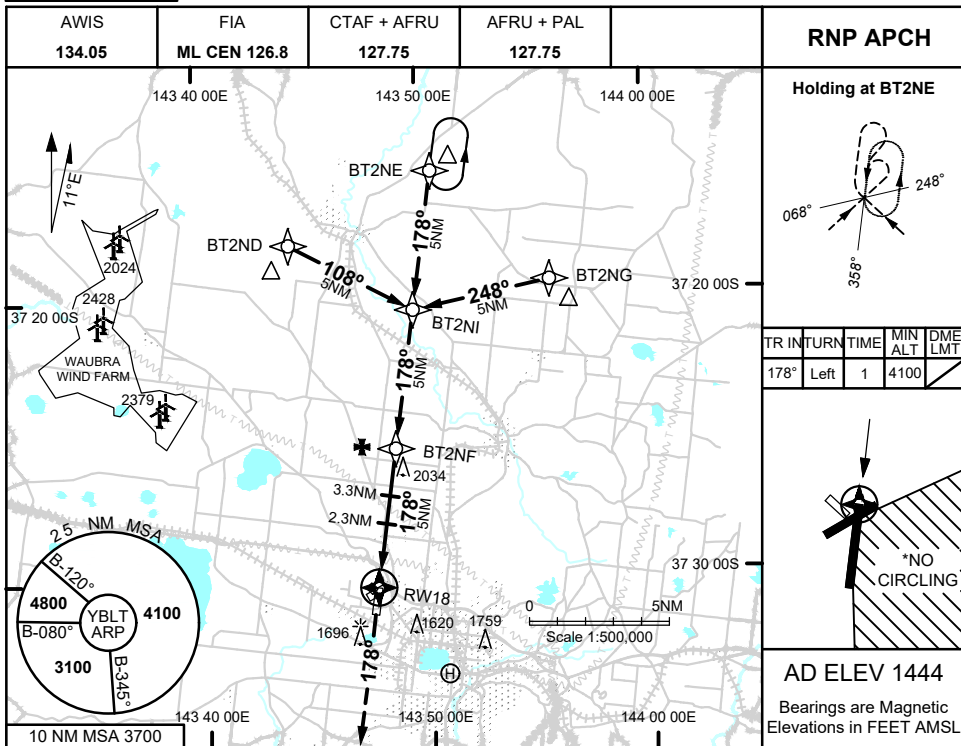
- GRAD 3.6% to 2000FT, thence 3.3%
- Track 178°
- AT or ABV 2000FT turn as required
- Continue climb to 4800FT
- Intercept flight plan route

**RWY 36**

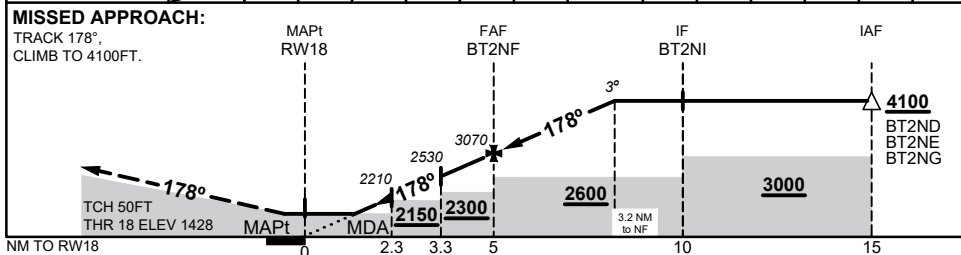
- GRAD 4.1% to 2300FT, thence 3.3%
- Track 358°
- AT or ABV 2300FT turn as required
- Continue climb to 4800FT
- Intercept flight plan route

**APPENDIX 3  
TO SUP H64/25**

**RNP RWY 18  
BALLARAT, VIC (YBLT)**



NM TO NEXT WPT	RW18	1.3	2	2.3	3	3.3	4	BT2NF	1	2	3	3.2	
ALT (3° APCH PATH)		1880	2110	2210	2430	2530	2750	3070	3390	3710	4030	4100	



**NOTES**

1. MAX IAS:  
INITIAL : 210KT
- \*2. NO CIRCLING IN SECTOR EAST OF RWY 05/23 AND RWY 18/36

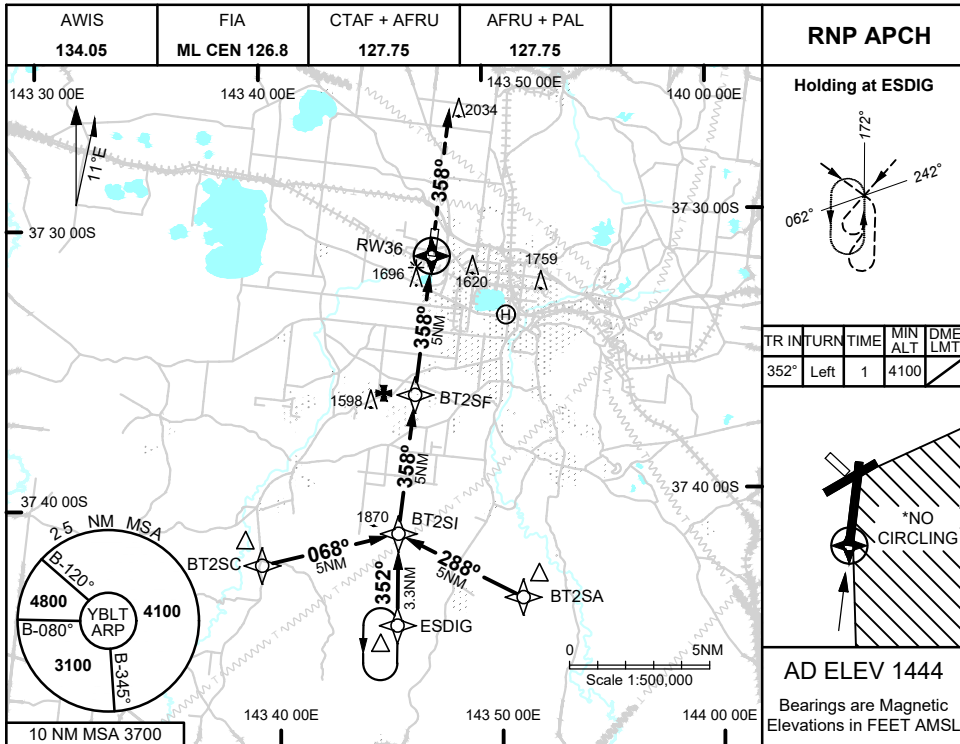
CATEGORY	A	B	C	D
LNAV	<b>1880 (452 - 2.5)</b>			<b>NOT APPLICABLE</b>
CIRCLING*	<b>2240 (796 - 2.4)</b>	<b>2540 (1096 - 4.0)</b>		
ALTERNATE	<b>(1296 - 4.4)</b>		<b>(1596 - 6.0)</b>	

Changes: MSA, LNAV AND CIRCLING MINIMA, ADDED CAT C, VERT PROFILE, DIST/ALT TABLE, LOGO, 5LNC, Editorial

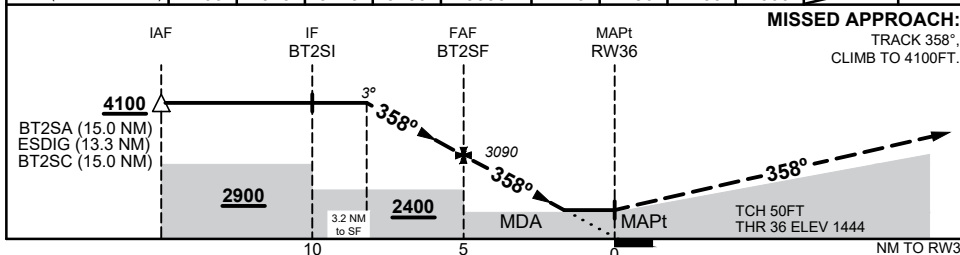
BLTGN01-SUP

**APPENDIX 4  
TO SUP H64/25**

**RNP RWY 36  
BALLARAT, VIC (YBLT)**



NM TO NEXT WPT	3.2	3	2	1	BT2SF	4	3	2	1.8	RW36	
ALT (3° APCH PATH)	4100	4040	3720	3400	3090	2770	2450	2130	2060		



1. MAX IAS:  
INITIAL : 210KT
- \*2. NO CIRCLING IN SECTOR EAST OF RWY 05/23 AND RWY 18/36

CATEGORY	A	B	C	D
LNAV	<b>2060 (616 - 3.5)</b>			NOT APPLICABLE
CIRCLING*	<b>2240 (796 - 2.4)</b>		<b>2540 (1096 - 4.0)</b>	
ALTERNATE	(1296 - 4.4)		(1596 - 6.0)	

Changes: MSA, LNAV AND CIRCLING MINIMA, THR ELEV, ADDED CAT C, VERT PROFILE, DIST/ALT TABLE, 5LNC, LOGO, Editorial

BLTGN02-SUP