

**AIP SUPPLEMENT
(SUP)****H58/25****Effective: 202503301930 UTC**

AERONAUTICAL INFORMATION SERVICE,
AIRSERVICES AUSTRALIA, GPO BOX 367,
CANBERRA ACT 2601

For **DISTRIBUTION** queries, contact:
Email: aim_editorial@airservicesaustralia.com

For **CONTENT** queries regarding this SUP, contact:
Email: beaton@aal.com.au

ADELAIDE AERODROME (YPAD) OPERATIONAL RESTRICTIONS: TAXIWAY L2 CONSTRUCTION PROJECT

1. INTRODUCTION

- 1.1 This AIP SUP cancels and replaces SUP H41/25 and H52/25 with amendments to RWY 23 threshold displacement in para 4.
- 1.2 This SUP provides operational information for users of Adelaide Aerodrome (YPAD) during the TWY L2 Construction Project.
- 1.3 A temporary displaced threshold has been implemented for RWY 05/23 to enable pavement construction, airfield lighting and power supply. Commencement will be notified by NOTAM.
- 1.4 The displaced threshold will be operational outside of the construction works period.
- 1.5 The displaced threshold will affect the RWY length and RWY and/or TWY availability, which may result in delays for aircraft operations at YPAD.
- 1.6 It is essential that pilots ensure they understand displaced threshold markings and the associated requirements of displaced threshold operations. Pilots are reminded to check YPAD NOTAM during works to ensure they are using the correct RWY distances.
- 1.7 Temporary instrument approaches are published in a separate AIP SUP.

2. REFERENCES

- 2.1 Method of Working Plan – MOWP 25/03.
- 2.2 Refer to the AIP SUP on <https://www.airservicesaustralia.com/aip/aip.asp>
ADELAIDE AERODROME (YPAD) RWY 23 TEMPORARY APPROACH PROCEDURES

3. WORKS

- 3.1 Works include construction of TWY L2 pavement, installation of aeronautical ground lighting and drainage works.
- 3.2 The displacement of RWY 05/23 will be in operation between 0600-2300 Local, commencing 31 March to 19 May 2025.
- 3.3 RWY 05/23 will be closed between 2300-0600 Local. Aircraft will be required to use RWY 12/30, commencing 31 March to 19 May 2025.
- 3.4 The TWY B2 hold point for RWY 05/23 will be temporarily repositioned to maintain clearance to the approach and takeoff splays associated with the displacement.
- 3.5 The TWY D2 hold point for RWY 05/23 will be temporarily repositioned to maintain clearance to the approach and takeoff splays associated with the displacement.
- 3.6 RWY 23 glidepath and high intensity approach lights will be unavailable.
- 3.7 RWY 23 displaced threshold will be marked with five (5) green lights each side of RWY 23 with RTIL commencing 31 March to 19 May 2025 HJ.
- 3.8 PAPI 3 DEG 58FT are installed for the RWY 23 displacement.
- 3.9 RWY 23 displaced runway end will be marked with three (3) red lights each side of RWY 23.
- 3.10 Aircraft will taxi for departure to the RWY 23 displaced runway end via green TWY centreline lighting.
- 3.11 Aircraft will taxi on arrival from the RWY 23 displaced runway end via alternating yellow and green TWY centreline lighting.
- 3.12 RWY 23 will be marked with enhanced touchdown zone markings consisting of two rows of four gable markers and green lights left hand side only RWY 23.
- 3.13 TWY E2 will be closed H24 commencing 18 March to 19 May 2025.

- 3.14 MAX aircraft size holding on TWY A6 at the TWY K intersection is SF34 aircraft.
- 3.15 MAX aircraft holding on TWY A6 at the TWY L intersection is A321/A320/B38M.

4. RWY 05/23 DETAILS

- 4.1 RWY 23 threshold displaced 1,158M.
- 4.2 RWY 23 SOT displaced 650M.
- 4.3 RWY 05 takeoff shortened by 650M.

| | TORA | TODA | ASDA | LDA |
|--------|------|--------------|------|------|
| RWY 05 | 2450 | 2450 (2%) | 2510 | 2298 |
| RWY 23 | 2450 | 2554 (2.63%) | 2510 | 1942 |

5. SUPPLEMENTARY TKOF DISTANCES

- 5.1 RWY 05- 2273(1.6) 2412(1.9)
- 5.2 RWY 23- 2216(1.6) 2379(1.9) 2475(2.2) 2533(2.5)

6. CANCELLATION

- 6.1 This SUP will be cancelled when TWY L2 construction in the RWY 05/23 flight strip is complete, expected end of May 2025.

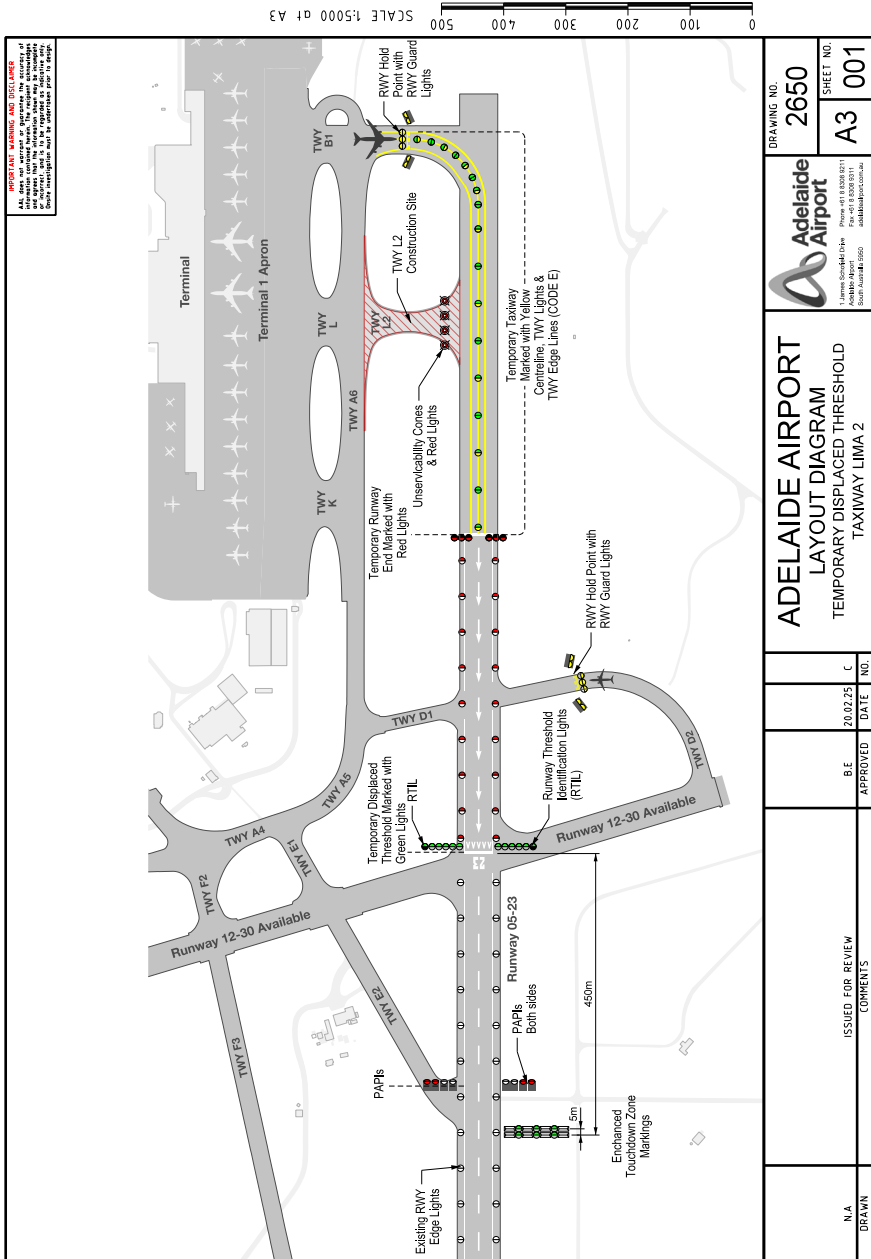
7. DISTRIBUTION

- 7.1 Airservices Australia website only.

Appendix

1. Temporary Displaced Threshold Taxiway Lima 2

1. Temporary Displaced Threshold Taxiway Lima 2



IMPORTANT WARNING AND DISCLAIMER
This drawing is a representation of the proposed works and does not constitute a contract. The contractor shall be responsible for verifying the accuracy of the information provided and for obtaining all necessary approvals. The contractor shall be responsible for ensuring that the works are completed in accordance with the approved plans and specifications. The contractor shall be responsible for ensuring that the works are completed in accordance with the approved plans and specifications.

| | | | | | | | | | |
|---------------|-------------------------------|------------------|------------------|----------|---|---|--|-------------|------|
| N.A. DRAWN | ISSUED FOR REVIEW COMMENTS | B.F. APPROVED | 20.02.25 DATE | C NO. | ADELAIDE AIRPORT LAYOUT DIAGRAM TEMPORARY DISPLACED THRESHOLD TAXIWAY LIMA 2 | Adelaide Airport | | DRAWING NO. | 2650 |
| | | | | | | 1 James St Adelaide SA 5000 Phone +61 8 83001021 Fax +61 8 83001022 South Australia 5000 adelaideairport.com.au | | SHEET NO. | A3 |

OFFICIAL

FILE: 1302000001-01_A1_1302000001-01_Taxiway_06-24_12-30_Supplement_13000001.dwg