

**AIP SUPPLEMENT  
(SUP)****AIRAC****H46/25****Effective: 202504161600 UTC**

AERONAUTICAL INFORMATION SERVICE,  
AIRSERVICES AUSTRALIA, GPO BOX 367,  
CANBERRA ACT 2601

For **DISTRIBUTION** queries, contact:  
Email: [aim\\_editorial@airservicesaustralia.com](mailto:aim_editorial@airservicesaustralia.com)

For **CONTENT** queries regarding this SUP, contact:  
Email: [ifp@airservicesaustralia.com](mailto:ifp@airservicesaustralia.com)

# CAIRNS AERODROME (YBCS) DAP STAR CHARTS

## 1. INTRODUCTION

- 1.1 This AIP SUP amends the AIP Departure and Approach Procedure (DAP) charts for three standard instrument arrival procedures for Cairns Aerodrome (YBCS).
- 1.2 This AIP SUP introduces additional arrival procedures for the CODIE, HENDO and UPOLO STAR charts.
- 1.3 The procedure number for the below STAR charts will also be amended with no change to the procedures:
  - STAR UPOLO ONE VICTOR ARRIVAL (RNAV)
  - STAR UPOLO ONE X-RAY ARRIVAL (RNAV)

## 2. IMPLEMENTATION

- 2.1 The procedures in the appendices become effective 202504161600 UTC and replace the same procedures published in DAP.
- 2.2 Recommended coding sheets for the procedures are available on request.

## 3. WAYPOINTS

- 3.1 There are no changes to waypoints.

## 4. CANCELLATION

- 4.1 This SUP will be cancelled when it is incorporated into AIP DAP, expected to be in DAP Amendment 184, effective 04 September 2025.

## 5. DISTRIBUTION

5.1 Airservices Australia website only.

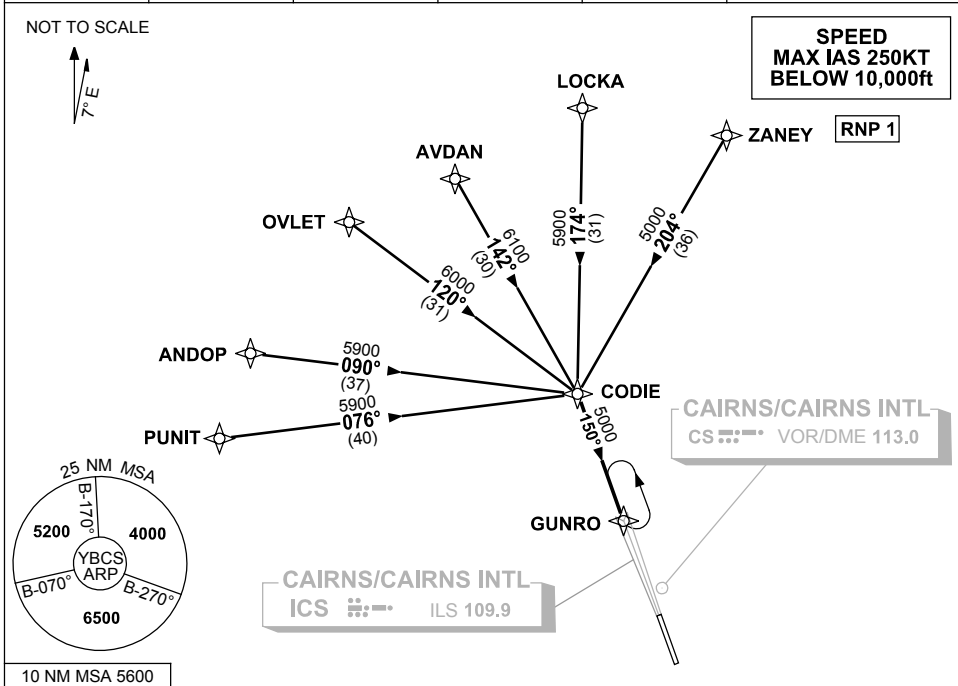
### Appendices

1. STAR CODIE ONE ALPHA X-RAY ZULU ARRIVALS (RNAV)
2. STAR HENDO TWO ALPHA YANKEE ARRIVALS (RNAV)
3. STAR UPOLO TWO ALPHA BRAVO ZULU ARRIVALS (RNAV)
4. STAR UPOLO TWO X-RAY ARRIVAL (RNAV)
5. STAR UPOLO TWO VICTOR ARRIVAL (RNAV)

**APPENDIX 1  
TO SUP H46/25**

**STANDARD INSTRUMENT ARRIVAL (STAR)  
CODIE ONE ALPHA X-RAY ZULU ARRIVALS (RNAV)  
CAIRNS/CAIRNS INTL, QLD (YBCS)**

ATIS 113.0 131.1	APP 118.4 126.1	TWR 124.9	SMC 121.7	Bearings are Magnetic Elevations in FEET AMSL
---------------------	--------------------	--------------	--------------	--



**TRANSITIONS:**

- ZANEY:** From ZANEY track 204° to CODIE
- LOCKA:** From LOCKA track 174° to CODIE
- AVDAN:** From AVDAN track 142° to CODIE
- OVLET:** From OVLET track 120° to CODIE
- ANDOP:** From ANDOP track 090° to CODIE
- PUNIT:** From PUNIT track 076° to CODIE

**FOLLOW ARRIVAL INSTRUCTIONS**

**ARRIVAL: CODIE ONE**

- RWY 15 ALPHA:** • From CODIE track 150° to GUNRO then via ILS RWY 15 or LOC RWY 15
- RWY 15 X-RAY:** • From CODIE track 150° to GUNRO then via RNP X RWY 15 (AR)
- RWY 15 ZULU:** • From CODIE track 150° to GUNRO then via RNP Y RWY 15 (LNAV/VNAV ONLY) or RNP Z RWY 15

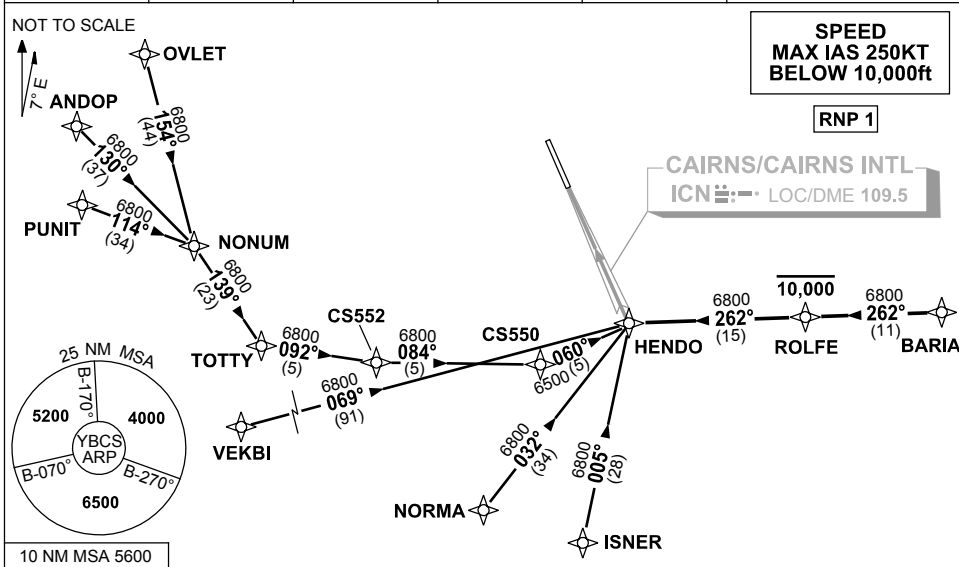
**COMMUNICATIONS FAILURE: PROCEDURE IN IMC  
IF ABLE CTC CS ATC ON TEL: (07) 3866 3533**

- Squawk 7600, comply with vertical navigation requirements, but not below MSA.
- Track via the latest STAR clearance to the nominated runway, then fly the most suitable approach in accordance with ERS A EMERG Section 1.5.

**APPENDIX 2  
TO SUP H46/25**

**STANDARD INSTRUMENT ARRIVAL (STAR)  
HENDO TWO ALPHA YANKEE ARRIVALS (RNAV)  
CAIRNS/CAIRNS INTL, QLD (YBCS)**

ATIS 113.0 131.1	APP 118.4 126.1	TWR 124.9	SMC 121.7		Bearings are Magnetic Elevations in FEET AMSL
---------------------	--------------------	--------------	--------------	--	--



**TRANSITIONS:**

- OVLET:** From OVLET to HENDO
- Track 154° to NONUM
  - Turn LEFT, track 139° to TOTTY
  - Turn LEFT, track 092° to CS552
  - Turn LEFT, track 084° to CS550
  - Turn LEFT, track 060° to HENDO
- ANDOP:** From ANDOP to HENDO
- Track 130° to NONUM
  - Turn RIGHT, track 139° to TOTTY
  - Turn LEFT, track 092° to CS552
  - Turn LEFT, track 084° to CS550
  - Turn LEFT, track 060° to HENDO
- VEKBI:** From VEKBI to HENDO
- Track 069° to HENDO

- PUNIT:** From PUNIT to HENDO
- Track 114° to NONUM
  - Turn RIGHT, track 139° to TOTTY
  - Turn LEFT, track 092° to CS552
  - Turn LEFT, track 084° to CS550
  - Turn LEFT, track 060° to HENDO
- NORMA:** From NORMA to HENDO
- Track 032° to HENDO
- ISNER:** From ISNER to HENDO
- Track 005° to HENDO
- BARIA:** From BARIA to HENDO
- Track 262° to ROLFE
  - **Cross** ROLFE AT or BLW 10,000ft
  - Track 262° to HENDO

**FOLLOW ARRIVAL INSTRUCTIONS**

**ARRIVAL: HENDO TWO**

- RWY 33 ALPHA:** From HENDO track via LOC RWY 33 approach
- RWY 33 YANKEE:** From HENDO track via RNP Y RWY 33 (AR) approach

**COMMUNICATIONS FAILURE: PROCEDURE IN IMC**

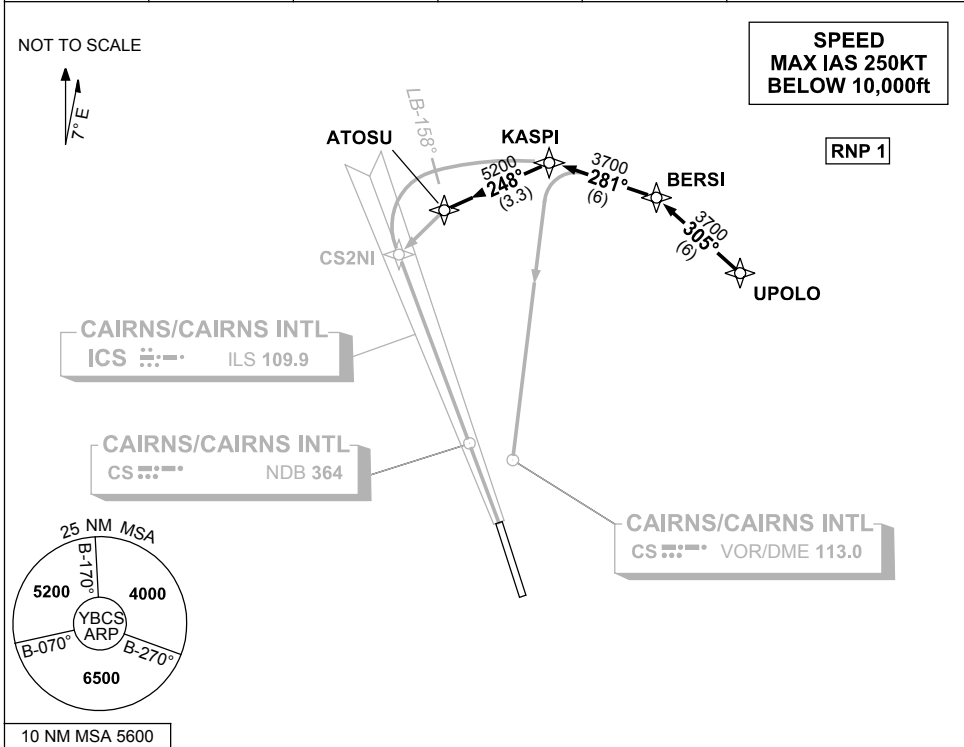
**IF ABLE CTC CS ATC ON TEL: (07) 3866 3533**

- Squawk 7600, comply with vertical navigation requirements, but not below MSA.
- Track via the latest STAR clearance to the nominated runway, then fly the most suitable approach in accordance with ERSA EMERG Section 1.5.

**APPENDIX 3  
TO SUP H46/25**

**STANDARD INSTRUMENT ARRIVAL (STAR)  
UPOLO TWO ALPHA, BRAVO, ZULU ARRIVALS (RNAV)  
CAIRNS/CAIRNS INTL, QLD (YBCS)**

ATIS 113.0 131.1	APP 118.4 126.1	TWR 124.9	SMC 121.7		Bearings are Magnetic Elevations in FEET AMSL
---------------------	--------------------	--------------	--------------	--	--



**ARRIVAL: UPOLO TWO**

- From UPOLO, track 305° to BERSI,
- Turn LEFT, track 281° to KASPI.

**RWY 15 ALPHA:** • From KASPI, track via ILS or LOC RWY 15

**RWY 15 BRAVO:** • From KASPI, track via NDB-A or VOR-A

**RWY 15 ZULU:** • From KASPI, track 248° to ATOSU for RNP Y RWY 15 (LNAV/VNAV ONLY) or RNP Z RWY 15

**COMMUNICATIONS FAILURE: PROCEDURE IN IMC  
IF ABLE CTC CS ATC ON TEL: (07) 3866 3533**

- Squawk 7600, comply with vertical navigation requirements, but not below MSA.
- Track via the latest STAR clearance to the nominated runway, then fly the most suitable approach in accordance with ERSA EMERG Section 1.5.

Changes: PROC NAME, Editorial. BCSSR08-SUP

**APPENDIX 4  
TO SUP H46/25**

**STANDARD INSTRUMENT ARRIVAL (STAR)  
UPOLO TWO X-RAY ARRIVAL (RNAV)  
CAIRNS/CAIRNS INTL, QLD (YBCS)**

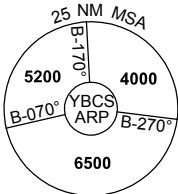
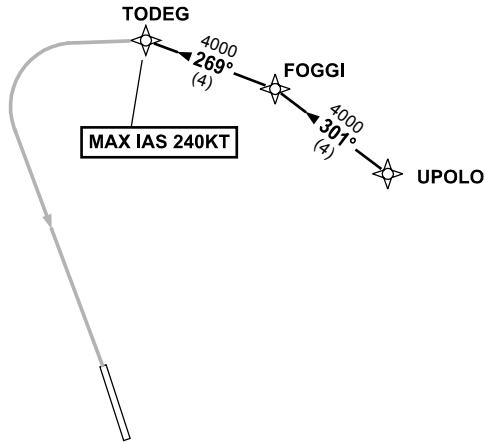
ATIS 113.0 131.1	APP 118.4 126.1	TWR 124.9	SMC 121.7		Bearings are Magnetic Elevations in FEET AMSL
---------------------	--------------------	--------------	--------------	--	--

NOT TO SCALE



**SPEED  
MAX IAS 250KT  
BELOW 10,000ft**

**RNP 1**



10 NM MSA 5600

**ARRIVAL:**

**UPOLO TWO**

**RWY 15 X-RAY:**

- From UPOLO track 301° to FOGGI,
- Track 269° to TODEG,  
then via RNP X RWY 15 (AR)  
MAX IAS 240KT from TODEG

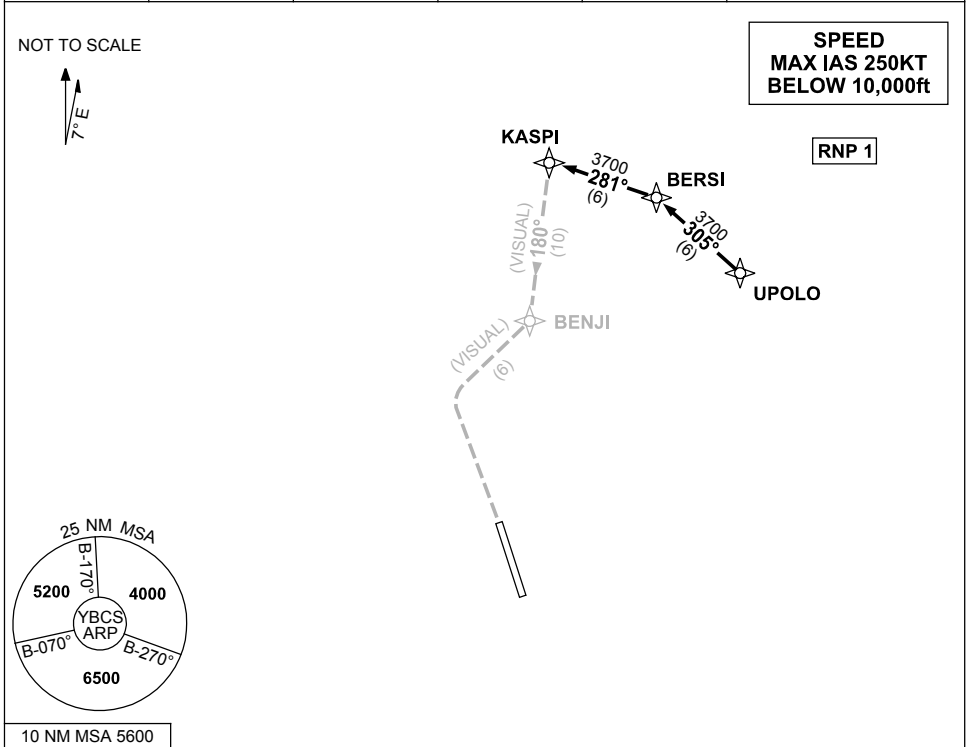
**COMMUNICATIONS FAILURE: PROCEDURE IN IMC  
IF ABLE CTC CS ATC ON TEL: (07) 3866 3533**

- Squawk 7600, comply with vertical navigation requirements, but not below MSA.
- Track via the latest STAR clearance to the nominated runway, then fly the most suitable approach in accordance with ERSA EMERG Section 1.5.

**APPENDIX 5  
TO SUP H46/25**

**STANDARD INSTRUMENT ARRIVAL (STAR)  
UPOLO TWO VICTOR ARRIVAL (RNAV)  
CAIRNS/CAIRNS INTL, QLD (YBCS)**

ATIS 113.0 131.1	APP 118.4 126.1	TWR 124.9	SMC 121.7		Bearings are Magnetic Elevations in FEET AMSL
---------------------	--------------------	--------------	--------------	--	--



**ARRIVAL:** **UPOLO TWO**

- From UPOLO, track 305° to BERSI
- Turn LEFT, track 281° to KASPI

**RWY 15 VICTOR:** • From KASPI, track 180° VISUAL to BENJI then track via "Creek Corridor" (Cairns NAP refers)

**COMMUNICATIONS FAILURE: PROCEDURE IN IMC  
IF ABLE CTC CS ATC ON TEL: (07) 3866 3533**

- Squawk 7600, comply with vertical navigation requirements, but not below MSA.
- Track via the latest STAR clearance to the nominated runway, then fly the most suitable approach in accordance with ERSA EMERG Section 1.5.