

**AIP SUPPLEMENT
(SUP)****H30/25****Effective: 202503301600 UTC**AERONAUTICAL INFORMATION SERVICE,
AIRSERVICES AUSTRALIA, GPO BOX 367,
CANBERRA ACT 2601For **DISTRIBUTION** queries, contact:
Email: aim_editorial@airservicesaustralia.comFor **CONTENT** queries regarding this SUP, contact:
Email: adf.airspace@defence.gov.au Phone: 02 6128 4858**TRA 'KOOMOLOO', SOUTH AUSTRALIA
31 MARCH – 25 MAY 2025****1. INTRODUCTION**

- 1.1 Defence flying activities will be conducted in the Flinders Ranges Region over the period 31 March – 25 May 2025.
- 1.2 This AIP SUP describes the airspace, timings, access and procedures associated with these activities.

2. AIRSPACE

- 2.1 Airspace users should refer to YMMM area NOTAM to confirm activation timings for the temporary restricted area.
- 2.2 The following Temporary Restricted Area (TRA) is established:

YMMM/TRA 'KOOMOLOO'

CONDITIONAL STATUS: RA2**MILITARY FLYING****LATERAL LIMITS:** 331740S 1392532E – 331809S 1394202E –
334136S 1394159E – 333813S 1391240E – 331740S 1392532E**VERTICAL LIMITS:** SFC - 4500FT**HOURS OF ACTIVITY:** NOTAM**CONTROLLING AUTHORITY:** Advanced Strategic Capabilities Accelerator
(ASCA) (0422 035 655)

- 2.3 TRA 'KOOMOOLOO' airspace activation. Expected activation periods for TRA 'KOOMOOLOO' are:

Date (Local)	Time (Local)	Time and Date (UTC)
31 MAR – 5 APR	0700 – 1900	2030 – 0830
6 – 13 APR	0700 – 1900	2130 – 0930
12 – 25 MAY	0700 – 1700	2130 – 0730

2.4 NOTAM

- 2.4.1 TRA (YMMM) NOTAM shall be issued to confirm activation timings. Timings may be amended or deactivated by NOTAM at short notice.
- 2.4.2 NOTAM will be issued at least 24 hours prior to activation.
- 2.5 General airspace enquiries prior to activation period can be made to the Joint Airspace Control Cell on (02) 6128 4857 during normal business hours (AEST) or via email adf.airspace@defence.gov.au.
- 2.6 During activation periods, contact ASCA on 0422 035 655 (primary) or 0417 759 776 (secondary) or via email asca.outreach@defence.gov.au

3. ACCESS TO EXERCISE AIRSPACE

- 3.1 Access to the restricted area by non-participant aircraft will generally not be available except for:
- Aircraft operating in the preservation of life or property (MEDEVAC, FFR, POL, SAR)
 - Aircraft with a declared emergency
 - Aircraft that pre-arrange clearance with the controlling authority by phone prior to take-off.
- 3.2 No ATS will be provided to aircraft requiring transit of TRA 'KOOMOOLOO'.
- 3.3 Should a flight noted above require transit of TRA 'KOOLOOMOO', contact with the controlling authority before departure is required to ensure that transit is available. When airborne, contact is to be made with the controlling authority on 126.7 to request transit clearance prior to entry.

4. CANCELLATION

4.1 This SUP self-cancels at 202505250730 UTC

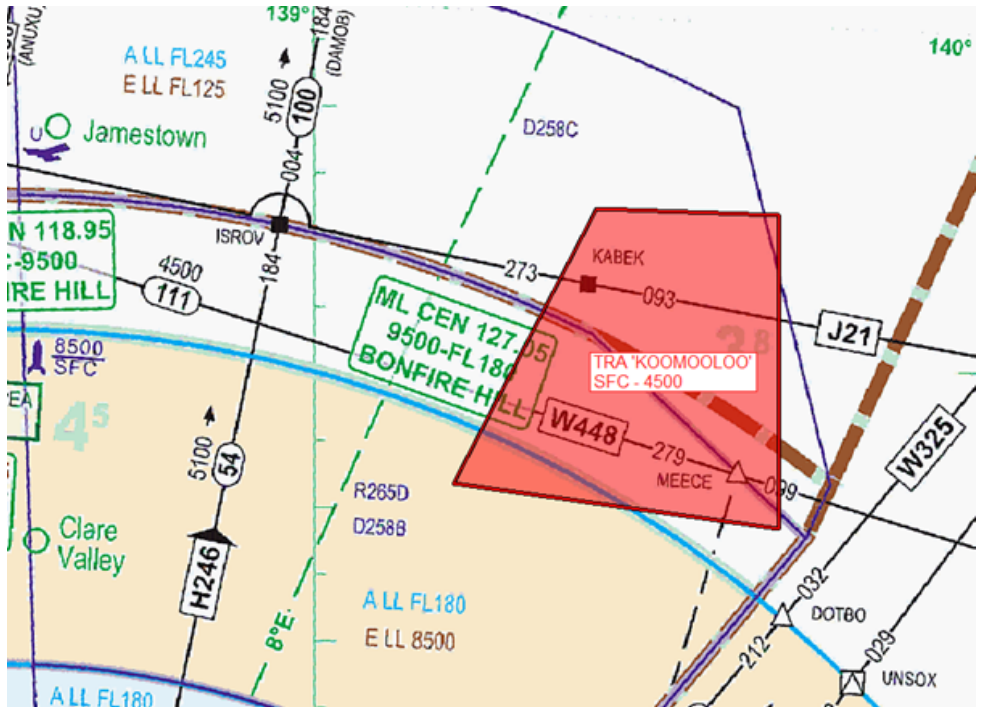
5. DISTRIBUTION

5.1 Airservices Australia website only.

Appendices

1. TRA 'KOOMOOLOO' – ENR Low
2. TRA 'KOOMOOLOO' – Low Flying Chart Day

1. TRA 'KOOMOLOO' – ENR Low



2. TRA 'KOOMOLOO' – Low Flying Chart Day

