

**AIP SUPPLEMENT
(SUP)**

AIRAC

H20/25

Effective: 202503191600 UTC

AERONAUTICAL INFORMATION SERVICE,
AIRSERVICES AUSTRALIA, GPO BOX 367,
CANBERRA ACT 2601

For **DISTRIBUTION** queries, contact:
Email: aim_editorial@airservicesaustralia.com

For **CONTENT** queries regarding this SUP, contact:
Email: bas@globalairspaceolutions.com

**SCHERGER (RAAF) AERODROME (YBSG)
NEW PROCEDURES**

1. INTRODUCTION

- 1.1 This AIP SUP introduces new procedures for Scherger (RAAF) Aerodrome (YBSG), replacing AIP SUP H15/25.

2. IMPLEMENTATION

- 2.1 The charts in the appendices become effective 202503191600 UTC.

3. WAYPOINTS

Waypoint	Latitude	Longitude	Approach Point
RW12	123656.20S	1420433.77E	MAPt RNP RWY 12
RW30	123748.31S	1420559.76E	MAPt RNP RWY 30
SV2EA	123957.61S	1421843.00E	RIGHT IAF RNP RWY 30
SV2EB	124542.74S	1421903.73E	STRAIGHT IAF RNP RWY 30
SV2EC	124759.86S	1421340.36E	LEFT IAF RNP RWY 30
SV2EF	124026.53S	1421021.00E	FAF RNP RWY 30
SV2EH	123510.01S	1420138.61E	MAWP RNP RWY 30
SV2EI	124304.68S	1421442.32E	IF RNP RWY 30
SV2WD	123446.20S	1415150.75E	RIGHT IAF RNP RWY 12
SV2WE	122900.98S	1415130.66E	STRAIGHT IAF RNP RWY 12
SV2WF	123417.87S	1420012.65E	FAF RNP RWY 12
SV2WG	122644.32S	1415653.87E	LEFT IAF RNP RWY 12
SV2WH	123934.45S	1420854.98E	MAWP RNP RWY 12
SV2WI	123139.47S	1415551.61E	IF RNP RWY 12

4. CANCELLATION

- 4.1 This SUP will be cancelled when it is incorporated into AIP DAP, expected to be in DAP Amendment 183, effective 12 JUN 2025

5. DISTRIBUTION

- 5.1 Airservices Australia website only.

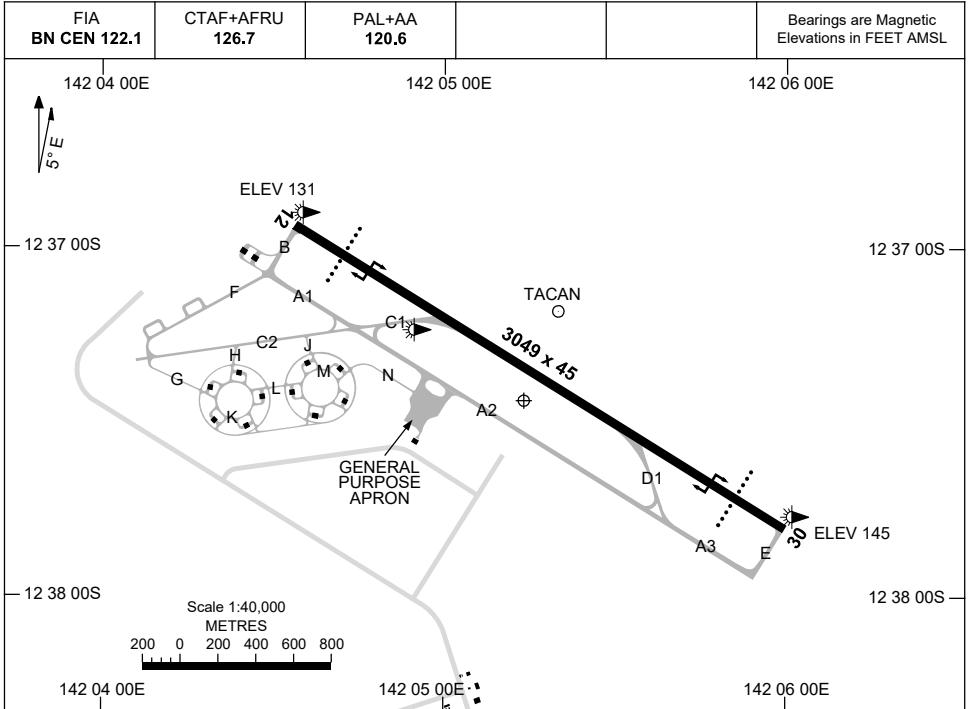
Appendices

1. Aerodrome Chart
2. RNP RWY 12
3. RNP RWY 30

**APPENDIX 1
TO SUP H20/25**

AD ELEV 145
12 37 26S 142 05 14E

**AERODROME CHART
SCHERGER, QLD (YBSG)**



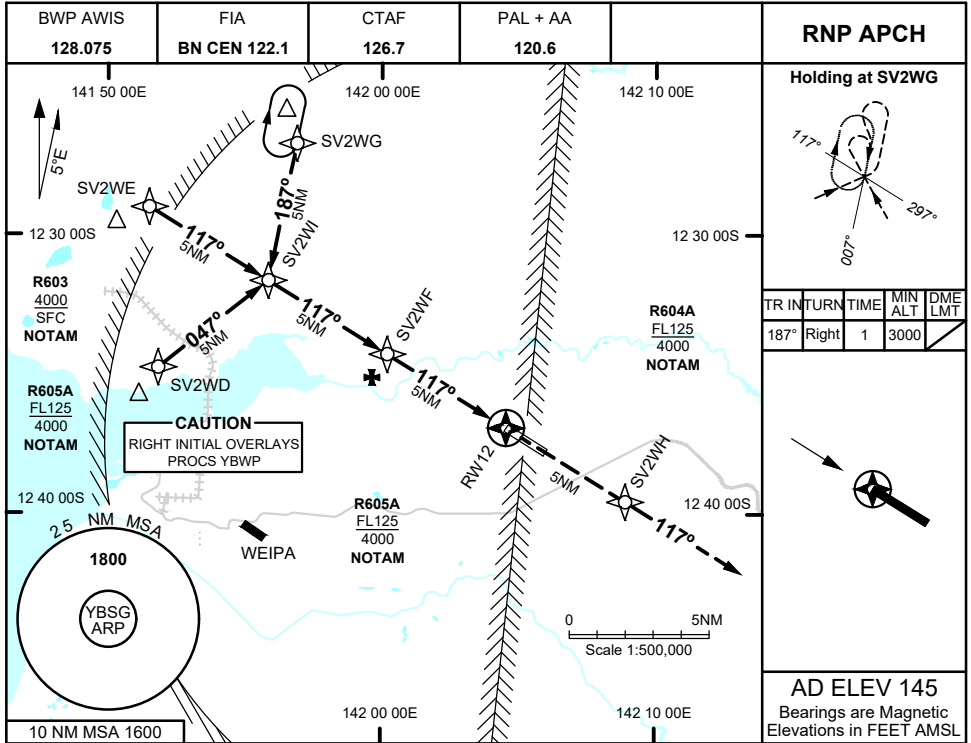
	AERODROME LIGHTING
RWY	TAXIWAY : NIL RL : SDBY PWR AVBL
12 ¹¹⁶	PAPI 3.0° 48FT RTIL MIRL
²⁹⁶ 30	PAPI 3.0° 48FT RTIL MIRL

NOTES

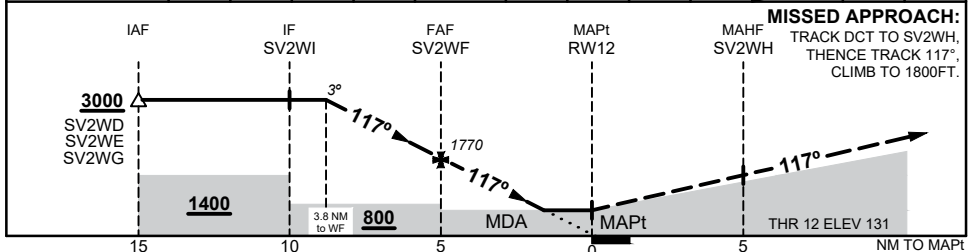
1. FIA FREQ 122.1 AVBL IN CIRCUIT AREA
2. AWIS PH 07 3564 3737

**APPENDIX 2
TO SUP H20/25**

**RNP RWY 12
SCHERGER, QLD (YBSG)**



NM TO NEXT WPT	3.8	3	2	1	SV2WF	4	3	2	1.5	RW12		
ALT (3° APCH PATH)	3000	2730	2410	2090	1770	1460	1140	820	670			



NOTES

- MAX IAS:
INITIAL : 210KTS
- BSG AWIS (PHONE)
07 3564 3737
- CAUTION:** PROC IN CLOSE PROXIMITY TO YBWP PROCS, PRESCRIBED ALTITUDES ENSURE SEPARATION

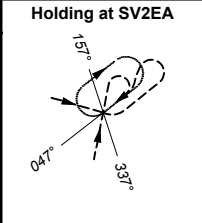
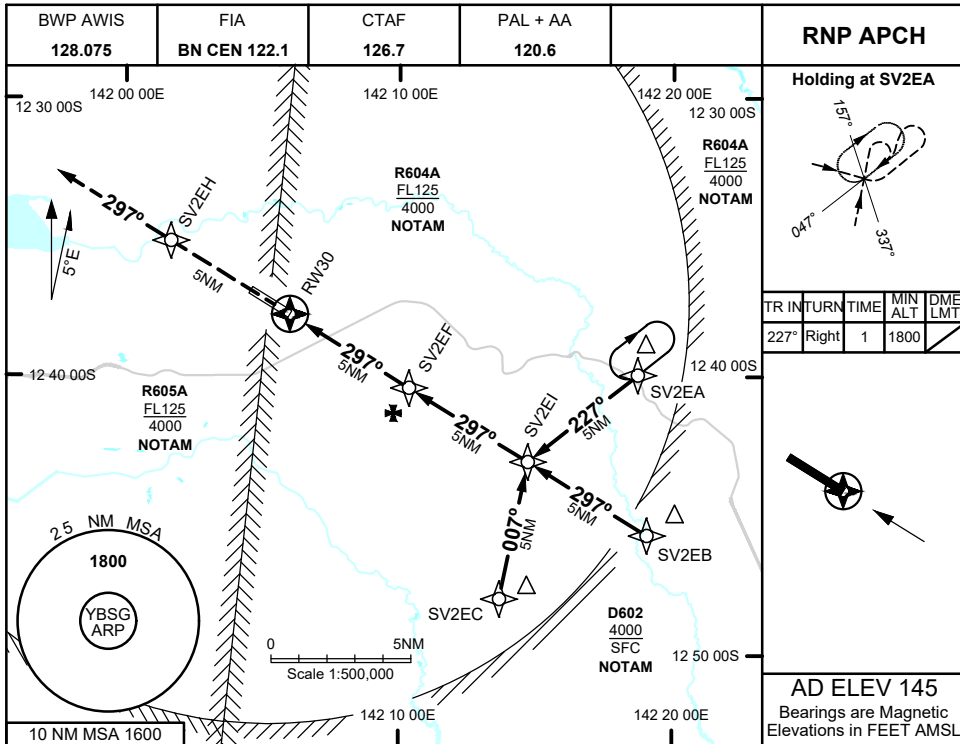
CATEGORY	A	B	C	D
LNAV using BWP QNH	600 (469 - 2.6)			
LNAV	670 (539 - 3.0)			
CIRCLING	770 (625 - 2.4)	890 (745 - 4.0)	940 (795 - 5.0)	
ALTERNATE	(1125 - 4.4)	(1245 - 6.0)	(1295 - 7.0)	

Changes: NEW PROCEDURE

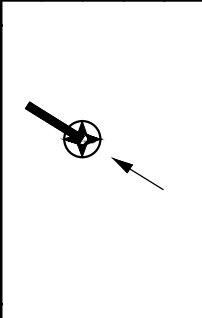
BSGGN01-SUP

**APPENDIX 3
TO SUP H20/25**

**RNP RWY 30
SCHERGER, QLD (YBSG)**

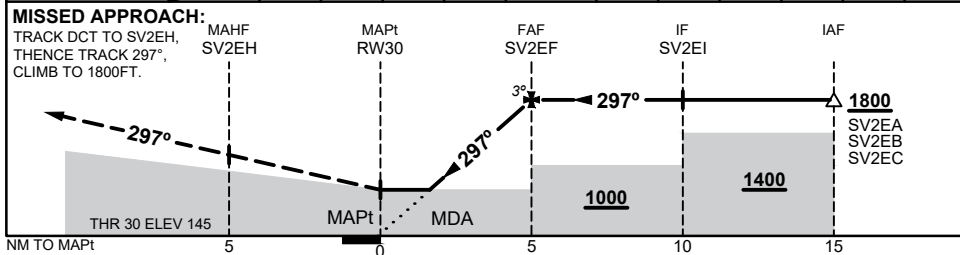


TR	INTURN	TIME	MIN ALT	DME LMT
227°	Right	1	1800	



AD ELEV 145
Bearings are Magnetic
Elevations in FEET AMSL

NM TO NEXT WPT	RW30	1.6	2	3	4	SV2EF					
ALT (3° APCH PATH)		710	830	1150	1470	1800					



NOTES

- MAX IAS:
INITIAL : 210KTS
- BSG AWIS (PHONE)
07 3564 3737
- CAUTION:** PROC IN CLOSE PROXIMITY TO YBWP PROCS, PRESCRIBED ALTITUDES ENSURE SEPARATION

CATEGORY	A	B	C	D
LNAV using BWP QNH	640 (495 - 2.8)			
LNAV	710 (565 - 3.2)			
CIRCLING	770 (625 - 2.4)	890 (745 - 4.0)	940 (795 - 5.0)	
ALTERNATE	(1125 - 4.4)	(1245 - 6.0)	(1295 - 7.0)	

Changes: NEW PROCEDURE

BSGGN02-SUP