

**AIP SUPPLEMENT
(SUP)****AIRAC****H18/25****Effective: 202503191600 UTC**

AERONAUTICAL INFORMATION SERVICE,
AIRSERVICES AUSTRALIA, GPO BOX 367,
CANBERRA ACT 2601

For **DISTRIBUTION** queries, contact:
Email: aim_editorial@airservicesaustralia.com

For **CONTENT** queries regarding this SUP, contact:
Email: ifp@airservicesaustralia.com

ADELAIDE AERODROME (YPAD) RWY 23 TEMPORARY APPROACH PROCEDURES

1. INTRODUCTION

- 1.1 This AIP SUP implements temporary approach procedures for RWY 23 at Adelaide Aerodrome (YPAD).
- 1.2 Adelaide Airport will be conducting taxiway works that require temporary threshold displacement of RWY 23 by 1,158M. A NOTAM will be issued to indicate when the threshold is displaced.
- 1.3 New RNP APCH, LOC APCH and VOR/DME APCH procedures have been designed for use when the RWY 23 threshold is displaced.

Note: RWY 23 approach visibility minima have been calculated based on HIAL not being available during the times of displaced threshold operations.
- 1.4 The existing STAR to RWY 23 procedures remain unchanged and will be used with the procedures in the appendices. DISREGARD APPROACH TRANSITION INSTRUCTION.
- 1.5 The existing SID procedures published in DAP remain available for use during periods of threshold displacement.
- 1.6 The following instrument approaches are not available when RWY 23 threshold is displaced:
 - RNP RWY 23
 - ILS-Y or LOC-Y RWY 23
 - ILS-Z or LOC-Z RWY 23
 - VOR RWY 23

- 1.7 Recommended coding sheets for these temporary procedures are available on request.

2. DISPLACED THRESHOLD

RWY	LAT	LONG	ELEV
RWY 23	345650.32S	1383200.69E	15FT

3. WAYPOINTS

Name	LAT	LONG	Use
PADNZ	345650.32S	1383200.69E	MAPT RNP T RWY 23

4. CANCELLATION

- 4.1 This SUP will be cancelled when the taxiway works are completed.

5. DISTRIBUTION

- 5.1 Airservices Australia website only.

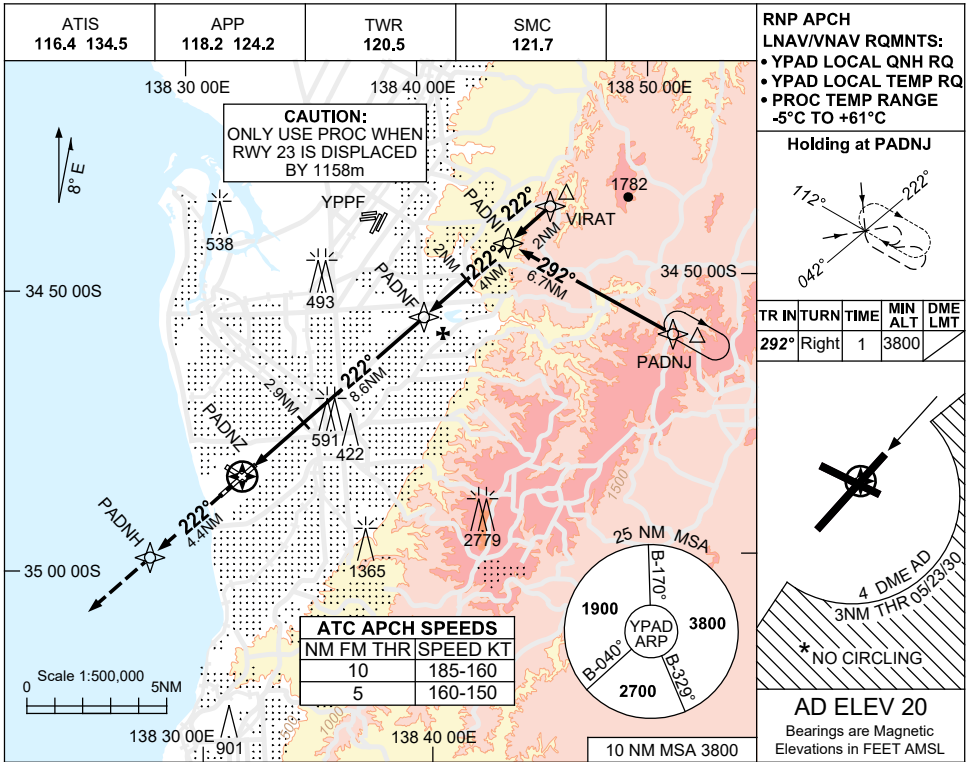
Appendices

1. RNP T RWY 23
2. LOC-T RWY 23
3. VOR-T RWY 23

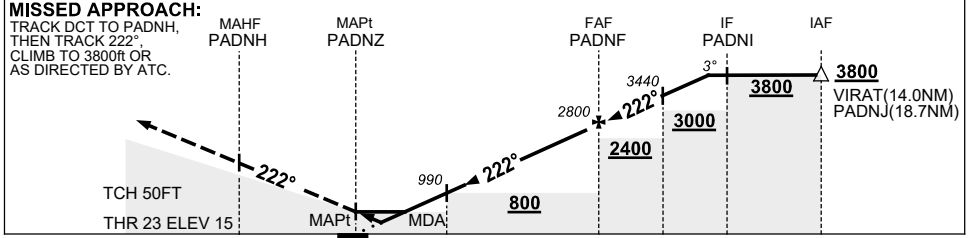
**APPENDIX 1
TO SUP H18/25**

USE QNH

**RNP T RWY 23
ADELAIDE, SA (YPAD)**



NM TO NEXT WP	PADNZ	1.1	1.4	2	2.9	3	4	5	6	7	PADNF	1	2	3.1
ALT (3° APCH PATH)		430	520	700	990	1020	1340	1660	1980	2290	2800	3120	3440	3800



NOTES

1. MAX IAS: INITIAL : 210KT.
2. NO CIRCLING SOUTH OF RWY 05/23 BEYOND 4 DME AD OR BEYOND 3NM FM THR 05/23/30.
3. HLDG MAY NOT BE CONTAINED IN CTA.
4. COLOUR: SEE SPEC NOTICES.

CATEGORY	A	B	C	D
LNAV/VNAV		430 (415-2.3)		
LNAV		520 (500-2.8)		
CIRCLING *	900 (880-2.4)		1000 (980-4.0)	1000 (980-5.0)
ALTERNATE	(1380-4.4)		(1480-6.0)	(1480-7.0)

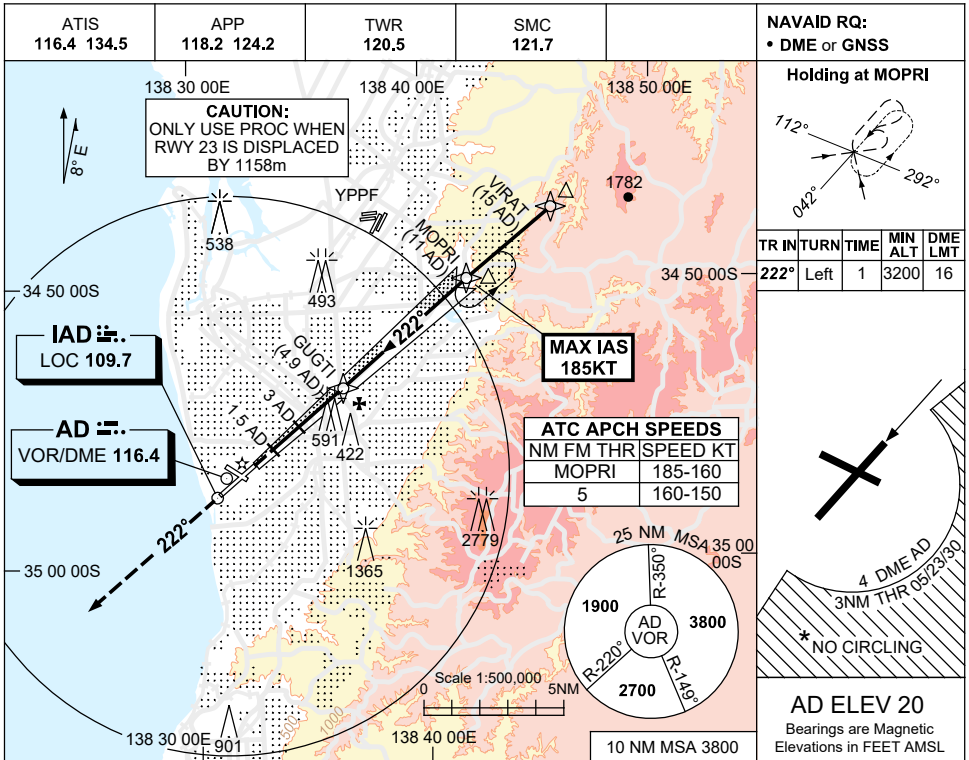
Changes: NEW PROC.

PADGN99-SUP

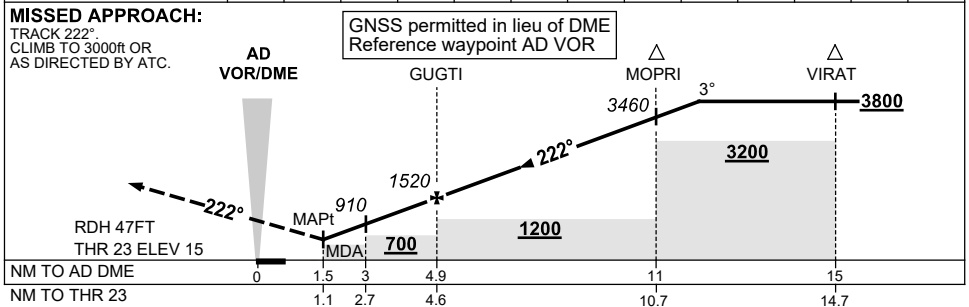
**APPENDIX 2
TO SUP H18/25**

USE QNH

**LOC-T RWY 23
ADELAIDE, SA (YPAD)**



NM TO AD DME	1.8	3	4	4.9	6	7	8	9	10	11	12.1	
ALT (3° APCH PATH)	520	910	1230	1520	1870	2190	2500	2830	3140	3460	3800	



CATEGORY	A	B	C	D/DL
S-I LOC	520 (500-2.8)			
CIRCLING*	900 (880-2.4)	1000 (980-4.0)	1000 (980-5.0)	
ALTERNATE*	(1380-4.4)	(1480-6.0)	(1480-7.0)	

- NOTES**
1. MAX IAS: MOPRI : 185KT.
 - *2. NO CIRCLING S OF RWY 05 / 23 BEYOND 4 DME AD OR BEYOND 3NM FM THR 05/23/30.
 - *3. SPECIAL ALTN MNM 850/4.0KM.
 4. COLOUR: SEE SPEC NOTICES.

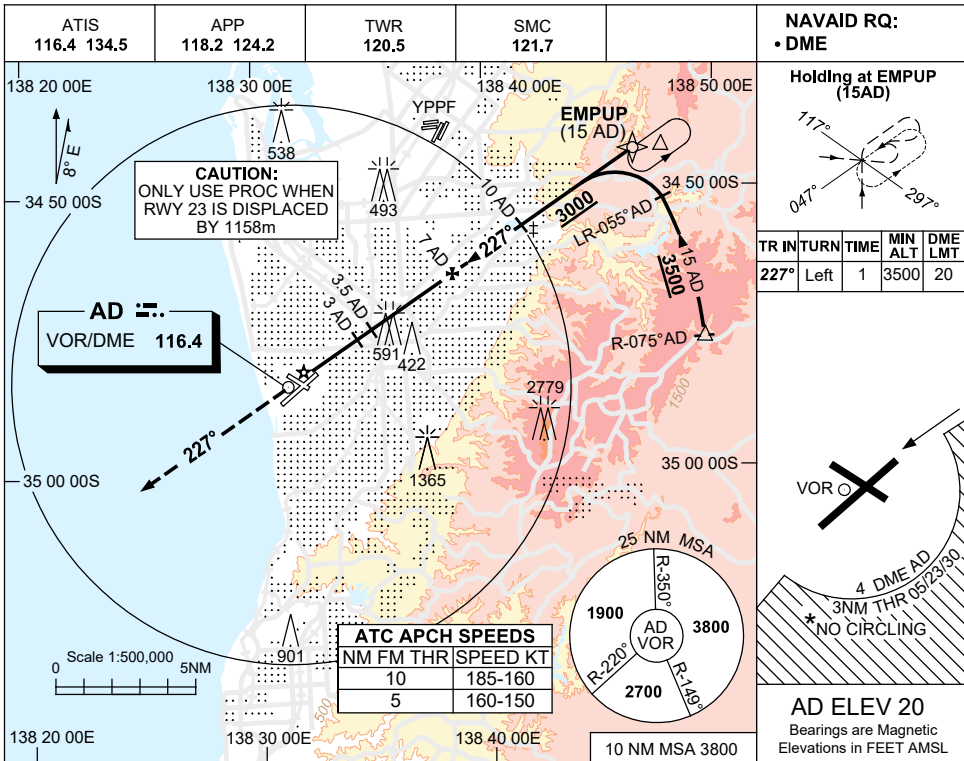
Changes: NEW PROC.

PADLZ99-SUP

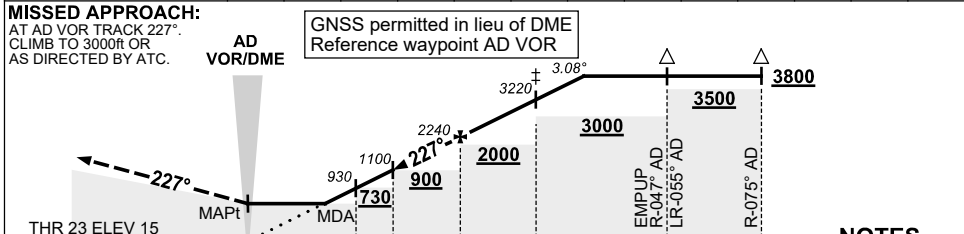
**APPENDIX 3
TO SUP H18/25**

USE QNH

**VOR-T RWY 23
ADELAIDE, SA (YPAD)**



DIST TO AD DME	1.9	3	3.5	4	5	6	7	8	9	10	11	11.4
ALT (3.08° APCH PATH)	580	930	1100	1260	1590	1910	2240	2570	2890	3220	3550	3800



- NOTES**
- *1. NO CIRCLING S OF RWY 05/23 BEYOND 4 DME AD OR BEYOND 3NM FM THR 05/23/30.
 - **2. SPECIAL ALTN MNM 850/4.0KM.
 - ‡3. ACFT MAY BE RADAR VECTORED TO 10 DME FINAL.
 - 4. APCH PATH ANGLE DOES NOT COINCIDE WITH PAPI ON GLIDE SLOPE INDICATION.
 - 5. COLOUR: SEE SPEC NOTICES.

CATEGORY	A	B	C	D
S-I VOR/DME	580 (560-3.1)			
CIRCLING *	900 (880-2.4)	1000 (980-4.0)	1000 (980-5.0)	
ALTERNATE**	(1380-4.4)	(1480-6.0)	(1480-7.0)	

Changes: NEW PROC.

PADVO99-SUP