

**AIP SUPPLEMENT
(SUP)****AIRAC****H14/25****Effective: 202503191600 UTC**AERONAUTICAL INFORMATION SERVICE,
AIRSERVICES AUSTRALIA, GPO BOX 367,
CANBERRA ACT 2601For **DISTRIBUTION** queries, contact:
Email: aim_editorial@airservicesaustralia.comFor **CONTENT** queries regarding this SUP, contact:
Email: bas@globalairspaceolutions.com**WOOMERA AERODROME (YPWR)
NEW PROCEDURE****1. INTRODUCTION**

- 1.1 This AIP SUP introduces a new procedure for Woomera Aerodrome (YPWR).

2. IMPLEMENTATION

- 2.1 The chart in the appendix becomes effective 202503191600 UTC.

3. WAYPOINTS

Waypoint	Latitude	Longitude	Approach Point
PW3SB	312132.20S	1365245.25E	RIGHT IAF RNP RWY 36
PW3SE	312420.46S	1364654.29E	STRAIGHT IAF RNP RWY 36
PW3SF	311422.21S	1364805.38E	FAF RNP RWY 36
PW3SG	312034.85S	1364150.19E	LEFT IAF RNP RWY 36
PW3SH	310623.60S	1364902.11E	MAWP RNP RWY 36
PW3SI	311921.33S	1364729.86E	IF RNP RWY 36
RW36	310923.08S	1364840.85E	MAPt RNP RWY 36

4. CANCELLATION

- 4.1 This SUP will be cancelled when it is incorporated into AIP DAP, expected to be in DAP Amendment 183, effective 12 JUN 2025.

5. DISTRIBUTION

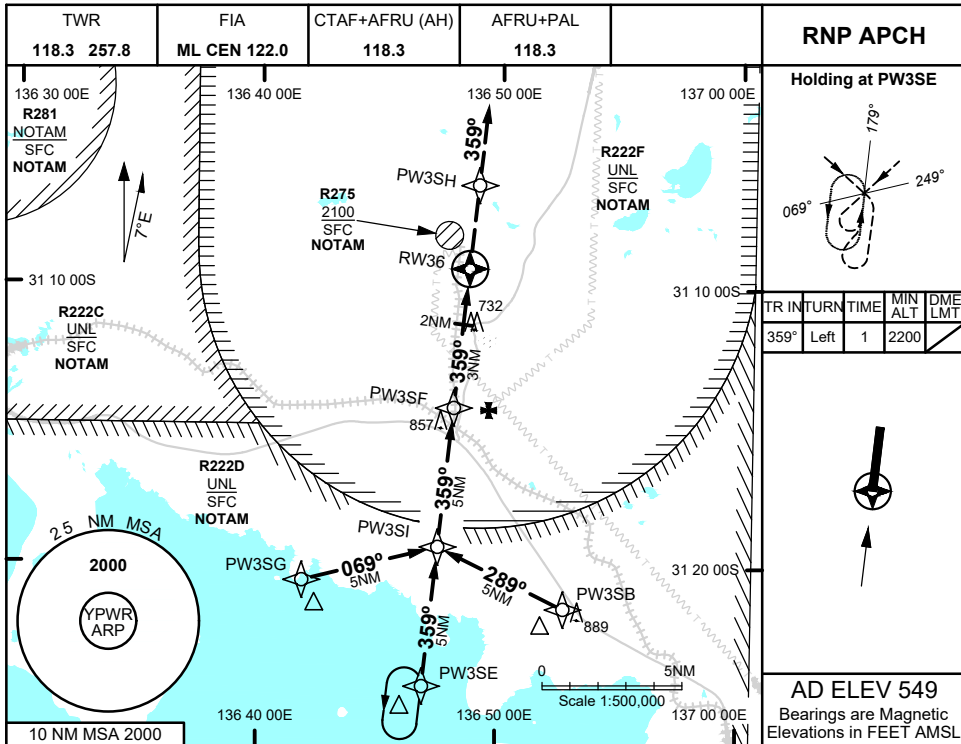
5.1 Airservices Australia website only.

Appendix

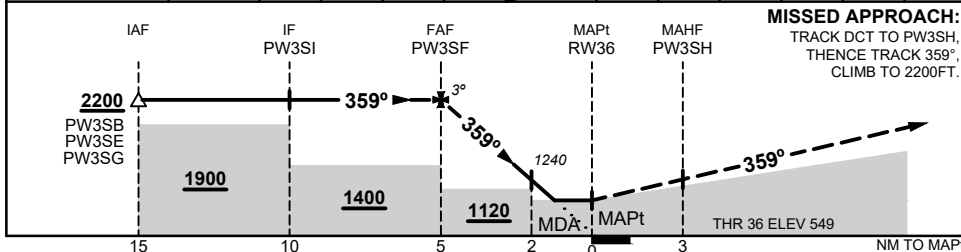
1. RNP RWY 36

**APPENDIX 1
TO SUP H14/25**

**RNP RWY 36
WOOMERA, SA (YPWR)**



NM TO NEXT WPT	PW3SF	4	3	2	1.5	RW36				
ALT (3° APCH PATH)	2200	1870	1550	1240	1080					



NOTES

1. MAX IAS:
INITIAL : 210KTS
2. AWIS (PHONE)
08 8150 3820
3. PROCEDURE NOT AVAILABLE WHEN R222D, R222F OR R275 ACTIVE

CATEGORY	A	B	C	D
LNAV	1080 (531 - 3.0)			
CIRCLING	1190 (641 - 2.4)		1250 (701 - 4.0) 1340 (791 - 5.0)	
ALTERNATE	(1141 - 4.4)		(1201 - 6.0) (1291 - 7.0)	

Changes: NEW PROCEDURE

PWRGN02-SUP