

**AIP SUPPLEMENT
(SUP)****H119/25****Effective: 202507072230 UTC**

AERONAUTICAL INFORMATION SERVICE,
AIRSERVICES AUSTRALIA, GPO BOX 367,
CANBERRA ACT 2601

For **DISTRIBUTION** queries, contact:
Email: aim.editorial@airservicesaustralia.com

For **CONTENT** queries regarding this SUP, contact:
Email: adf.airspace@defence.gov.au

NORTHERN AUSTRALIAN EXERCISE PERIOD 08 – 26 JULY 2025

1. INTRODUCTION

- 1.1 This AIP cancels and replaces SUP H111/25 with an amendment to para 2.7.1.
- 1.2 Elements of the Australian Defence Force will be conducting a variety of activities throughout the Northern Territory and Western Australia over the period 08 – 26 JUL 2025 as part of the Northern Australian Exercise Period.
- 1.3 The Northern Australian Exercise Period is a large scale military activity, involving a wide range of tactical flying and live fire operations across the Northern Territory and Western Australia.
- 1.4 This AIP SUP describes a number of airspace configurations, which will comprise of temporary and permanent Special Use Airspace (SUA) activations. The SUP will also detail Class G operations, airspace access, diversion routes, priorities and other procedures associated with these activities.
- 1.5 This AIP SUP will divide the activities into four distinct categories as follows:
 - 1.5.1 RAAF Curtin activities
 - 1.5.2 Large Force Employment (LFE)
 - 1.5.3 Live Fire Exercise (LFX); and
 - 1.5.4 Extant SUA activations.

2. AIRSPACE

2.1 RAAF Curtin activities.

- 2.1.1 Throughout the activity period, extant restricted airspaces at RAAF Curtin may be activated to support activities in the vicinity of the aerodrome. In order to reduce impact upon non-participant aircraft at Derby Aerodrome (YDBY), R801 will be partially activated with reduced lateral dimensions in accordance with the following:

R801 – Partial activation

Conditional Status: RA2

Military Flying

Lateral Limits: 172710S 1234151E – 172910S 1240154E – 173133S 1241659E then along the clockwise arc of a circle radius 25.00NM centre 173520S 1235107E (CIN/DME) – 173120S 1232517E – 172710S 1234151E

Vertical Limits: SFC - 3500

Hours of Activity: NOTAM

Controlling Authority: 44WG MOBILE AIR OPERATIONS TEAM (MAOT)
0492 178 588, ycin.atc@defence.gov.au

- 2.2 Activation of R801 partial and R802A can be expected on an ad hoc basis for the provision of ATS to support military departures and arrivals throughout the activity period. Airspace users shall consult Curtin Aerodrome (YCIN) and CNX NOTAM to confirm activation timings.
- 2.3 For CNX activations outside of the AIP SUP dates, normal NOTAM processes apply and users should consult contact details listed in the NOTAM.
- 2.4 **LFE Airspace.**
- 2.4.1 Two separate airspace configurations will be utilised between the 8-18 JUL to facilitate LFE activities. These two configurations, Configuration Alpha and Configuration Bravo, have been devised to provide clarity on the lateral boundaries of activated airspace and the associated diversion routes for non-participant aircraft. Only one configuration will be activated at any one time with no overlap.
- 2.4.2 Airspace users should refer to both local area (DSX, TNX and CNX) and Brisbane FIR (YBBB) NOTAM to confirm vertical limits and activation timings for permanent and temporary SUA.

2.5 AIRSPACE CONFIGURATION ALPHA

2.5.1 Configuration Alpha uses the following permanent and temporary SUA (Image contained in Appendix 1):

AIRSPACE CONFIGURATION ALPHA (8-18 JULY)		
Airspace	Vertical Limits	Controlling Authority
R262A Partial (see para 2.5.2)	8500 – FL600	FLTCDR 452SQN DARWIN
R262BC	8500 – FL600	FLTCDR 452SQN DARWIN
R225ABCDEF	9500 – FL600	FLTCDR 452SQN TINDAL
R241	8500 – FL600	FLTCDR 452SQN TINDAL
R244	4000 – 9500	FLTCDR 452SQN TINDAL
R245	9500 – FL600	FLTCDR 452SQN TINDAL
R247	4000 – 9500	FLTCDR 452SQN TINDAL
R248	4000 – 9500	FLTCDR 452SQN TINDAL
R250	SFC – 9500	FLTCDR 452SQN TINDAL
R253	8500 – FL600	FLTCDR 452SQN TINDAL
R268	SFC – FL600	Army RCO BFTA
R269	SFC – FL600	Army RCO BFTA
R270	SFC – FL600	Army RCO BFTA
D209	SFC – 2500	FLTCDR 452SQN TINDAL
D210	SFC – BCTA	FLTCDR 452SQN TINDAL
D223	SFC – 8500	FLTCDR 452SQN TINDAL
D229	SFC – 8500	FLTCDR 452SQN TINDAL
D236AB	SFC - 3000	Army RCO BFTA
M263EFG Partial (see para 2.5.2)	8500 – FL600	FLTCDR 452SQN DARWIN
R801 Partial (see para 2.1)	SFC – 3500	44WG MAOT
R802A	3500 – FL200	44WG MAOT
R803AB Partial (see para 2.5.2)	5500 – FL360	DEFENCE JACC
M821AB Partial (see para 2.5.2)	FL125 – FL360	DEFENCE JACC

D813 Partial (see para 2.5.2)	SFC – 5500	DEFENCE JACC
D817 Partial (see para 2.5.2)	SFC – FL125	DEFENCE JACC
TRA ‘GRIT’ (see para 2.5.3)	10000 – FL360	DEFENCE JACC
TMOA ‘PUCK’ (see para 2.5.3)	10000 – FL600	DEFENCE JACC
TDA ‘BOVINE’(see para 2.5.3)	SFC – 10000	DEFENCE JACC

2.5.2 Configuration Alpha Partial SUA definitions:

R262A Partial

Conditional Status: RA2

Military Flying

Lateral Limits: 125549S 1302738E then along the counter clockwise arc of a circle radius 40.00NM centre 122524S 1305423E (DN/DME) – 130327S 1304117E – 134106S 1302655E then along the clockwise arc of a circle radius 80.00NM centre 122524S 1305423E (DN/DME) – 132616S 1300054E – 125549S 1302738E

Vertical Limits: 8500 – FL600

Hours of Activity: NOTAM

Controlling Authority: FLTCDR 452SQN DARWIN

M263EFG Partial

Military Flying

Lateral Limits: 125232S 1302413E then along the counter clockwise arc of a circle radius 40.00NM centre 122524S 1305423E (DN/DME) – 125549S 1302738E – 143432S 1290013E then along the clockwise arc of a circle radius 170.00NM centre 122524S 1305423E (DN/DME) - 141552S 1284126E – 125232S 1302413E

Vertical Limits: 8500 – FL600

Hours of Activity: NOTAM

Administering Authority: FLTCDR 452SQN DARWIN

R803AB Partial**Conditional Status:** RA2**Military Flying**

Lateral Limits: 165314S 1245620E – then along the clockwise arc of a circle radius 75.00NM centre 173520S 1235107E (CIN/VOR) – 181553S 1245723E – 174857S 1241306E then along the counter clockwise arc of a circle radius 25.00NM centre 173520S 1235107E (CIN/VOR) – 172105S 1241252E – 165314S 1245620E

Vertical Limits: 5500 – FL360**Hours of Activity:** NOTAM**Controlling Authority:** DEFENCE JACC**M821AB Partial****Military Flying**

Lateral Limits: 165314S 1245620E – 161045S 1260034E then along the clockwise arc of a circle radius 150.00NM centre 173520S 1235107E (CIN/VOR) – 185558S 1260413E – 181553S 1245723E then along the counter clockwise arc of a circle radius 75.00NM centre 173520S 1235107E (CIN/VOR) – 165314S 1245620E

Vertical Limits: FL125 – FL360**Hours of Activity:** NOTAM**Administering Authority:** DEFENCE JACC

D813 Partial**Military Flying**

Lateral Limits: 165314S 1245620E – then along the clockwise arc of a circle radius 75.00NM centre 173520S 1235107E (CIN/VOR) – 181553S 1245723E – 174857S 1241306E then along the counter clockwise arc of a circle radius 25.00NM centre 173520S 1235107E (CIN/VOR) – 172105S 1241252E – 165314S 1245620E

Vertical Limits: SFC – 5500

Hours of Activity: NOTAM

Contact: DEFENCE JACC

D817 Partial**Military Flying**

Lateral Limits: 165314S 1245620E – 161045S 1260034E then along the clockwise arc of a circle radius 150.00NM centre 173520S 1235107E (CIN/VOR) – 185558S 1260413E – 181553S 1245723E then along the counter clockwise arc of a circle radius 75.00NM centre 173520S 1235107E (CIN/VOR) – 165314S 1245620E

Vertical Limits: SFC – FL125

Hours of Activity: NOTAM

Contact: DEFENCE JACC

- 2.5.3 The following Temporary Restricted Area (TRA), Temporary Military Operating Area (TMOA) and Temporary Danger Area (TDA) are established for Configuration Alpha:

YBBB/TRA 'GRIT'

Conditional Status: RA2

Military Flying

Lateral Limits: 161045S 1260034E – 183632S 1280608E – 185558S 1260413E then along counter clockwise arc of a circle radius 150.00NM centre 173520S 1235107E (CIN/VOR) – 161045S 1260034E

Vertical Limits: 10000 – FL360

Hours of Activity: NOTAM

Controlling Authority: DEFENCE JACC

YBBB/TMOA 'PUCK'

Military Flying

Lateral Limits: 161045S 1260034E – 141552S 1284126E then along the counter clockwise arc of a circle radius 170.00NM centre 122524S 1305423E (DN/DME) – 143432S 1290013E – 161640S 1285943E – 164430S 1291048E – 170146S 1294313E – 180000S 1313548E – 183632S 1280608E – 161045S 1260034E

Vertical Limits: 10000 – FL600

Hours of Activity: NOTAM

Administering Authority: DEFENCE JACC

YBBB/TDA ‘BOVINE’

Military Flying

Lateral Limits: 161045S 1260034E – 141552S 1284126E then along the counter clockwise arc of a circle radius 170.00NM centre 122524S 1305423E (DN/DME) – 143432S 1290013E – 161640S 1285943E – 164430S 1291048E – 170146S 1294313E – 180000S 1313548E – 185558S 1260413E then along counter clockwise arc of a circle radius 150.00NM centre 173520S 1235107E (CIN/VOR) – 161045S 1260034E

Vertical Limits: SFC – 10000

Hours of Activity: NOTAM

Contact: DEFENCE JACC

2.6 AIRSPACE CONFIGURATION BRAVO

2.6.1 Configuration Bravo uses the following permanent and temporary SUA (Image contained in Appendix 2):

AIRSPACE CONFIGURATION BRAVO (14-17 JULY)		
Airspace	Vertical Limits	Controlling Authority
R262A Partial (See para 2.6.3)	FL200 – FL360	FLTCDR 452SQN DARWIN
R262BC	FL200 – FL360	FLTCDR 452SQN DARWIN
R225ABCDEF	FL200 – FL360	FLTCDR 452SQN TINDAL
M263EFG Partial (See para 2.6.3)	FL200 – FL360	FLTCDR 452SQN DARWIN
R241	10000 – FL360	FLTCDR 452SQN TINDAL
R253	10000 – FL360	FLTCDR 452SQN TINDAL
D223	SFC – 8500	FLTCDR 452SQN TINDAL
D229	SFC – 8500	FLTCDR 452SQN TINDAL
R801 Partial (See para 2.1)	SFC – 3500	44WG MAOT
R802AB	3500 – FL600	44WG MAOT
R803AB	5500 – FL600	DEFENCE JACC
R806AB Partial (See para 2.6.4)	5500 – FL600	DEFENCE JACC
M821AB	FL125 – FL600	DEFENCE JACC
M823AB Partial (See para 2.6.4)	FL125 – FL600	DEFENCE JACC
M824	5000 – FL600	DEFENCE JACC

D813	SFC – 5500	DEFENCE JACC
D816 Partial (See para 2.6.4)	SFC – 5500	DEFENCE JACC
D817	SFC – FL125	DEFENCE JACC
D820 Partial (See para 2.6.4)	SFC – FL125	DEFENCE JACC
TMOA 'PUCK' (See para 2.6.2)	10000 – FL600	DEFENCE JACC
TMOA 'PROSPECT' (see para 2.6.5)	10000 – FL600	DEFENCE JACC
TRA 'GRIT' (see para 2.6.3)	10000 – FL600	DEFENCE JACC
TDA 'BOVINE' (See para 2.6.2)	SFC – 10000	DEFENCE JACC
TDA 'VERMILLION'(see para 2.6.5)	SFC – 10000	DEFENCE JACC

2.6.2 The following Configuration Bravo temporary airspace volumes have the same vertical and lateral dimensions as is noted in para 2.5.3:

- a) TMOA 'PUCK'
- b) TDA 'BOVINE'

2.6.3 The following Configuration Bravo airspaces have different vertical limits with the same lateral limits as those listed in para 2.5.2 – 2.5.3:

- a) TRA 'GRIT' – 10000 – FL600 (para 2.5.3)
- b) R262A Partial – FL200 – FL360 (para 2.5.2)
- c) M263EFG Partial – FL200-FL360 (para 2.5.2)

2.6.4 The following partial airspace dimensions will be utilised for Configuration Bravo:

R806AB Partial

Conditional Status: RA2

Military Flying

Lateral Limits: 171731S 1223454E then along the clockwise arc of a circle radius 75.00NM centre 173520S 1235107E (CIN/VOR) – 162006S 1235441E – 171015S 1235215E then along the counter clockwise arc of a circle radius 25.00NM centre 173520S 1235107E (CIN/VOR) – 173412S 1232458E – 171731S 1223454E

Vertical Limits: 5500 – FL600

Hours of Activity: NOTAM

Controlling Authority: DEFENCE JACC

M823AB Partial

Military Flying

Lateral Limits: 170428S 1215617E – 150457S 1235817E – 162006S 1235441E then along the counter clockwise arc of a circle radius 75.00NM centre 173520S 1235107E (CIN/VOR) – 171731S 1223454E – 170428S 1215617E

Vertical Limits: FL125 – FL600

Hours of Activity: NOTAM

Administering Authority: DEFENCE JACC

D816 Partial**Military Flying**

Lateral Limits: 171731S 1223454E then along the clockwise arc of a circle radius 75.00NM centre 173520S 1235107E (CIN/VOR) – 162006S 1235441E – 171015S 1235215E then along the counter clockwise arc of a circle radius 25.00NM centre 173520S 1235107E (CIN/VOR) – 173412S 1232458E – 171731S 1223454E

Vertical Limits: SFC - 5500

Hours of Activity: NOTAM

Contact: DEFENCE JACC

D820 Partial**Military Flying**

Lateral Limits: 170428S 1215617E – 150457S 1235817E – 162006S 1235441E then along the counter clockwise arc of a circle radius 75.00NM centre 173520S 1235107E (CIN/VOR) – 171731S 1223454E – 170428S 1215617E

Vertical Limits: SFC – FL125

Hours of Activity: NOTAM

Contact: DEFENCE JACC

2.6.5 The following TMOA and TDA will be activated during Configuration Bravo:

YBBB/TMOA 'PROSPECT'**Military Flying**

Lateral Limits: 140427S 1225624E – 141552S 1284126E – 161045S 1260034E then along the counter clockwise arc of a circle radius 150.00NM centre 173520S 1235107E (CIN/VOR) – 150452S 1235812E – 140427S 1225624E

Vertical Limits: 10000 – FL600

Hours of Activity: NOTAM

Administering Authority: DEFENCE JACC

YBBB/TDA ‘VERMILLION’

Military Flying

Lateral Limits: 140427S 1225624E – 141552S 1284126E – 161045S 1260034E then along the counter clockwise arc of a circle radius 150.00NM centre 173520S 1235107E (CIN/VOR) – 150452S 1235812E – 140427S 1225624E

Vertical Limits: SFC – 10000

Hours of Activity: NOTAM

Contact: DEFENCE JACC

2.7 LFE Airspace Activation Timings

2.7.1 LFE airspace activations will be in accordance with the following table:

Airspace Configuration Alpha Activation Timings		
DATE	TIME (LOCAL)	TIME (UTC)
08-10 JUL 25	0800 – 1200 (ACST) 0630 – 1030 (AWST)	2230 – 0230
	1330 – 1730 (ACST) 1200 – 1600 (AWST)	0400 – 0800
11 JUL 25	0800 – 1200 (ACST) 0630 – 1030 (AWST)	2230 – 0230
14-17 JUL 25	1700 – 2200 (ACST) 1530 – 2030 (AWST)	0730 – 1230
18 JUL 25	1000 – 1500 (ACST) 0830 – 1330 (AWST)	0030 – 0530
Airspace Configuration Bravo Activation Timings		
DATE	TIME (LOCAL)	TIME (UTC)
14-17 JUL 25	1000 – 1500 (ACST) 0830 – 1330 (AWST)	0030 – 0530

2.8 LFX Airspace

2.8.1 Three separate live fire activities will be conducted throughout the activity period with airspace configurations developed to safely segregate dangerous activities from non-participants; these are Configuration Emerald, Configuration Lollipop and Configuration Ruby.

2.9 AIRSPACE CONFIGURATION EMERALD

2.9.1 Airspace Configuration Emerald uses the following permanent and temporary SUA (Image contained in Appendix 3):

AIRSPACE CONFIGURATION EMERALD (15-16 JULY)		
Airspace	Vertical Limits	Controlling Authority
R268	SFC – UNL	Army RCO BFTA
R269	SFC – UNL	Army RCO BFTA
R270	SFC – UNL	Army RCO BFTA
M263CDGF	SFC – UNL	FLTCDR 452SQN DARWIN
TRA 'EMERALD' (see para 2.10)	SFC – UNL	Department of Defence

2.10 The following TRA is established for Configuration Emerald:

YBBB/TRA 'EMERALD'

Conditional Status: RA2

Military Flying/Non-Flying

Lateral Limits: 141437S 1291800E – 144929S 1303753E, then along FITZMAURICE RIVER 7 – 145110S 1303119E, then along FITZMAURICE RIVER 6 – 145210S 1302252E, then along FITZMAURICE RIVER 5 – 145006S 1301119E, then along FITZMAURICE RIVER 4 – 144748S 1300644E, then along FITZMAURICE RIVER 3 – 144755S 1295658E – 151610S 1295044E, then along THE VICTORIA RIVER 10 – 152050S 1295209E, then along THE VICTORIA RIVER 9 – 152611S 1295738E, then along THE VICTORIA RIVER 8 – 152416S 1300511E, then along THE VICTORIA RIVER 7 – 152326S 1301423E, then along THE VICTORIA RIVER 6 – 152224S 1301445E, then along THE VICTORIA RIVER 5 – 152159S 1301609E, then along THE VICTORIA RIVER 4 – 153136S 1302222E, then along THE VICTORIA RIVER 5 – 153615S 1302348E – 152459S 1294659E – 150947S 1292700E – 143726S 1283151E – 142222S 1284723E then along the counter clockwise arc of a circle radius 170.00NM centre 122524S 1305423E (DN/DME) – 143432S 1290013E – 141437S 1291800E

Vertical Limits: SFC – UNL

Hours of Activity: NOTAM

Controlling Authority: Department of Defence (contact details to be published in NOTAM)

- 2.11 D236A – 'COOLIBAH CORRIDOR NORTH VFR TRANSIT LANE' and D236B – 'COOLIBAH CORRIDOR SOUTH VFR TRANSIT LANE' will not be available during Configuration Emerald activation times. VFR transit is to be conducted to the east of R269 and R270.

2.12 AIRSPACE CONFIGURATION LOLLIPOP

2.12.1 Airspace Configuration Lollipop will utilise the following TRA to contain dangerous activities on the 15-16 JUL (Image contained in Appendix 4):

YBBB/TRA 'LOLLIPOP'

Conditional Status: RA2

Military Flying/Non-Flying

Lateral Limits: 153545S 1302927E – 153613S 1303318E – 153419S 1304805E – 151648S 1310245E – 144420S 1310211E – 144239S 1303638E – 144740S 1302202E – 150926S 1300631E – 152856S 1300746E – 153615S 1302348E then along the clockwise arc of a circle radius 3.00NM centre 153714S 1302644E – 153545S 1302927E

Vertical Limits: SFC – FL360

Activation Times: NOTAM

Controlling Authority: Department of Defence (contact details to be published in NOTAM)

2.13 D236A – 'COOLIBAH CORRIDOR NORTH VFR TRANSIT LANE' and D236B – 'COOLIBAH CORRIDOR SOUTH VFR TRANSIT LANE' will not be available during TRA 'LOLLIPOP' activation times.

2.14 AIRSPACE CONFIGURATION RUBY

2.14.1 Airspace Configuration Ruby uses the following permanent and temporary SUA (Image contained in Appendix 5):

AIRSPACE CONFIGURATION RUBY (25-26 JULY)		
Airspace	Vertical Limits	Controlling Authority
R268	SFC – UNL	Army RCO BFTA
R269	SFC – UNL	Army RCO BFTA
R270	SFC – UNL	Army RCO BFTA
R224AB	SFC – UNL	Army RCO Mt Bunday
TRA 'RUBY' (see para 2.15)	10000 – UNL	JACC

2.15 TRA ‘RUBY’ is established to support Airspace Configuration Ruby activations in accordance with the following dimensions:

YBBB/TRA ‘RUBY’

Conditional Status: RA2

Military Flying/Non-Flying

Lateral Limits: 125507S 1314106E – 125806S 1314301E –
130020S 1314521E – 130722S 1315029E – 130918S 1315227E –
131023S 1315230E – 131023S 1320420E – 152105S 1310000E –
145543S 1310000E – 145537S 1304546E – 145536S 1304523E –
144929S 1303753E Then along FITZMAURICE RIVER 7 –
145110S 1303119E Then along FITZMAURICE RIVER 6 –
145210S 1302252E Then along FITZMAURICE RIVER 5 –
145006S 1301119E then along FITZMAURICE RIVER 4 –
144748S 1300644E Then along FITZMAURICE RIVER 3 –
144755S 1295658E – 125507S 1314106E

Vertical Limits: 10000 – UNL

Hours of Activity: NOTAM

Controlling Authority: Department of Defence (contact details to be published in NOTAM)

2.16 D236A - ‘COOLIBAH CORRIDOR NORTH VFR TRANSIT LANE’ and D236B – ‘COOLIBAH CORRIDOR SOUTH VFR TRANSIT LANE’ will not be available during TRA ‘RUBY’ activation times with VFR transit to be conducted east of R269 and R270 if tracking towards RAAF Tindal or west of R268 if tracking towards RAAF Darwin.

2.17 LFX Airspace Activation Timings

2.17.1 LFX airspace activations will be in accordance with the following table:

Airspace Configuration Emerald Timings		
DATE	TIME (LOCAL)	TIME (UTC)
15 – 16 JUL 25	0600 – 1000 (ACST)	2030 – 0030
Airspace Configuration Lollipop Timings		
DATE	TIME (LOCAL)	TIME (UTC)
15 – 16 JUL 25	1400 – 1700 (ACST)	0430 – 0730
Airspace Configuration Ruby Timings		
DATE	TIME (LOCAL)	TIME (UTC)
25 – 26 JUL 25	1000 – 1200 (ACST)	0030 – 0230
	1400 – 1600 (ACST)	0430 – 0630

2.18 Airspace Configuration Lollipop overlaps with Airspace Configuration Bravo for the first hour of its activation (0430-0530 UTC). Aircraft flying beneath Configuration Bravo airspace in the vicinity of Bradshaw Field Training Area (R268, R269, R270) are to ensure they remain clear of TRA 'LOLLIPOP' during activation times as the lateral boundary differs from the extant restricted airspaces.

2.19 Extant SUA activations

2.19.1 Throughout the exercise period permanent SUA may be activated outside of the timings discussed for LFE and LFX activities above in accordance with normal NOTAM requirements.

2.20 Three configurations of multiple airspace volumes are described below for ease of understanding the effect upon non-participants. These configurations include: Configuration Curtin, Configuration Tindal and Configuration Darwin.

2.21 Airspace Configuration Curtin, Configuration Tindal and Configuration Darwin are planned to be activated between 19 – 24 JUL with timings to be published by NOTAM.

2.22 AIRSPACE CONFIGURATION CURTIN

2.22.1 Airspace Configuration Curtin will utilise the following permanent SUA (Image contained in Appendix 6):

AIRSPACE CONFIGURATION CURTIN		
Airspace	Vertical Limits	Controlling Authority
R801 – Partial (See para 2.1)	SFC – 3500	44WG MAOT
R802A	3500 – FL200	44WG MAOT
R802B	FL200 – FL360	DEFENCE JACC
R803AB	5500 – FL360	DEFENCE JACC
R806AB – Partial (See para 2.22.3)	5500 – FL360	DEFENCE JACC
M821AB	FL125 – FL360	DEFENCE JACC
M823AB – Partial (See para 2.22.3)	FL125 – FL360	DEFENCE JACC
M824	5000 – FL360	DEFENCE JACC
D813	SFC – 5500	DEFENCE JACC
D817	SFC – FL125	DEFENCE JACC
D816 Partial (See para 2.22.2)	SFC – 5500	DEFENCE JACC
D820 Partial (See para 2.22.2)	SFC – FL125	DEFENCE JACC

2.22.2 The following Configuration Curtin airspace volumes have the same vertical and lateral dimensions as is noted in para 2.6.4:

- a) D816 Partial
- b) D820 Partial

2.22.3 The following Configuration Curtin airspaces have different vertical limits with the same lateral limits as those listed in paragraph 2.6.4:

- a) R806AB Partial – 5500 – FL360
- b) M823AB Partial – FL125 – FL360

2.23 AIRSPACE CONFIGURATION TINDAL

2.23.1 Airspace Configuration Tindal will utilise the following permanent SUA (Image contained in Appendix 7):

AIRSPACE CONFIGURATION TINDAL		
Airspace	Vertical Limits	Controlling Authority
R225ABCDEF	9500FT – FL360	452SQN TDL FLT
R238	3500FT – FL360	452SQN TDL FLT
R245	9500FT – FL360	452SQN TDL FLT
R247	4000FT – 9500FT	452SQN TDL FLT
R248	4000FT – 9500FT	452SQN TDL FLT
R250	SFC – 9500FT	452SQN TDL FLT
R253	8500FT – FL360	452SQN TDL FLT
R262A Partial (See para 2.23.2)	8500 – FL360	452SQN DAR FLT
R262BC	8500 – FL360	452SQN DAR FLT
R268	SFC – 4000FT	Army RCO BFTA
R269	SFC – 4000FT	Army RCO BFTA
R270	SFC – 4000FT	Army RCO BFTA
D209	SFC – 2500FT	452SQN TDL FLT
D210	SFC – BCTA	452SQN TDL FLT
D223	SFC – 8500FT	452SQN TDL FLT
D229	SFC – 8500FT	452SQN TDL FLT
D236AB	SFC – 3000FT	Army RCO BFTA

2.23.2 The following Configuration Tindal airspace has different vertical limits with the same lateral limits as those listed in paragraph 2.5.2:

- a) R262A Partial – 8500 – FL360

2.24 AIRSPACE CONFIGURATION DARWIN

2.24.1 Airspace Configuration Darwin will utilise the following permanent SUA (Image contained in Appendix 8):

AIRSPACE CONFIGURATION DARWIN		
Airspace	Vertical Limits	Controlling Authority
M240A Partial (See para 2.24.2)	5000FT – FL360	452SQN DAR FLT
M240D Partial (See para 2.24.2)	5000FT – FL360	452SQN DAR FLT
M240BCDEF	5000FT – FL360	452SQN DAR FLT

2.24.2 The following partial airspace dimensions will be utilised for Airspace Configuration Darwin:

M240A PARTIAL

Military Flying / Non-Flying

Lateral Limits: 114512S 1305433E – 110502S 1305339E then along the clockwise arc of a circle radius 80.00NM centre 122524S 1305423E (DN/DME) – 112050S 1314257E – 115307S 1311842E then along the counter clockwise arc of a circle radius 40.00NM centre 122524S 1305423E (DN/DME) – 114512S 1305433E

Vertical Limits: 5000 – FL360

Hours of Activity: NOTAM

Administering Authority: FLTCDR 452SQN DARWIN

M240D PARTIAL

Military Flying / Non-Flying

Lateral Limits: 115307S 1311842E – 112050S 1314257E then along the clockwise arc of a circle radius 80.00NM centre 122524S 1305423E (DN/DME) – 120220S 1321238E - 121423S 1313341E then along the counter clockwise arc of a circle radius 40.00NM centre 122524S 1305423E (DN/DME) – 115307S 1311842E

Vertical Limits: 5000 – FL360

Hours of Activity: NOTAM

Administering Authority: FLTCDR 452SQN DARWIN

2.25 NOTAM

- 2.25.1 Darwin (DSX), Tindal (TNX), Curtin (CNX), Bradshaw Field Training Area (YBBB) and TRA/TDA/TMOA (YBBB) NOTAM shall be issued to confirm activation and vertical limits. Times may be amended or airspace deactivated by NOTAM at short notice, however times shall not exceed what is listed in this SUP for support of the exercise.
- 2.25.2 Activation of any airspace configurations discussed above will specifically refer to this SUP in NOTAM.
- 2.26 General airspace enquiries prior to exercise start can be made to the Joint Airspace Control Cell (JACC) on (02) 6128 4858 during normal business hours (AEST) or via email: adf.airspace@defence.gov.au.
- 2.27 During execution, queries can be directed by email to the JACC or by contacting the relevant airspace Controlling Authorities listed in ERSA and within this SUP.

3. ACCESS TO EXERCISE AIRSPACE

- 3.1 Transit of exercise airspace by non-participant aircraft is not available, except for:
- a) Aircraft operating in the preservation of life or property (SAR), MED, POL, FFR),
 - b) Aircraft with a declared emergency,
 - c) And in circumstances listed at para 4.1 (Port Keats Instrument Flight Procedures).
- 3.2 No air traffic service will be provided within Northern Australian Exercise Period designated airspace with the exception of a Class D aerodrome service provided at RAAF Curtin within R801 Partial and R802A.
- 3.3 Any non-participant aircraft approved to transit exercise airspace will be segregated for exercise activities by a lateral minimum of 5NM or 1,000FT vertically.
- 3.4 Every endeavour will be made to adjust exercise activities and minimise delays to facilitate transit of aircraft engaged in Border Force tasks or non-participant aircraft requiring diversion around weather.
- 3.4.1 Border Force transits must be pre-coordinated with the relevant Authority.

4. AIRCRAFT OPERATIONS

4.1 Port Keats Instrument Flight Procedures (YPKT IFP)

- 4.1.1 A NOTAM will be issued to advise that all IFP at YPKT will be unavailable during activation of TRA 'EMERALD' (Configuration Emerald). Should an aircraft require access to YPKT IFP in IMC, the controlling authority will facilitate access where safe to do so.
- 4.1.2 Flight crews anticipating a requirement to conduct the IFP in IMC prior to departure are to contact the controlling authority by phone to advise of this requirement. Should the situation arise once airborne, flight crews are to request transit clearance of TRA 'EMERALD' through BN CEN, who will co-ordinate transit clearance with the controlling authority.

4.2 Darwin Instrument Flight Procedures (YPDN IFP)

- 4.2.1 During activation of TRA 'RUBY' (Configuration Ruby) both the VEGPU One (Alpha and Whiskey) Standard Arrival (STAR) and LAKUP Five Standard Instrument Departure (SID) will not be available, flight crews should anticipate alternate clearance via the GATOR Four (Alpha and X-Ray) STAR and RUSKA SIX SID during TRA 'RUBY' activation timings.

4.3 Tindal Instrument Flight Procedures (YPTN IFP)

- 4.3.1 During activation of TRA 'RUBY' (Configuration Ruby), the LARAB FOUR SID and DARWIN (DN) FOUR SID will not be available. Flight crews should expect an alternative instrument departure where required during TRA 'RUBY' activations.

4.4 Aerial mustering operations

- 4.4.1 Requests for aerial mustering operations Tuesday to Friday must be emailed to tdl.airspacecell@defence.gov.au at least 24 hours prior to the planned activity. Requests for Saturday to Monday operations must be emailed prior to 0800 Local on the preceding Friday. A Restricted Operating Zone (ROZ) will be established for notified aerial mustering operations, which military aircraft will plan to avoid. Prepositioning of aerial mustering aircraft should be accomplished outside of airspace activation windows.

5. CURTIN AERODROME PROCEDURES

- 5.1 44WG MAOT will act as the Controlling Authority of R801 Partial and R802A during the exercise period.
- 5.2 During required hours, a Class D aerodrome air traffic service (ATS) will be provided within R801 partial and R802A with service hours to be confirmed by NOTAM. Outside of the notified ATS hours, R801 Partial and R802A may still be activated with any transit requests to be directed to 44WG MAOT.

5.3 ATS Agencies

- 5.3.1 The following frequencies differs from Curtin ERSa FAC entry:

AGENCY	CALLSIGN	FREQ
SMC	CURTIN Ground	135.925
ACD	CURTIN Delivery	136.725
APP	CURTIN Approach	136.85
ATIS	CURTIN	126.25

- 5.4 Airspace clearance to transit R801 partial and R802A partial may be granted to civil aircraft provided pre-coordination is conducted with 44WG MAOT and an airways clearance is granted. 44WG MAOT can be contacted on:

- a) PRI: 0492 178 588
- b) SECONDARY: ycin.atc@defence.gov.au

5.5 SARWATCH/SARTIME

- 5.5.1 SARWATCH/SARTIME nominations shall be made with BN CEN/CENSAR IAW *AIP ENR 1.1 para 10.2*. CURTIN TOWER may assist with SARWATCH/SARTIME cancellation (when staffed) where aircrew are unable to establish two way communications with BN CEN.
- 5.6 Contact details for YCIN airspace activation outside of the exercise period will be advised via published airspace activation NOTAM with any ATS also notified by NOTAM.

6. MILITARY AIRCRAFT OPERATIONS

6.1 Danger and sensitive areas

- 6.1.1 High speed military jet aircraft, without communications, will be operating within the noted danger areas during NOTAM activation periods. Traffic information will not be provided to or about participant aircraft operating in these danger areas.
- 6.1.2 Military aircraft will plan to avoid known sensitive areas, high density tourist aviation activity areas, and comply with Fly Neighbourly Advice.
- 6.1.3 Military airlift aircraft will also be operating within danger areas during NOTAM activation periods with operations in the vicinity of Kununurra, Argyle, Nackaroo (Bradshaw Field Training Area), Timber Creek, Darwin and Tindal.

7. DIVERSION ROUTES

- 7.1 The following routes are partially or wholly restricted during the exercise period activation windows:
 - A339
 - A587
 - A576
 - A461
 - A464
 - G326
 - J72
 - J93
 - J151
 - T27
 - T28
 - T63
 - Z35
 - Z81
 - W202
 - W213

- W226
- W287
- W394
- W404
- W417
- W605
- W614
- W843
- W865
- Aircraft arriving and departing YPDN
- Aircraft arriving and departing YBRM
- Aircraft operating overhead YDBY and YCIN
- Aircraft operating on User Preferred Routes in the YBBB FIR in the vicinity of this Exercise
- Pilots intending to operate on these routes must plan in accordance with the diversion routes specified in the following tables.

7.2 Diversion Routes LFE Configuration Alpha

7.2.1 Darwin Departures - Jet

YBCS clockwise to YPAD and YBAS	Via Y25
090DN VOR to 170DN VOR inclusive	Via Y25
171DN VOR to 255DN VOR inclusive	J151 – IRPOM Or If destination is underneath the Config ALPHA airspace: Via J151 – IRPOM with flight above A100 not available after IRPOM
256DN VOR to 299DN VOR inclusive	Via J61 – JULIE
300DN VOR to 359DN VOR inclusive	Via OCTOB – preferred route
077DN VOR to 170DN VOR inclusive	Via Y25 RUPEG

7.2.2 Darwin Departures – Non-jet at or above A090

121DN VOR to 180DN VOR inclusive	Via J251
181DN VOR to 234DN VOR inclusive	Via GUSNU – IKASO – preferred route
271DN VOR to 295DN VOR inclusive	Via J61 – JULIE
060DN VOR to 100DN VOR inclusive	Via VANDI – preferred route
101DN VOR to 120DN VOR inclusive	Via RUSKA – preferred route

7.2.3 Darwin Arrivals – Jet

YBCS clockwise to YPAD and YBAS	Via Q23 (joining at various positions on track as per FPR)
091DN VOR to 180DN VOR	Via Q23 (joining at various positions on track as per FPR)
181DN VOR to 255DN VOR	If departing from underneath the Config ALPHA airspace: NAILA – NUBKO – DN. Flight above A100 available once clear of the TRA. or If departure point is south of the Config BRAVO airspace: BOYDI – GREGA – J251 – TN – Q23 – DN
256DN VOR to 359DN VOR	Via ANUPA – M768
060DN VOR to 090DN VOR	Via DAGAK - GATOR

7.2.4 Darwin Arrivals – Non-jet at or above A090

060DN VOR to 105DN VOR inclusive	Via DAGAK – GATOR
106DN VOR to 170DN VOR inclusive	Via Q23 (joining at various positions on track as per FPR)
171DN VOR to 234DN VOR inclusive	NAILA – NUBKO - DN
256DN VOR to 359 DN VOR inclusive	Via ANUPA – M768

7.2.5 Broome Arrivals and Departures

YBRM Departures overflying YCIN and YDBY	BRM TWIST DCT
YBRM Arrivals overflying YCIN and YDBY	DCT NIKOM YLBD BRM
YBRM Arrivals and Departures for aerodromes affected by TDA BOVINE	BRM BAVOT UNSOV DCT
YBRM Arrivals and Departures for aerodromes Clear of TDA BOVINE	BRM TATUK DCT

7.2.6 Overflying Aircraft East – Northbound

A461	DN – J251 – TN – GREGA – DIGLA
A464	IKUMA – DN – J251 – TN – MIGAX

7.2.7 Overflying Aircraft East – Southbound

A461	DIGLA – GREGA – J251 – DN – preferred route
A464	MIGAX – TN – J251 – DN – IKUMA - preferred route

7.2.8 Overflying Aircraft West – Above FL360

A587	A587 remains usable for northbound and southbound aircraft
Operating west of TM PUCK, not on A587 Darwin Departures via IRPOM J151	On or west of 1600S 12540E JATAR PAMDO YBNR Note – Darwin Arrivals and Departures should plan on or north of DCT JATAR 1600S 12540E Aircraft intending to leave A587 and track east should plan via JATAR PAMDO YBNR DCT, or via DEENO

7.2.9 Overflying Aircraft West – Below FL360

West of R802AB	DCT YKLC BAVOT DCT
Overhead YCIN below FL200	<p>Clearances will not be available for aircraft below FL200 flying over YCIN and YDBY.</p> <p>Aircraft should look to flight plan via positions clear of R801 Partial and R802AB. These include:</p> <ul style="list-style-type: none"> - BRM - BAVOT - BIGUP - YLBD

7.3 Diversion Routes LFE Configuration Bravo

7.3.1 During Configuration Bravo, the portion of TMOA 'PUCK' and TMOA 'PROSPECT' airspace from FL360 – FL600 north east of the line between 153832S 1285955E – 141236S 1270333E will be released to BN CEN to facilitate non-participant diversion routes.

7.3.2 Darwin Departures – Jet

YBCS clockwise to YPAD and YBAS	Via Y25
090DN VOR to 170DN VOR inclusive	Via Y25
171DN VOR to 255DN VOR inclusive	<p>If destination is south of the Config BRAVO airspace: Via Y25 to BEBUX – GREGA – BOYDI – TATUK – preferred route</p> <p>Or</p> <p>If destination is underneath the Config BRAVO airspace: Via J151 – IRPOM with flight above A100 not available after IRPOM</p>
256DN VOR to 299DN VOR inclusive	Via J61 – JULIE
300DN VOR to 359DN VOR inclusive	Via OCTOB – preferred route
077DN VOR to 170DN VOR inclusive	Via Y25 RUPEG

7.3.3 Darwin Departures – Non-jet at or above A090

121DN VOR to 180DN VOR inclusive	Via J251
181DN VOR to 234DN VOR inclusive	Via GUSNU – IKASO – preferred route
271DN VOR to 295DN VOR inclusive	Via J61 – JULIE
060DN VOR to 100DN VOR inclusive	Via VANDI – preferred route
101DN VOR to 120DN VOR inclusive	Via RUSKA – preferred route

7.3.4 Darwin Arrivals – Jet

YBCS clockwise to YPAD and YBAS	Via Q23 (joining at various positions on track as per FPR)
091DN VOR to 180DN VOR	Via Q23 (joining at various positions on track as per FPR)
181DN VOR to 255DN VOR	<p>If departing from underneath the Config BRAVO airspace: NAILA – NUBKO – DN once clear of TRA or If departure point is south of the Config BRAVO airspace: BOYDI – GREGA – J251 – TN – Q23 – DN</p>
256DN VOR to 359DN VOR	Via ANUPA – M768
060DN VOR to 090DN VOR	Via DAGAK - GATOR

7.3.5 Darwin Arrivals – Non-jet at or above A090

060DN VOR to 105DN VOR inclusive	Via DAGAK – GATOR
106DN VOR to 170DN VOR inclusive	Via Q23 (joining at various positions on track as per FPR)
171DN VOR to 234DN VOR inclusive	If departing from underneath the Config BRAVO airspace: NAILA – NUBKO – DN once clear of TRA or If departure point is south of the Config BRAVO airspace: BOYDI – GREGA – J251 – Q23 - DN
256DN VOR to 359 DN VOR inclusive	Via ANUPA – M768

7.3.6 Broome Arrivals and Departures

YBRM Departure to the North-East	From A055-A085 BRM YBGB A085-FL125 BRM LBDWA YKLC DCT Aircraft tracking east of BRM BGB are required to remain below A055 at all times
YBRM Arrivals from the North-East	From A055-FL125 BEBAP BRM DCT If unable BEBAP due operational requirement, plan via GUKEL BRM
YBRM Arrivals and Departures for aerodromes affected by TDA BOVINE	BRM BAVOT UNSOV DCT
YBRM Arrivals and Departures for aerodromes Clear of TDA BOVINE	BRM TATUK DCT

7.3.7 Overflying Aircraft East – Northbound

A461	DIGLA – GREGA – J251– DN – preferred route
A464	MIGAX – TN – J251 – DN – IKUMA - preferred route

7.3.8 Overflying Aircraft East – Southbound

A461	DN – J251 – TN – GREGA – DIGLA
A464	IKUMA – DN – J251 – TN – MIGAX

7.3.9 Overflying Aircraft East – Above FL360

- a) During Configuration Bravo, the portion of TMOA ‘PUCK’ and TMOA ‘PROSPECT’ airspace from FL360 – FL600 north east of the line between 153832S 1285955E – 141236S 1270333E will be released to BN CEN to facilitate non-participant diversion routes. This is reflected in the diversion route below:

G326	ONOX – ANJJO – SCUBY – VINAX
Air routes to the North-East of G326 UPR operations	Air routes to the North-East of ONOX – ANJJO – SCUBY – VINAX Remain usable for operations above FL360. UPR's may be planned on or north of the above route, above FL360.

7.3.10 Overflying Aircraft West – All Levels

Routes from G326 South to T20	BOPLO T20 BRM TATUK
-------------------------------	---------------------

7.4 Diversion Routes LFX Configuration Emerald

- 7.4.1 LFX Configuration Emerald is planned to be activated immediately prior to LFE Configuration Bravo. As such, flight crews are to be cognisant of the airspace switch over and plan accordingly to comply with applicable diversion routes.

7.4.2 Overflying Aircraft – North

A464	TN – DN – JULIE – J61 – IKUMA
A458	DN – JULIE – Q320 – KILIK
M766	DN – JULIE – Q320 – KILIK – SATNA

7.4.3 Overflying Aircraft – South

A464	IKUMA – J61 – DN – TN
A458	KILIK – JULIE – DN
M766	SATNA – KILIK – JULIE – DN

7.4.4 Darwin Departures – Southwest and West

W237 W843 J151 W287 J72 Z35 W614	<p>Western Diversion: DN – JULIE – PAGMI – IDOTO – preferred route</p> <p>Eastern Diversion: Flight crews are to plan to remain east of BFTA restricted airspaces (R268, R269, R270) and be cognisant of the LFE Configuration Bravo activation immediately after LFX Configuration Emerald becomes deactive. Should a flight plan conflict with both activation times, flight crews should utilise the eastern diversions noted for LFE Configuration Bravo. Any queries on eastern diversions can be directed to the JACC for resolution.</p>
--	---

7.4.5 Darwin Arrivals – Southwest and West

W237 W843 J151 W287 J72 Z35 W614	<p>Western Diversion: IDOTO – PAGMI – ANUPA – DN</p> <p>Eastern Diversion: Flight crews are to plan to remain east of BFTA restricted airspaces (R268, R269, R270) and be cognisant of the LFE Configuration Bravo activation immediately after LFX Configuration Emerald becomes deactive. Should a flight plan conflict with both activation times, flight crews should utilise the eastern diversions noted for LFE Configuration Bravo. Any queries on eastern diversions can be directed to the JACC for resolution.</p>
--	---

7.4.6 Tindal Departures – West

W226	TN – OVMIS – preferred route
------	------------------------------

7.4.7 Tindal Arrivals – West

W226	OVMIS – TN
------	------------

7.5 Diversion Routes LFX Configuration Ruby

7.5.1 Darwin Departures - Jet

YBCS clockwise to YPAD and YBAS	Via Y25
090DN VOR to 170DN VOR inclusive	Via Y25
171DN VOR to 255DN VOR inclusive	Via J151 – IRPOM – preferred route
256DN VOR to 299DN VOR inclusive	Via J61 – JULIE
300DN VOR to 359DN VOR inclusive	Via OCTOB – preferred route
077DN VOR to 170DN VOR inclusive	Via Y25 RUPEG

7.5.2 Darwin Departures – Non-jet at or above A090

121DN VOR to 180DN VOR inclusive	Via VANDI – preferred route
181DN VOR to 234DN VOR inclusive	Via W287 – LEVRI – preferred route
271DN VOR to 295DN VOR inclusive	Via J61 – JULIE
060DN VOR to 100DN VOR inclusive	Via VANDI – preferred route
101DN VOR to 120DN VOR inclusive	Via RUSKA – preferred route

7.5.3 Darwin Arrivals – Jet

YBCS clockwise to YPAD and YBAS	Via DOSBO – YCOO – DAGAK – GATOR
091DN VOR to 180DN VOR	Via DOSBO – YCOO – DAGAK – GATOR
181DN VOR to 255DN VOR	Via JULUP – J72
256DN VOR to 359DN VOR	Via ANUPA – M768
060DN VOR to 090DN VOR	Via DAGAK – GATOR

7.5.4 Darwin Arrivals – Non-jet at or above A100

060DN VOR to 105DN VOR inclusive	Via DAGAK – GATOR
106DN VOR to 170DN VOR inclusive	Via DOSBO – YCOO – DAGAK – GATOR
171DN VOR to 234DN VOR inclusive	Via JULUP – J72
256DN VOR to 359 DN VOR inclusive	Via ANUPA – M768

7.5.5 Tindal Departures – North and West

J251 and Q23	TN – COO – DAGAK – GATOR
W226	TN – W605 – OVMIS – preferred route

7.5.6 Tindal Arrivals – North and West

J251	RUSKA – NOKUN – ADKIV – TN
W226	OVMIS – W605 – TN

7.5.7 Overflying Aircraft – Northbound

A461	MONIC – RUPEG – DN – preferred route
J251	GREGA – RUPEG – DN – preferred route
J30	DOSAM – RUPEG – DN – preferred route
T74	MILIV – RUPEG – DN – preferred route
A464	MIGAX – RUPEG – DN – preferred route

7.5.8 Overflying Aircraft – Southbound

A461	DN – RUPEG – MONIC
J251	DN – RUPEG – GREGA
J30	DN – RUPEG – DOSAM
T74	DN – RUPEG – MILIV
A464	IKUMA – DN – RUPEG – MIGAX

7.6 Diversion Routes Configuration Curtin**7.6.1 Overflying Aircraft – Curtin Airspace**

A576	BOPLO T20 BRM T11 LIBTU
A587	ONOX A326 GUNAM MAMUT DOPUK

7.6.2 Broome Arrivals and Departures

YBRM Departure to the North-East	From A055-A085 BRM YBGB A085-FL125 BRM LBDWA YKLC DCT Aircraft tracking east of BRM BGB are required to remain below A055 at all times
YBRM Arrivals from the North-East	From A055-FL125 BEBAP BRM DCT If unable BEBAP due operational requirement, plan via GUKEL BRM
YBRM Arrivals and Departures for aerodromes affected by SUA	BRM BAVOT UNSOV DCT
YBRM Arrivals and Departures for aerodromes clear of Curtin SUA	BRM TATUK DCT

7.7 Diversion Routes Configuration Tindal

7.7.1 Overflying Aircraft – Tindal Airspace

A464	IKUMA DN RUPEG IGUVI SURVO RILVO
A461	DN J251 TN BEBUX GREGA DIGLA
J72 – All aircraft except YPKU departures	DN J151 IRPOM
J72 – YPKU Departures	KU EGUMI IRPOM J151 DN
W287	EGUMI IRPOM J151 DN

8. CANCELLATION

8.1 This SUP self-cancels at 202507261400 UTC.

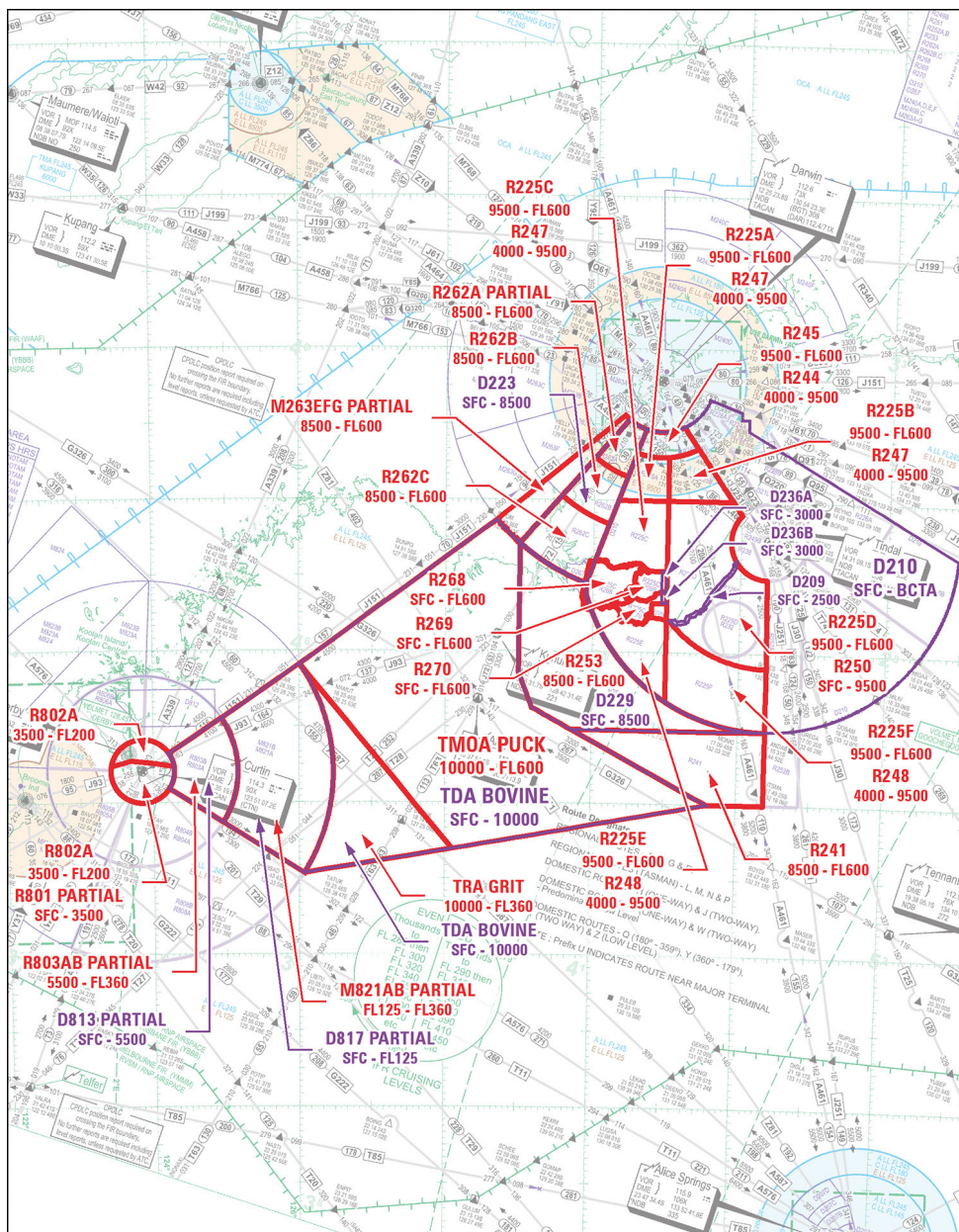
9. DISTRIBUTION

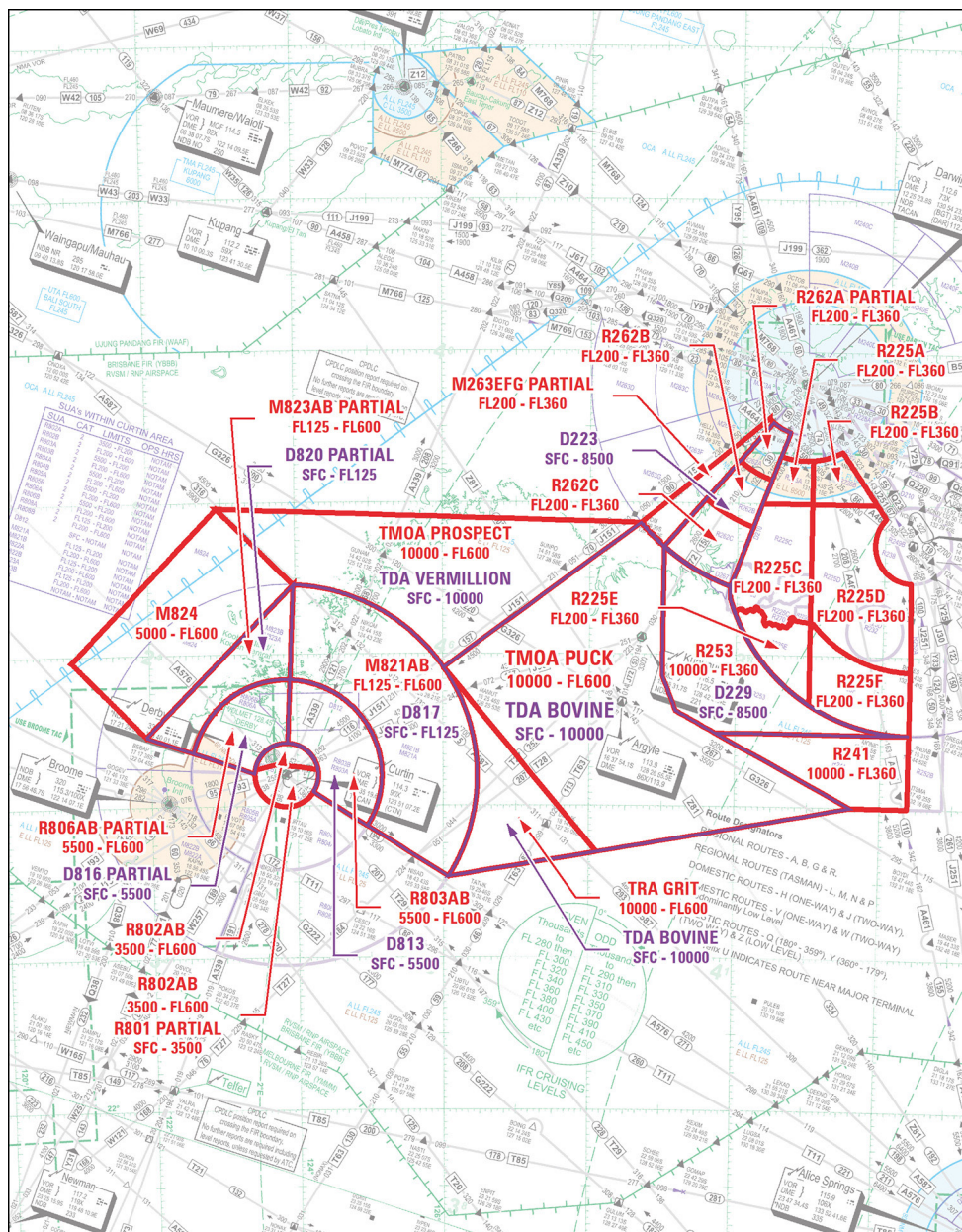
9.1 Airservices Australia website only.

Appendices

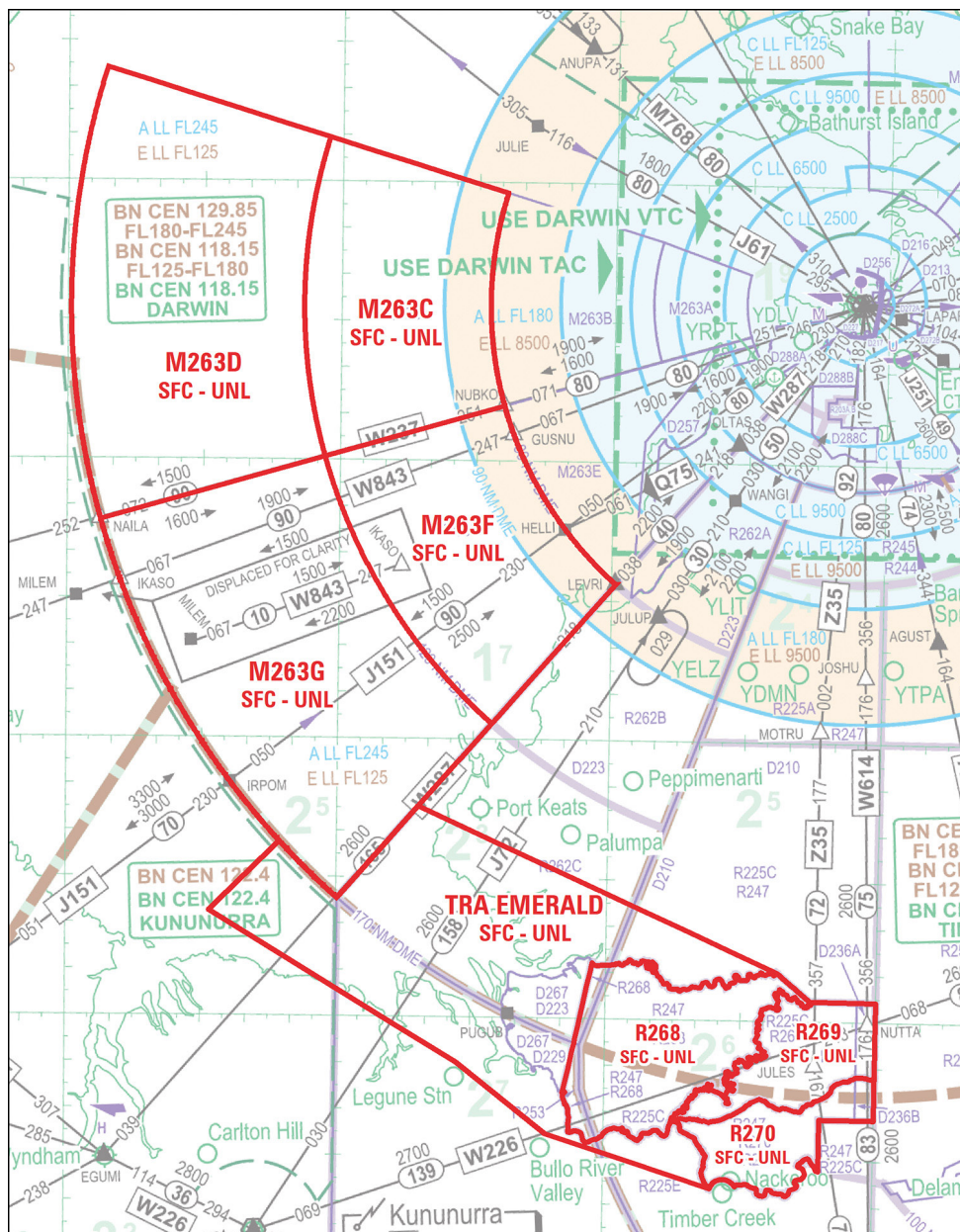
1. Airspace – LFE Configuration Alpha
2. Airspace – LFE Configuration Bravo
3. Airspace – LFX Configuration Emerald
4. Airspace – LFX Configuration Lollipop
5. Airspace – LFX Configuration Ruby
6. Airspace – Configuration Curtin
7. Airspace – Configuration Tindal
8. Airspace – Configuration Darwin

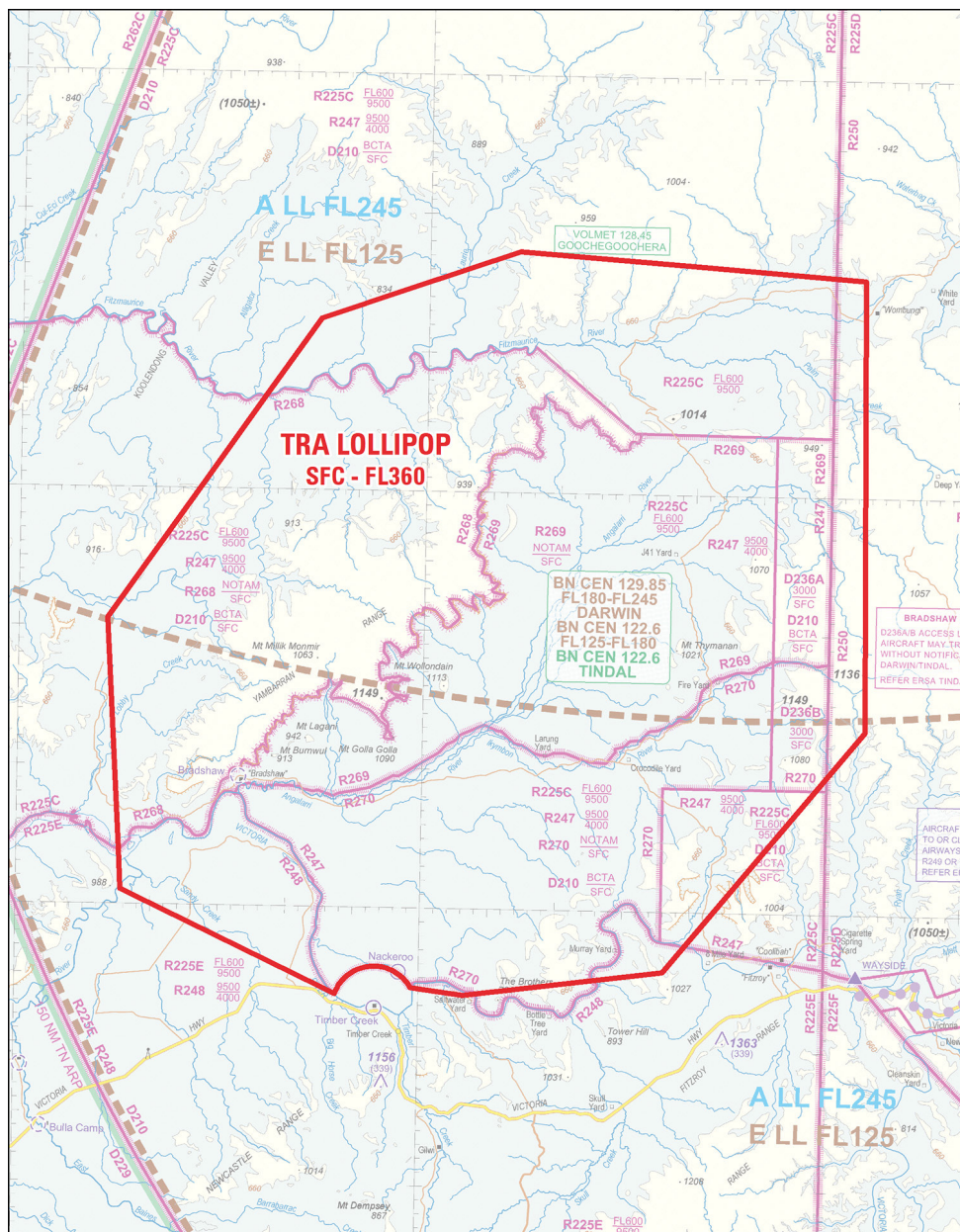
1. Airspace – LFE Configuration Alpha



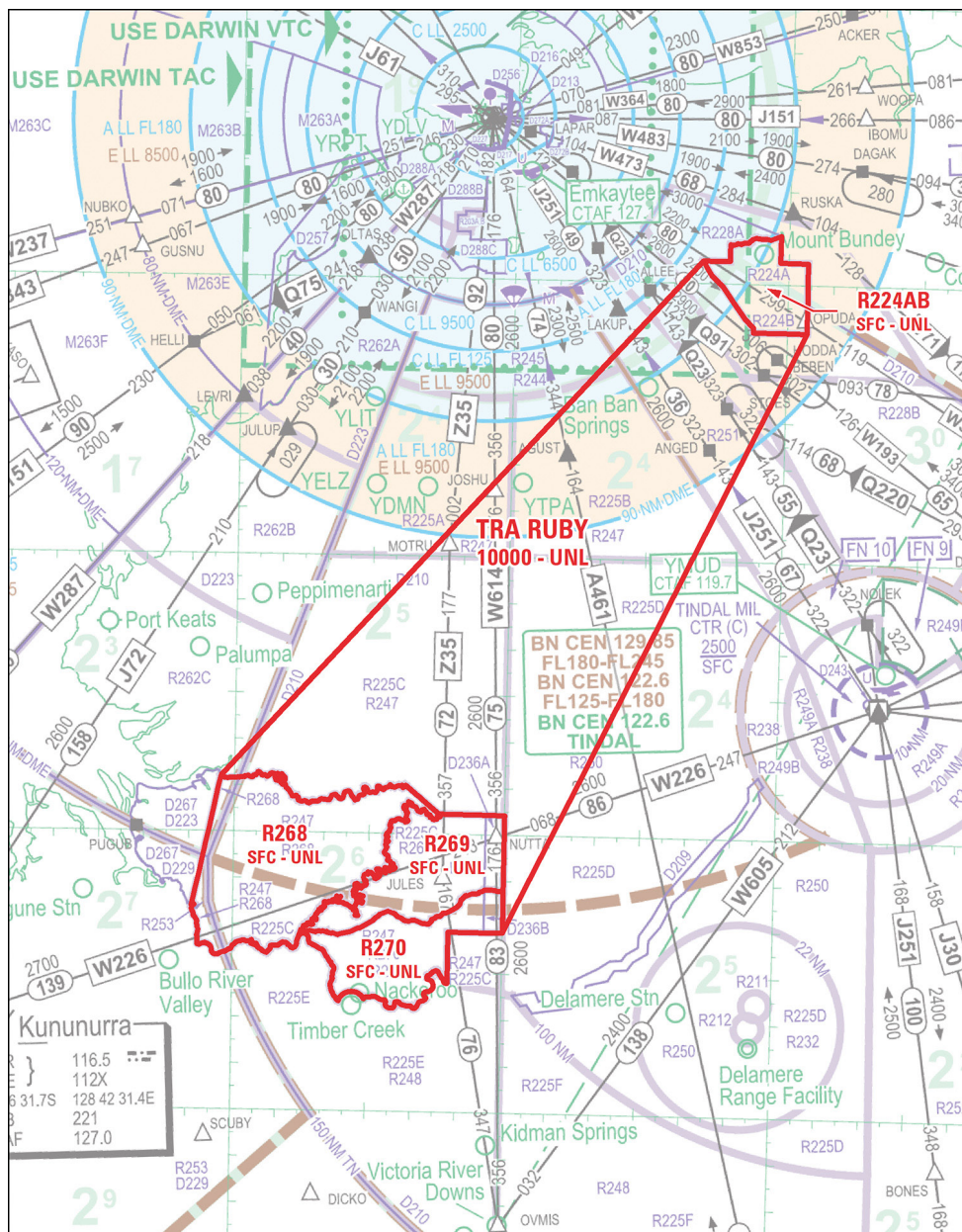


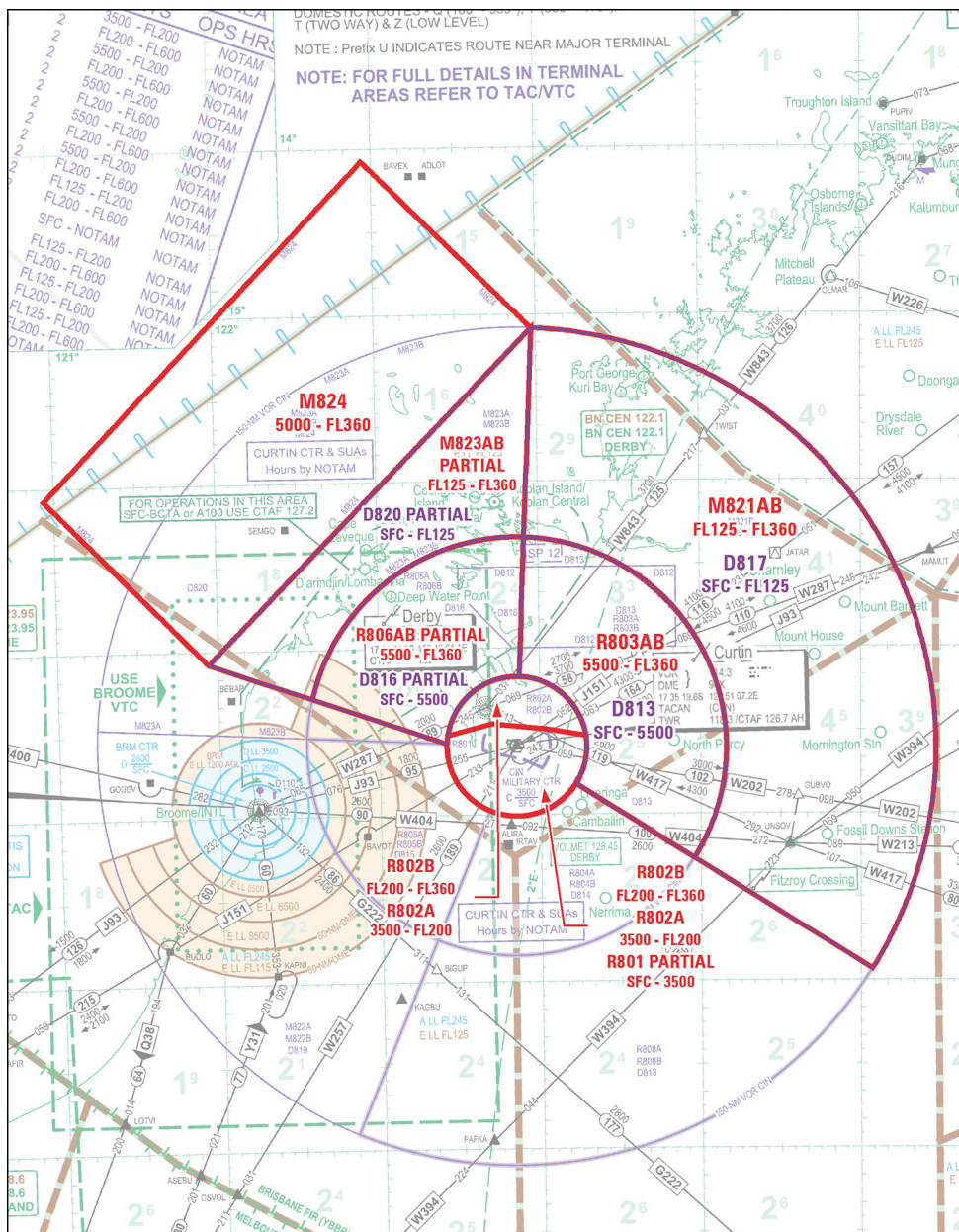
3. Airspace - LFX Configuration Emerald



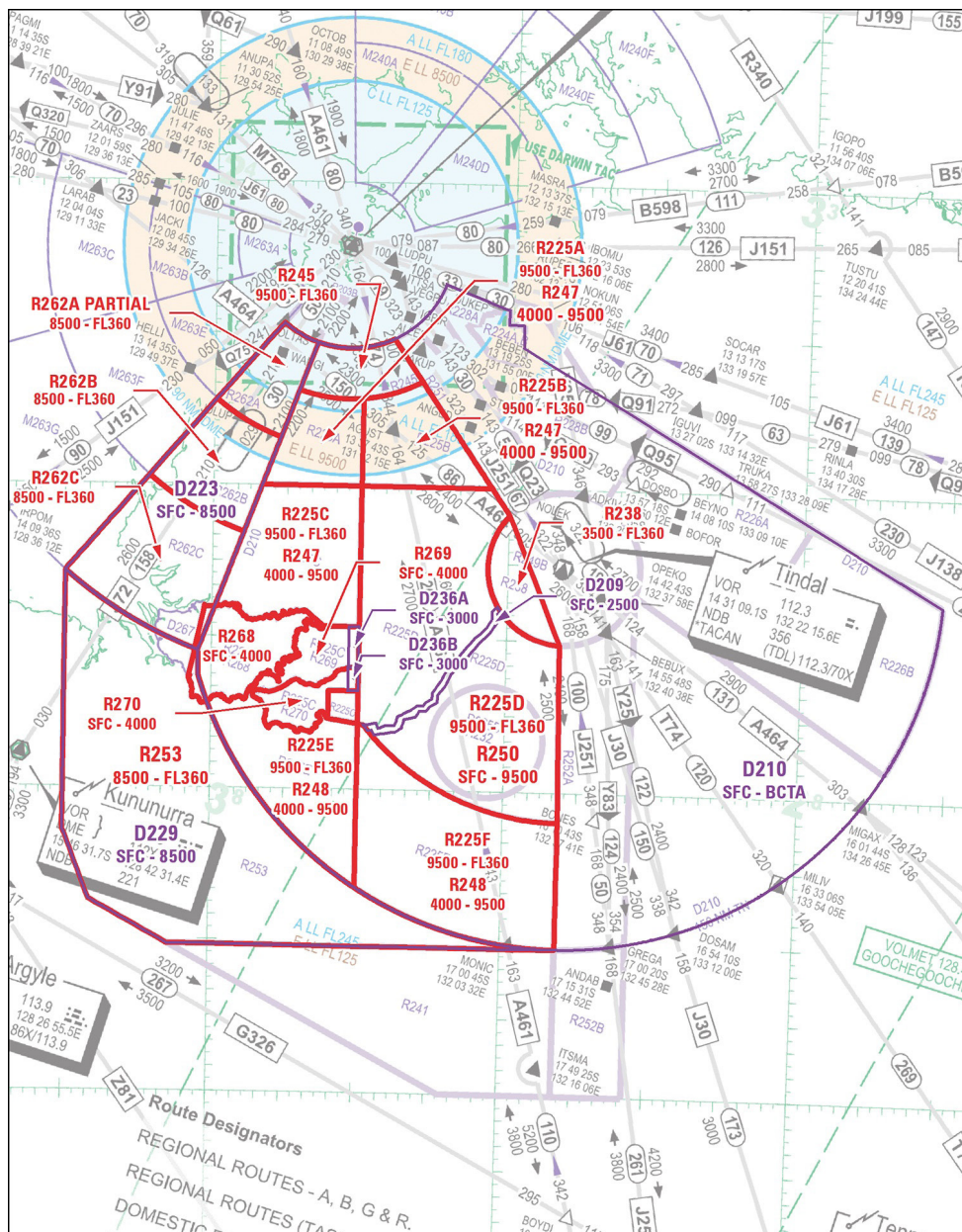


5. Airspace – LFX Configuration Ruby





7. Airspace – Configuration Tindal



8. Airspace – Configuration Darwin

