

**AIP SUPPLEMENT  
(SUP)****H01/25****Effective: 202503161600 UTC**

AERONAUTICAL INFORMATION SERVICE,  
AIRSERVICES AUSTRALIA, GPO BOX 367,  
CANBERRA ACT 2601

For **DISTRIBUTION** queries, contact:  
Email: [aim.editorial@airservicesaustralia.com](mailto:aim.editorial@airservicesaustralia.com)

For **CONTENT** queries regarding this SUP, contact:  
Email: [aircraftoperations@amda.com.au](mailto:aircraftoperations@amda.com.au) Phone: 03 5282 0500

# **AUSTRALIAN INTERNATIONAL AIRSHOW 'AVALON 2025' AVALON AIRPORT (YMAV) 17 - 31 MARCH 2025**

## **1. INTRODUCTION**

- 1.1 The Australian International Airshow (Avalon 2025) will be held at Avalon Airport, Victoria, during the period 17 - 31 March 2025. Flying displays will occur 24 - 30 March 2025. Other dates in the period will involve significant arrival and departure activities. During the full period 17 - 31 March 2025, the use of airspace, airport and facilities varies from those published in *AIP Charts* and *ERSA*.

*Note: The airspace surrounding Avalon will become extremely congested and a high degree of airmanship and situational awareness will be required by pilots.*

- 1.2 Temporary Restricted Areas (TRA) will be declared, and specific air traffic services and procedures defined.
- 1.3 Transit flights through the restricted areas will not normally be permitted. Emergency traffic requiring operations in the restricted areas will be processed according to their priority requirements.
- 1.4 All operations to Avalon Airport (YMAV/AVV) during this period require prior permission from AMDA Foundation Ltd. (AMDA). All MEDEVAC, HOSP, SAR and FFR flights are exempt from requiring permission, but are strongly suggested to contact AMDA Aircraft Movements to allow for display contingencies to be made to accommodate their operation. Refer to Section 3.
- 1.5 Permission from AMDA does NOT constitute an Air Traffic Control (ATC) clearance to enter and operate within the TRA.

- 1.6 Non-display helicopter operations are subject to specific requirements, refer to Section 9.
- 1.7 In the weeks leading up to Avalon 2025, further briefing material (photographs, diagrams etc.) will be available on the AMDA website: [www.airshow.com.au](http://www.airshow.com.au)
- 1.8 Consistent with other AIP products, unless otherwise stated, all altitudes published in this SUP are AMSL.

## **2. SIGNIFICANT ISSUES AVALON 2025**

- 2.1 From 17-31 March, Avalon Tower will operate in accordance with ERSA published hours (0700 - 2300 Local). For operations outside tower hours, including emergency operations, the pilot must contact AMDA Aircraft Operations Centre on 0439 834 460 to arrange activation of Avalon Tower. Flight Plan notification is not sufficient.
- 2.2 TRA R979ABC, will be activated by YMMM NOTAM from 1200 Local 17 March until 1800 Local 31 March. Refer to Section 6.
- 2.3 New TRA R979D and R979E have been created to the southwest and north of YMAV respectively and will be activated by YMMM NOTAM in accordance with operational requirements during Avalon 2025. Refer to Sections 6 and 16.
- 2.4 Class D procedures as per *AIP ENR 1.1 section 2.2.7* apply in all TRA.
- 2.5 Unless specifically approved by ATC and CASA, all aircraft operating within the TRA must carry a serviceable VHF radio and transponder.
- 2.6 Helicopter procedures have changed from Avalon 2023. The Helicopter Terminal Area (HTA) will not be activated and all arriving and departing helicopters will receive a Class D ATC service, including within the Helicopter Access Corridor (HAC). Refer to Section 9.
- 2.7 The western boundary of R979A (SFC - 1,500FT) extends beyond the CTR boundary (as per Avalon 2023). Refer to the charts in Appendices 2 and 3 when operating in the airspace near Avalon Airport. Aircraft transiting to the west of Avalon Airport should take care to remain clear of R979A.
- 2.8 A CASA exemption has been issued to allow operations at Avalon Airport with obstacles within the Obstacle Restricted Area (ORA). The runway strip width is 300M (as published in ERSA FAC).

- 2.9 Obstacles located within the ORA include:
- a) A temporary flying operations facility of a height approximately 9.3M above ground level located approximately 142M east of the RWY 18/36 centreline and south of TWY C.
  - b) The obstacle mentioned in paragraph 2.9(a) will be marked and lit by a steady red light.
  - c) Additional obstacles as detailed in Appendices 11 and 12.
- 2.10 Avalon East airfield will not be operational in 2025. All flights to Avalon Airport require approval. Lethbridge Aerodrome (YLED) is being utilised as an alternative location for aircraft that would have previously utilised Avalon East.

### **3. FLY-IN ELIGIBILITY AND PRIOR PERMISSION FOR OPERATIONS AT AVALON AIRPORT**

- 3.1 Due to the expected volume of aircraft traffic and a lack of non-participant hardstand parking space, fly-in eligibility and priority to operate at Avalon Airport has been established in order of:
- i) Air Transport operations (Including medical transport operations).
  - ii) Flying and static display participants, commercial exhibitors, and charter flights.
- 3.2 With the exception of air transport operations, all operations to YMAV from 17 – 31 March 2025 require prior permission from AMDA. Avalon 2025 is for participant aircraft and other approved aircraft only. Permission must be requested via the registration link on the AMDA website (also provided below). AMDA will advise approved aircraft of an arrival slot, parking (where appropriate), and a departure slot.
- Registration link: <https://form.jotform.com/242978895026877>
- 3.3 Closing date for lodgement is 28 February 2025.
- 3.4 Aircraft may arrive/depart between 0700 – 1900 Local, in accordance with their arrival/departure slot (where appropriate) and subject to flying display and other operational restrictions.
- 3.5 Acceptance of a flight plan by Airservices Australia does not constitute receipt of AMDA permission.

- 3.6 With the exception of pilots and crew of air transport and display participant aircraft, all crew and occupants of aircraft disembarking at YMAV from Tuesday 25 – Sunday 30 March are required to be in possession of a valid (day of entry) Airshow ticket (scannable).
- 3.7 In accordance with AMDA regulations and conditions of attendance, pilots of General Aviation (GA) aircraft are reminded to bring and use tie-down equipment. Most GA aircraft will be parked on grassed surfaces and must be securely tied down. For further information, please contact AMDA Aviation:  
[aircraftmovements@amda.com.au](mailto:aircraftmovements@amda.com.au)
- 3.8 Further information on all aviation related requirements is available on the Avalon 2025 Website:  
Fly-In  
<https://airshow.com.au/visitors/plan-ahead/flying-in/>  
Ticketing  
<https://airshow.com.au/the-airshow/2025-event/ticketing/>  
Event Program  
<https://airshow.com.au/the-airshow/2025-event/event-program/>

## **4. AIR TRAFFIC MANAGEMENT**

- 4.1 With the exception of Air Transport operations, AMDA-approved rehearsal aircraft and priority flights (MEDEVAC, HOSP, SAR and FFR), aircraft requesting to operate at Avalon during display times can expect delays in excess of 60 MIN.

## **5. AVALON AIRPORT (YMAV) INFORMATION**

*Refer to Appendix 1*

- 5.1 This section supplements the information in ERSA.
- 5.2 Taxiway details are as follows:
- TWY F North 5,700KG MTOW, and located mid-field and west of the fire station can only be used with specific ATC clearance due to access requirements for emergency services vehicles.
  - TWY F South 9,900KG MTOW. PCN 7/F/C/Y/T. MAX tyre pressure 1.24MPa. Not to be used unless specifically instructed by ATC.

- TWY A closed between TWY B and TWY D, and re-designated as an apron due to static display aircraft.
- Holding point on TWY B will be temporarily relocated to be coincident with the gable markers.
- TWY B to the east of Bay 6 is re-designated as an apron.

## **6. SPECIAL USE AIRSPACE FOR AVALON 2025**

- 6.1 The following TRA and associated Class D control services will be activated by YMMM NOTAM from 1200 Local 17 March until 1800 Local 31 March 2025:

R979A (SFC – 1,500FT)

R979B (1,500FT – 4,500FT)

R979C (4,500FT – FL245)

- 6.2 The following TRA and associated Class D control services (new for Avalon 2025; see section 16) will be activated by YMMM NOTAM in accordance with operational requirements:

R979D (8,500FT – FL245)

R979E (2,500FT – 4,500FT)

The status of these additional TRA can be obtained via the Avalon ATIS.

*Refer to Appendices 2 and 3 for diagrams and Appendix 4 for coordinates.*

## **7. IFR OPERATIONS AT AVALON AIRPORT (YMAV)**

### **7.1 General**

- 7.1.1 With the exception of Air Transport or jet/turbine operations, IFR aircraft less than 5,700KG MTOW can expect substantial delays on arrival. Holding in excess of 60 MIN is not unusual. To reduce delays within R979 in VMC, pilots of aircraft less than 5,700KG MTOW (excluding Air Transport or jet/turbine) able to use VFR entry or exit procedures, are strongly advised to cancel IFR and proceed VFR. A note advising this in your flight plan will expedite your arrival (MEDEVAC, HOSP, SAR and FFR flights will be given priority).

## **7.2 Flight notification requirements**

- 7.2.1 IFR flights planning to operate to or from Avalon Airport must submit flight notification at least one (1) hour prior to intended operation. One hour flight notification is not required for MEDEVAC, HOSP, SAR or FFR flights.
- 7.2.2 Facilities will be available to flying display participants and visiting pilots to submit flight notification at the AMDA Flight Planning Centre, located in a temporary building to the west of the main entry complex.
- 7.2.3 Flight notification by radio will not be available through ATC VHF frequencies.

## **7.3 Access During Flying Displays**

- 7.3.1 From Tuesday 25 to Friday 28 March, flying display times will vary and aircraft will only be accepted within the TRA with prior approval. Aircraft arriving between these dates must carry an additional 60 MIN of holding fuel.
- 7.3.2 On Friday 28 March between 1330 - 2200 Local, and on Saturday 29 and Sunday 30 March between 0930 - 1700 Local, only Air Transport aircraft and aircraft with prior approval will be accepted within the TRA (MEDEVAC, HOSP, SAR and FFR flights will be accepted).

## **7.4 IFR Arrival Procedure**

- 7.4.1 The Avalon ATIS is available on 118.2 MHz and AV VOR 116.1 MHz.
- 7.4.2 All IFR arrivals will land on RWY 18/36. Backtracking on RWY 18 will often be necessary for larger aircraft to enable exit at either TWY B or TWY C due to the closure of parts of TWY A. Minimum delay while backtracking will assist runway usage by other aircraft. Significant delays for taxi/backtrack may be experienced during Air Displays.

## **7.5 IFR Departure Procedures**

- 7.5.1 IFR aircraft must delay their departure until at least 60 MIN after the air display on Saturday 29 and Sunday 30 March to allow VFR aircraft to depart without delay (MEDEVAC, HOSP, SAR and FFR flights are exempt).
- 7.5.2 To reduce frequency congestion and cater for high numbers of departing aircraft following the cessation of flying displays (and at other times during the activation of the TRA) modified clearance delivery procedures and phraseologies will apply as detailed in sections 7.6 to 7.9 inclusive.

## **7.6 Before Engine Start**

- 7.6.1 Obtain airways clearance and transponder code from Avalon Ground on 129.3 MHz within 30 MIN of ETD.
- 7.6.2 Expect the AVALON FIVE DEPARTURE (RADAR).
- 7.6.3 Obtain a start clearance from Avalon Ground on 129.3 MHz.

## **7.7 After Engine Start**

- 7.7.1 Monitor Avalon ATIS on 118.2 MHz.
- 7.7.2 Do not taxi without airways clearance and transponder code, due to excessive traffic movements.
- 7.7.3 Contact Avalon Ground on 129.3 MHz for taxi clearance and then follow the marshaller's instructions to the exit point of the apron and proceed to the assigned holding point.

## **7.8 At Holding Point**

- 7.8.1 DO NOT contact Avalon Tower until you are "Number 1" (next to depart) at the holding point. This is to facilitate efficient departure management.
- 7.8.2 When Number 1, report READY to Avalon Tower on 120.1MHz in the form: "(call-sign) IFR (aircraft type) READY RUNWAY (number) TAXIWAY (intersection)" E.g. "MWZ, IFR KINGAIR, READY RUNWAY 18, HOLDING POINT CHARLIE".
- 7.8.3 Normal line-up/takeoff clearance procedures apply.
- 7.8.4 Avalon Tower will issue you an assigned heading for the AVALON FIVE SID.

## **7.9 After Take-off**

- 7.9.1 Be aware there will be VFR helicopters operating in the helicopter lanes on a separate frequency to the east of the runway. Avalon Tower will pass specific traffic advice when appropriate.
- 7.9.2 Contact Melbourne Departures (129.4 MHz) passing 2,500FT.

## 8. GENERAL VFR OPERATIONS

- 8.1 If the cloud base is below 2,000FT, certain restrictions may apply to VFR aircraft. If necessary, VFR entry and holding altitudes listed below may be varied. Changes to these altitudes will be notified on the YMAV ATIS.
- 8.2 When within 30NM of Avalon Airport, squawk code 1000 (if equipped) and check ATIS for possible alternate arrival tracking and, if able, display your landing light.
- 8.3 Avalon Airport will be closed to arrivals for 30 MIN after the cessation of air displays to facilitate a large number of departures. These closures will be advised on the YMAV ATIS (MEDEVAC, HOSP, SAR and FFR priority flights will be accepted).
- 8.4 VFR aircraft intending to land at Avalon Airport shall enter R979 at the 8NM boundary west of Barwon Prison (BPN) or via Werribee South (WBES) and follow the abbreviated clearance arrival procedure unless otherwise instructed.
- 8.5 Aircraft operating VFR within R979 must operate in accordance with the procedures established in *AIP ENR 1.1 section 2.2.7*.
- 8.6 VFR aircraft will be permitted to arrive and depart Avalon Airport, subject to ATC clearance, provided they have received prior permission from AMDA. Slot times from AMDA are 'wheels on' and 'wheels off' times.
- 8.7 Due to exceptionally high volumes of expected traffic in the control area surrounding R979 and Lethbridge Aerodrome (YLED), VFR clearances into CTA may be unavailable. Pilots are not to expect a clearance into Melbourne Terminal Area Class C airspace (within 30NM of YMML).



## 9. HELICOPTER OPERATIONS

### 9.1 General

- 9.1.1 In addition to permission from AMDA, all helicopters require an ATC clearance to enter R979, including the Helicopter Access Corridor (HAC) and AMDA Final Approach and Take-off Area (FATO).
- 9.1.2 All *non-display* helicopters intending to operate into or out of Avalon Airport must:
- a) Obtain a briefing sheet from the UNICOM provider;
  - b) Squawk code 0301 and obtain the ATIS;
  - c) Remain within the designated HAC;
  - d) Operate not above 600FT; and
  - e) Arrive and depart at the AMDA FATO.
- 9.1.3 Briefing sheets contain a full description of the HAC, with details of route and route limitations, altitudes, arrival and departure procedures, radio frequencies and surrounding airspace. Contact CTAF Safe Australia (CSA) on 0481 856 482 for further information and to obtain briefing sheets.
- 9.1.4 The AMDA FATO is situated to the west of the YMAV Control Tower in proximity to the eastern limits of the Airshow grounds. It is marked by a white 'H' with bunting on fencing abutting the FATO. Helicopters will be marshalled to a nearby parking stand by the UNICOM operators. See description and diagram in the Helicopter Briefing Notes.
- 9.1.5 Class D ATC services are provided in the HAC and FATO by "AVALON CHOPPERS" (127.9 MHz).
- 9.1.6 Parking information and movement advice in the helicopter parking area is provided by "AVALON UNICOM" (124.8 MHz).
- 9.1.7 The HAC and FATO will be subject to closure during flying displays by the RAAF Roulettes and other display aircraft when necessary. Closure times will be broadcast on the Avalon ATIS and advised by Avalon Choppers and Avalon UNICOM.

## **9.2 Helicopter Access Corridor (HAC)**

9.2.1 The HAC is for the exclusive use of helicopters and defined as:

- within 300M west to 300M east of Pousties Road, to the intersection of Pousties Road and the Princes Freeway; then
- within 300M north and 300M south of the Princes Freeway to the north-eastern boundary of R979A;
- SFC to 600FT.

9.2.2 Accurate tracking in the HAC is essential. Traffic will be operating on separate frequencies in close proximity within the Avalon TRA, and within the HAC. Military traffic (both fixed wing and rotary) and warbirds will also be in close proximity transiting between Point Cook Aerodrome (YMPC) and Avalon Airport.

## **9.3 Helicopter Arrivals**

9.3.1 To assist traffic management, pilots are requested to minimise time at the FATO.

9.3.2 On arrival to the FATO, helicopters will be instructed to AIR TAXI to the helicopter parking area and directed to change to the UNICOM frequency, where they will be marshalled to their parking location.

9.3.3 If NOT arriving at the AMDA FATO, on first contact with Avalon Choppers request approval to leave the HAC and advise preferred landing site. Then follow ATC instructions. Early notification is essential.

## **9.4 Helicopter Departures**

9.4.1 Departing helicopters must obtain start approval from UNICOM.

9.4.2 Once ready to air taxi, contact Avalon Choppers with the following details:

“(callsign), (helicopter type), (stand number) request air taxi and departure for (destination), (POB), received (ATIS)”.

Example: “AVALON CHOPPERS, SIE, HUGHES 500 ON STAND 3 REQUEST AIR TAXI AND DEPARTURE FOR YMEN, 3 POB WITH D”.

9.4.3 ATC will provide a clearance to AIR TAXI and depart from the FATO when appropriate. To assist traffic management, pilots are requested to minimise time at the FATO.

9.4.4 If NOT departing from the AMDA FATO, contact Avalon Ground on 129.3 MHz prior to start and advise location on the airport and flight intentions.

- 9.4.5 ATC will not issue frequency change instructions. When leaving R979, squawk 1200 and change frequency.

## **10. VFR ARRIVALS FROM THE WEST (FIXED WING ONLY)**

- 10.1 All aircraft must remain in VMC.
- 10.2 DO NOT OVERTAKE and DO NOT CUT CORNERS unless instructed by ATC.
- 10.3 Obtain the Avalon ATIS on VHF 118.2 MHz at least 20NM from YMAV and monitor Avalon Tower on 120.1 MHz (do not transmit).
- 10.4 Inbound aircraft should arrive from the Anakie direction, or due west of Barwon Prison (BPN), 1,500FT or below. Clearance to enter TRA R979 is required from Avalon Tower. Do not proceed beyond 8NM Avalon (YMAV) without a clearance. High-speed jet aircraft may be operating just inside the western boundary. Expect extensive delays during show times.
- 10.5 Contact Avalon Tower 120.1 MHz at 10NM AV. Advise callsign, type, BPN, altitude, inbound, received [ATIS Information].
- 10.6 If a clearance is available, Avalon Tower will issue entry instructions in the format: "ABC, join [circuit leg] RWY [18/36]". This instruction authorises the pilot to join the nominated runway in accordance with the procedures detailed below or as otherwise instructed.
- 10.7 If a clearance is not immediately available, or two-way communication with Avalon Tower cannot be established, remain outside R979.
- 10.8 Avalon Tower will confirm the runway in use, traffic to follow (if required) and a taxiway to vacate the runway.

### **10.9 Circuit Entry RWY 18**

*Refer to Appendix 6*

- Track to BPN at 1,500FT. Watch for other traffic also converging towards BPN.
- From BPN track 080° MAG for right base RWY 18. Do not overfly Lara township.
- At BPN commence descent to circuit height. ATC will not issue a visual approach instruction.
- In the event of a go-around, overfly the runway (DO NOT DRIFT LEFT, offset right if required). Then maintain upwind until advised by ATC.

- Pilots are requested to plan their touchdown point to minimise runway occupancy.
- Vacate the runway via the taxiway assigned by ATC. If unable to vacate at your assigned taxiway, continue rolling straight ahead and notify ATC as soon as practicable. Do not backtrack without a clearance, as there may be landing traffic behind you.

### **10.10 Circuit Entry RWY 36**

*Refer to Appendix 6*

- Track to BPN at 1,500FT. Watch for other traffic also converging towards BPN.
- From BPN track 142° MAG to the WOOL STORE (AWH Warehouse, Lara) for a close left base RWY 36. Do not overfly Lara township or Geelong Grammar.
- At BPN commence descent to circuit height. ATC will not issue a visual approach instruction.
- Remain over land, north of Corio Bay (there may be overflying IFR traffic at 2,500FT commencing descent over Corio Bay).
- In the event of a go-around, overfly the runway (DO NOT DRIFT RIGHT, offset left if required). Then maintain upwind until advised by ATC.
- Pilots are requested to plan their touchdown point to minimise runway occupancy.
- Vacate the runway via the taxiway assigned by ATC. If unable to vacate at your assigned taxiway, continue rolling straight ahead and notify ATC as soon as practicable. Do not backtrack without a clearance, as there may be landing traffic behind you.

## **11. VFR ARRIVALS FROM THE EAST (FIXED WING ONLY)**

- 11.1 All aircraft must remain in VMC.
- 11.2 DO NOT OVERTAKE and DO NOT CUT CORNERS unless instructed by ATC.
- 11.3 Obtain the Avalon ATIS on VHF 118.2 MHz and then, at least 10NM from Werribee South (WBES), monitor Avalon Tower (120.1 MHz). Do not transmit.
- 11.4 At WBES, at 2,000FT, contact Avalon Tower (120.1 MHz) and advise callsign, aircraft type, WBES, altitude, inbound, received [ATIS Information].

- 11.5 If a clearance is available, Avalon Tower will issue entry instructions in the format: "ABC, join [circuit leg] RWY [18/36]". This instruction authorises the pilot to join the nominated runway in accordance with the procedures detailed below or as otherwise instructed.
- 11.6 If a clearance is not immediately available, or two-way communication with Avalon Tower cannot be established, remain outside R979.
- 11.7 Avalon Tower will confirm the runway in use, traffic to follow (if required) and a taxiway to vacate the runway.

### **11.8 Circuit entry RWY 18**

*Refer Appendix 7*

- From WBES track 250° MAG remaining north of the BP service station on the northern side of the Princes Freeway then track for final RWY 18.
- Once established in R979, descend when ready to circuit height. (ATC will not issue a visual approach instruction).
- Do not descend below 1,000FT until established north of the BP service station. (Helicopters will be operating up to 300M either side of the freeway at 600FT).
- DO NOT OVERTAKE and DO NOT CUT CORNERS unless instructed by ATC.
- In the event of a go-around, overfly the runway (DO NOT DRIFT LEFT, offset right if required). Maintain upwind until advised by ATC.
- Pilots are requested to plan their touchdown point to minimise runway occupancy.
- Vacate the runway via the assigned taxiway assigned by ATC. If unable to vacate at your assigned taxiway, continue rolling straight ahead and notify ATC as soon as practicable. Do not backtrack without a clearance, as there may be landing traffic behind you.

### **11.9 Circuit entry RWY 36**

*Refer Appendix 7*

- From WBES follow the coast to Point Wilson.
- When west of Little River Mouth (LRM), descend when ready to circuit height. (ATC will not issue a visual approach instruction).

- From Point Wilson join right base RWY 36, remaining over water until established on final (helicopters will be operating east of the airfield along Pousties Rd at 600FT).
- DO NOT OVERTAKE and DO NOT CUT CORNERS unless instructed by ATC.
- In the event of a go-around, overfly the runway (DO NOT DRIFT RIGHT, offset left if required). Then maintain upwind until advised by ATC.
- Pilots are requested to plan their touchdown point to minimise runway occupancy time.
- Vacate the runway via the assigned taxiway assigned by ATC. If unable to vacate at your assigned taxiway, continue rolling straight ahead and notify ATC as soon as practicable. Do not backtrack without a clearance, as there may be landing traffic behind you.

## **12. VFR DEPARTURES**

### **12.1 General**

- VFR departures will not be permitted until the completion of air displays.
- At the conclusion of Avalon 2025 on Sunday 30 March, there will be a period of VFR-only departures from 1700 to 1800 Local.

### **12.2 Before Engine Start**

- Flight notification is not required for operation in R979.
- Airways clearance to enter adjacent Class C airspace will not be available from Avalon Tower. Vacate R979 using the VFR departure procedures. Once clear you may contact Melbourne Centre to request an airways clearance.
- Refer to VFR departure chart in Appendix 5.

### **12.3 After Start**

- Obtain the Avalon ATIS on 118.2 MHz.
- Contact Avalon Ground on 129.3 MHz for a taxi clearance, stating your callsign and that you are VFR. Follow the marshaller's instructions to the exit point of the apron and proceed to the assigned holding point.

## 12.4 Approaching Holding Point

- Squawk 1000.
- When Number 1, report ready to Avalon Tower on 120.1 MHz in the form: "(call-sign) (aircraft type) READY RUNWAY (number) TAXIWAY (intersection) VFR REQUEST LEFT/RIGHT turn". E.g. "MWZ, KINGAIR, READY RUNWAY 18, HOLDING POINT CHARLIE, VFR, REQUEST LEFT TURN".
- Do not backtrack without a clearance. Advise ATC if any backtrack is required and advise desired departure point.
- If RWY 36 is in use, ATC may backtrack multiple light aircraft at once. Backtrack on the right side (west-side) of the runway. At the instructed point, turn left and line up on the other side of the runway (east-side) in sequence. Do NOT depart until cleared.

## 12.5 VFR Departures RWY 18 to the East.

- Climb to 1,500FT.
- Maintain runway heading until established over water.
- Turn left and track to Point Wilson.
- From Point Wilson: turn NE and depart over water adjacent to the coast; or turn south and depart towards Clifton Springs.
- ATC will not issue frequency change instructions. Squawk 1200 and change frequency leaving R979. (Melbourne Centre 135.7 MHz, Point Cook/YMPC CTAF 126.2 MHz).

## 12.6 VFR Departures RWY 18 to the West.

- Climb to 2,000FT.
- Maintain runway heading until established over water.
- Turn right onto a westerly heading until crossing the western shore of Corio Bay.
- At 8NM AV you may turn south or maintain a westerly heading. Maintain 2,000FT.
- ATC will not issue frequency change instructions. Squawk 1200 and change frequency leaving R979 (Melbourne Centre 126.8 MHz or 123.55 MHz as appropriate).

**12.7 VFR Departures RWY 36 to East**

- Climb to 1,500FT.
- Maintain upwind until reaching the Melbourne-Geelong railway line.
- Turn right and follow the railway line to depart R979.
- ATC will not issue frequency change instructions. Squawk 1200 and change frequency leaving R979. (Melbourne Centre 135.7 MHz, Point Cook/YMPC CTAF 126.2 MHz).

**12.8 VFR Departures RWY 36 to West**

- Climb to 2,000FT.
- Maintain upwind until passing 1,000FT and north of the freeway.
- Turn left onto a westerly heading. (Do not overtake the preceding aircraft).
- At 8NMAV you may turn south or maintain a westerly heading. Maintain 2,000FT.
- ATC will not issue frequency change instructions. Squawk 1200 and change frequency leaving R979 (Melbourne Centre 126.8 MHz or 123.55 MHz as appropriate).

**13. RECREATIONAL AIRCRAFT OPERATIONS**

- 13.1 All recreational aircraft intending to operate within R979 or take off or land at Avalon (i.e. as part of a static display) are required to contact AMDA Aircraft Operations for prior approval.
- 13.2 Recreational pilots must have a current RAAus, HGFA or ASRA pilot certificate with Radio Operator endorsement to operate within R979 at all times.
- 13.3 Authorised aircraft may operate in R979 provided they comply with the following:
- a) Obtain current YMAV ATIS; and
  - b) If operating to Avalon Airport, operate in accordance with the VFR procedures above, including ensuring that a clearance to enter the TRA is also obtained from ATC.



## 14. DISPLAY AREA

- 14.1 The display area airspace is contained within a 5NM arc to the west of TWY A.
- 14.2 Refer to the chart in Appendix 9.
- 14.3 High speed aerobatic displays will be conducted in this area. Display operations will be conducted on a discrete radio frequency.

## 15. VISUAL HOLDING AREAS (DISPLAY AIRCRAFT ONLY)

- 15.1 Visual holding areas have been established within the airspace to facilitate efficient show management.
- 15.2 Pilots must ensure they remain clear of the Display Area at all times whilst operating within these holding areas.
- 15.3 Pilots are responsible for ensuring they remain within controlled airspace.
- 15.4 **Caution:** Parachute operations take place at Barwon Heads ALA close to the southern airspace boundary.
- 15.5 Do not descend below the holding area's minimum altitude without ATC clearance. There may be traffic below in the area operating on a different frequency.
- 15.6 Detailed information is available to display pilots in the Pilot Briefing Notes.
- 15.7 Holding areas are established at these locations (refer to Appendix 10 and pilot briefing notes):

North hold – Flinders Peak – minimum altitude 3,000FT

South hold – Point Henry – minimum altitude 3,000FT

Close northeast hold – 2NM NE – minimum altitude 2,000FT

Close southeast hold – 2NM SE – minimum altitude 2,000FT

## **16. ADDITIONAL HOLDING AREAS (R979DE)**

16.1 Australian Defence Force (ADF) aircraft may be required to hold to facilitate display timings. In the event of IMC, these aircraft may also require manoeuvring for an instrument approach prior to conducting a display. For this purpose, 2 additional restricted airspace volumes have been designated for Avalon 2025 as follows:

- a) R979D – Southwest Area for pre-display holding; and
- b) R979E – Northern Area for manoeuvring in IMC. This area is wholly contained within existing controlled (Class C) airspace.

The dimensions for these areas are depicted in Appendix 3 and specified in Appendix 4.

16.2 TRAR979DE will be activated by YMMM NOTAM for periods of approximately 4 hours (subject to change) for each ADF practice and display session. Class D ATS (as per *AIP ENR 1.1 section 2.2.7*) will be provided in all TRA airspace.

## **17. CANCELLATION**

17.1 This SUP self-cancels at 202503310700 UTC.

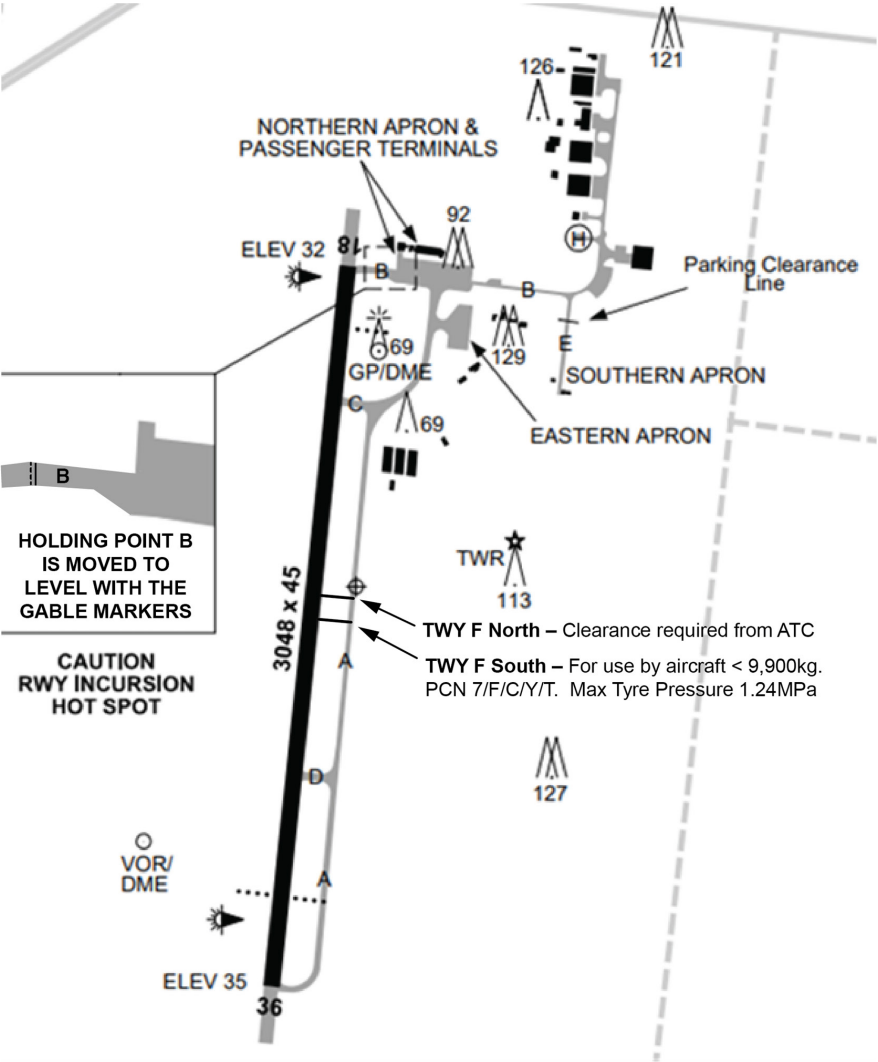
## **18. DISTRIBUTION**

18.1 Airservices Australia website only.

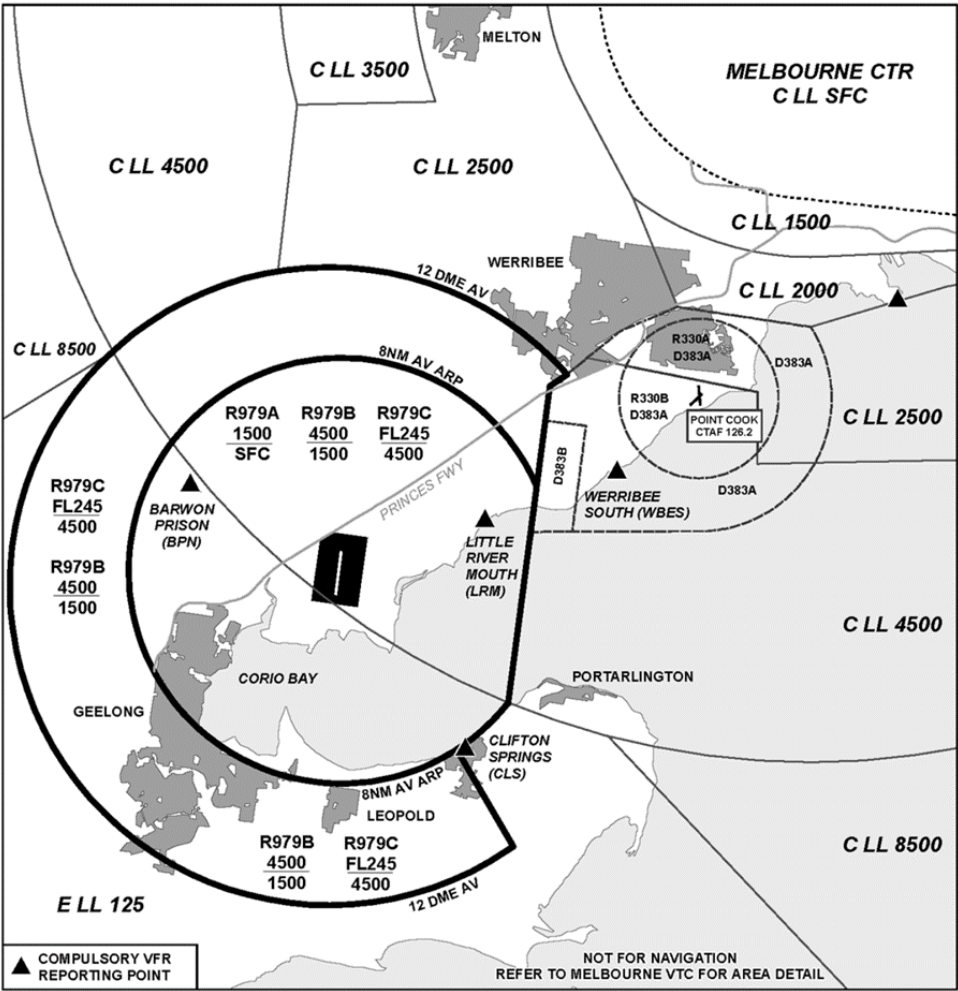
## Appendices

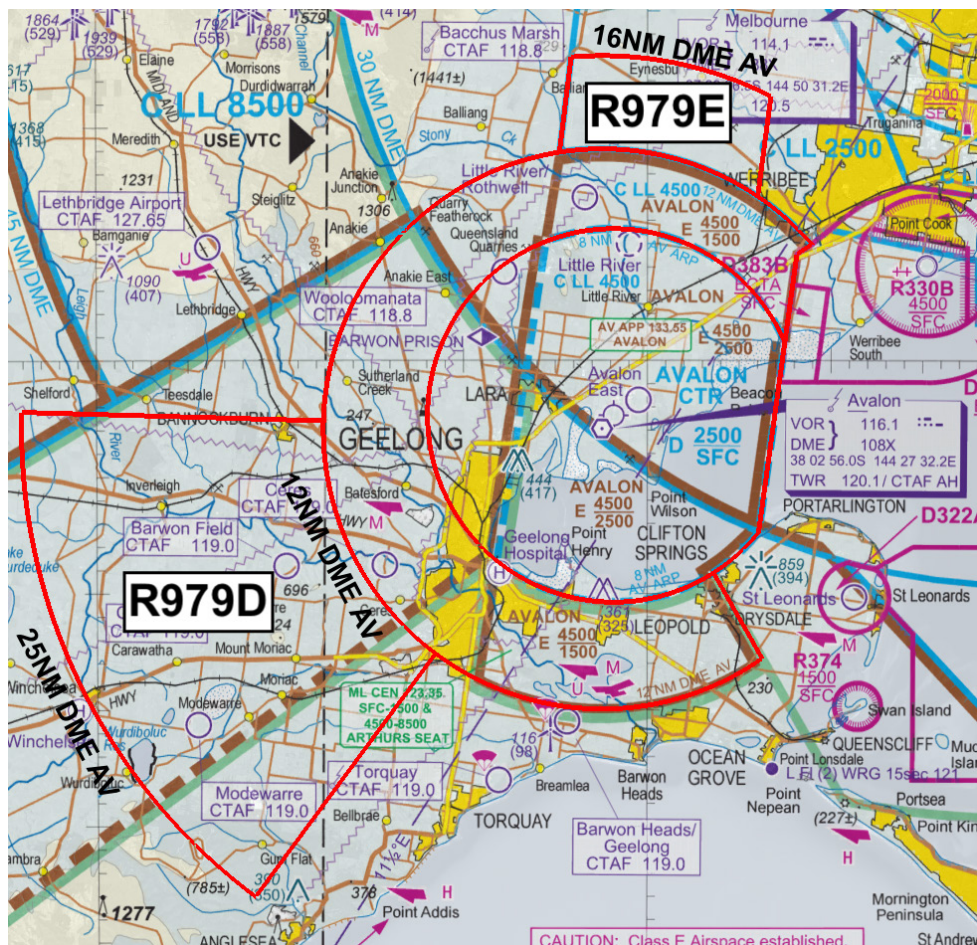
1. Avalon Airshow Airport Diagram
2. Avalon Airshow Airspace (TRA R979ABC)
3. Additional Holding Areas (TRA R979DE)
4. R979ABCDE Designation
5. VFR Departure Paths for Avalon Airport RWY 18/36
6. Western Circuit Entry RWY 18/36
7. Werribee South Circuit Entry RWY 18/36
8. Helicopter FATO & Parking Area – Prior Briefing Required
9. Display Area
10. Visual Holding Areas (Display Pilots Only)
11. Obstacles within the Obstacle Restricted Area
12. Obstacles Penetrating the 1:7 Transitional Surface

1. Avalon Airshow Airport Diagram



2. Avalon Airshow Airspace (TRA R979ABC)





#### **4. R979ABCDE Designation**

**YMMM/TRA R979A**

**AIR DISPLAY**

**CONDITIONAL STATUS:** RA2

**LATERAL LIMITS:** 375914S 1443729E - 380722S 1443605E

then along the clockwise arc of a circle radius 8.00NM centre

380222S 1442810E (YMAV/AD) - 375914S 1443729E

**VERTICAL LIMITS:** SFC - 1500

**HOURS OF ACTIVITY:** Activated via NOTAM

**CONTROLLING AUTHORITY:** AMDA Foundation Ltd

**CONTACT:** AMDA Aviation Operations Centre: +61 439 834 460

**YMMM/TRA R979B**

**AIR DISPLAY**

**CONDITIONAL STATUS:** RA2

**LATERAL LIMITS:** 381247S 1443617E

then along the clockwise arc of a circle radius 12.00NM centre

380257S 1442733E (AV/DME) to 375500S 1443857E

375526S 1443808E - 380722S 1443605E

then along the clockwise arc of a circle radius 8.00NM centre

380222S 1442810E (YMAV/AD) to 380907S 1443338E - 381247S 1443617E

**VERTICAL LIMITS:** 1500 - 4500

**HOURS OF ACTIVITY:** Activated via NOTAM

**CONTROLLING AUTHORITY:** AMDA Foundation Ltd

**CONTACT:** AMDA Aviation Operations Centre: +61 439 834 460

**YMMM/TRA R979C**

**AIR DISPLAY**

**CONDITIONAL STATUS:** RA2

**LATERAL LIMITS:** 381247S 1443617E

then along the clockwise arc of a circle radius 12.00NM centre

380257S 1442733E (AV/DME) to 375500S 1443857E

375526S 1443808E - 380722S 1443605E

then along the clockwise arc of a circle radius 8.00NM centre

380222S 1442810E (YMAV/AD) to 380907S 1443338E - 381247S 1443617E

**VERTICAL LIMITS:** 4500 - FL245

**HOURS OF ACTIVITY:** Activated via NOTAM

**CONTROLLING AUTHORITY:** AMDA Foundation Ltd

**CONTACT:** AMDA Aviation Operations Centre: +61 439 834 460

**YMMM/TRA R979D**

**AIR DISPLAY**

**CONDITIONAL STATUS:** RA2

**LATERAL LIMITS:** 381235S 1441828E - 382301S 1440836E

then along the clockwise arc of a circle radius 25.00NM centre

380257S 1442733E (AV/DME) to 380211S 1435555E - 380235S 1441222E then  
along the counter clockwise arc of a circle radius 12.00NM centre

380257S 1442733E (AV/DME) to 381235S 1441828E

**VERTICAL LIMITS:** 8500 - FL245

**HOURS OF ACTIVITY:** Activated via NOTAM

**CONTROLLING AUTHORITY:** AMDA Foundation Ltd

**CONTACT:** AMDA Aviation Operations Centre: +61 439 834 460



**YMMM/TRA R979E**

**AIR DISPLAY**

**CONDITIONAL STATUS:** RA2

**LATERAL LIMITS:** 374659S 1442551E

then along the clockwise arc of a circle radius 16.00NM centre

380257S 1442733E (AV/DME) to 374840S 1443643E - 375258S 1443600E then  
along the counterclockwise arc of a circle radius 12.00NM centre

380257S 1442733E (AV/DME) - 375104S 1442513E - 374659S 1442551E

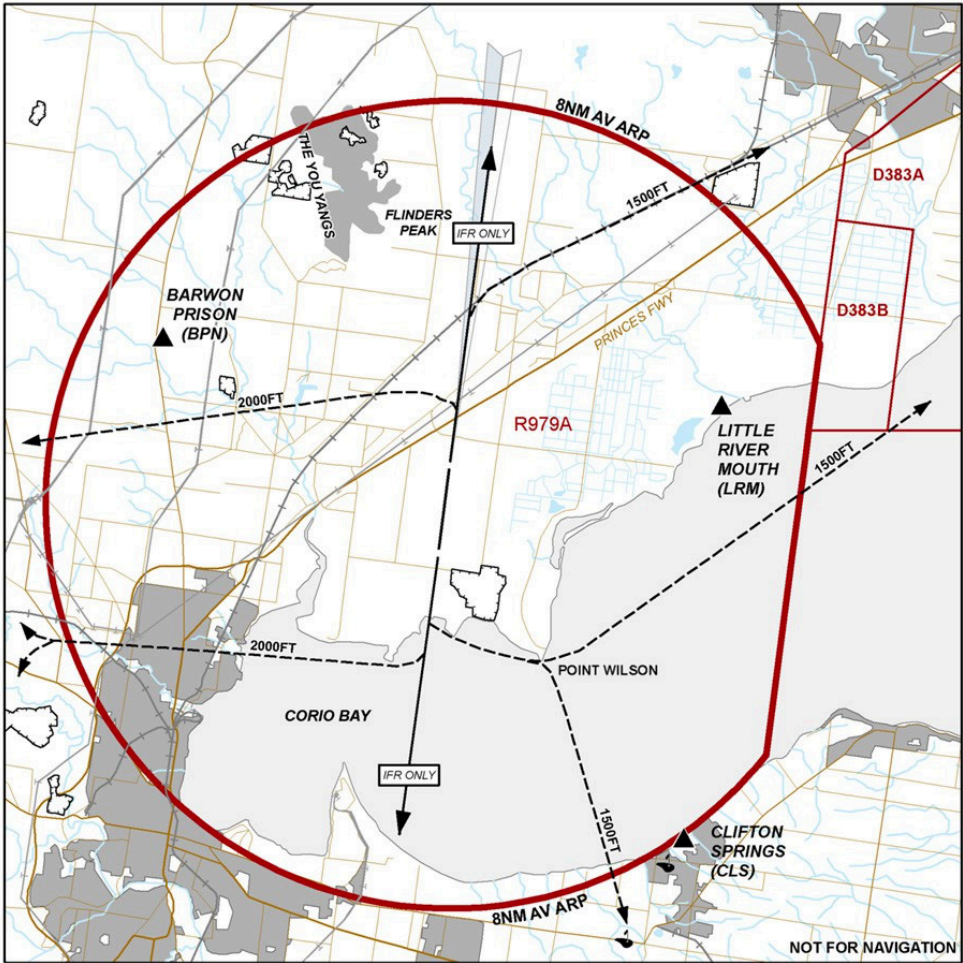
**VERTICAL LIMITS:** 2500 - 4500

**HOURS OF ACTIVITY:** Activated via NOTAM

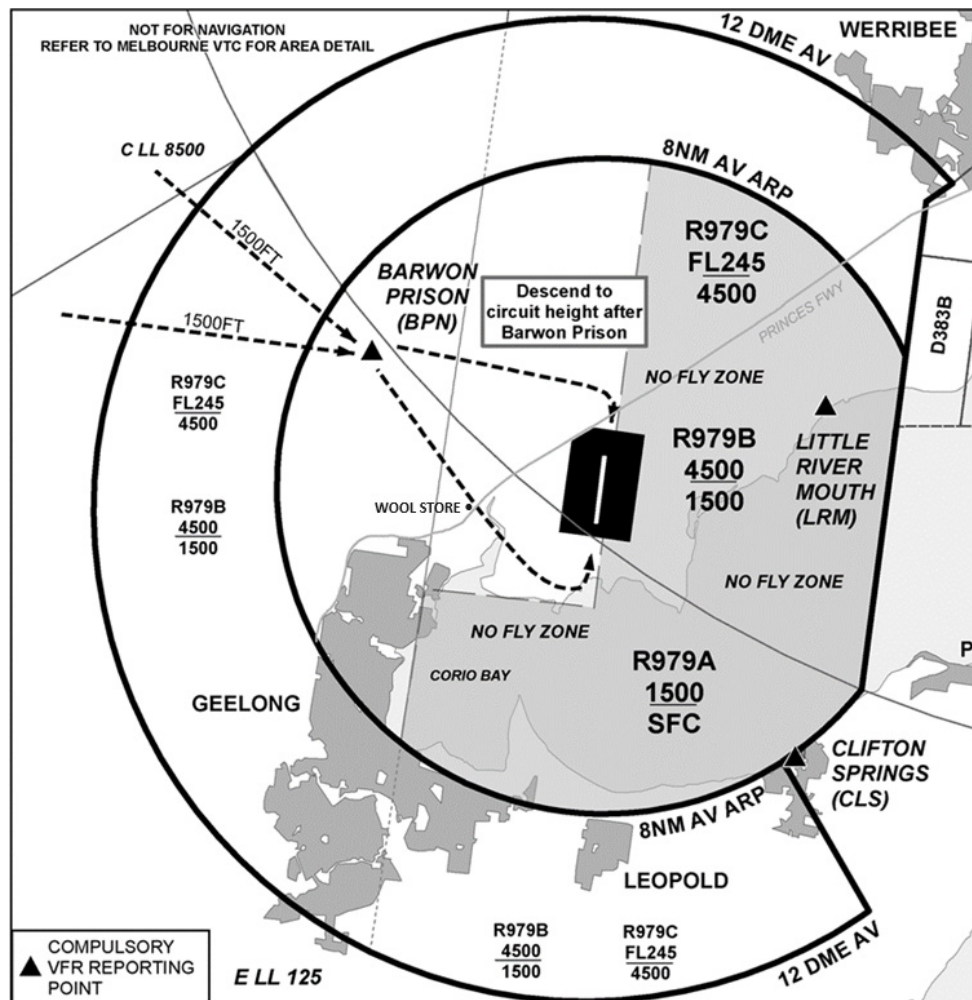
**CONTROLLING AUTHORITY:** AMDA Foundation Ltd

**CONTACT:** AMDA Aviation Operations Centre: +61 439 834 460

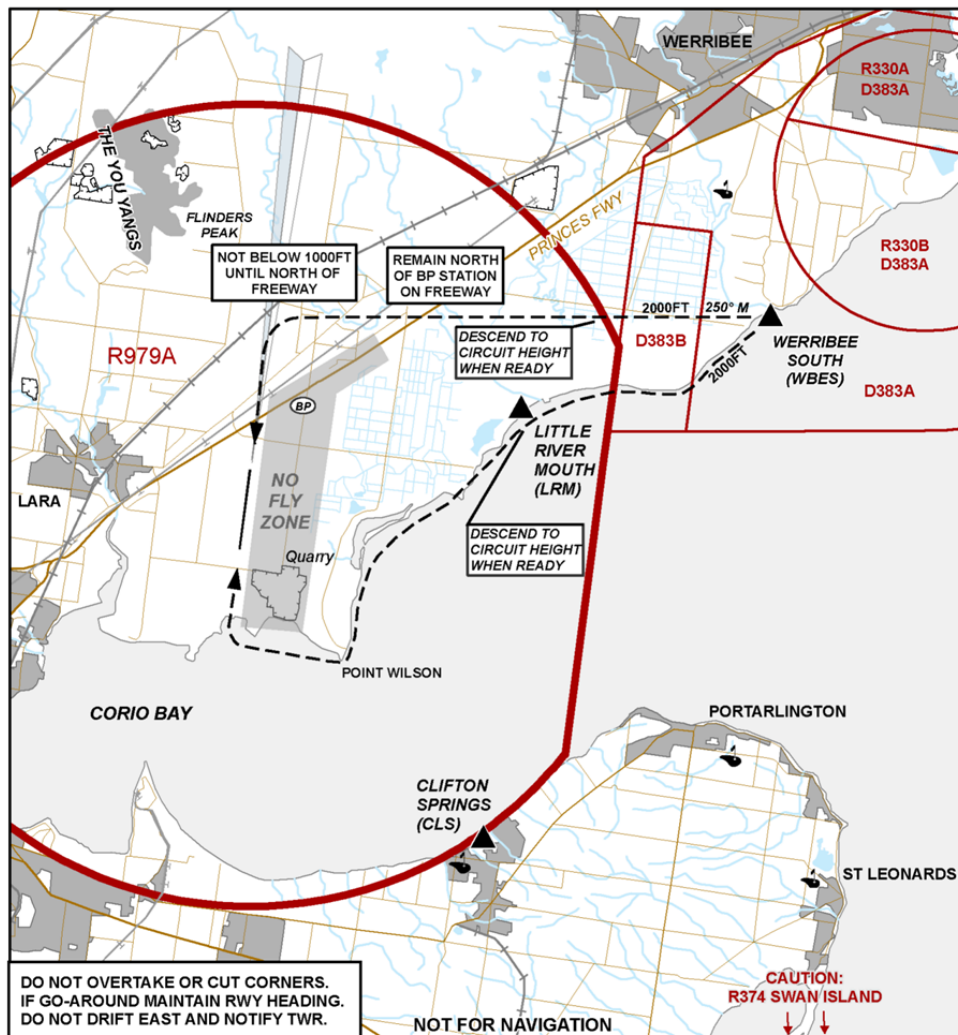
5. VFR Departure Paths for Avalon Airport RWY 18/36



# 6. Western Circuit Entry RWY 18/36

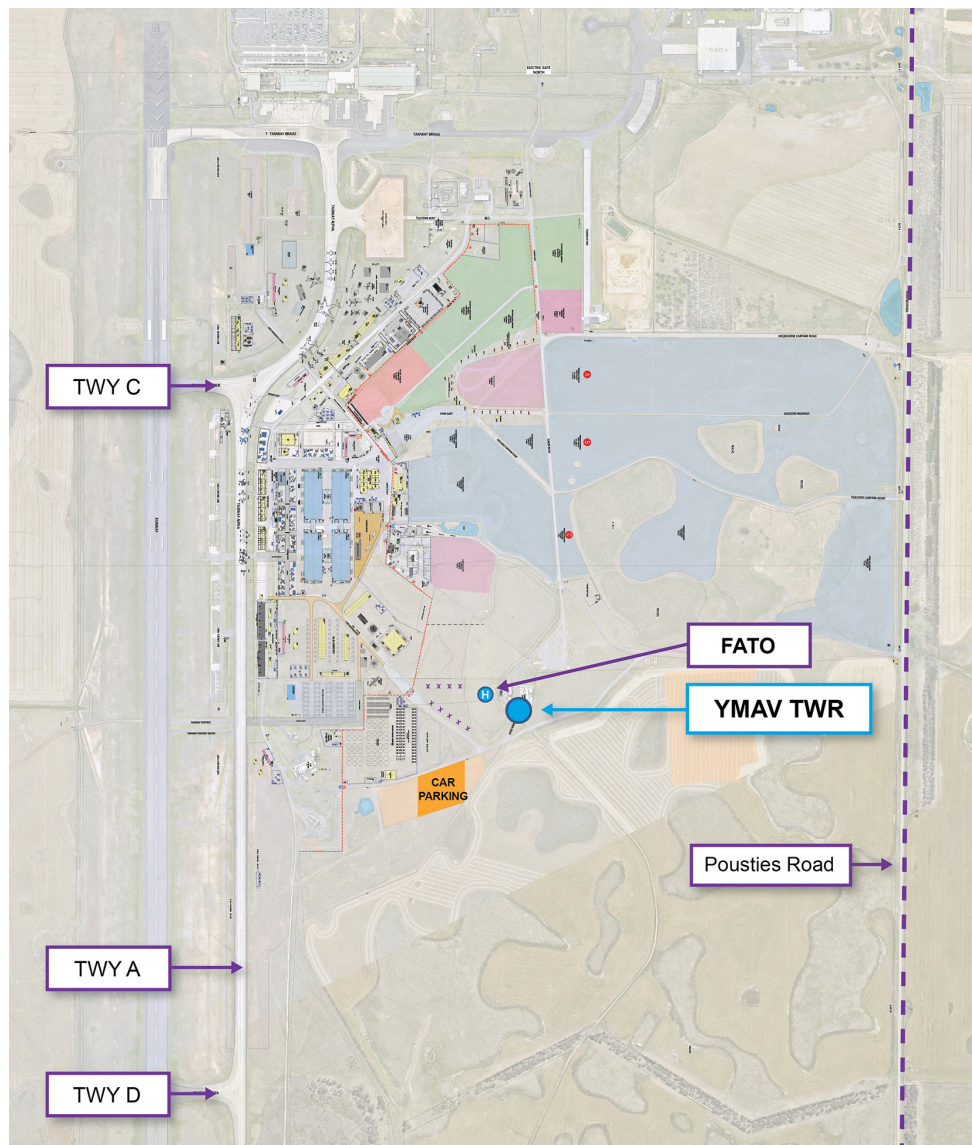


# 7. Werribee South Circuit Entry RWY 18/36

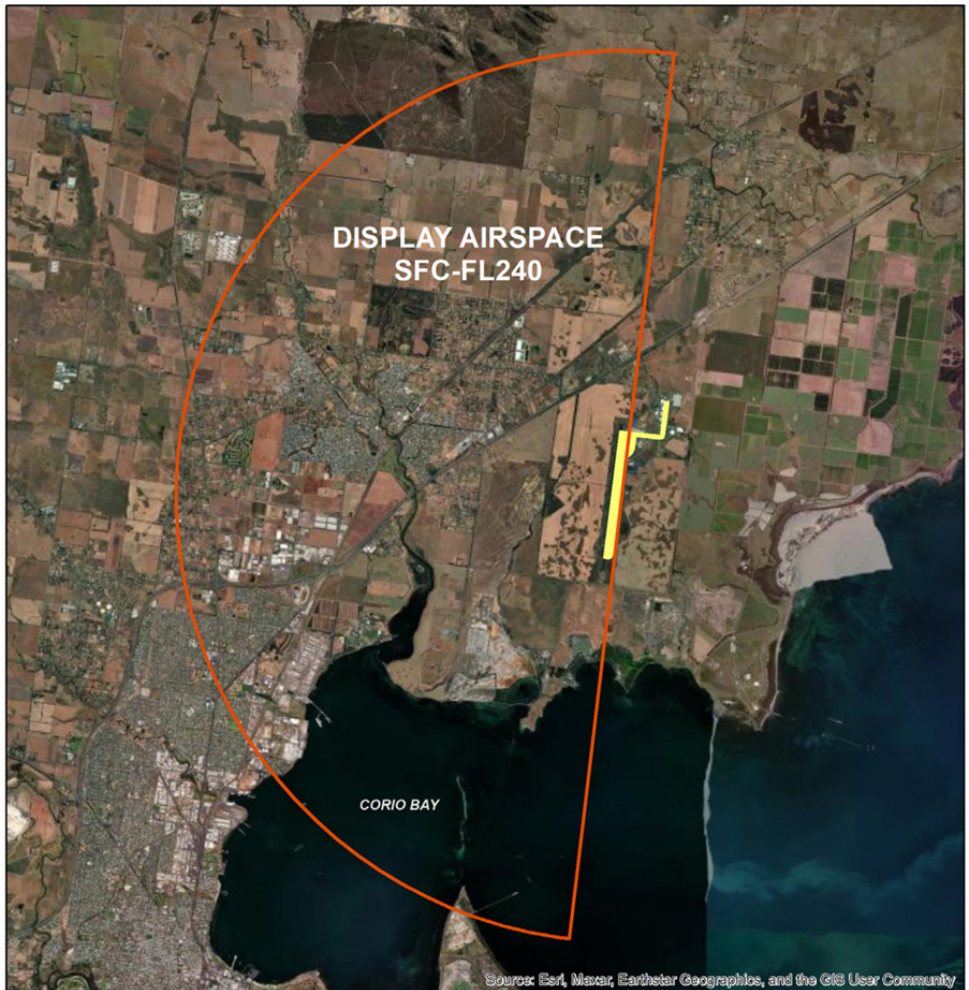




**8. Helicopter FATO & Parking Area – Prior Briefing Required**

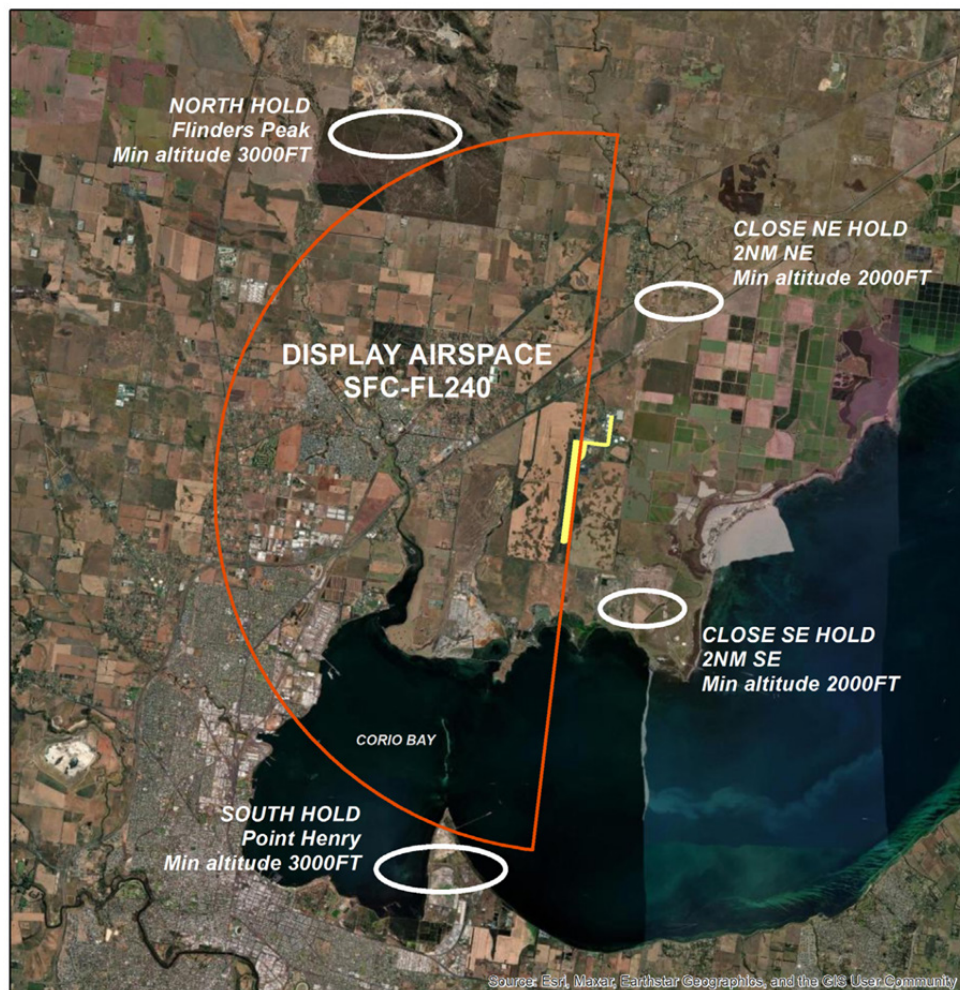


**9. Display Area**





**10. Visual Holding Areas (Display Pilots Only)**



## **11. Obstacles within the Obstacle Restricted Area**

<b>Obstacles as stated on Master Layout</b>	<b>Distance from centreline to closest point on obstacle</b>	<b>Height above ground level (AGL)</b>	<b>Penetration of 1:20 flyover gradient</b>
ASA Antenna	142M	9M	5.97M
Airservices Camera - power box (small)	87.6M	0.720M	0.720M
Airservices Camera – ARFFS Monitoring of runway. No ATC feed. (large)	87.6M	1.970M	1.970M
FOC Building	142M	6M	2.97M
BAK 12 Arrestor	85M both side of RWY	2M	2M
Media viewing area (0971)	148M	3.5M	0.17M
Marveloo	141M	3.1M	0.12M
AC unit	141M	2.8M	0M
Speaker Poles	140M	3M	0M
AGO Area Manager (0030)	147M	3M	0M
GEN	144M	2.8M	0M
Toilets (007, 008, 009, 0010)	151M /149.5M/ 148M/146.5M	2.3M	0M
Fence around FOC compound	142M	1.8M	0M
Hydration station (0034)	150M	1.7M	0M
Accessible Viewing platform (0001) – 15mm mat may be laid if ground is wet.	141M	On ground	0M
Crowd Line Fence – star pickets with FOD barrier mesh attached via a top and bottom wire. Fencing length approx. 1.1KM.	140M	1M	0M
Crowd	140M-150M	Various	0M



## **12. Obstacles Penetrating the 1:7 Transitional Surface**

<b>Obstacles as stated on Master Layout</b>	<b>Distance from centreline to closest point on obstacle</b>	<b>Height above ground level (AGL)</b>	<b>Penetration of 1:7 transitional surface</b>
AGO Container (0029)	152M	2.59M	1.52M
AGO Store (0003)	152M	3M	1.93M
FOC Yellow shelter Charlie (0005)	155M	3M	1.51M
Accessible toilet (0002)	150M	2.5M	1.72M
Marquee (0011) – gazebo type structure	153M	4M	2.79M
First Aid Post 5 (0004)	159M	3M	0.93M
SEM Merch (0012)	159M	2.89M	0.82M
Hydration station (0033)	154.5M	1.7M	0.28M
Hydration station (0034)	150M	1.7M	0.92M
Chalets	175M	5.2M	0.30M