

**AIP SUPPLEMENT
(SUP)****AIRAC****H90/24****Effective: 202408071600 UTC**

AERONAUTICAL INFORMATION SERVICE,
AIRSERVICES AUSTRALIA, GPO BOX 367,
CANBERRA ACT 2601

For **DISTRIBUTION** queries, contact:
Email: aim_editorial@airservicesaustralia.com

For **CONTENT** queries regarding this SUP, contact:
Email: ifp@airservicesaustralia.com

GOLD COAST AIRPORT (YBCG) RWY 32 TEMPORARY INSTRUMENT APPROACH PROCEDURES

1. INTRODUCTION

- 1.1 This AIP SUP implements temporary approach procedures for Gold Coast Airport (YBCG) RWY 32.
- 1.2 The Pacific Airshow will be held between 15-18 August and requires temporary amended approach procedures to avoid TRA R930A and R930B.
- 1.3 New RNP APCH and RNP AR APCH procedures have been designed to use during the airshow. The RNP APCH approach procedure has the suffix 'T' and the RNP AR have suffixes "R" and "S".
- 1.4 The RWY 32 procedures published in this SUP are to be used only when the TRA YBBB/R930A GOLD COAST or TRA YBBB/R930B GOLD COAST are active. A NOTAM will be issued to indicate when these TRA are active. The existing RNP Z, RNP Y(AR) and RNP X(AR) are not to be used when these TRA are active.
- 1.5 RWY 32 instrument approach procedures are not available when TRA R930C, R930D, R930E are active. A NOTAM will be issued to indicate when these TRA are active.
- 1.6 The existing STAR to RWY 32 remain unchanged and will be used with the procedures in the appendices.
- 1.7 Recommended coding sheets for these temporary procedures are available on request.

2. WAYPOINTS

2.1 New waypoints required for temporary procedures:

CG480	280845.18S	1532938.26E	
CG490	280436.91S	1533108.01E	
CG2SR	280237.63S	1533555.18E	
CG481	280717.93S	1533232.98E	RF Arc Centre

3. CANCELLATION

3.1 This SUP self-cancels at 202408180900 UTC.

4. DISTRIBUTION

4.1 Airservices Australia website only.

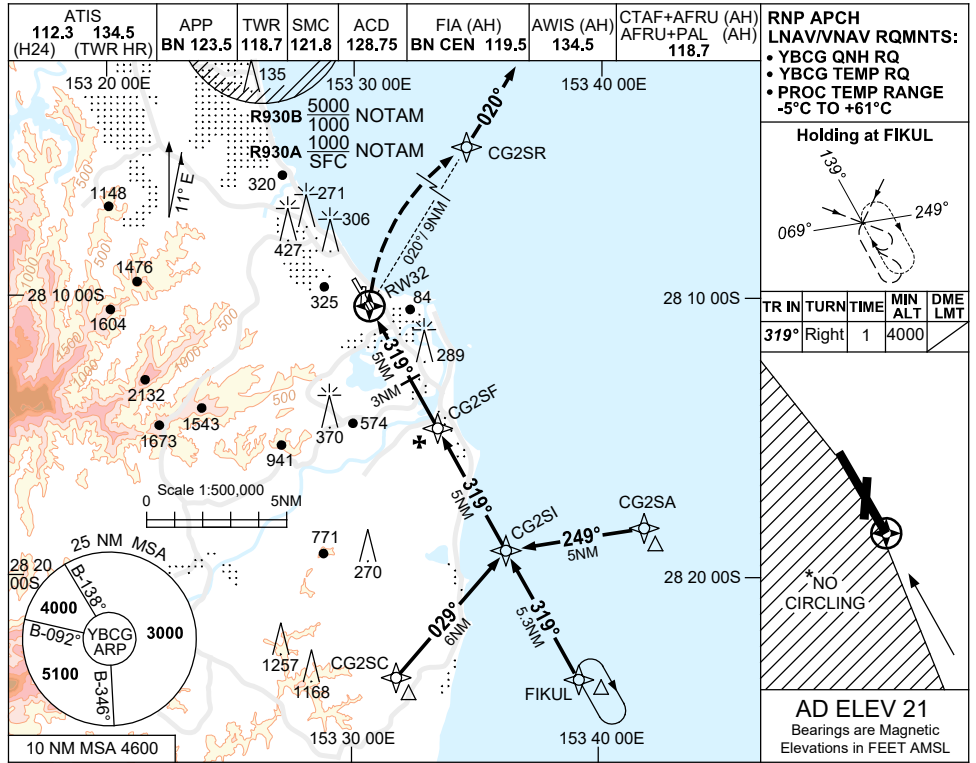
Appendices

1. RNP T RWY 32
2. RNP R RWY 32 (AR)
3. RNP S RWY 32 (AR)

**APPENDIX 1
TO SUP H90/24**

USE QNH

**RNP T RWY 32
GOLD COAST, QLD (YBCG)**



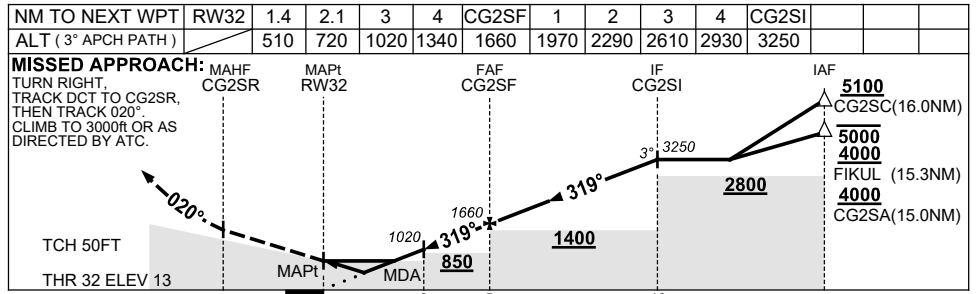
**RNP APCH
LNAV/VNAV RQMNTS:**

- YBCG QNH RQ
- YBCG TEMP RQ
- PROC TEMP RANGE -5°C TO +61°C

Holding at FIKUL

TR	IN	TURN	TIME	MIN ALT	DME LMT
319°	Right	1	4000		

AD ELEV 21
Bearings are Magnetic
Elevations in FEET AMSL



CATEGORY	A	B	C	D
LNAV/VNAV		510 (497-2.8)		
LNAV		720 (707-4.0)		
CIRCLING *	860 (839-2.4)		960 (939-4.0)	960 (939-5.0)
ALTERNATE	(1339-4.4)		(1439-6.0)	(1439-7.0)

- NOTES**
1. MAX IAS : INITIAL : 210KT.
 - * 2. NO CIRCLING WEST OF RWY 14/32.
 3. COLOUR: SEE SPEC NOTICES.

Changes: NEW PROC.

BCGGN99-SUP

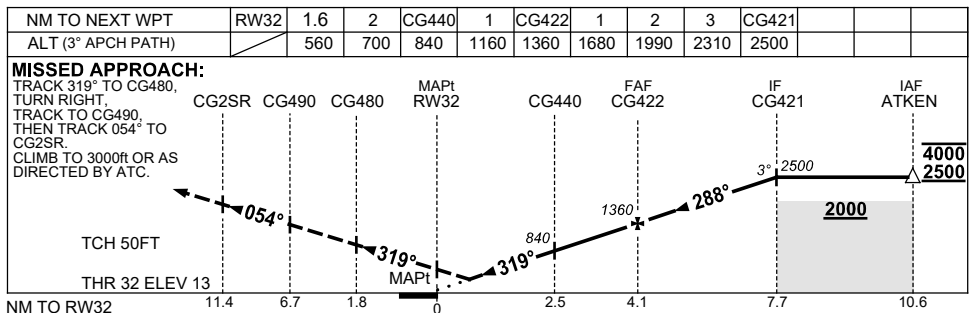
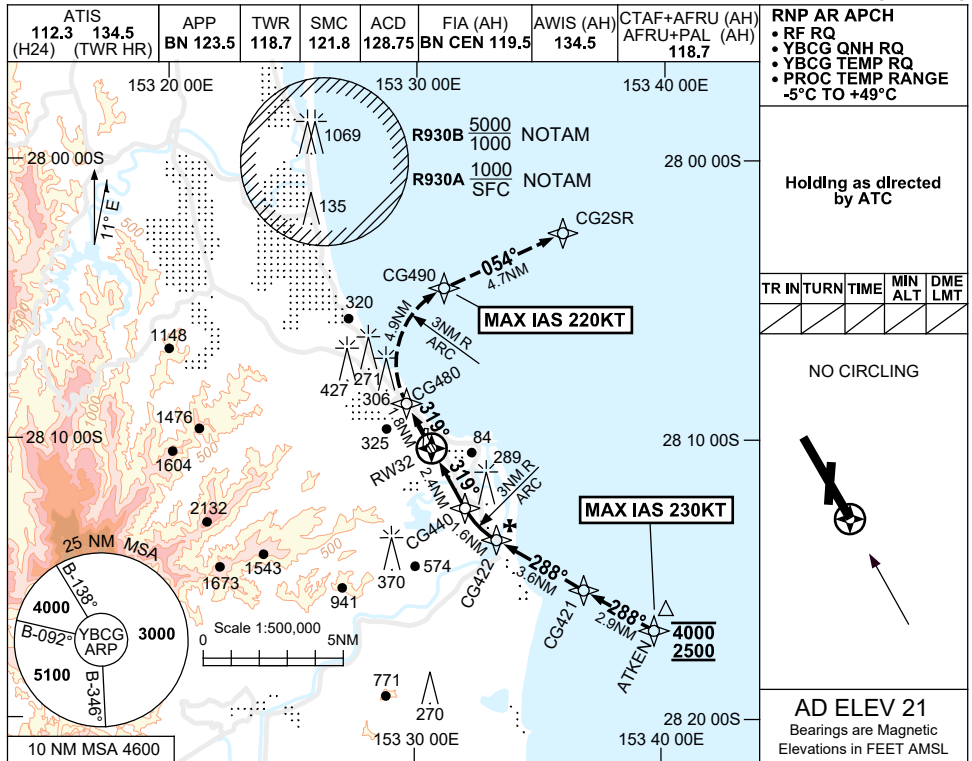
FOR CASA APPROVED OPERATORS ONLY

APPENDIX 2
TO SUP H90/24

USE QNH

RNP R RWY 32 (AR)

GOLD COAST, QLD (YBCG)



NOTES

CATEGORY	A	B	C	D
RNP 0.3	560 (547-3.1)			
CIRCLING	NOT AUTHORISED			
ALTERNATE	(1239-4.4)	(1339-6.0)		(1339-7.0)

1. MAX IAS:
ATKEN : 230KT.
CG490 : 220KT.
2. COLOUR: SEE SPEC NOTICES.

Changes: NEW PROC.

BCGGN98-SUP

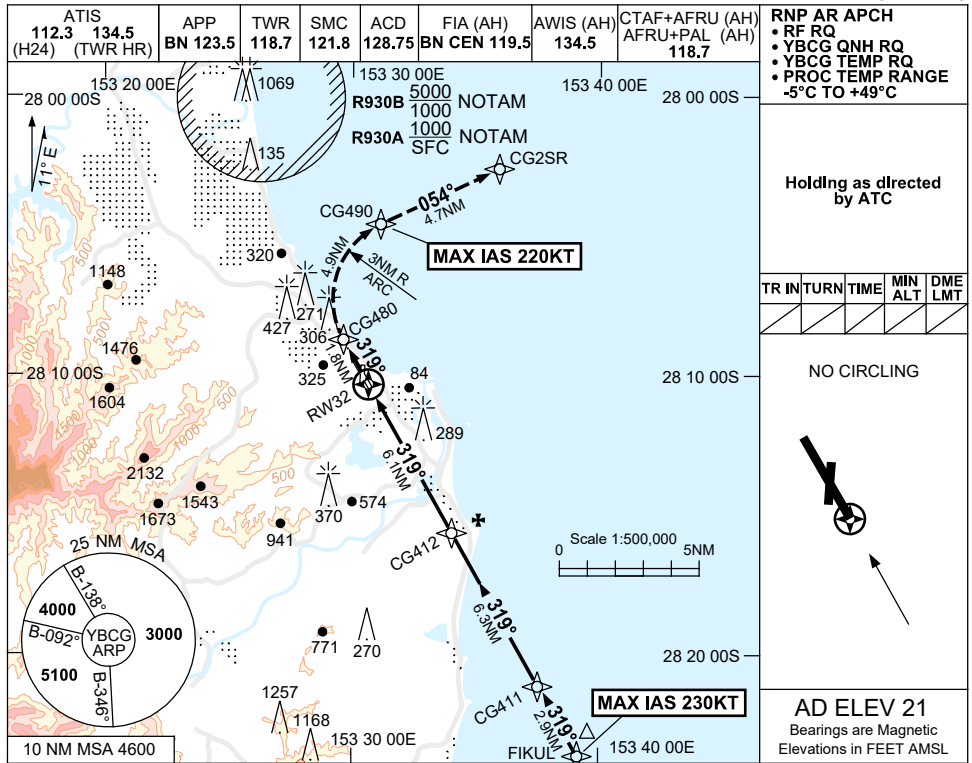
FOR CASA APPROVED OPERATORS ONLY

USE QNH

RNP S RWY 32 (AR)

APPENDIX 3
TO SUP H90/24

GOLD COAST, QLD (YBCG)

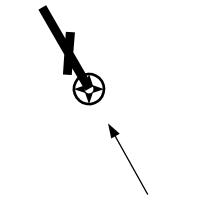


RNP AR APCH
• RF RQ
• YBCG QNH RQ
• YBCG TEMP RQ
• PROC TEMP RANGE
-5°C TO +49°C

Holding as directed by ATC

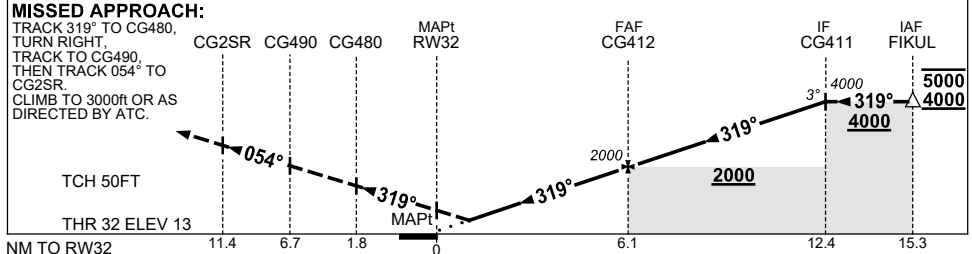
TR	IN	TURN	TIME	MIN ALT	DME LMT

NO CIRCLING



AD ELEV 21
Bearings are Magnetic
Elevations in FEET AMSL

NM TO NEXT WPT	RW32	1.6	2	3	4	5	CG412	1	2	3	4	CG411		
ALT (3° APCH PATH)		560	700	1020	1340	1660	2000	2320	2640	2960	3270	4000		



NOTES

CATEGORY	A	B	C	D
RNP 0.3	560 (547-3.1)			
CIRCLING	NOT AUTHORISED			
ALTERNATE	(1239-4.4)		(1339-6.0)	(1339-7.0)

- MAX IAS:
FIKUL : 230KT.
CG490 : 220KT.
- COLOUR: SEE SPEC NOTICES.

Changes: NEW PROC.

BCGGN97-SUP