

**AIP SUPPLEMENT  
(SUP)****H83/24****Effective: 202406170600 UTC**

AERONAUTICAL INFORMATION SERVICE,  
AIRSERVICES AUSTRALIA, GPO BOX 367,  
CANBERRA ACT 2601

For **DISTRIBUTION** queries, contact:  
Email: [aim\\_editorial@airservicesaustralia.com](mailto:aim_editorial@airservicesaustralia.com)

For **CONTENT** queries regarding this SUP, contact:  
Email: [glen.dodds@adgnt.com.au](mailto:glen.dodds@adgnt.com.au)

# **DARWIN (YPDN) RWY 11/29 RECONSTRUCTION PROJECT: OPERATIONAL RESTRICTIONS DURING WORKS – STAGES 15, 16B, 17A AND 17B**

## **1. INTRODUCTION**

- 1.1 This SUP cancels and replaces SUP H75/24 with amended Declared Distances and Gradient Changes to RWY 11 for Stages 15, 16B, 17A and 17B. In addition to this, a new section 9 has been inserted and Stage 16 details have been removed due to completion.
- 1.2 This SUP provides operational information for users of Darwin Airport (YPDN) during Stages 15, 16B, 17A and 17B of the RWY 11/29 Reconstruction Project.
- 1.3 These stages include the closure of TWY E1, and temporary displaced thresholds for RWY 11/29 allow for culvert construction, pavement reinstatement, airfield lighting and power supply. Commencement of each stage will be notified by NOTAM.
- 1.4 It is essential that pilots ensure they understand displaced threshold markings and the associated requirements of displaced threshold operations. Pilots are reminded to check YPDN NOTAM during works to ensure they are using the correct RWY distances.

## 2. REFERENCES

- 2.1 Method of Working Plan – MOWP 23/02 Version 2.3  
<https://www.darwinairport.com.au/business/planning-development/method-working-plans>
- 2.2 Refer to the AIP SUP on <https://www.airservicesaustralia.com/aip/aip.asp>
- Darwin Aerodrome (YPDN) Ongoing Provision of Aerodrome Flight Information Service (AFIS)
  - Military Exercise ‘Diamond Storm’ Northern Territory and Western Australia 05 - 26 June 2024
  - Military Exercise ‘Pitch Black’ Northern Territory 15 July - 1 August 2024

## 3. STAGE 15

- 3.1 This stage will be in operation 0200 to 1130 Local (1630 to 0200 UTC), commencing 04 June to 13 July 2024.
- 3.2 Works include removal and reconstruction of RWY 11/29 pavement, installation of aeronautical ground lighting and drainage works.
- 3.3 *CASA Approval 07/24* - Equipment to 4.5M high permitted in flyover area 75M to 84M from RWY CL.
- 3.4 *CASA Approval 07/24* - Equipment to 8M high permitted in flyover area 84M to 150M from RWY CL.
- 3.5 RWY 11/29 Details:
- RWY 11 threshold displaced 1,934M
  - RWY 11/29 1,874M western end closed.

	<b>TORA</b>	<b>TODA</b>	<b>ASDA</b>	<b>LDA</b>
<b>RWY 11</b>	1480 (4856)	1570 (5151) (2.16)	1480 (4856)	1420 (4659)
<b>RWY 29</b>	1420 (4659)	1480 (4856) (4.0)	1420 (4659)	1420 (4659)

<b>Supplementary Takeoff Distances</b>					
<b>RWY 11</b>	1163 (3816) (1.6)		1395 (4577) (1.9)		
<b>RWY 29</b>	1199 (3934) (1.6)	1274 (4180) (1.9)	1337 (4387) (2.2)	1381 (4531) (2.5)	1450 (4757) (3.3)

## 3.6 Taxiway Details:

- TWY A1, B1, B2, E1, E2 and V2 Closed.
- TWY Z west of TWY V1 and C4 marked with temporary blue edge lights to TWY C3; and yellow hold point lights for RWY 18/36 for access HN.

## 3.7 Access to/from RWY 11/29 via TWY C3, C4 and Z.

## 3.8 Pavement concession approved for TWY Z and TWY C4 for aircraft operating up to maximum operating weight 42 tonnes.

**4. STAGE 17A**

## 4.1 This stage will be in operation H24 or 1130 to 0200 Local (0200 to 1630 UTC) when concurrent with Stage 15, commencing 10 June to 27 June 2024; and H24 13 July to 04 August 2024

## 4.2 Stage 17A works include removal and reconstruction of RWY 11/29 pavement, installation of aeronautical ground lighting and drainage works.

4.3 *CASA Approval 07/24* - Equipment to 4.5M high permitted in flyover area 75M to 84M from RWY CL.4.4 *CASA Approval 07/24* - Equipment to 8M high permitted in flyover area 84M to 150M from RWY CL.

## 4.5 RWY 11/29 Details:

- RWY 11 Displaced Threshold 723M
- RWY 11/29 573M western end closed

	<b>TORA</b>	<b>TODA</b>	<b>ASDA</b>	<b>LDA</b>
<b>RWY 11</b>	2781 (9124)	2871 (9412) (2.16)	2781 (9124)	2631 (8632)
<b>RWY 29</b>	2721 (8927)	2781 (9124) (2.0)	2721 (8927)	2721 (8927)

<b>Supplementary Takeoff Distances</b>		
<b>RWY 11</b>	2464 (8085) (1.6)	2696 (8846) (1.9)
<b>RWY 29</b>	2710 (8891) (1.6)	2766 (9075) (1.9)

4.6 **Caution** when backtracking for RWY 11 Departure or following Arrival RWY 29. Avoid making tight 180 DEG turn.

## 4.7 Taxiway Details:

- TWY A1 Closed.

4.8 When THR RWY 11 Displaced: RWY 29 intersection departure from TWY E2 available to light single engine aircraft only, twin engine aircraft and above can expect to depart RWY 29 from TWY D or A6.

## 5. STAGE 16B

5.1 This stage will be in operation H24 or 1130 to 0200 Local (0200 to 1630 UTC) when concurrent with Stage 15, commencing 27 June to 13 July 2024.

5.2 Stage 16B works include removal and reconstruction of RWY 11/29 pavement, installation of aeronautical ground lighting and drainage works.

5.3 *CASA Approval 07/24* - Equipment to 4.5M high permitted in flyover area 75M to 84M from RWY CL.

5.4 *CASA Approval 07/24* - Equipment to 8M high permitted in flyover area 84M to 150M from RWY CL.

5.5 RWY 11/29 Details:

- RWY 11 Displaced Threshold 723M.
- RWY 11/29 680M Western end closed.

	TORA	TODA	ASDA	LDA
<b>RWY 11</b>	2674 (8774)	2764 (9069) (2.16)	2674 (8774)	2631 (8632)
<b>RWY 29</b>	2614 (8577)	2674 (8774) (2.0)	2614 (8577)	2614 (8577)

<b>Supplementary Takeoff Distances</b>			
<b>RWY 11</b>		2357 (7733) (1.6)	2589 (8495) (1.9)
<b>RWY 29</b>		2593 (8508) (1.6)	2661 (8731) (1.9)

5.6 **Caution** when backtracking for RWY 11 Departure or following Arrival RWY 29. Avoid making tight 180 DEG turn.

5.7 Taxiway Details:

- TWY A1 Closed.

5.8 When THR RWY 11 Displaced: RWY 29 intersection departure from TWY E2 available to light single engine aircraft only, twin engine aircraft and above can expect to depart RWY 29 from TWY D or A6.

## 6. STAGE 17B

- 6.1 This stage will be in operation 1900 to 0600 Local (0930 to 2030 UTC) commencing from 15 July to 04 August 2024. All other times revert to Stage 17A.
- 6.2 Stage 17B works include removal and reconstruction of RWY 11/29 pavement, installation of aeronautical ground lighting and drainage works. Maintenance pavement works to RWY 18/36 as per the locations marked in the Stage 17B drawing.
- 6.3 *CASA Approval 07/24* - Equipment to 4.5M high permitted in flyover area 75M to 84M from RWY CL.
- 6.4 *CASA Approval 07/24* - Equipment to 8M high permitted in flyover area 84M to 150M from RWY CL.
- 6.5 RWY 11/29 Details:
- RWY 11 Displaced Threshold 723M
  - RWY 11/29 573M western end closed

	TORA	TODA	ASDA	LDA
<b>RWY 11</b>	2781 (9124)	2871 (9412) (2.16)	2781 (9124)	2631 (8632)
<b>RWY 29</b>	2721 (8927)	2781 (9124) (2.0)	2721 (8927)	2721 (8927)

<b>Supplementary Takeoff Distances</b>		
<b>RWY 11</b>	2464 (8085) (1.6)	2696 (8846) (1.9)
<b>RWY 29</b>	2710 (8891) (1.6)	2766 (9075) (1.9)

- 6.6 **Caution** when backtracking for RWY 11 Departure or following Arrival RWY 29. Avoid making tight 180 DEG turn.
- 6.7 RWY 18/36 Closed.
- 6.8 Taxiway Details:
- TWY A1, C1, C3, C4 Closed.
- 6.9 When THR RWY 11 Displaced: RWY 29 intersection departure from TWY E2 available to light single engine aircraft only, twin engine aircraft and above can expect to depart RWY 29 from TWY D or A6.

## 7. PREFERRED TAXI ROUTING

7.1 Given the significant impact the RWY works will have on taxiway access, the following preferred taxi routes to/from the Air Transport and General Aviation Aprons are designed to reduce conflicts as much as possible. Adherence to these preferred routes is encouraged during AFIS periods and will be applied by Darwin ATC at other times unless deviations are required for operational reasons.

### 7.2 Stage 15

Departures RWY 11	Taxi to Z, cross RWY 18/36, taxi to A2 via C4 and C3, cross RWY 18/36, taxi to D via A, backtrack for departure as per ATC* instructions.
Arrivals RWY 11	Vacate A6, taxi to A3, cross RWY 18/36, taxi to C4 via C3, cross RWY 18/36 as per ATC* instructions.
Departures RWY 29	Taxi to Z, cross RWY 18/36, taxi to A2 via C4 and C3, cross RWY 18/36, taxi to A6 for departure as per ATC* instructions.
Arrivals RWY 29	Backtrack (as required) and vacate D, taxi to A3, cross RWY 18/36 taxi to C4 via C3, cross RWY 18/36 taxi to as per ATC* instructions.
Departures RWY 18	Nil restrictions taxiing to from RWY 18/36 – taxi for arrivals and departures RWY 18/36 as per ATC* instructions.
Arrivals RWY 18	
Departures RWY 36	
Arrivals RWY 36	

\* Refer AIP SUP Darwin Aerodrome (YPDN) Ongoing Provision of Aerodrome Flight Information Service (AFIS), Section 3. AFIS Procedures, for departures and arrivals during AFIS between 2200-0600 Local (1230-2030 UTC).

*Note: Temporary blue taxiway edge lighting TWY Z west of TWY V1, and C4 to C3 and marked with Runway Guard Lights or temporary yellow hold point lights RWY 18/36 for access to from RWY 11/29 HN.*

*The section of RWY 11/29 between TWY C3 and C4 is classified as taxiway during Stage 15.*

### 7.3 Stage 17A

Departures RWY 11	Access to/from RWY 11/29 available via TWYs V2, B1, B2, E1, E2, D and A6 – back track as required - taxi for departures and arrivals as per ATC* instructions.
Arrivals RWY 11	
Departures RWY 29	RWY 18/36 marked with temporary blued edge and yellow hold point lights between runway intersection and TWY A available for military aircraft for access to/from RWY11/29.
Arrivals RWY 29	
Departures RWY 18	Nil restrictions taxiing to from RWY 18/36 – taxi for arrivals and departures RWY 18/36 as per ATC* instructions.
Arrivals RWY 18	
Departures RWY 36	
Arrivals RWY 36	

\* Refer AIP SUP Darwin Aerodrome (YPDN) Ongoing Provision of Aerodrome Flight Information Service (AFIS), Section 3. AFIS Procedures, for departures and arrivals during AFIS between 2200-0600 Local (1230-2030 UTC); or 2300-0600 Local (1330-2030 UTC) from 12 to 26 June 2024.

### 7.4 Stage 16B

Departures RWY 11	Taxi to V2, B1, B2 or E, E2 backtrack RWY 11 (if required) as per ATC* instructions.
Arrivals RWY 11	Vacate A6 (or D), taxi to apron via B1, B2 or E1, E2 as per ATC* instructions.
Departures RWY 29	Taxi to B2 or E2 cross RWY 29 taxi to A6 or D as per ATC* instructions.
Arrivals RWY 29	Backtrack (as required) vacate V2, B1/B2 or E1/E2 taxi to apron as per ATC* instructions
Departures RWY 18	Nil restrictions taxiing to from RWY 18/36 – taxi for arrivals and departures RWY 18/36 as per ATC* instructions.
Arrivals RWY 18	
Departures RWY 36	
Arrivals RWY 36	

\* Refer AIP SUP Darwin Aerodrome (YPDN) Ongoing Provision of Aerodrome Flight Information Service (AFIS), Section 3. AFIS Procedures, for departures and arrivals during AFIS between 2200-0600 Local (1230-2030 UTC).

## 7.5 Stage 17B

Departures RWY 11	Access to/from RWY 11/29 available via TWYs V2, B1, B2, E1, E2, D and A6 – back track as required - taxi for departures and arrivals as per ATC* instructions.
Arrivals RWY 11	
Departures RWY 29	RWY 18/36 marked with temporary blued edge and yellow hold point lights between runway intersection and TWY A available for military aircraft for access to/from RWY11/29.
Arrivals RWY 29	
Departures RWY 18	Runway 18/36 Closed.
Arrivals RWY 18	
Departures RWY 36	
Arrivals RWY 36	

\* Refer AIP SUP Darwin Aerodrome (YPDN) Ongoing Provision of Aerodrome Flight Information Service (AFIS), Section 3. AFIS Procedures, for departures and arrivals during AFIS between 2200-0600 Local (1230-2030 UTC).

## 8. MILITARY EXERCISE DIAMOND STORM 2024 (DSM24)

- 8.1 DSM24 is a major Royal Australian Air Force (RAAF) exercise incorporating a wide range of tactical flying activities across northern Australia from 05 to 26 June and includes aircraft operating from Darwin over the period 12 to 26 June 2024.
- 8.2 Due to increased congestion, P0009 aerodrome works, and the nature of high-density military fast-jet operations, aircraft should anticipate delays.
- 8.3 Refer to AIP SUP Military Exercise ‘Diamond Storm’ for additional information regarding restrictions to operations, military priority windows and supporting procedures for DSM24.



## **9. MILITARY EXERCISE ‘PITCH BLACK’ 2024 (PBK24)**

- 9.1 Elements of Australian and international military forces will be conducting exercise Pitch Black 2024 (PBK24) over the period 15 July to 01 August 2024.
- 9.2 PBK24 involves a wide range of tactical flying exercises across northern Australia with aircraft operating from Darwin, Tindal, Curtin and Amberley.
- 9.3 Increased military operations at Darwin may cause delays.
- 9.4 Refer to AIP SUP H77/24 - Military Exercise ‘Pitch Black’ Northern Australia on the Airservices website for additional information regarding airspace, timings, access and procedures associated with PBK24.

## **10. CONTACT**

- 10.1 For further information contact:

Glen Dodds

Head of Airside Operations

[glen.dodds@adgnt.com.au](mailto:glen.dodds@adgnt.com.au)

## **11. CANCELLATION**

- 11.1 This SUP cancels when Stages 15, 16A, 17A and 17B are complete, expected August 2024.

## **12. DISTRIBUTION**

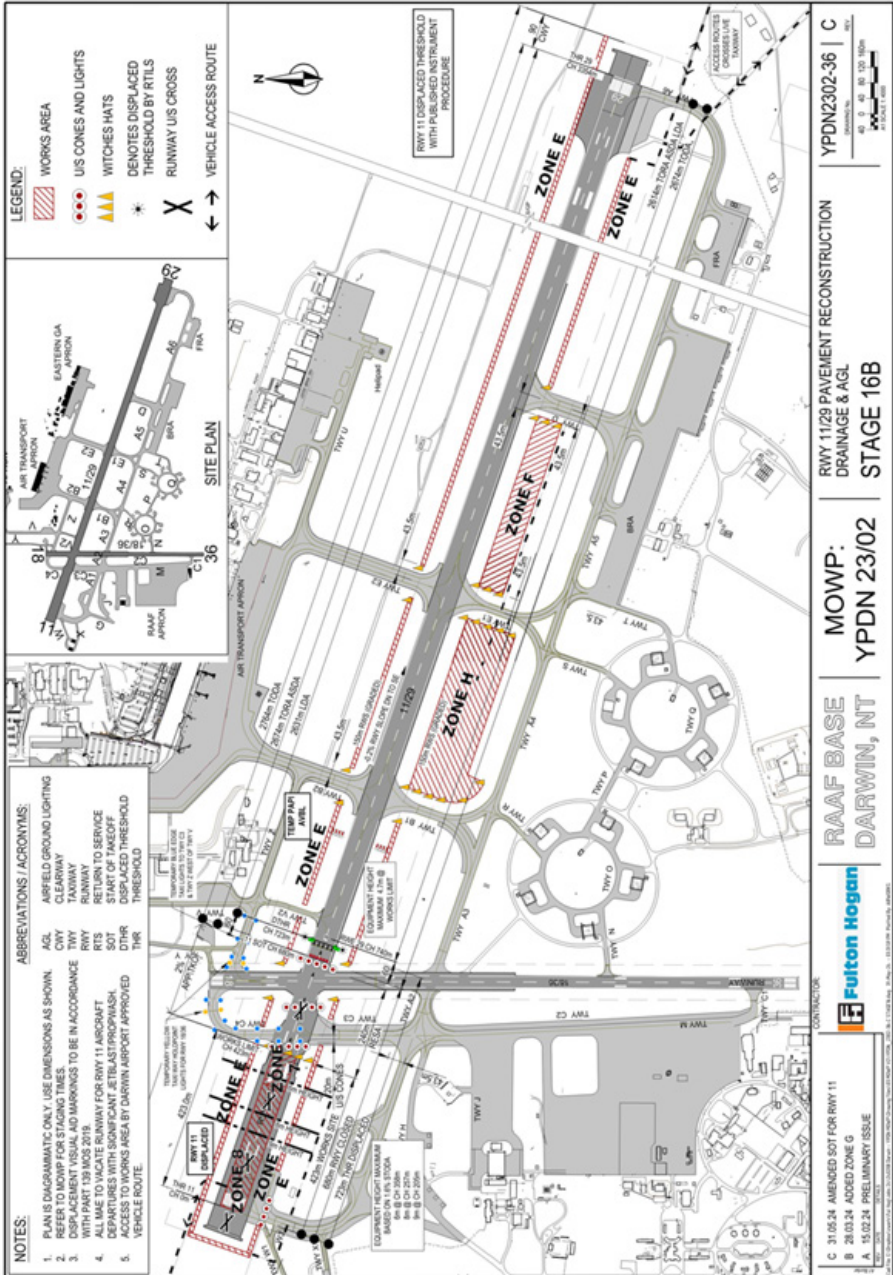
- 12.1 Airservices Australia website only.

## **Appendices**

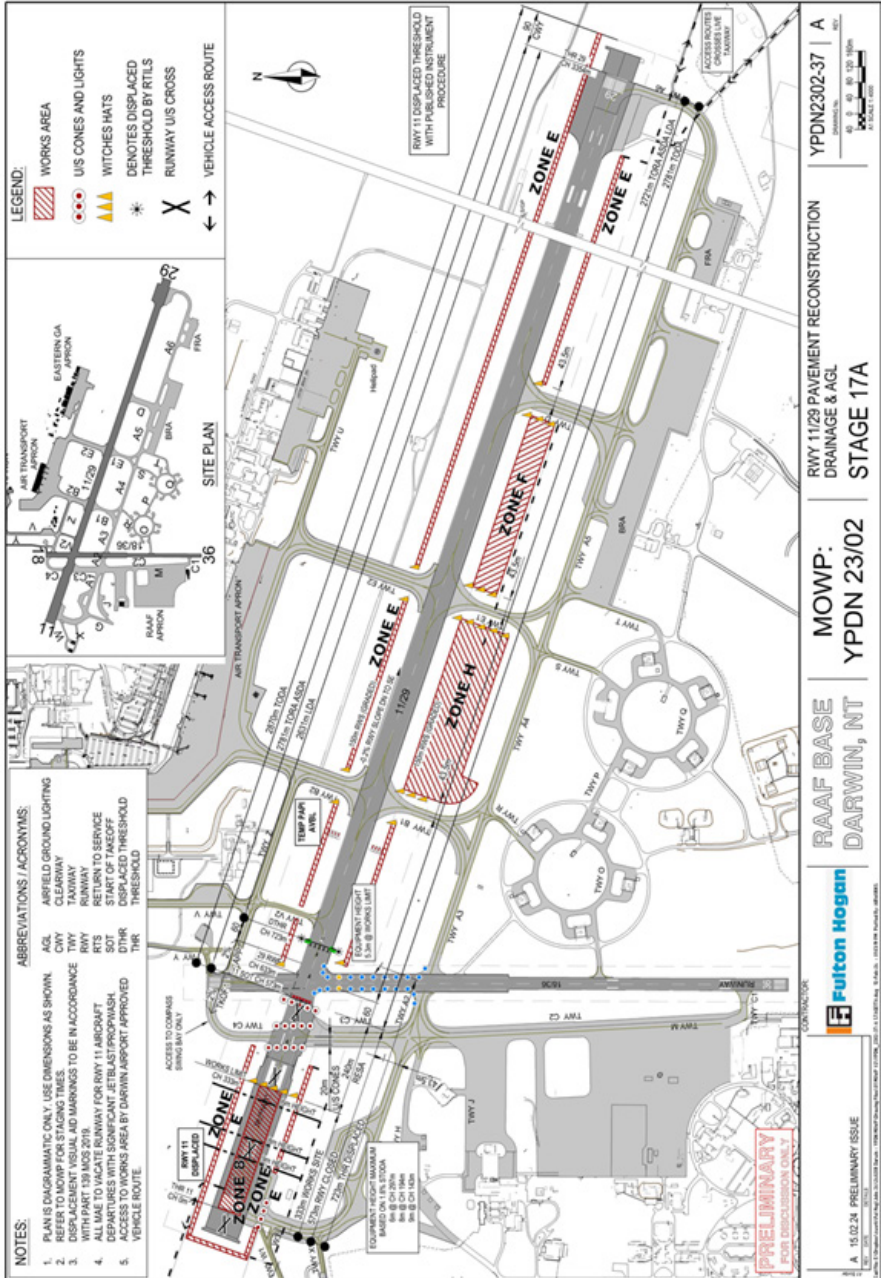
- 1. Stage 15 Works
- 2. Stage 16B Works
- 3. Stage 17A Works
- 4. Stage 17B Works



2. Stage 16B Works



3. Stage 17A Works



4. Stage 17B Works

