

**AIP SUPPLEMENT  
(SUP)****AIRAC****H74/24****Effective: 202406121600 UTC**AERONAUTICAL INFORMATION SERVICE,  
AIRSERVICES AUSTRALIA, GPO BOX 367,  
CANBERRA ACT 2601For **DISTRIBUTION** queries, contact:  
Email: [aim\\_editorial@airservicesaustralia.com](mailto:aim_editorial@airservicesaustralia.com)For **CONTENT** queries regarding this SUP, contact:Email: [fpdo.au@idscorporation.com](mailto:fpdo.au@idscorporation.com)**WEST MUSGRAVE (YWMO)  
NEW DAP PROCEDURES****1. INTRODUCTION**

- 1.1 This AIP SUP introduces new DAP procedures at West Musgrave (YWMO) aerodrome.

**2. IMPLEMENTATION**

- 2.1 The procedures in the appendices become effective 202406121600 UTC.
- 2.2 Recommended coding sheet for RNP RWY 09 and RNP RWY 27 are available on request.

**3. WAYPOINTS**

- 3.1 YWMO RNP RWY 09 waypoints are as follows:

<b>MV2WD</b>	260743.98S	1272753.40E	IAF RIGHT
<b>MV2WE</b>	260258.79S	1272417.67E	IAF CENTRE
<b>MV2WG</b>	255818.51S	1272800.27E	IAF LEFT
<b>MV2WF</b>	260305.72S	1273523.85E	FAF
<b>MV2WH</b>	260310.58S	1274408.70E	MAHF
<b>MV2WI</b>	260302.36S	1272950.76E	IF
<b>RW09</b>	260308.79S	1274048.84E	MAPt

3.2 YWMO RNP RWY 27 waypoints are as follows:

<b>MV2EA</b>	255833.14S	1275504.20E	IAF RIGHT
<b>MV2EB</b>	260317.48S	1275840.79E	IAF CENTRE
<b>MV2EC</b>	260758.69S	1275458.80E	IAF LEFT
<b>MV2EF</b>	260312.34S	1274734.57E	FAF
<b>MV2EH</b>	260307.64S	1273844.54E	MAHF
<b>MV2EI</b>	260315.02S	1275307.67E	IF
<b>RW27</b>	260309.48S	1274204.40E	MAPt

## 4. CANCELLATION

4.1 This SUP will be cancelled when the procedures are incorporated into AIP DAP. This is expected to be in DAP amendment 181, effective 28 November 2024.

## 5. DISTRIBUTION

5.1 Airservices Australia website only.

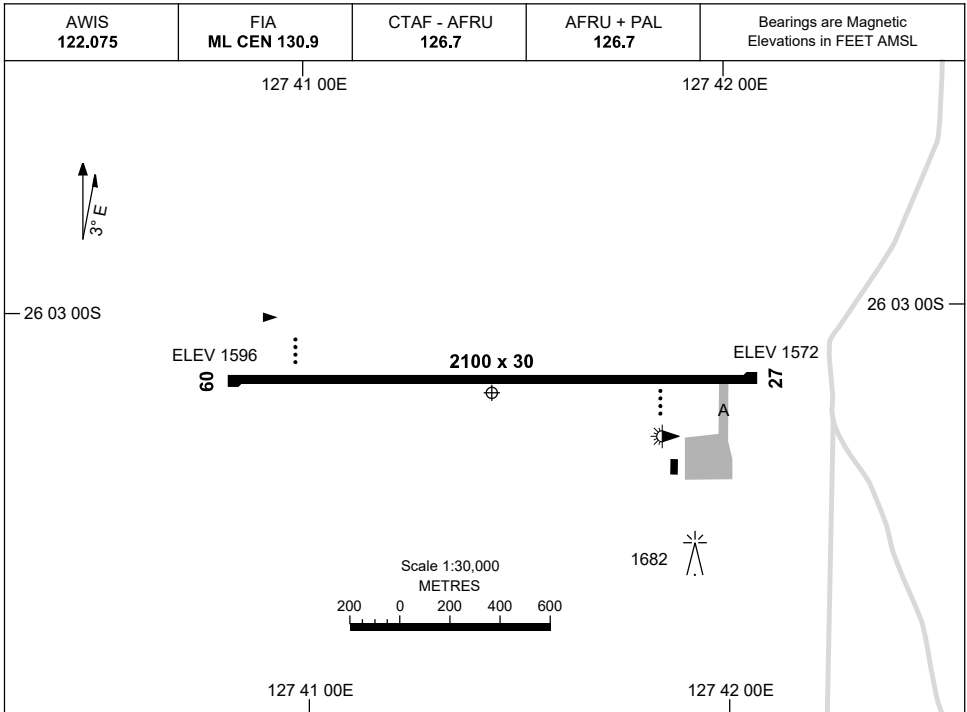
## Appendices

1. Aerodrome Chart
2. RNP RWY 09
3. RNP RWY 27

**APPENDIX 1  
TO SUP H74/24**

AD ELEV 1600  
26 03 11S 127 41 27E

**AERODROME CHART  
WEST MUSGRAVE, WA (YWMO)**



	<b>AERODROME LIGHTING</b>
<b>RWY</b>	TWY : BLUE EDGE RL : AFRU + PAL 126.7
<b>09</b> <small>093</small>	PAPI 3.0° 52FT LIRL
<small>273</small> <b>27</b>	PAPI 3.0° 52FT LIRL

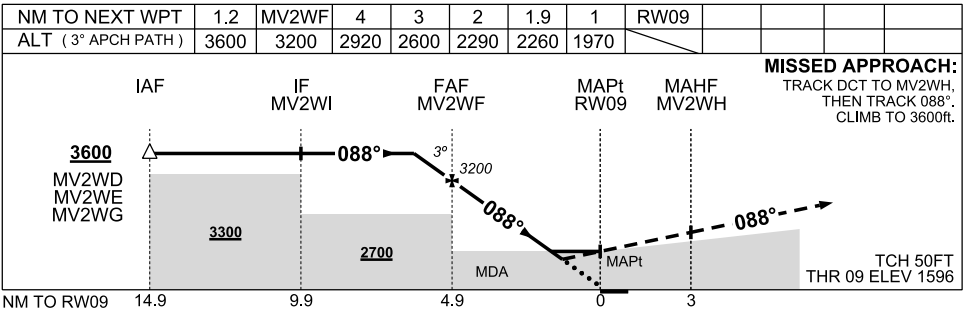
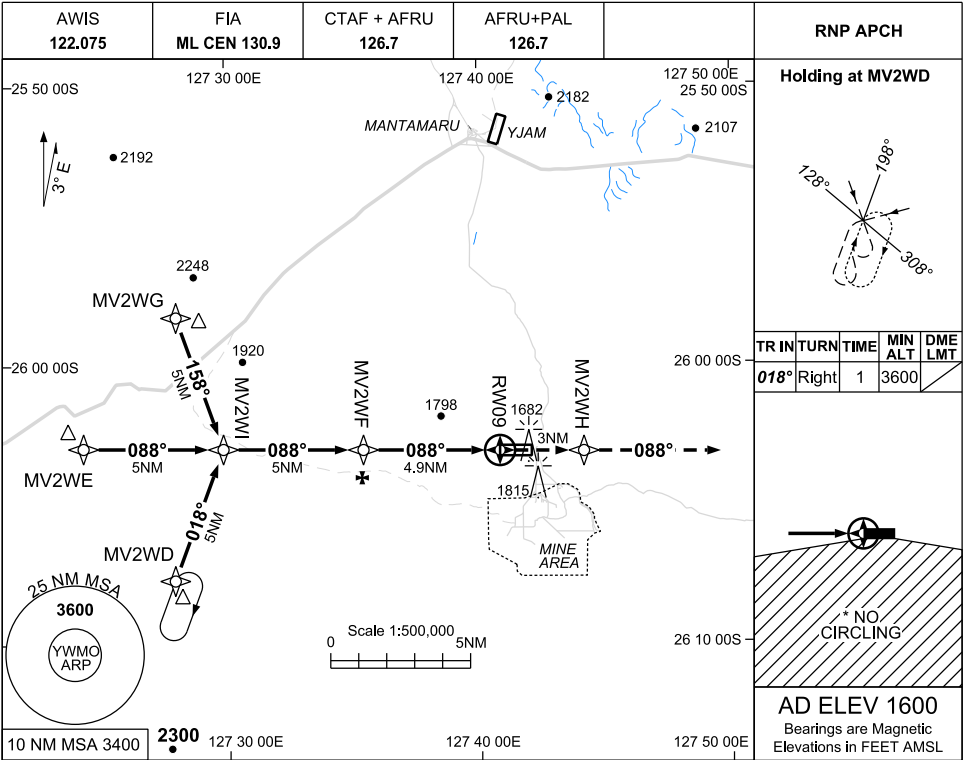
**NOTES**

1. FIA ML CEN AVBL ABV 4,000FT

**APPENDIX 2 TO  
SUP H74/24**

**USE QNH**

**RNP RWY 09  
WEST MUSGRAVE, WA (YWMO)**



**NOTES**

- 1. MAX IAS:  
INITIAL: 210KT.
- \*2. NO CIRCLING S  
OF RWY 09/27.

CATEGORY	A	B	C	D
LNAV	<b>2260 (664 - 3.8)</b>			<b>NOT APPLICABLE</b>
* CIRCLING	<b>2320 (720 - 2.4)</b>		<b>2420 (820-4.0)</b>	
ALTERNATE	<b>(1220 - 4.4)</b>		<b>(1320 - 6.0)</b>	

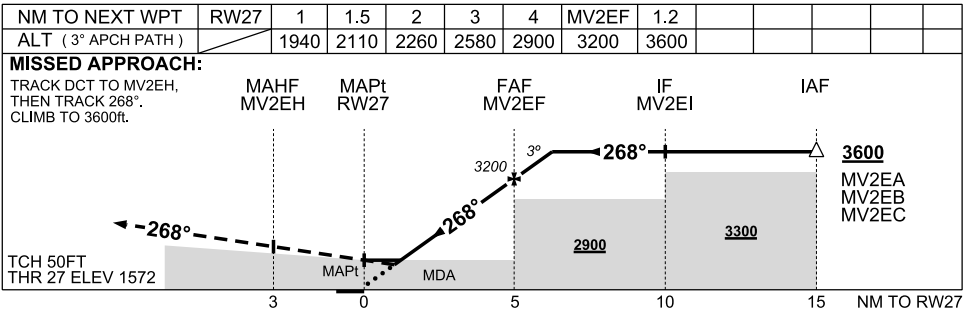
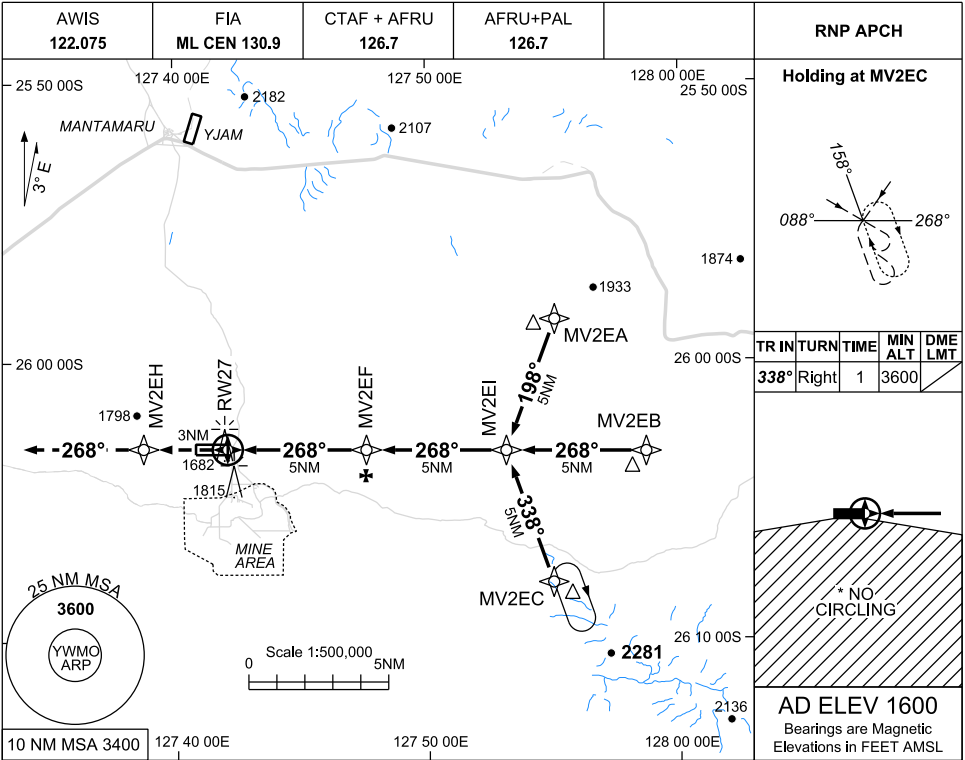
Changes: NEW PROCEDURE

WMOGN01-SUP

**APPENDIX 3 TO  
SUP H74/24**

**USE QNH**

**RNP RWY 27  
WEST MUSGRAVE, WA (YWMO)**



**NOTES**

1. MAX IAS INITIAL: 210KT.
2. NO CIRCLING S OF RWY 09/27.

CATEGORY	A	B	C	D
LNAV	<b>2110 (538 - 3.0)</b>			<b>NOT APPLICABLE</b>
* CIRCLING	<b>2320 (720 - 2.4)</b>		<b>2420 (820-4.0)</b>	
ALTERNATE	<b>(1220 - 4.4)</b>		<b>(1320 - 6.0)</b>	

Changes: NEW PROCEDURE

WMOGN02-SUP