

**AIP SUPPLEMENT  
(SUP)**

AERONAUTICAL INFORMATION SERVICE,  
AIRSERVICES AUSTRALIA, GPO BOX 367,  
CANBERRA ACT 2601

**AIRAC****H62/24****Effective: 202406121600 UTC**

For **DISTRIBUTION** queries, contact:  
Email: [aim\\_editorial@airservicesaustralia.com](mailto:aim_editorial@airservicesaustralia.com)

For **CONTENT** queries regarding this SUP, contact:  
Email: [ifp@airservicesaustralia.com](mailto:ifp@airservicesaustralia.com)

# LEARMONTH (YPLM) REVISED DEPARTURE AND APPROACH PROCEDURES (DAP)

## 1. INTRODUCTION

- 1.1 This SUP cancels and replaces SUP H54/24 due to a typographical error in paragraph 2.2.
- 1.2 This AIP SUP publishes amended procedures for Learmonth (YPLM) to provide separation from the amended R125.
- 1.3 The sector boundaries for the DME GNSS ARRIVAL PROCEDURES are amended and the central initial leg is removed from the RNP RWY 18 approach and holding at PLMNG is restricted to not above 200kt IAS.

## 2. IMPLEMENTATION

- 2.1 The procedures in this SUP replace procedures published in DAP.
- 2.2 Recommended coding sheet for RNP RWY 18 is available on request.

## 3. CANCELLATION

- 3.1 This SUP will be cancelled when it is incorporated into AIP DAP, expected to be in DAP Amendment 180, effective 05 September 2024.

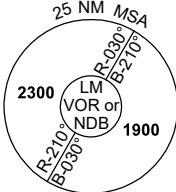
## 4. DISTRIBUTION

- 4.1 Airservices Australia website only.

**APPENDIX 1  
TO SUP H62/24**

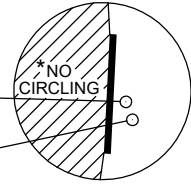
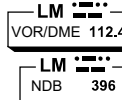
**DME or GNSS ARRIVAL PROCEDURES  
LEARMONTH, WA (YPLM)**

FIA ML CEN 125.9	APP 120.5 261.4	TWR 118.3 257.8	SMC 259.3	CTAF+AFRU 118.3	AFRU+PAL 118.3	Bearings are Magnetic Elevations in FEET AMSL
---------------------	--------------------	--------------------	--------------	--------------------	-------------------	--



**DME USING LM DME  
REFERENCE WAYPOINT LM VOR**

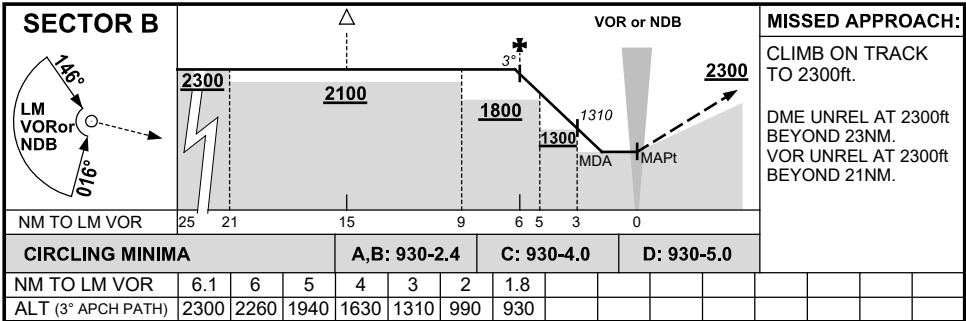
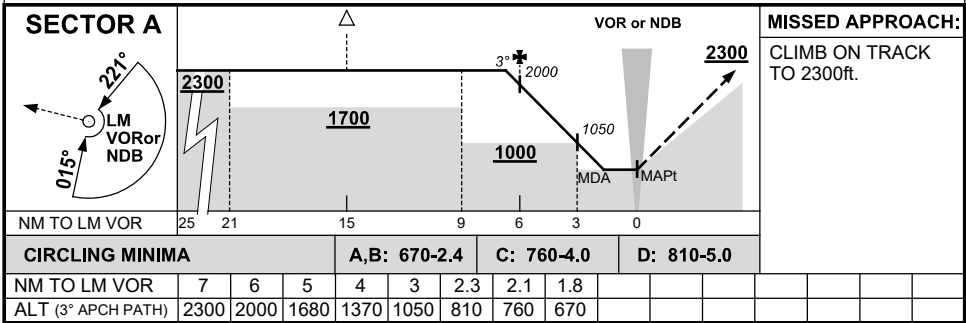
AWIS (PHONE) 08 6216 2623



\* NO CIRCLING WEST OF RWY 18/36.

AD ELEV 19

10 NM MSA 2300



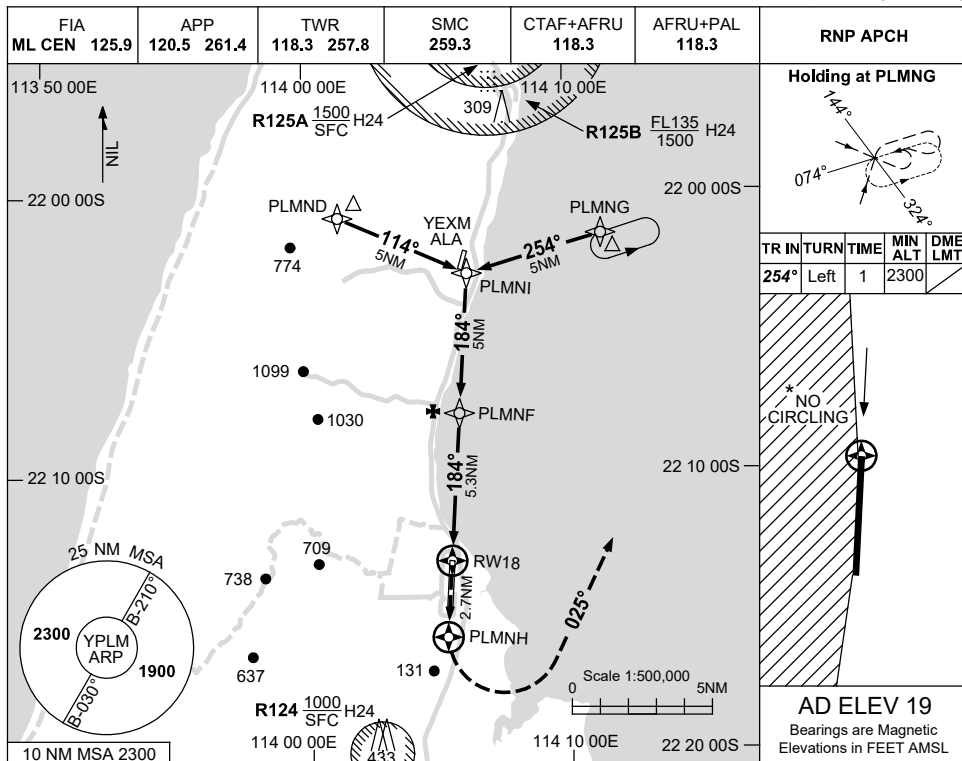
Changes: SECTOR BOUNDARIES, SECTOR B SEGMENT MIN ALT.



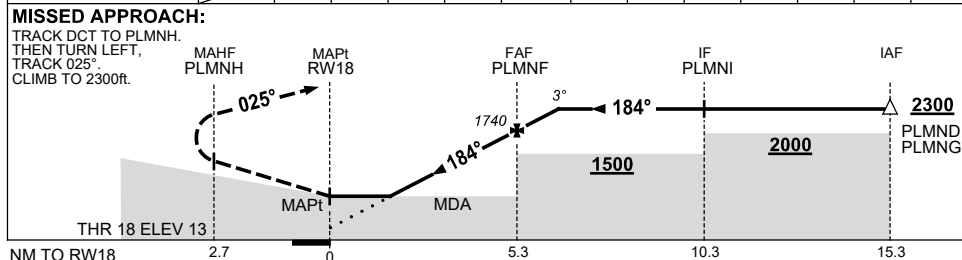
**APPENDIX 2  
TO SUP H62/24**

**USE QNH**

**RNP RWY 18  
LEARMONTH, WA (YPLM)**



NM TO NEXT WPT	RW18	1.5	2	3	4	PLMNF	1	1.8				
ALT (3° APCH PATH)		550	700	1020	1340	1740	2060	2300				



- NOTES**
1. MAX IAS:  
INITIAL : 210KT.  
HOLDING : 200KT.
  2. NO CIRCLING WEST OF RWY 18/36.
  3. AWIS (PHONE)  
08 6216 2623
  4. R125 A/B LOCATED 005°MAG/20.7NM REF YPLM ARP

CATEGORY	A	B	C	D
LNAV	<b>550 (531-2.1)</b>			
CIRCLING*	<b>660 (641-2.4)</b>	<b>760 (741-4.0)</b>	<b>810 (791-5.0)</b>	
ALTERNATE	(1141-4.4)	(1241-6.0)	(1291-7.0)	

Changes: PLMNE INITIAL REMOVED, NOTES.

PLMNG01-SUP

