

**AIP SUPPLEMENT
(SUP)****AIRAC****H61/24****Effective: 202407101600 UTC**AERONAUTICAL INFORMATION SERVICE,
AIRSERVICES AUSTRALIA, GPO BOX 367,
CANBERRA ACT 2601For **DISTRIBUTION** queries, contact:
Email: aim_editorial@airservicesaustralia.comFor **CONTENT** queries regarding this SUP, contact:Email: ifp@airservicesaustralia.com**PORT LINCOLN (YPLC)
NEW RNP PROCEDURE****1. INTRODUCTION**

- 1.1 This AIP SUP introduces a new RNP RWY 01 approach procedure for Port Lincoln (YPLC).

2. IMPLEMENTATION

- 2.1 The procedure in the appendix becomes effective 202407101600 UTC.
- 2.2 Recommended coding sheet for RNP RWY 01 is available on request.

3. WAYPOINTS

- 3.1 YPLC RNP RWY 01 waypoints are as follows:

LC2SG	344638.67S	1354304.19E
LC2SE	345109.18S	1354723.39E
LC2SD	344920.57S	1355400.09E
LC2SI	344621.28S	1354907.75E
LC2SF	344133.35S	1355051.92E
LC2SH	343352.60S	1355338.17E

4. CANCELLATION

- 4.1 This SUP will be cancelled when the procedures are incorporated into AIP DAP. This is expected to be in DAP amendment 181, effective 28 November 2024.

5. DISTRIBUTION

5.1 Airservices Australia website only.

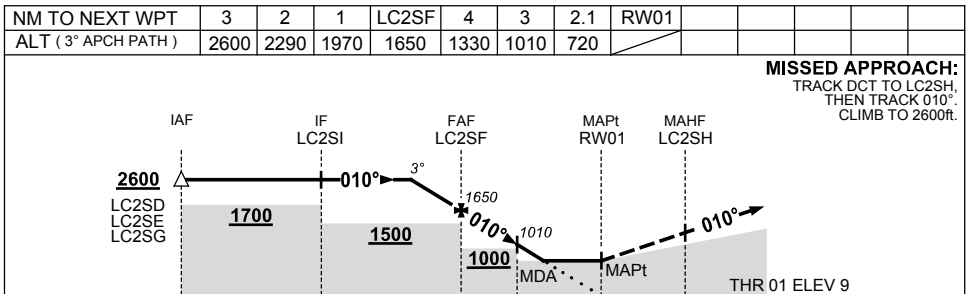
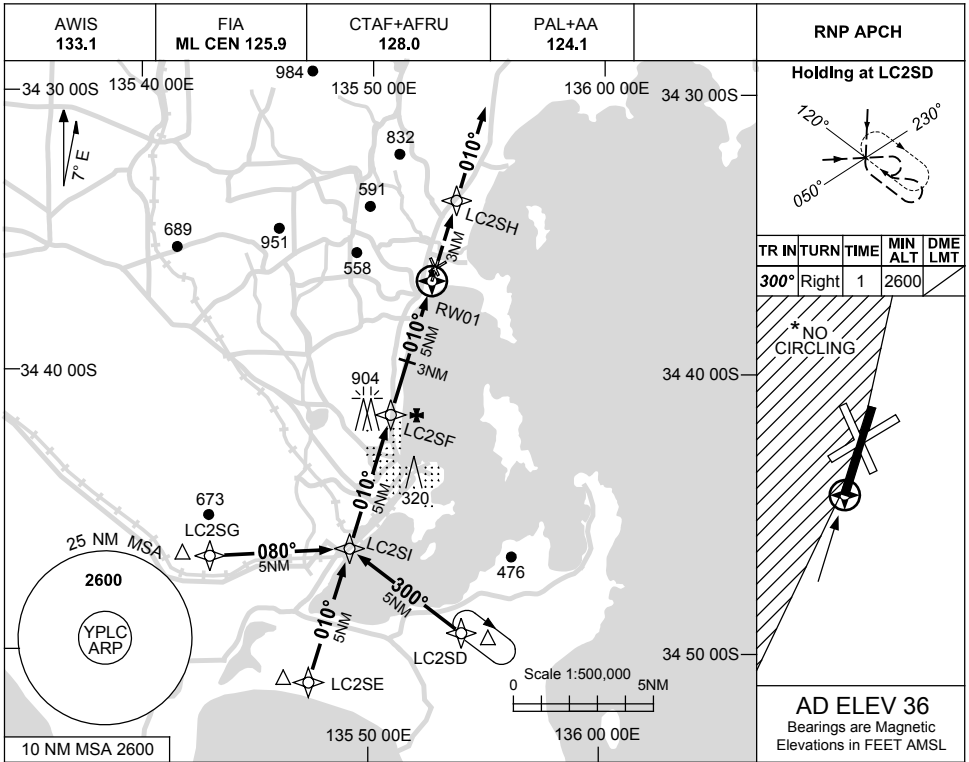
Appendices

1. RNP RWY 01

**APPENDIX 1
TO SUP H61/24**

USE QNH

**RNP RWY 01
PORT LINCOLN, SA (YPLC)**



CATEGORY	A	B	C	D
LNAV	720 (711-4.1)			NOT APPLICABLE
CIRCLING *	1040 (1004-2.4)	1210 (1174-4.0)		
ALTERNATE	(1504-4.4)		(1674-6.0)	

NOTES

- MAX IAS:
INITIAL : 230KT.
- NO CIRCLING WEST OF RWY 01 / 19.

Changes: NEW PROC.

PLCGN02-SUP

