

**AIP SUPPLEMENT
(SUP)****H171/24****Effective: 202412021100 UTC**

AERONAUTICAL INFORMATION SERVICE,
AIRSERVICES AUSTRALIA, GPO BOX 367,
CANBERRA ACT 2601

For **DISTRIBUTION** queries, contact:
Email: aim_editorial@airservicesaustralia.com

For **CONTENT** queries regarding this SUP, contact:
Email: ddodge@hobartairport.com.au

HOBART AIRPORT (YMHB) RPT BAY 7 AND 8 REALIGNMENT

1. INTRODUCTION

- 1.1 This AIP SUP cancels and replaces SUP H163/24 with changes to dates in para 2.2, Section 4 and Section 5.
- 1.2 As part of the Hobart Airport (YMHB) Airfield Upgrade Project and Project Mercury, Bay 7 and 8 will be realigned to cater for Terminal construction.

2. WORKS DETAILS

- 2.1 This SUP is to provide forward notification and confirmation to aircraft and ground operators of the upcoming permanent changes to Bay 7 and 8 operations. Works will be staged to minimise the disruption to operators.
- 2.2 The transition of the current line marking for Bay 7 and 8 will be conducted over four nights (subject to weather) with an additional day allowance to complete any touch ups required. Works are planned for 02 December to 10 December. Transition plans are provided in the appendices of this SUP.

3. REFERENCES

- 3.1 Method of Working Plan - MOWP 2414

4. WORKS PROGRAM

- 4.1 The transition of the line marking for Bays 7 and 8 may cause disruption to the RPT apron between 02 December to 10 December. Works timings will be overnight outside of RPT operating hours, generally 2200 to 0600 Local. Refer to YMHB MOWP 2414 for timings.

- 4.2 During Stage 1 of the overnight works between 02 December to 03 December, new apron road alignment from Bay 7 to Bay 8 and new Parking Clearance line will be installed. Existing road and parking clearance lines between Bays 7 & 8 will be blacked out. See attached appendix 1.
- 4.3 During Stage 2 of the overnight works between 03 December to 04 December, new Bay 7 guidelines, equipment clearance, storage and parking position markings will be installed. Bay 7 Passenger Path marking remains in the existing layout at the end of this Stage. Existing Bay 7 guide lines, equipment clearance, equipment storage and parking position markings will be blacked out. See attached appendix 2. Bay 7 will be available in the new position from 202412031900 UTC.
- 4.4 During Stage 3 of the overnight works between 04 December to 03 December, new Bay 8 guidelines, equipment clearance, storage, parking position markings and Bay 7 and 8 Passenger Paths will be installed. Existing Bay 8 guide lines, equipment clearance, equipment storage, parking position markings and Bay 7 and 8 Passenger Paths will be backed out. See attached appendix 3. Bay 8 will be available in the new position from 202412041900 UTC.
- 4.5 During Stage 4 of the overnight works between 05 December to 06 December, new GSE “loop” road, equipment storage lines and “max span” markings will be installed. Existing GSE line marking will be backed out.
- 4.6 During Stage 5 of the overnight works between 06 December to 10 December, blackout lines from previous stages will be removed.

5. OPERATIONAL INFORMATION

- 5.1 During the installation works periods 02 December to 06 December, Taxiway H between Taxiway G and Taxiway J and TWY G will be closed.
- 5.2 From 02 December, Taxiway G, Taxiway H between Taxiway F and Taxiway J will be restricted to max 36M wingspan.
- 5.3 Final parking position coordinates:

BAY	CO-ORDINATES		ELEV (ft)	CAPACITY	HYDRANT FUEL	DOCKING SYSTEM
7	425014.98S	1473024.91E	11	A321	Tanker	Marshaller
8	425016.27S	1473025.94E	11	A321	Tanker	Marshaller

6. CONTACT INFORMATION

- 6.1 For additional information or clarification of information contained within this SUP, please contact:

Darren Dodge

Operations Manager

Hobart Airport

PH: +61 3 6216 1600

Email: ddodge@hobartairport.com.au

7. CANCELLATION

- 7.1 This SUP will remain current until updated or all works are complete and changes are incorporated into DAP, expected 20 MAR 2025.

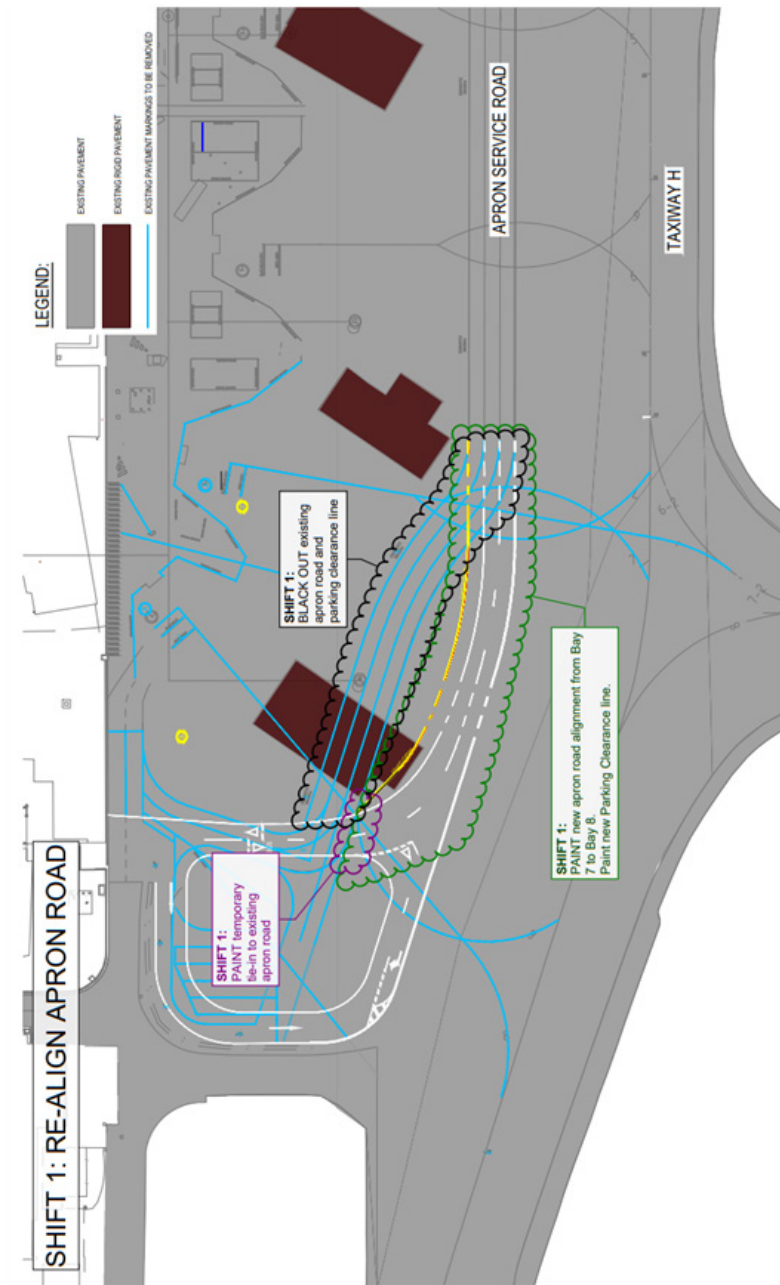
8. DISTRIBUTION

- 8.1 Airservices Australia website only.

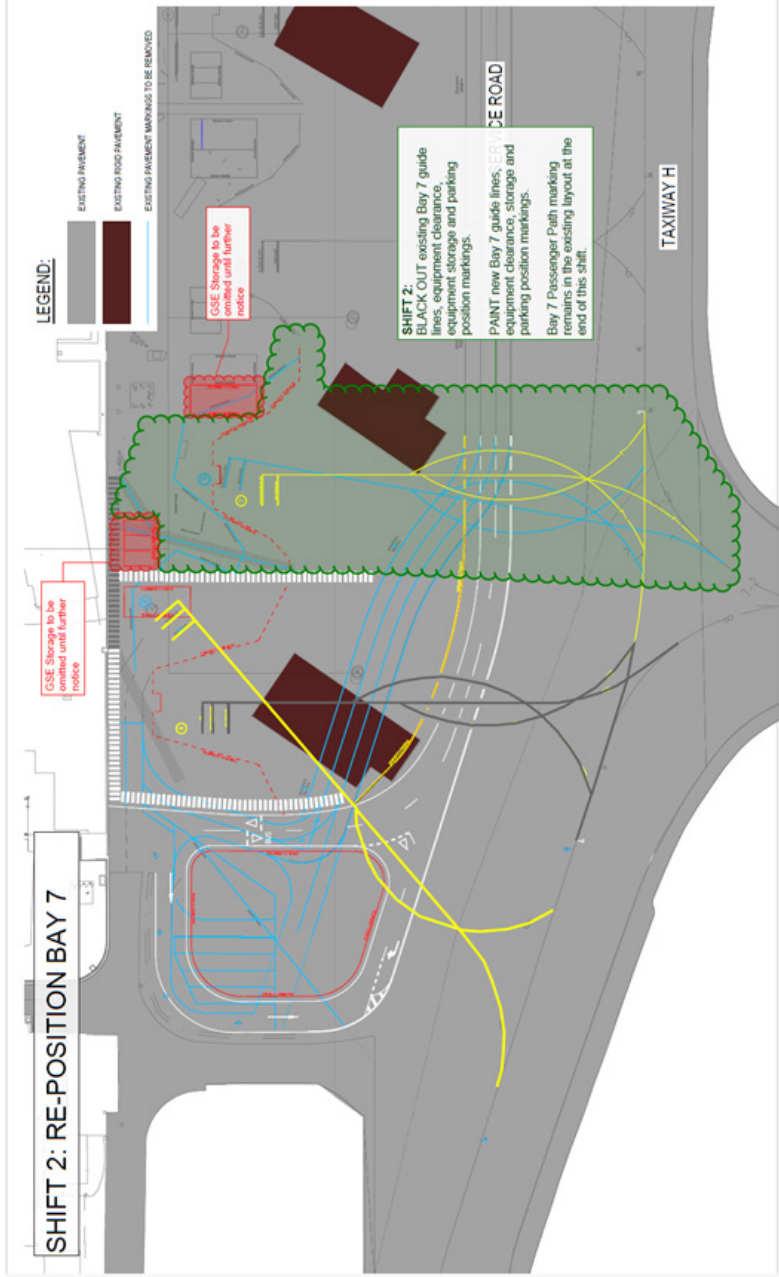
Appendices

1. Stage 1
2. Stage 2
3. Stage 3
4. Stage 4
5. Final Layout

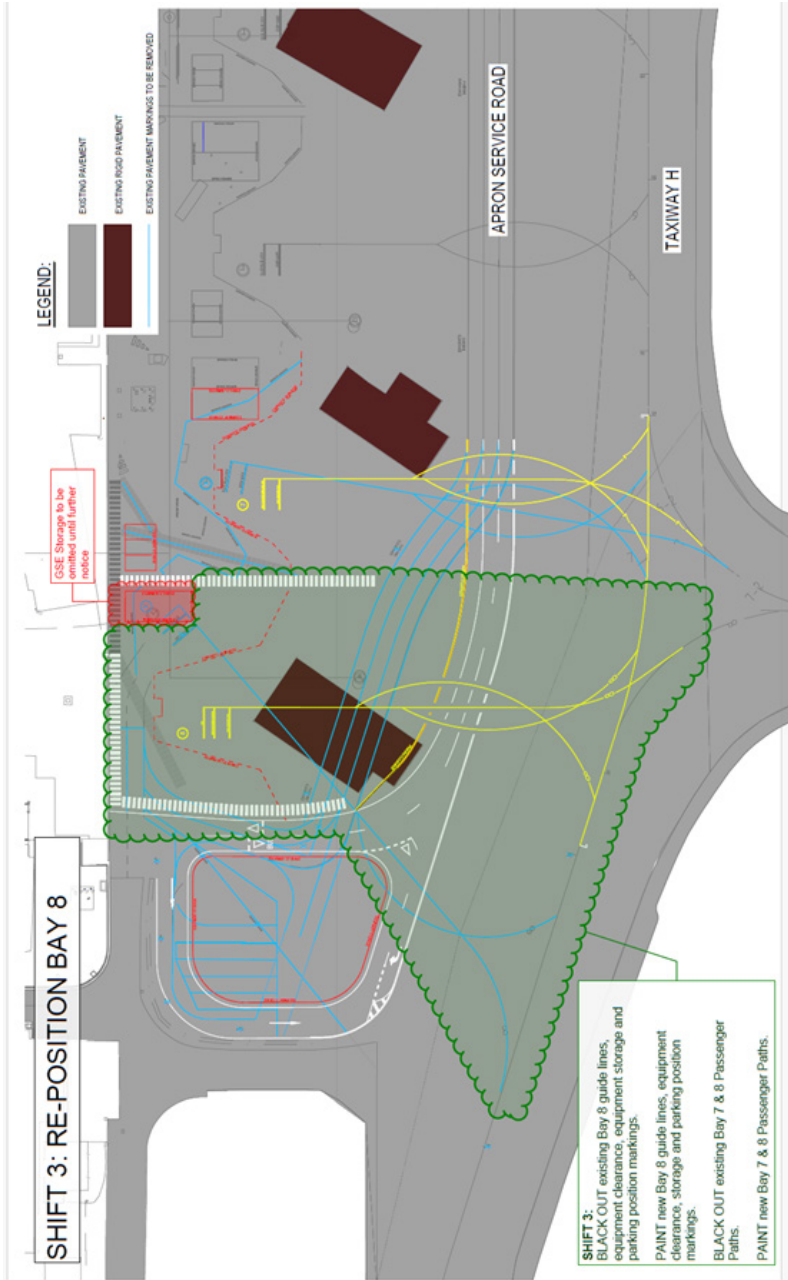
1. Stage 1



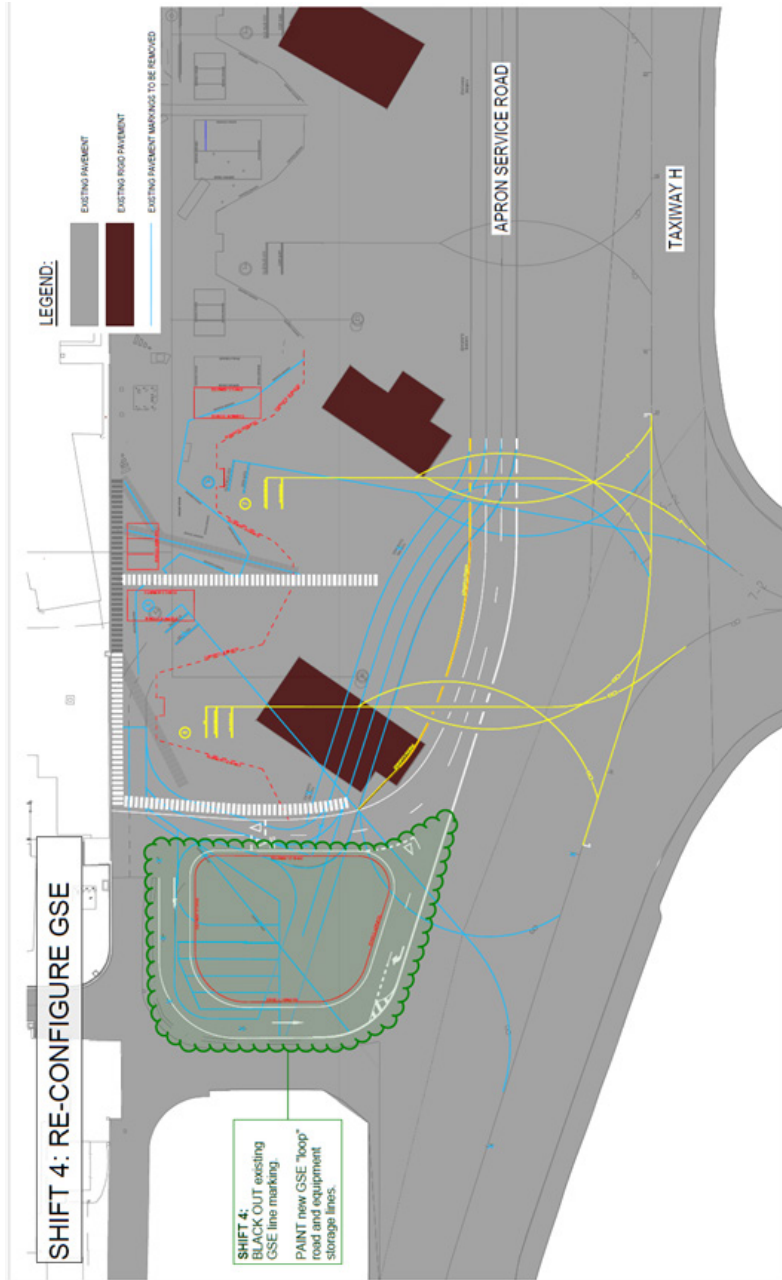
2. Stage 2



3. Stage 3



4. Stage 4



5. Final Layout

