

**AIP SUPPLEMENT  
(SUP)****H160/24****Effective: 202410210500 UTC**

AERONAUTICAL INFORMATION SERVICE,  
AIRSERVICES AUSTRALIA, GPO BOX 367,  
CANBERRA ACT 2601

For **DISTRIBUTION** queries, contact:  
Email: [aim\\_editorial@airservicesaustralia.com](mailto:aim_editorial@airservicesaustralia.com)

For **CONTENT** queries regarding this SUP, contact:  
Email: [ddodge@hobartairport.com.au](mailto:ddodge@hobartairport.com.au)

**HOBART (YMHB) AERODROME  
TAXIWAY JULIET EXTENSION****1. INTRODUCTION**

- 1.1 This SUP cancels and replaces SUP H153/24 with changes to para 2.2 and 2.3.
- 1.2 This AIP SUP details Stages 1A and 1B of TWY works at Hobart (YMHB) Aerodrome.
- 1.3 Various RWY and TWY works will be undertaken at YMHB in 2024 and 2025 to improve the capacity and operational efficiency of Hobart Aerodrome. At times these works will affect the RWY length and RWY and/or TWY availability, which may result in delays for aircraft operations at YMHB.
- 1.4 During Stages 1A and 1B the existing TWY J will be extended between TWY H and TWY A.
- 1.5 Further AIP SUP publications will detail subsequent stages as required.

**2. WORKS PROGRAM**

- 2.1 Works will be carried out in accordance with YMHB MOWP 2407, Stages 1A and 1B.
- 2.2 Stage 1A**
  - 2.2.1 Stage 1A comprises the primary construction activities of the TWY J extension between the 9 July and end of November 2024 or advised by NOTAM (see Appendix 2).
  - 2.2.2 During stage 1A, TWY A between TWY D and TWY G will be closed H24.

### 2.3 Stage 1B

- 2.3.1 Stage 1B works will join the newly constructed TWY J to the existing TWY H between the 18 September and end of November 2024 or advised by NOTAM (see Appendix 3).
- 2.3.2 Stage 1B works will be conducted nightly, Sunday - Thursday between 1030-1930 UTC (2030-0530 Local).
- 2.3.3 TWY D and TWY H between TWY D and TWY J are not AVBL.
- 2.3.4 TWY H from TDP 8S to the intersection of TWY J is limited to Code B aircraft with a maximum wingspan of 18M.
- 2.3.5 While Stage 1A is active, TWY A between TWY D and TWY G will also be closed H24.

## 3. CONTACT

- 3.1 For additional information or clarification of information contained within this SUP, please contact:

Darren Dodge

Head of Operations

Hobart Airport

PH: +61 3 6216 1600

Email: [ddodge@hobartairport.com.au](mailto:ddodge@hobartairport.com.au)

## 4. CANCELLATION

- 4.1 This SUP will be cancelled when TWY J construction is complete.

## 5. DISTRIBUTION

- 5.1 Aircservices Australia website only.

## Appendices

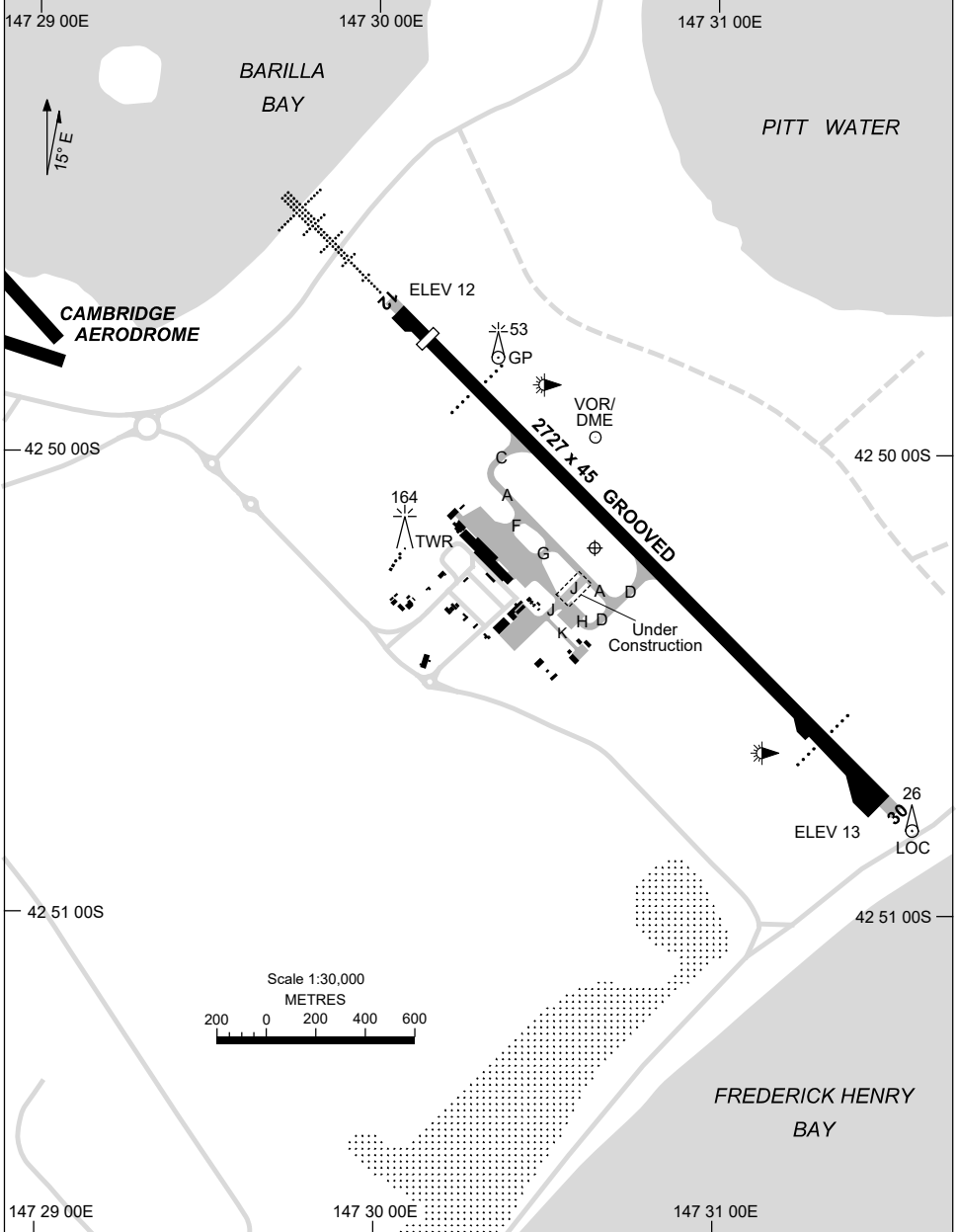
- 1. Aerodrome chart
- 2. Works 1A Plan
- 3. Works 1B Plan - TWY J Tie-down

**APPENDIX 1  
TO AIP SUP H160/24**

AD ELEV 13  
42 50 10S 147 30 37E

AERODROME CHART - Page 1  
**HOBART, TAS (YMHB)**

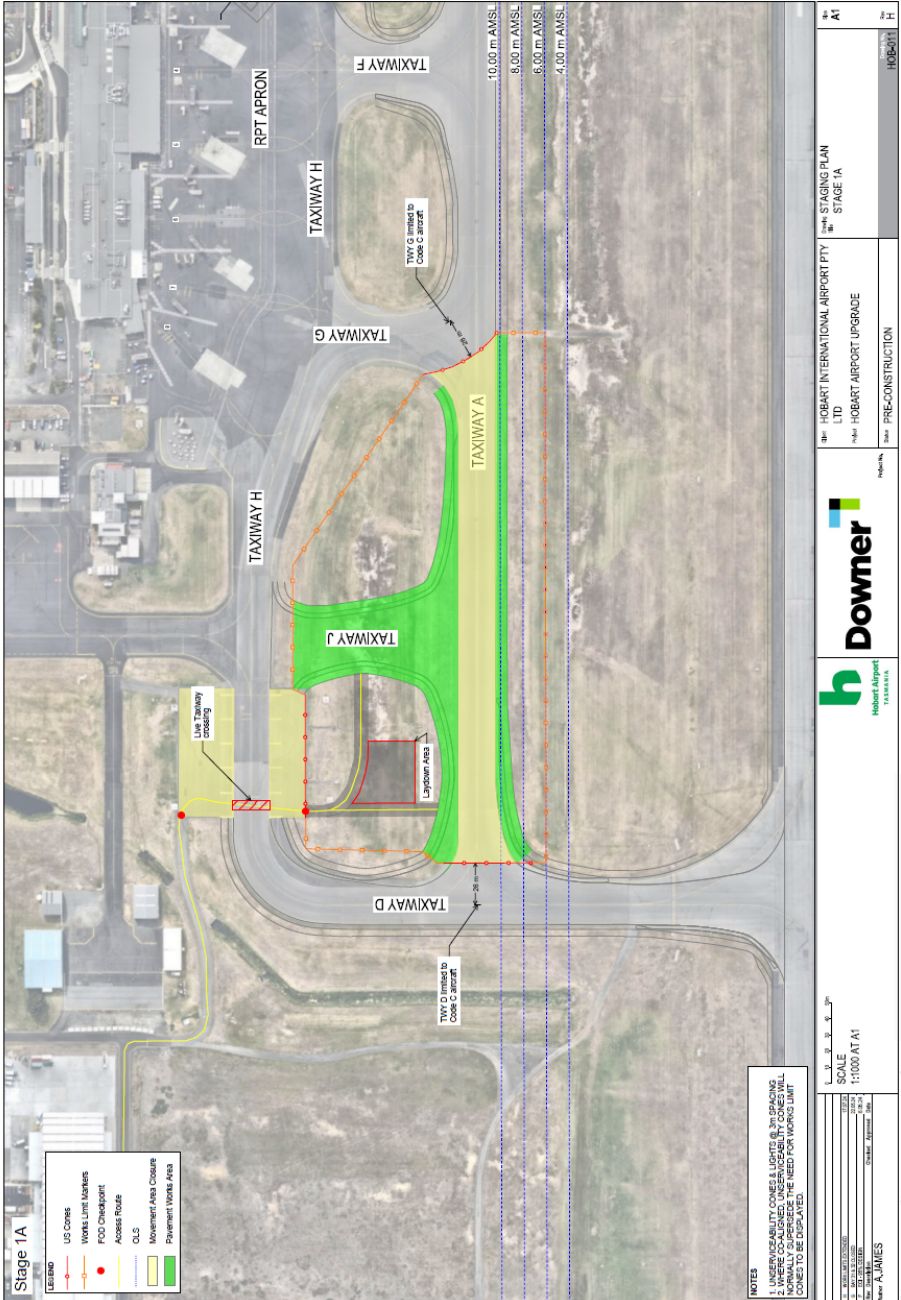
ATIS 112.7 128.45	AWIS 122.375	SMC/ACD 121.7	TWR 118.1	HB APP/FIA (AH) ML CEN 125.55	CTAF+AFRU (AH) 118.1	AFRU+PAL (AH) 118.1	Bearings are Magnetic Elevations in FEET AMSL
----------------------	-----------------	------------------	--------------	----------------------------------	-------------------------	------------------------	--



Changes: TWY J extension.

MHBAD01-SUP

2. Works 1A Plan



3. Works 1B Plan - TWY J Tie-down

