

**AIP SUPPLEMENT  
(SUP)****H118/24****Effective: 202408200500 UTC**AERONAUTICAL INFORMATION SERVICE,  
AIRSERVICES AUSTRALIA, GPO BOX 367,  
CANBERRA ACT 2601For **DISTRIBUTION** queries, contact:  
Email: [aim\\_editorial@airservicesaustralia.com](mailto:aim_editorial@airservicesaustralia.com)For **CONTENT** queries regarding this SUP, contact:  
Email: [ddodge@hobartairport.com.au](mailto:ddodge@hobartairport.com.au)**HOBART (YMHB) AERODROME  
TAXIWAY JULIET EXTENSION****1. INTRODUCTION**

- 1.1 This SUP cancels and replaces SUP H86/24 with new para 1.3 and changes to the dates in para 2.2.1 and 2.3.1.
- 1.2 This AIP SUP details Stages 1A and 1B of TWY works at Hobart (YMHB) Aerodrome.
- 1.3 Stage 1B has been paused with immediate effect and will recommence on 18 September 2024.
- 1.4 Various RWY and TWY works will be undertaken at YMHB in 2024 and 2025 to improve the capacity and operational efficiency for Hobart Aerodrome. At times these works will affect the RWY length and RWY and/or TWY availability, which may result in delays for aircraft operations at YMHB.
- 1.5 During Stages 1A and 1B the existing TWY JULIET will be extended between TWY HOTEL and TWY ALPHA.
- 1.6 Further AIP SUP publications will detail subsequent stages as required.

**2. WORKS PROGRAM**

- 2.1 Works will be carried out in accordance with YMHB MOWP 2407, Stages 1A and 1B.
- 2.2 Stage 1A**
  - 2.2.1 Stage 1A comprises of the primary construction activities of the TWY JULIET extension between the 9 July until 28 September (see Appendix 2).
  - 2.2.2 During stage 1A, TWY ALPHA between TWY DELTA and TWY GOLF will be closed H24.

### 2.3 Stage 1B

- 2.3.1 Stage 1B works will join the newly constructed TWY JULIET to the existing TWY HOTEL between the 18 September until the 16 October (see Appendix 3).
- 2.3.2 Stage 1B works will be conducted nightly between 1030-1830 UTC (2030-0430 Local).
- 2.3.3 TWY DELTA and TWY HOTEL between TWY DELTA and TWY JULIET are not AVBL.
- 2.3.4 TWY HOTEL from TDP 8S to the intersection of TWY JULIET is limited to Code B aircraft with a maximum wingspan of 18M.
- 2.3.5 As per stage 1A, during stage 1B TWY ALPHA between TWY DELTA and TWY GOLF will also be closed H24.

### 3. CONTACT

- 3.1 For additional information or clarification of information contained within this SUP, please contact:

Darren Dodge

Head of Operations

Hobart Airport

PH: +61 3 6216 1600

Email: [ddodge@hobartairport.com.au](mailto:ddodge@hobartairport.com.au)

### 4. CANCELLATION

- 4.1 This SUP will be cancelled when TWY JULIET construction is complete.

### 5. DISTRIBUTION

- 5.1 Airservices Australia website only.

### Appendices

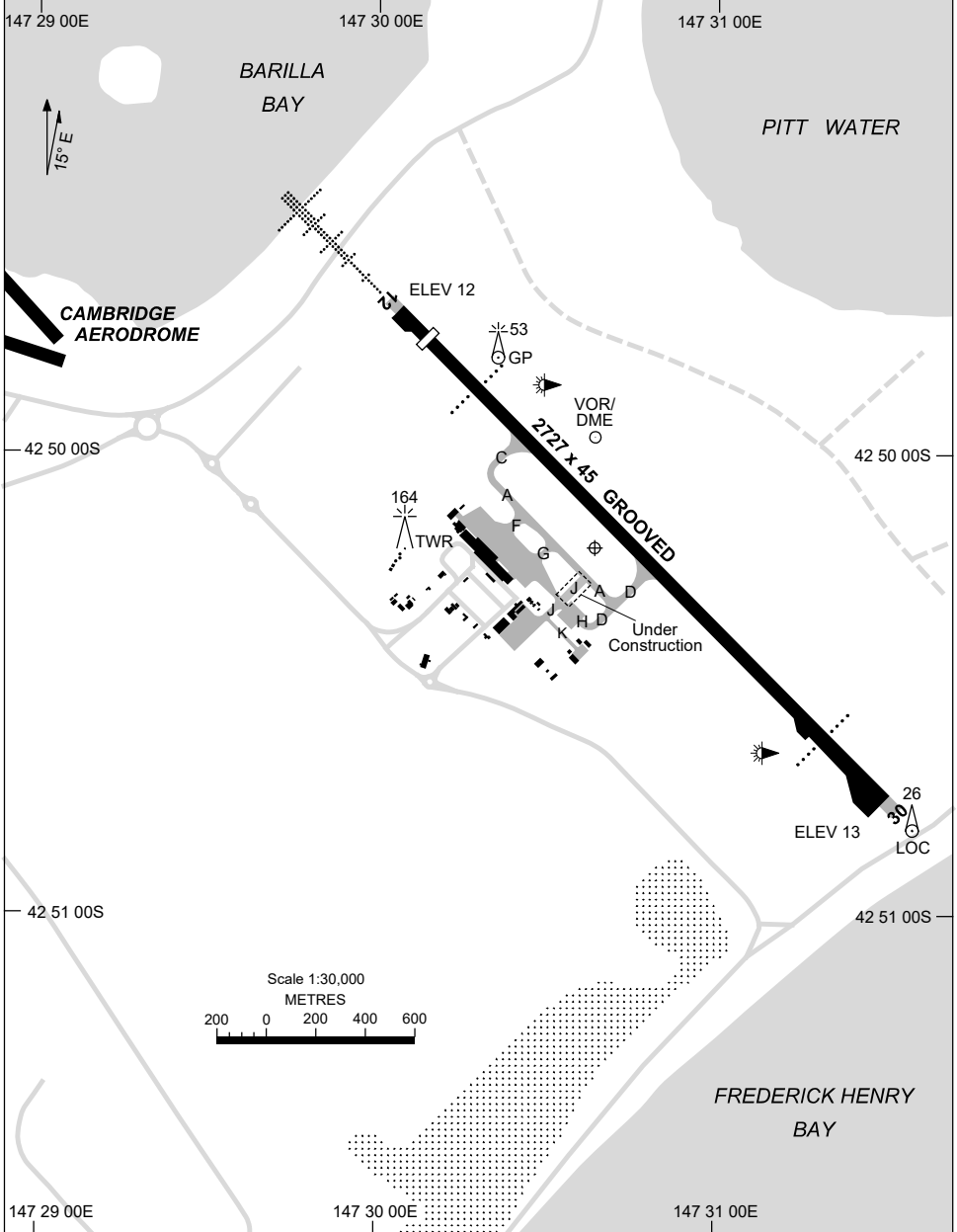
- 1. Aerodrome chart
- 2. Works 1A plan
- 3. Works 1B plan - TWY JULIET tie-down

**APPENDIX 1  
TO AIP SUP H118/24**

AD ELEV 13  
42 50 10S 147 30 37E

AERODROME CHART - Page 1  
**HOBART, TAS (YMHB)**

ATIS 112.7 128.45	AWIS 122.375	SMC/ACD 121.7	TWR 118.1	HB APP/FIA (AH) ML CEN 125.55	CTAF+AFRU (AH) 118.1	AFRU+PAL (AH) 118.1	Bearings are Magnetic Elevations in FEET AMSL
----------------------	-----------------	------------------	--------------	----------------------------------	-------------------------	------------------------	--

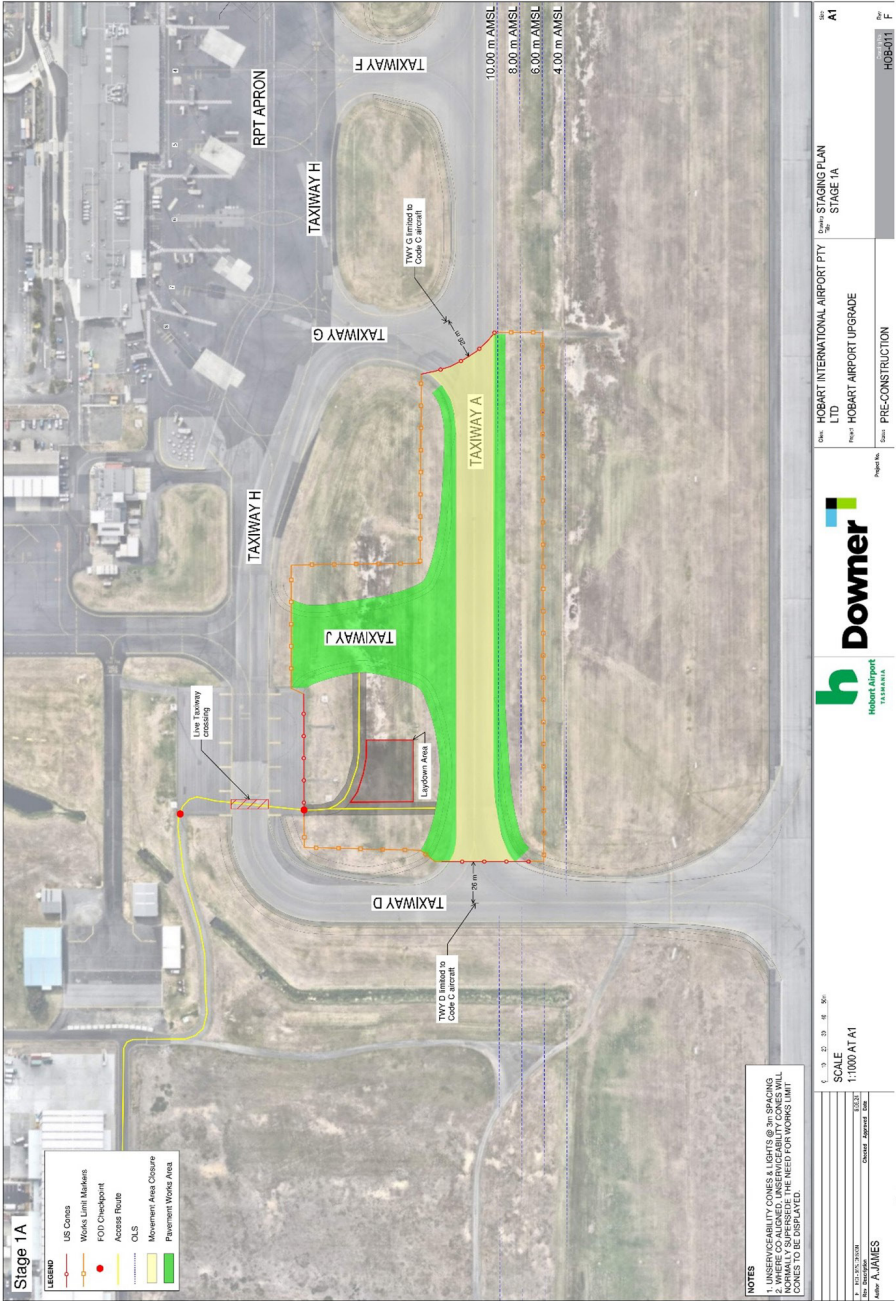


Changes: TWY J extension.

MHBAD01-SUP



2. Works 1A plan



**NOTES**  
 1. UNREVERSIBILITY CONES A, B, C, D, E, F, G, H, I, J, K, L, M, N, O, P, Q, R, S, T, U, V, W, X, Y, Z, AA, AB, AC, AD, AE, AF, AG, AH, AI, AJ, AK, AL, AM, AN, AO, AP, AQ, AR, AS, AT, AU, AV, AW, AX, AY, AZ, BA, BB, BC, BD, BE, BF, BG, BH, BI, BJ, BK, BL, BM, BN, BO, BP, BQ, BR, BS, BT, BU, BV, BW, BX, BY, BZ, CA, CB, CC, CD, CE, CF, CG, CH, CI, CJ, CK, CL, CM, CN, CO, CP, CQ, CR, CS, CT, CU, CV, CW, CX, CY, CZ, DA, DB, DC, DD, DE, DF, DG, DH, DI, DJ, DK, DL, DM, DN, DO, DP, DQ, DR, DS, DT, DU, DV, DW, DX, DY, DZ, EA, EB, EC, ED, EE, EF, EG, EH, EI, EJ, EK, EL, EM, EN, EO, EP, EQ, ER, ES, ET, EU, EV, EW, EX, EY, EZ, FA, FB, FC, FD, FE, FF, FG, FH, FI, FJ, FK, FL, FM, FN, FO, FP, FQ, FR, FS, FT, FU, FV, FW, FX, FY, FZ, GA, GB, GC, GD, GE, GF, GG, GH, GI, GJ, GK, GL, GM, GN, GO, GP, GQ, GR, GS, GT, GU, GV, GW, GX, GY, GZ, HA, HB, HC, HD, HE, HF, HG, HH, HI, HJ, HK, HL, HM, HN, HO, HP, HQ, HR, HS, HT, HU, HV, HW, HX, HY, HZ, IA, IB, IC, ID, IE, IF, IG, IH, II, IJ, IK, IL, IM, IN, IO, IP, IQ, IR, IS, IT, IU, IV, IW, IX, IY, IZ, JA, JB, JC, JD, JE, JF, JG, JH, JI, JJ, JK, JL, JM, JN, JO, JP, JQ, JR, JS, JT, JU, JV, JW, JX, JY, JZ, KA, KB, KC, KD, KE, KF, KG, KH, KI, KJ, KK, KL, KM, KN, KO, KP, KQ, KR, KS, KT, KU, KV, KW, KX, KY, KZ, LA, LB, LC, LD, LE, LF, LG, LH, LI, LJ, LK, LL, LM, LN, LO, LP, LQ, LR, LS, LT, LU, LV, LW, LX, LY, LZ, MA, MB, MC, MD, ME, MF, MG, MH, MI, MJ, MK, ML, MM, MN, MO, MP, MQ, MR, MS, MT, MU, MV, MW, MX, MY, MZ, NA, NB, NC, ND, NE, NF, NG, NH, NI, NJ, NK, NL, NM, NN, NO, NP, NQ, NR, NS, NT, NU, NV, NW, NX, NY, NZ, OA, OB, OC, OD, OE, OF, OG, OH, OI, OJ, OK, OL, OM, ON, OO, OP, OQ, OR, OS, OT, OU, OV, OW, OX, OY, OZ, PA, PB, PC, PD, PE, PF, PG, PH, PI, PJ, PK, PL, PM, PN, PO, PP, PQ, PR, PS, PT, PU, PV, PW, PX, PY, PZ, QA, QB, QC, QD, QE, QF, QG, QH, QI, QJ, QK, QL, QM, QN, QO, QP, QQ, QR, QS, QT, QU, QV, QW, QX, QY, QZ, RA, RB, RC, RD, RE, RF, RG, RH, RI, RJ, RK, RL, RM, RN, RO, RP, RQ, RR, RS, RT, RU, RV, RW, RX, RY, RZ, SA, SB, SC, SD, SE, SF, SG, SH, SI, SJ, SK, SL, SM, SN, SO, SP, SQ, SR, SS, ST, SU, SV, SW, SX, SY, SZ, TA, TB, TC, TD, TE, TF, TG, TH, TI, TJ, TK, TL, TM, TN, TO, TP, TQ, TR, TS, TT, TU, TV, TW, TX, TY, TZ, UA, UB, UC, UD, UE, UF, UG, UH, UI, UJ, UK, UL, UM, UN, UO, UP, UQ, UR, US, UT, UY, UV, UW, UX, UY, UZ, VA, VB, VC, VD, VE, VF, VG, VH, VI, VJ, VK, VL, VM, VN, VO, VP, VQ, VR, VS, VT, VU, VV, VW, VX, VY, VZ, WA, WB, WC, WD, WE, WF, WG, WH, WI, WJ, WK, WL, WM, WN, WO, WP, WQ, WR, WS, WT, WU, WV, WW, WX, WY, WZ, XA, XB, XC, XD, XE, XF, XG, XH, XI, XJ, XK, XL, XM, XN, XO, XP, XQ, XR, XS, XT, XU, XV, XW, XX, XY, XZ, YA, YB, YC, YD, YE, YF, YG, YH, YI, YJ, YK, YL, YM, YN, YO, YP, YQ, YR, YS, YT, YU, YV, YW, YX, YY, YZ, ZA, ZB, ZC, ZD, ZE, ZF, ZG, ZH, ZI, ZJ, ZK, ZL, ZM, ZN, ZO, ZP, ZQ, ZR, ZS, ZT, ZU, ZV, ZW, ZX, ZY, ZZ.

SCALE  
 1:1000 AT A1  
 DATE: 10/20/2024  
 DRAWN: JAMES  
 CHECKED: JAMES  
 PROJECT: HOBART AIRPORT UPGRADE  
 SHEET: HOB-011



HOBART INTERNATIONAL AIRPORT LTD  
 HOBBART AIRPORT UPGRADE  
 PRE-CONSTRUCTION  
 HOB-011

**3. Works 1B plan - TWY JULIET tie-down**

