

**AIP SUPPLEMENT
(SUP)****AIRAC****H117/24****Effective: 202410021600 UTC**

AERONAUTICAL INFORMATION SERVICE,
AIRSERVICES AUSTRALIA, GPO BOX 367,
CANBERRA ACT 2601

For **DISTRIBUTION** queries, contact:
Email: aim.editorial@airservicesaustralia.com

For **CONTENT** queries regarding this SUP, contact:
Email: bas@globalairspaceolutions.com

KALGOORLIE-BOULDER (YPKG) NEW AND REVISED DAP PROCEDURES

1. INTRODUCTION

- 1.1 This SUP cancels and replaces SUP H115/24 with editorial changes to Appendices 3 and 4.
- 1.2 This SUP cancels and replaces the following approaches in DAP:
 - DME OR GNSS ARRIVAL
 - RNP Z RWY 11
 - VOR-Y RWY 11
 - VOR-Z RWY 11
 - RNP RWY 18
 - VOR-Y RWY 18
 - VOR-Z RWY 18
 - RNP Z RWY 29
 - VOR-Y RWY 29
 - VOR-Z RWY 29
 - NDB RWY 29
 - RNP RWY 36
 - VOR-Y RWY 36
 - VOR-Z RWY 36
- 1.3 This AIP SUP publishes revised and new procedures.

- 1.4 General amendments are 10 NM MSA, OBST 1657FT, CAUTION, Circling minima and NO CIRCLING IN SECTOR NE OF RWY 11/29 AND RWY 18/36.
- 1.5 RNP Z RWY 29 will be replaced by RNP Z RWY 29 (LNAV ONLY) and RNP Y RWY 29 (LNAV/VNAV ONLY).
- 1.6 NDB RWY 29 will be cancelled and replaced by NDB RWY 11.

2. IMPLEMENTATION

- 2.1 The procedures in the appendices become effective 202410021600 UTC.

3. NEW WAYPOINTS

WAYPOINT	LATITUDE	LONGITUDE	WAYPOINT NAME
KG3EF	304945.86S	1213457.44E	FAF RNP Y RWY 29
KG3EH	304643.01S	1212528.78E	MA RNP Y RWY 29 MA RNP Z RWY 29
KG3EI	305115.68S	1213937.80E	IF RNP Y RWY 29
KG3EJ	304726.43S	1214323.35E	Right IAF RNP Y RWY 29
KG3EK	305300.16S	1214504.74E	Straight IAF RNP Y RWY 29
KG3EL	305616.42S	1213935.66E	Left IAF RNP Y RWY 29
KG3ZF	305028.65S	1213416.95E	FAF RNP Z RWY 29
KG3ZI	305300.71S	1213917.72E	IF RNP Z RWY 29
KG3ZM	304756.40S	1212916.45E	MAPt RNP Z RWY 29
KG3ZQ	304948.74S	1214346.06E	Right IAF RNP Z RWY 29
KG3ZR	305532.59S	1214418.76E	Straight IAF RNP Z RWY29
KG3ZS	305756.55S	1213815.00E	Left IAF RNP Z RWY 29
RW29	304740.52S	1212827.10E	MAPt RNP Y RWY 29

4. DELETED WAYPOINTS

KG2EF	KG2EI	KG2EJ	KG2EK	KG2EL	KG2EM	KG2EH
-------	-------	-------	-------	-------	-------	-------

5. PROCEDURE DIFFERENCES

- 5.1 RNP Z RWY 29 (LNAV ONLY) is a new procedure
- 5.2 RNP Y RWY 29 (LNAV/VNAV ONLY) is a new procedure
- 5.3 VOR-Z RWY 29 include:
- LR-119 KG
 - STDF at 3.5 DME
 - FAF at 5 DME
 - MA Track
 - OBST 1657FT and CAUTION
 - Circling Minima
 - No Circling in Sector NE of RWY 11/29 and RWY 18/36
 - 10 NM MSA
 - Logo
 - Editorial
- 5.4 VOR-Y RWY 29 include:
- MDA/H
 - Magnetic Heading CAT C&D
 - MOCA
 - MA Track
 - OBST 1657FT and CAUTION
 - Circling Minima
 - No Circling in Sector NE of RWY 11/29 and RWY 18/36
 - 10 NM MSA
 - Logo
 - Editorial
- 5.5 NDB RWY 29 is cancelled
- 5.6 NDB RWY 11 is a new procedure

5.7 All other procedures mentioned in 1.2:

- OBST 1657FT
- CAUTION
- Circling Minima
- No Circling in Sector NE of RWY 11/29 and RWY 18/36
- 10 NM MSA

6. CANCELLATION

6.1 This SUP will be cancelled when the new and revised charts are incorporated into AIP DAP, expected to be in DAP Amendment 181, effective 28 November 2024.

7. DISTRIBUTION

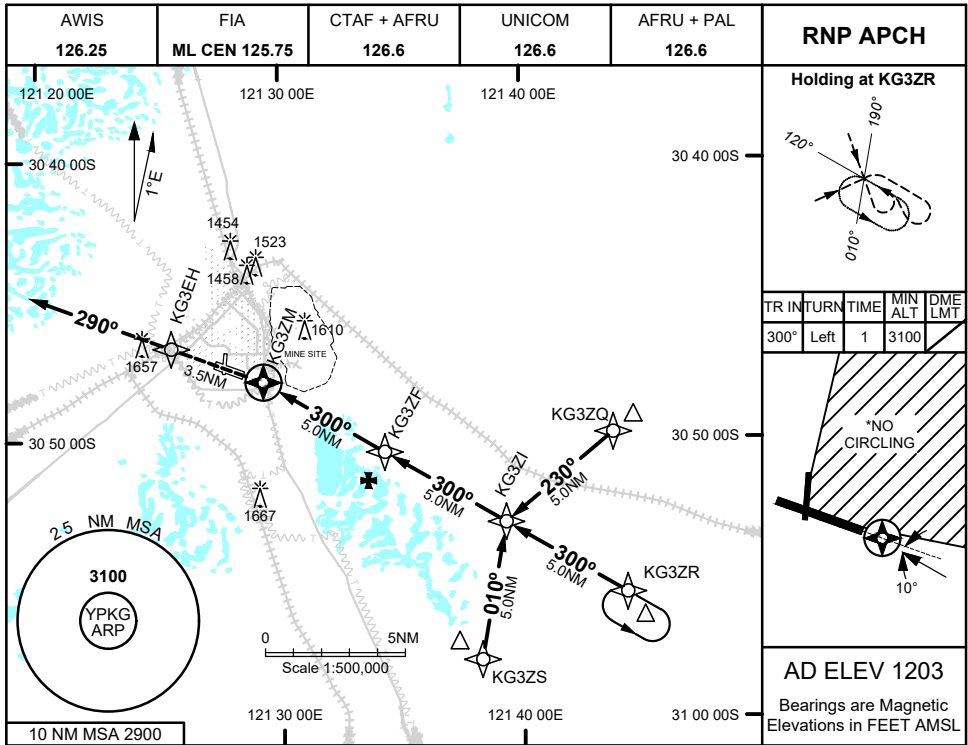
7.1 Airservices Australia website only.

Appendices

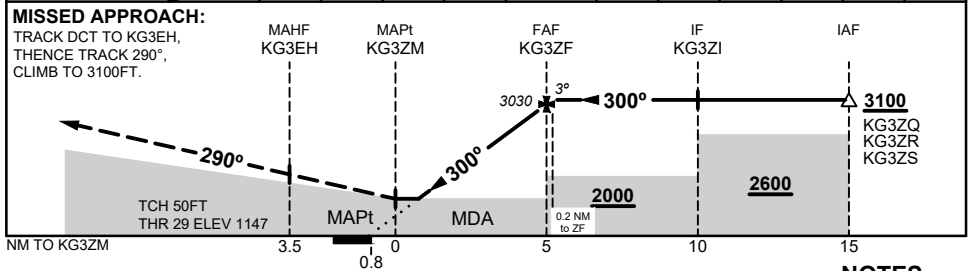
1. RNP Z RWY 29 (LNAV ONLY)
2. RNP Y RWY 29 (LNAV/VNAV ONLY)
3. VOR-Z RWY 29
4. VOR-Y RWY 29
5. NDB RWY 11
6. DME OR GNSS ARRIVAL
7. VOR-Z RWY 11
8. VOR-Y RWY 11
9. RNP Z RWY 11
10. VOR-Z RWY 18
11. VOR-Y RWY 18
12. RNP RWY 18
13. VOR-Z RWY 36
14. VOR-Y RWY 36
15. RNP RWY 36

**APPENDIX 01
TO SUP H117/24**

KALGOORLIE-BOULDER, WA (YPKG)



NM TO NEXT WPT	KG3ZM	1.1	2	3	4	KG3ZF	0.2				
ALT (3° APCH PATH)		1780	2070	2390	2710	3030	3100				



NOTES

1. MAX IAS:
INITIAL : 210KTS
 - *2.NO CIRCLING IN
SECTOR NE OF RWY
11/29 AND RWY 18/36
- CAUTION:**
1657FT RADIO MAST
3NM/277° FROM ARP

CATEGORY	A	B	C	D
LNAV	1780 (633 - 3.6)			
CIRCLING*	2080 (877 - 2.4)		2180 (977 - 4.0) 2200 (997 - 5.0)	
ALTERNATE	(1377 - 4.4)		(1477 - 6.0) (1497 - 7.0)	

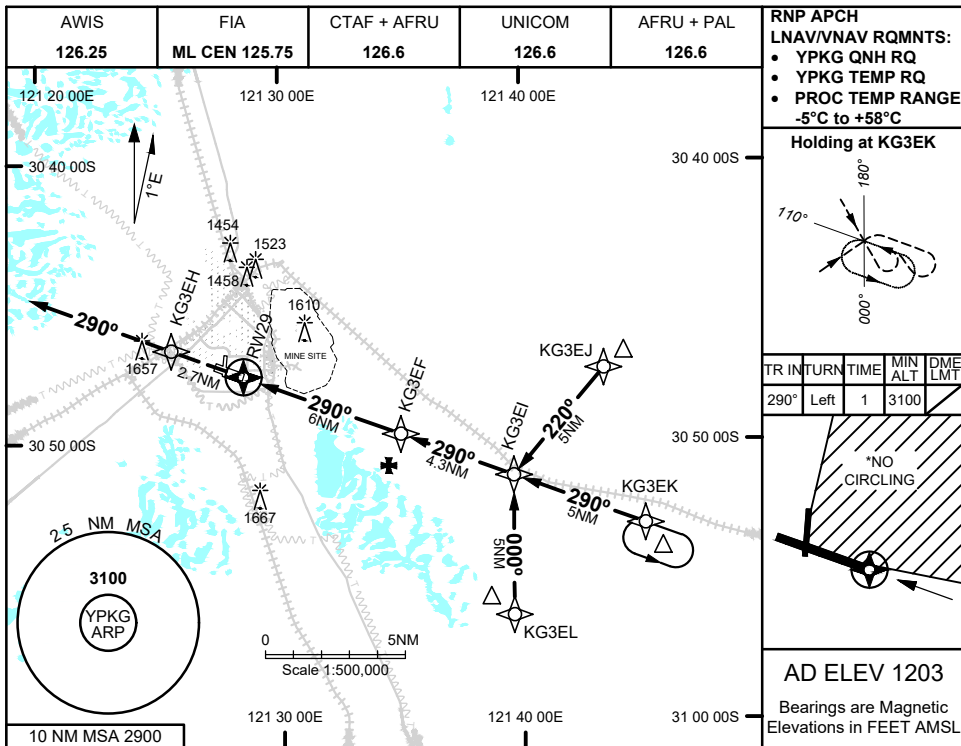
Changes: NEW PROCEDURE

PKGGN07-SUP

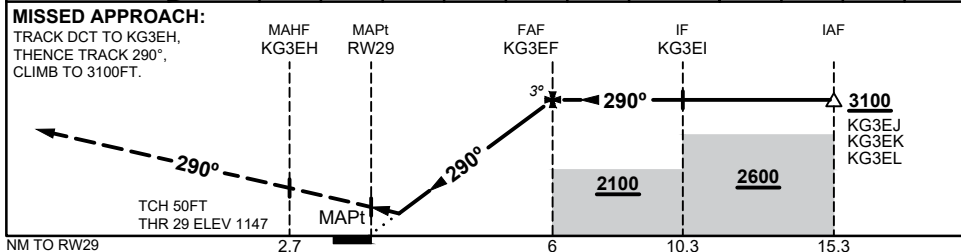
APPENDIX 02
TO SUP H117/24

RNP Y RWY 29 (LNAV/VNAV ONLY)

KALGOORLIE-BOULDER, WA (YPKG)



NM TO NEXT WPT	RW29	0.7	1	2	3	4	5	KG3EF			
ALT (3° APCH PATH)		1420	1520	1830	2150	2470	2790	3100			



NOTES

1. MAX IAS:
INITIAL : 210KTS
- *2.NO CIRCLING IN
SECTOR NE OF
RWY 11/29 AND
RWY 18/36

CATEGORY	A	B	C	D
LNAV/VNAV	1420 (273 - 1.5)			
CIRCLING*	2080 (877 - 2.4)		2180 (977 - 4.0)	
ALTERNATE	(1377 - 4.4)		(1497 - 7.0)	

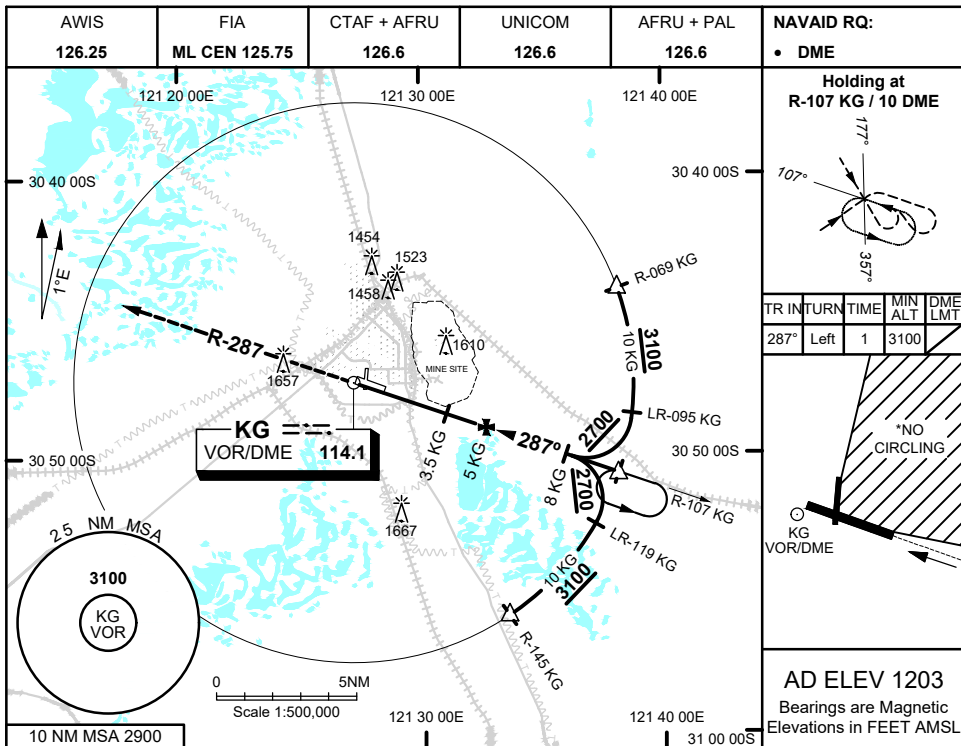
CAUTION:
1657FT RADIO MAST
3NM/277° FROM ARP

Changes: NEW PROCEDURE

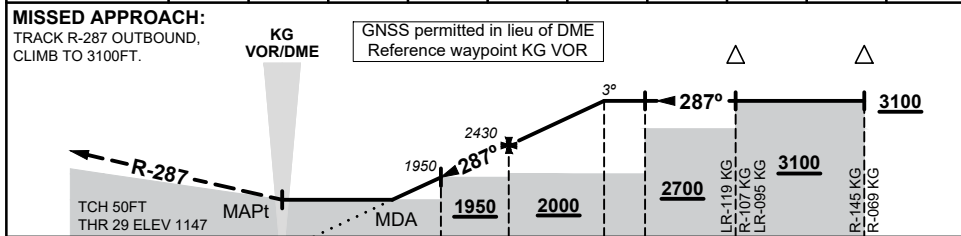
PKGGN08-SUP

APPENDIX 03
TO SUP H117/24

VOR-Z RWY 29
KALGOORLIE-BOULDER, WA (YPKG)



DIST BY DME	3	3.5	4	5	6	7	7.1		
ALT (3° APCH PATH)	1780	1950	2110	2430	2750	3060	3100		



NOTES

1. MAX IAS:
INITIAL : 210KTS
- *2.NO CIRCLING IN
SECTOR NE OF RWY
11/29 AND RWY 18/36

CATEGORY	A	B	C	D
S-I VOR	1780 (633 - 3.6)			
CIRCLING*	2080 (877 - 2.4)	2180 (977 - 4.0)	2200 (997 - 5.0)	
ALTERNATE	(1377 - 4.4)		(1497 - 7.0)	

CAUTION:
1657FT RADIO MAST
2.5NM/R-280 FROM
KG VOR/DME.

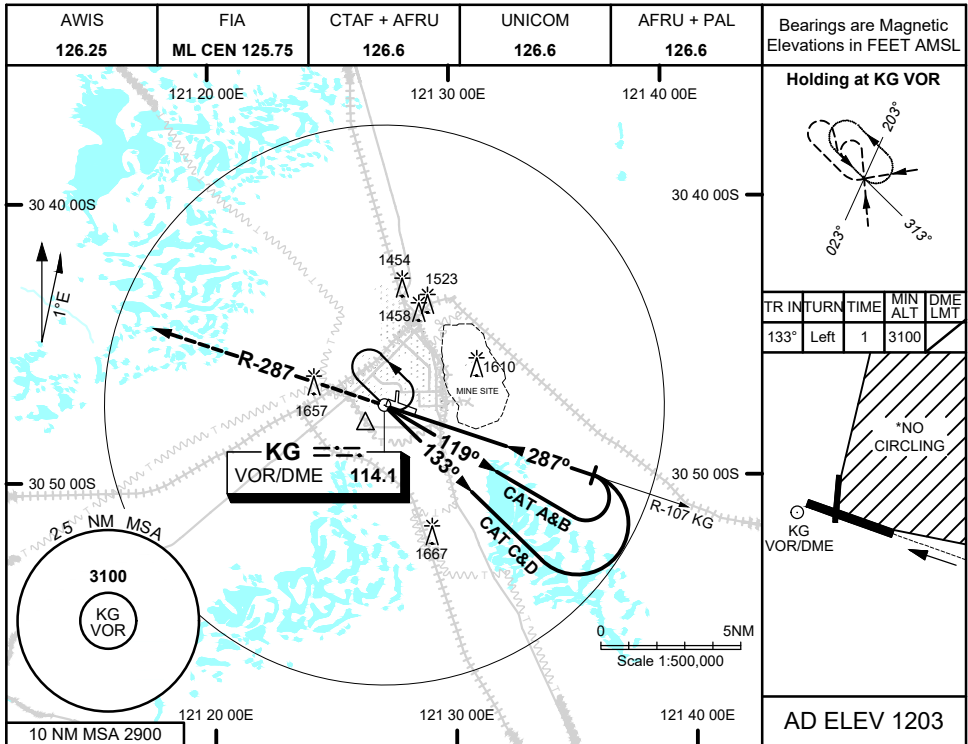
Changes: LR-119 KG, STDF 3.5NM, FAF, OBST 1657FT, CAUTION, CIRCLING MINIMA,
NO CIRCLING AREA, 10 NM MSA, Editorial

PKGVO03-SUP

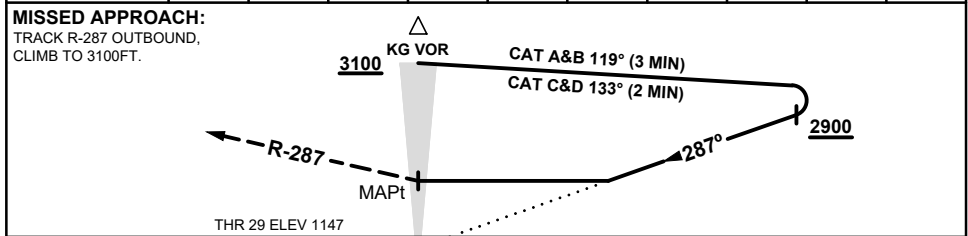
APPENDIX 04
TO SUP H117/24

VOR-Y RWY 29

KALGOORLIE-BOULDER, WA (YPKG)



DIST BY DME	NOT APPLICABLE			
ALT				



NOTES

1. MAX IAS:
INITIAL :210KTS
- *2.NO CIRCLING IN
SECTOR NE OF RWY
11/29 AND RWY 18/36
- *3.CIRCLING VALUES
ONLY APPLY TO THIS
PROCEDURE

CATEGORY	A	B	C	D
S-I VOR	2100 (953 - 5.0)			
CIRCLING*	2310 (1107 - 2.4)	2410 (1207 - 4.0)		2410 (1207 - 5.0)
ALTERNATE	(1607 - 4.4)		(1707 - 6.0) (1707 - 7.0)	

CAUTION:

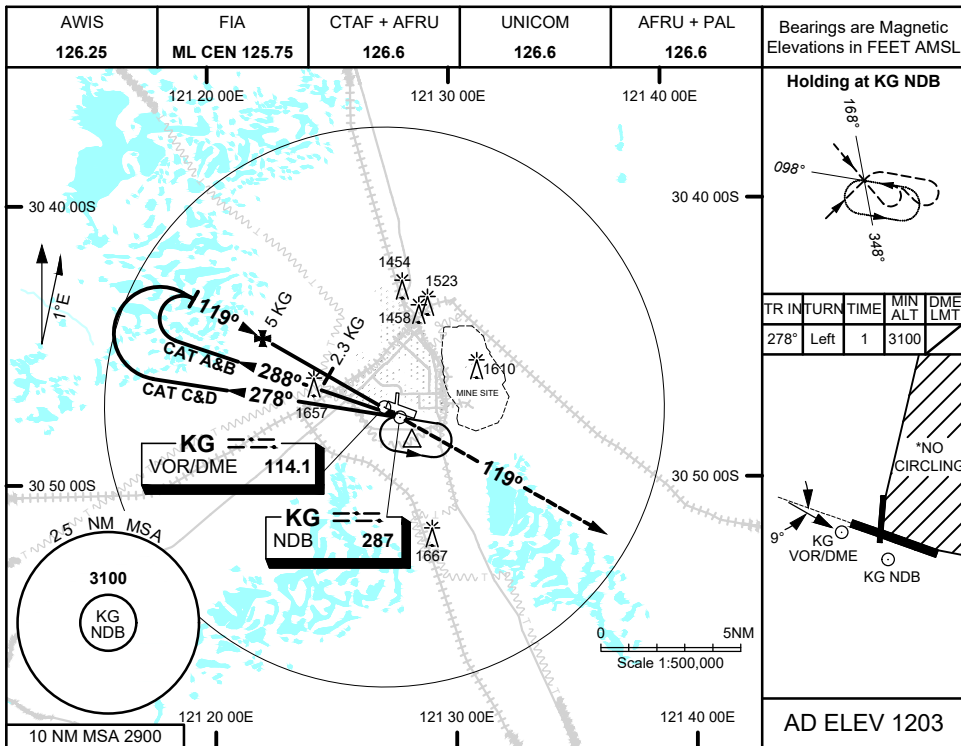
1657FT RADIO MAST
2.5NM/R-280 FROM KG
VOR/DME.

Changes: MDA/H, MAGNETIC HEADING CAT C&D, MOCA, MISSED APPROACH, OBST 1657FT,
CAUTION, CIRCLING MINIMA, NO CIRCLING AREA, 10 NM MSA, Editorial

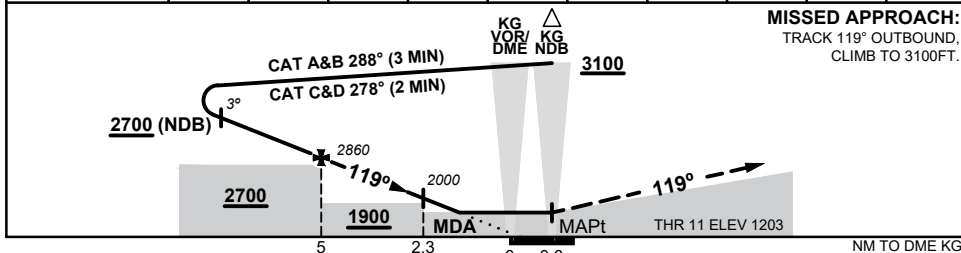
PKG007-SUP

APPENDIX 05
TO SUP H117/24

NDB RWY 11
KALGOORLIE-BOULDER, WA (YPKG)



DIST BY DME	5.8	5	4	3	2.3	2	1.7			
ALT (3° APCH PATH)	3100	2860	2540	2220	2000	1900	1810			



NOTES

1. MAX IAS:
INITIAL : 210KTS
 - *2.NO CIRCLING IN
SECTOR NE OF RWY
11/29 AND RWY 18/36
- CAUTION:**
1657FT RADIO MAST
2.5NM KG DME/B-102°
TO KG NDB.

CATEGORY	A	B	C	D
S-I NDB	2050 (847 - 4.8)			
S-I NDB/DME	1810 (607 - 3.4)			
CIRCLING*	2080 (877 - 2.4)	2180 (977 - 4.0)		2200 (997 - 5.0)
ALTERNATE	(1377 - 4.4)		(1497 - 7.0)	

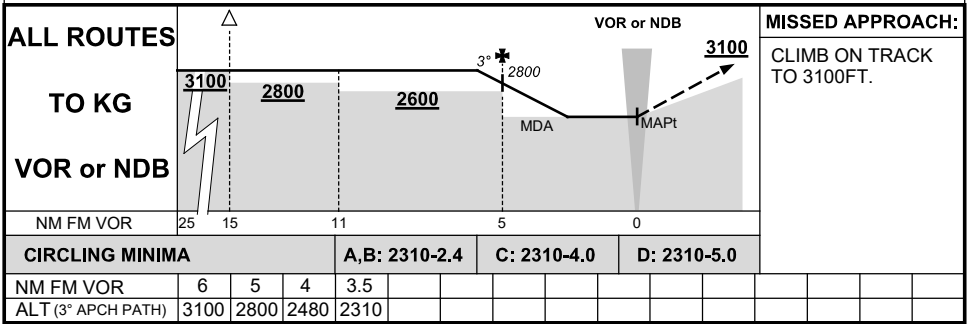
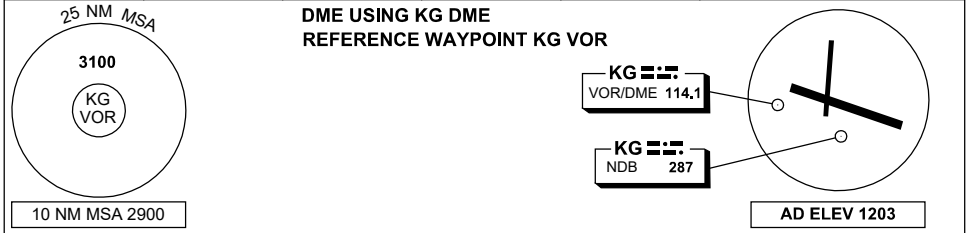
Changes: NEW PROCEDURE

PKGNB02-SUP

**APPENDIX 6
TO SUP H117/24**

**DME or GNSS ARRIVAL PROCEDURES
KALGOORLIE-BOULDER, WA (YPKG)**

AWIS 126.25	FIA ML CEN 125.75	CTAF+AFRU 126.6	UNICOM 126.6	AFRU+PAL 126.6	Bearings are Magnetic Elevations in FEET AMSL
----------------	----------------------	--------------------	-----------------	-------------------	--



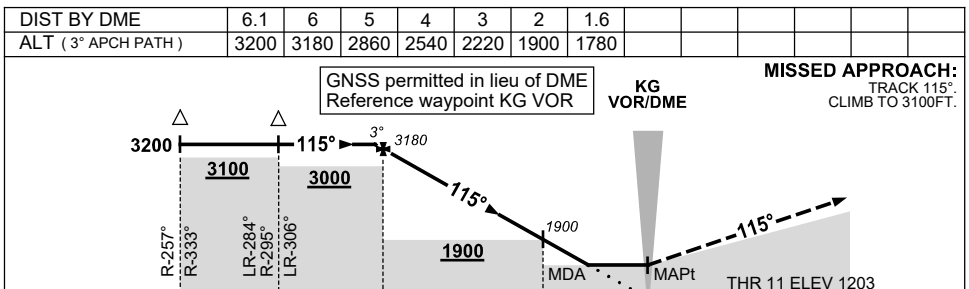
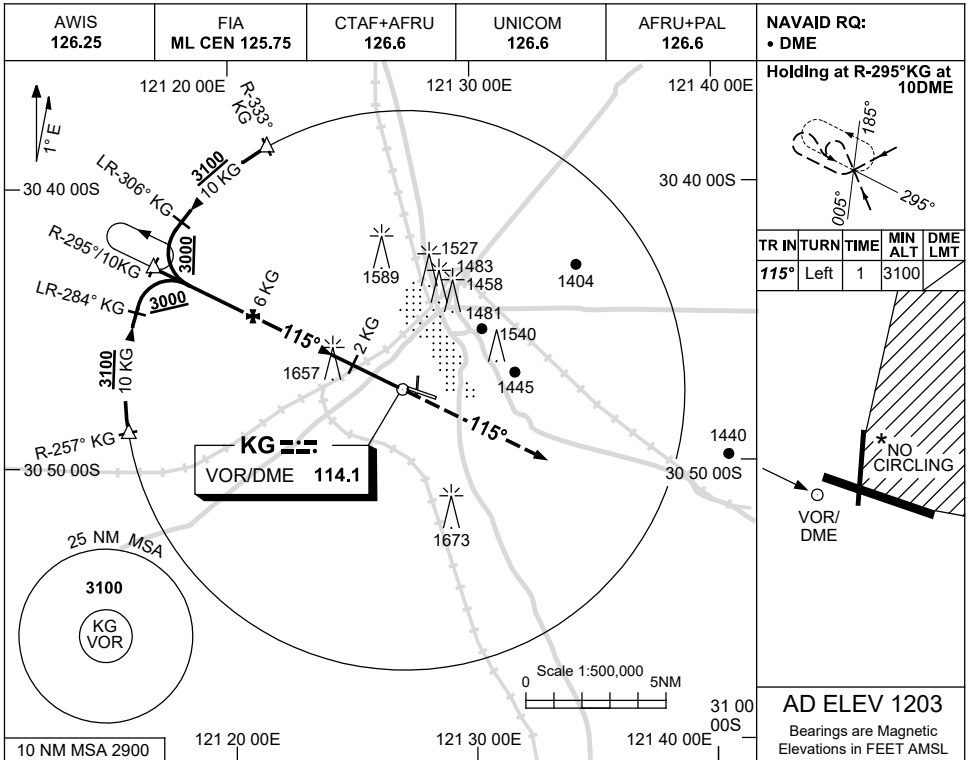
Changes: MINIMA, 10NM MSA.

**APPENDIX 7
TO SUP H117/24**

USE QNH

KALGOORLIE-BOULDER, WA (YPKG)

VOR-Z RWY 11



CATEGORY	A	B	C	D
S-I VOR/DME	1780 (577-3.3)			
CIRCLING	2080 (877-2.4)		2180(977-4.0) 2200(997-5.0)	
ALTERNATE	(1377-4.4)		(1477-6.0) (1497-7.0)	

NOTES

- MAX IAS:
INITIAL : 210KT.
- NO CIRCLING IN SECTOR NE OF RWY 11/29 AND RWY 18/36.

CAUTION:
1657FT RADIO MAST
2.5NM 280°KG VOR/
DME ON RWY APCH
PATH.

Changes: NO CIRCLING AREA, MINIMA, 10NM MSA, 1657FT TWR. PKGVO01-SUP

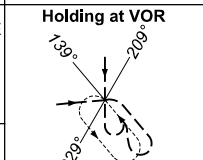
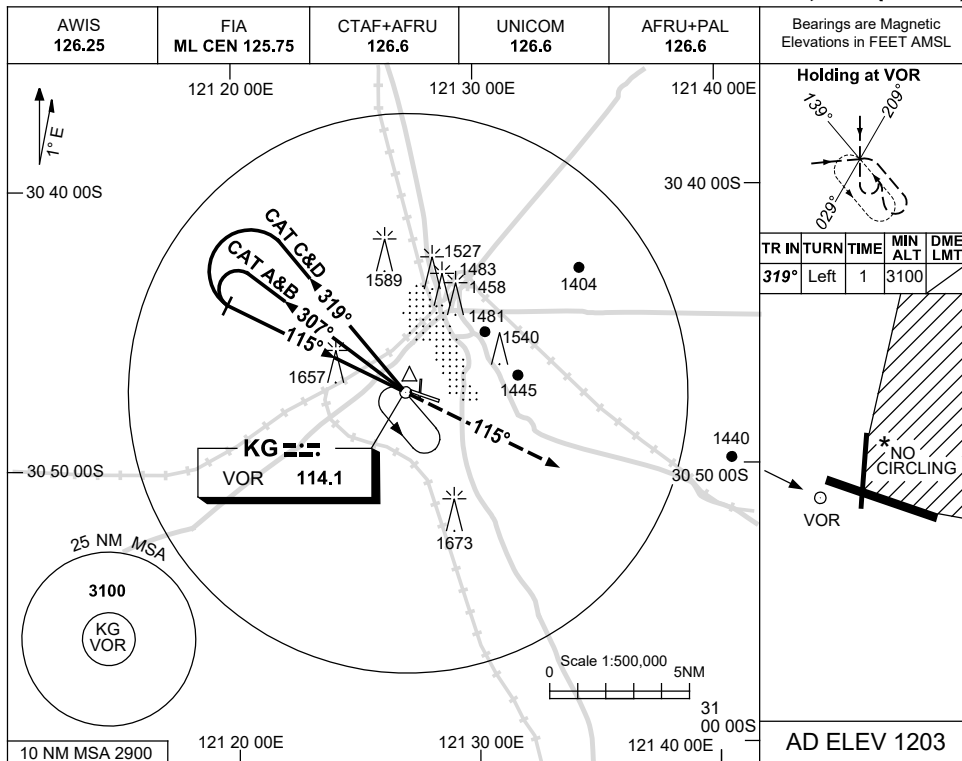


**APPENDIX 8
TO SUP H117/24**

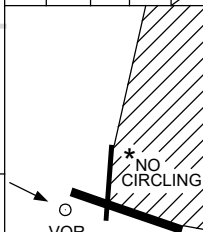
USE QNH

KALGOORLIE-BOULDER, WA (YPKG)

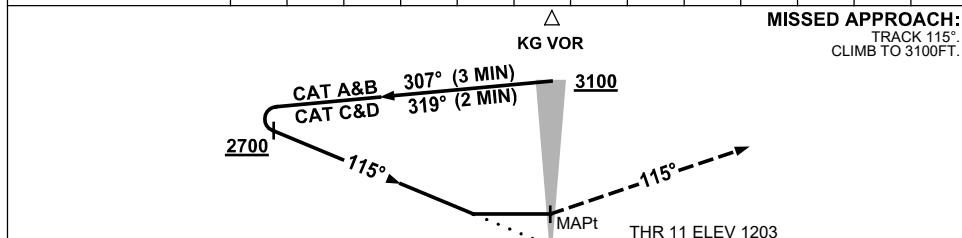
VOR-Y RWY 11



TR IN	TURN	TIME	MIN ALT	DME LMT
319°	Left	1	3100	



DIST BY DME	NOT APPLICABLE
ALT	



NOTES

- MAX IAS:
INITIAL : 210KT.
- NO CIRCLING IN SECTOR NE OF RWY 11/29 AND RWY 18/36.

CAUTION:
1657FT RADIO MAST
2.5NM 280°KG VOR/
DME ON RWY APCH
PATH.

CATEGORY	A	B	C	D
S-I VOR	2030 (827-4.7)			
CIRCLING	2080 (877-2.4)	2180 (977-4.0)	2200 (997-5.0)	
ALTERNATE	(1377-4.4)	(1477-6.0)	(1497-7.0)	

Changes: NO CIRCLING AREA, MINIMA, 10NM MSA, 1657FT TWR.

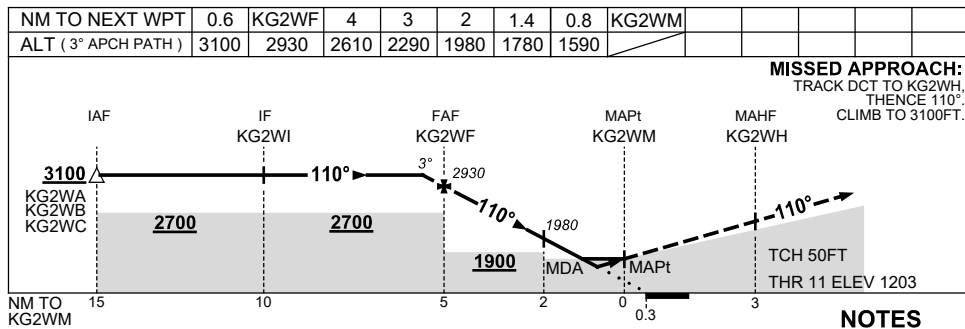
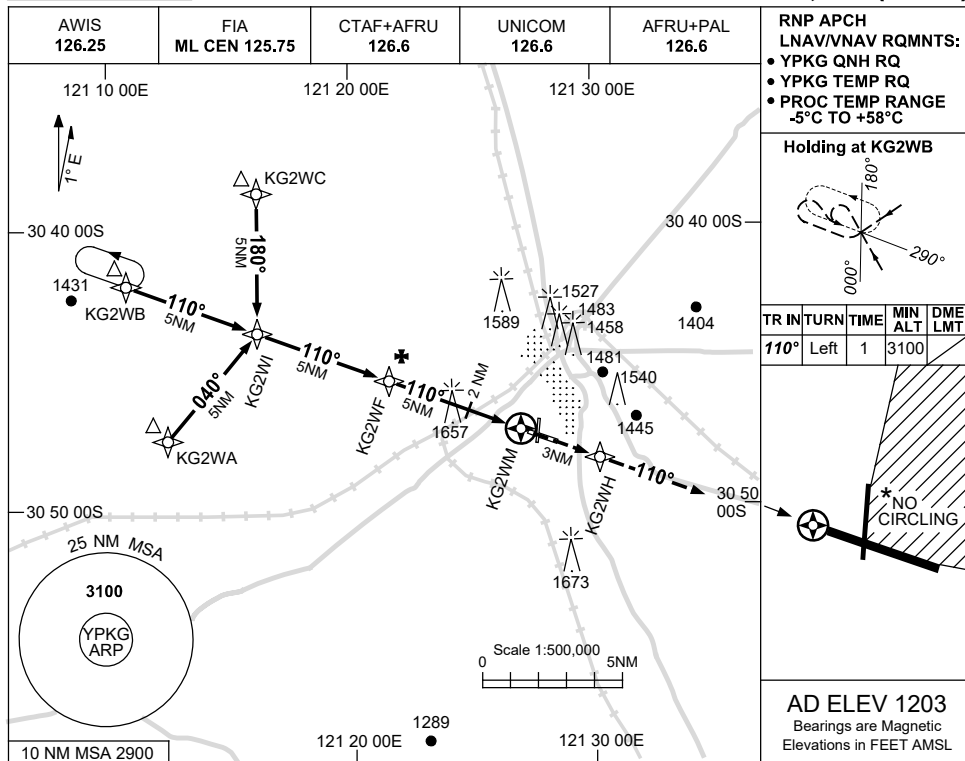
PKGVO05-SUP

**APPENDIX 9
TO SUP H117/24**

USE QNH

RNP Z RWY 11

KALGOORLIE-BOULDER, WA (YPKG)



CATEGORY	A	B	C	D
LNAV/VNAV		1590 (387-2.2)		
LNAV		1780 (577-3.3)		
CIRCLING	2080 (877-2.4)		2180 (977-4.0)	2200 (997-5.0)
ALTERNATE	(1377-4.4)		(1477-6.0)	(1497-7.0)

Changes: NO CIRCLING AREA, MINIMA, 10NM MSA, 1657FT TWR.

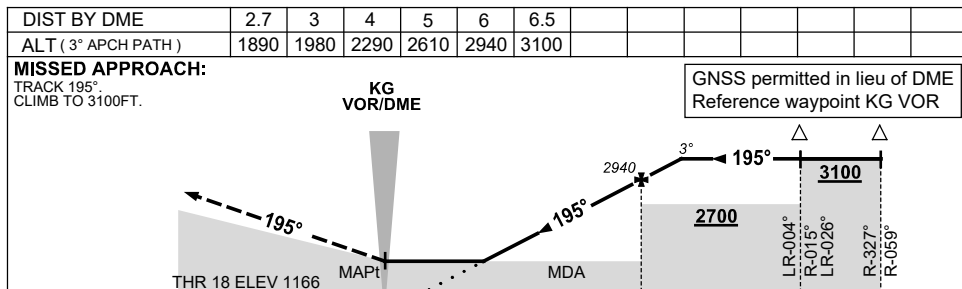
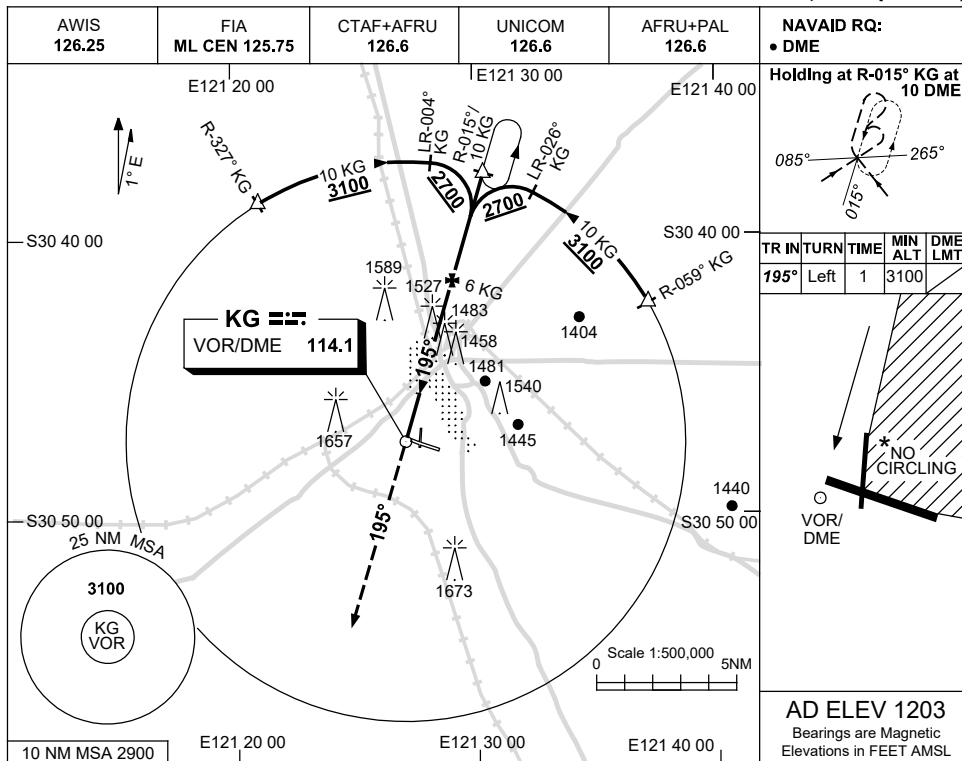
PKGGN01-SUP



**APPENDIX 10
TO SUP H117/24**

USE QNH

**VOR-Z RWY 18
KALGOORLIE-BOULDER, WA (YPKG)**



NM BY DME							
------------------	--	--	--	--	--	--	--

CATEGORY	A	B	C	D
S-I VOR/DME	1890 (724-4.1)		NOT APPLICABLE	
CIRCLING	2080 (877-2.4)			
ALTERNATE	(1377-4.4)			

NOTES

- MAX IAS:
INITIAL : 210KT.
- NO CIRCLING IN SECTOR NE OF RWY 11/29 AND RWY 18/36.

CAUTION:
1657FT RADIO MAST
2.5NM 280°KG VOR/
DME ON RWY APCH PATH.

Changes: NO CIRCLING AREA, MINIMA, 10NM MSA, 1657FT TWR.

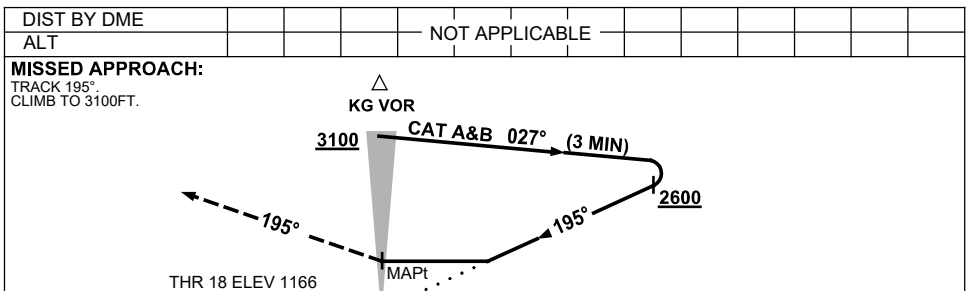
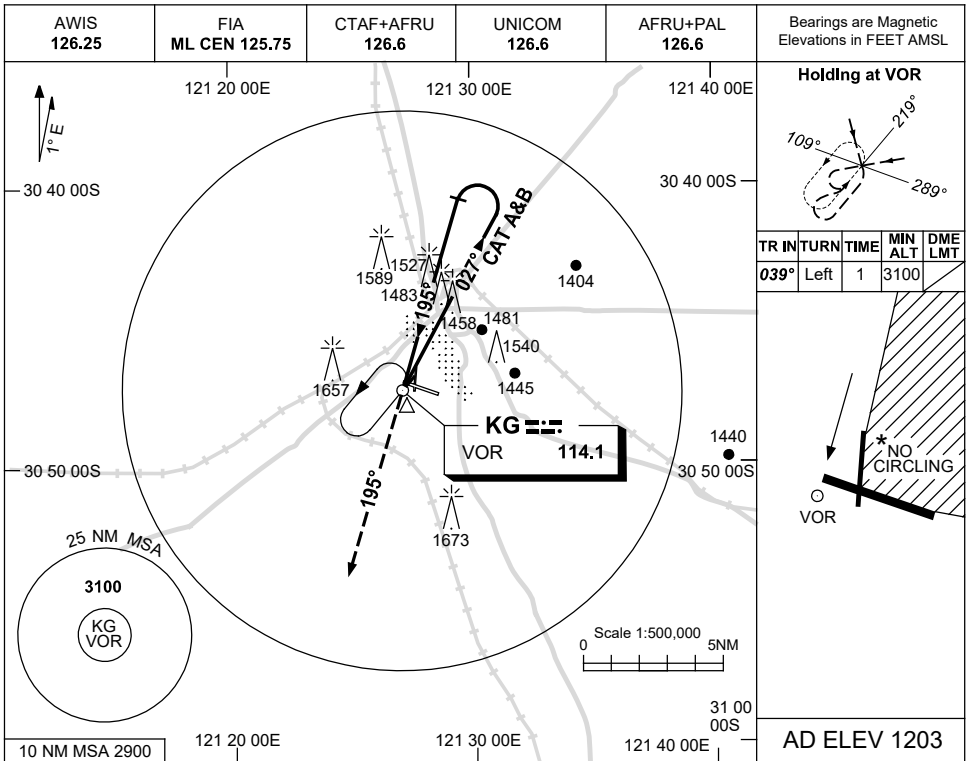
PKGVO02-SUP

**APPENDIX 11
TO SUP H117/24**

USE QNH

VOR-Y RWY 18

KALGOORLIE-BOULDER, WA (YPKG)



NOTES

CATEGORY	A	B	C	D
S-I VOR	1940 (774-4.4)		NOT APPLICABLE	
CIRCLING	2080 (877-2.4)			
ALTERNATE	(1377-4.4)			

- NO CIRCLING IN SECTOR NE OF RWY 11/29 AND RWY 18/36.
CAUTION: 1657FT RADIO MAST 2.5NM 280°KG VOR/ DME ON RWY APCH PATH.

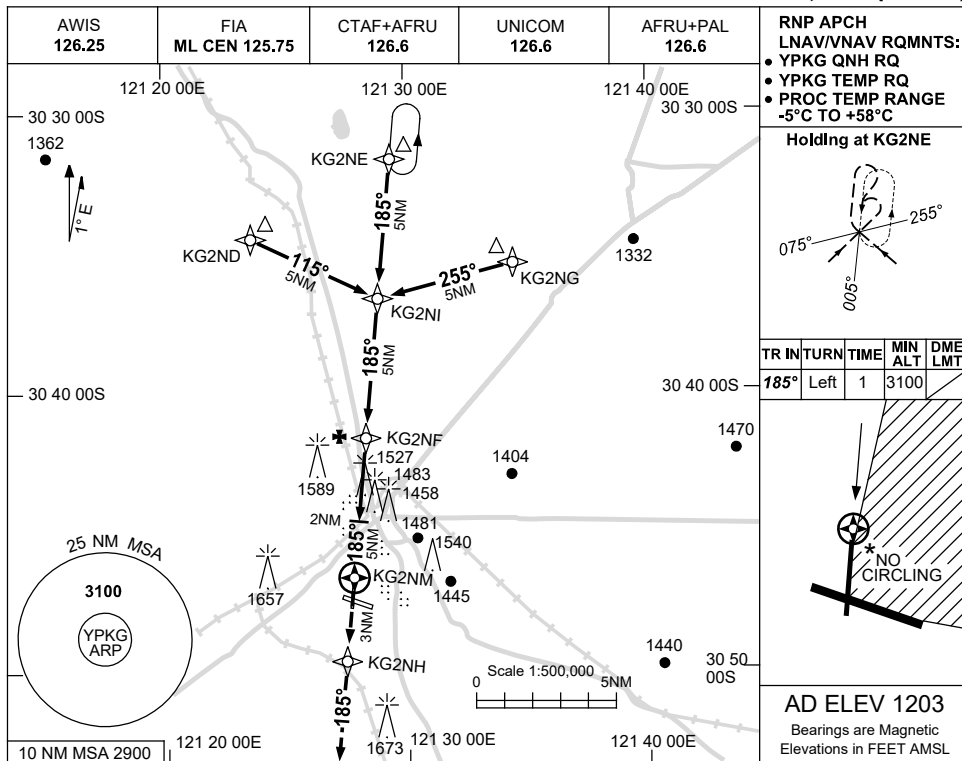
Changes: NO CIRCLING AREA, MINIMA, 10NM MSA, 1657FT TWR.

PKGVO06-SUP

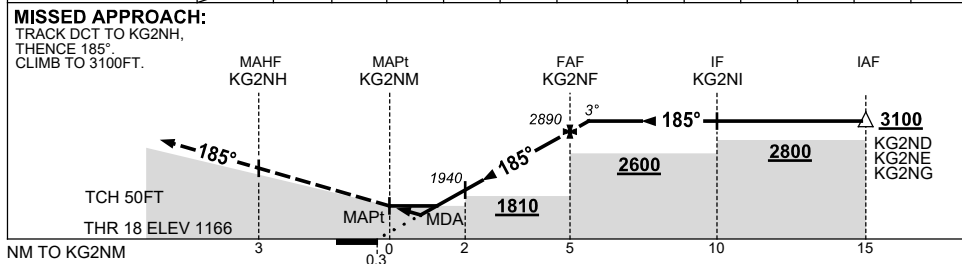
**APPENDIX 12
TO SUP H117/24**

**USE QNH
KALGOORLIE-BOULDER, WA (YPKG)**

RNP RWY 18



NM TO NEXT WPT	KG2NM	0.7	1.5	2	3	4	KG2NF	0.6			
ALT (3° APCH PATH)		1510	1780	1940	2260	2580	2890	3100			



NOTES

CATEGORY	A	B	C	D
LNAV/VNAV	1510 (344-1.9)		NOT APPLICABLE	
LNAV	1780 (614-3.5)			
CIRCLING	2080 (877-2.4)			
ALTERNATE	(1377-4.4)			

1. NO CIRCLING IN SECTOR NE OF RWY 11/29 AND RWY 18/36.
CAUTION: 1657FT RADIO MAST 2.5NM 280°KG VOR/ DME ON RWY APCH PATH.

Changes: NO CIRCLING AREA, MINIMA, 10NM MSA, 1657FT TWR.

PKG02-SUP

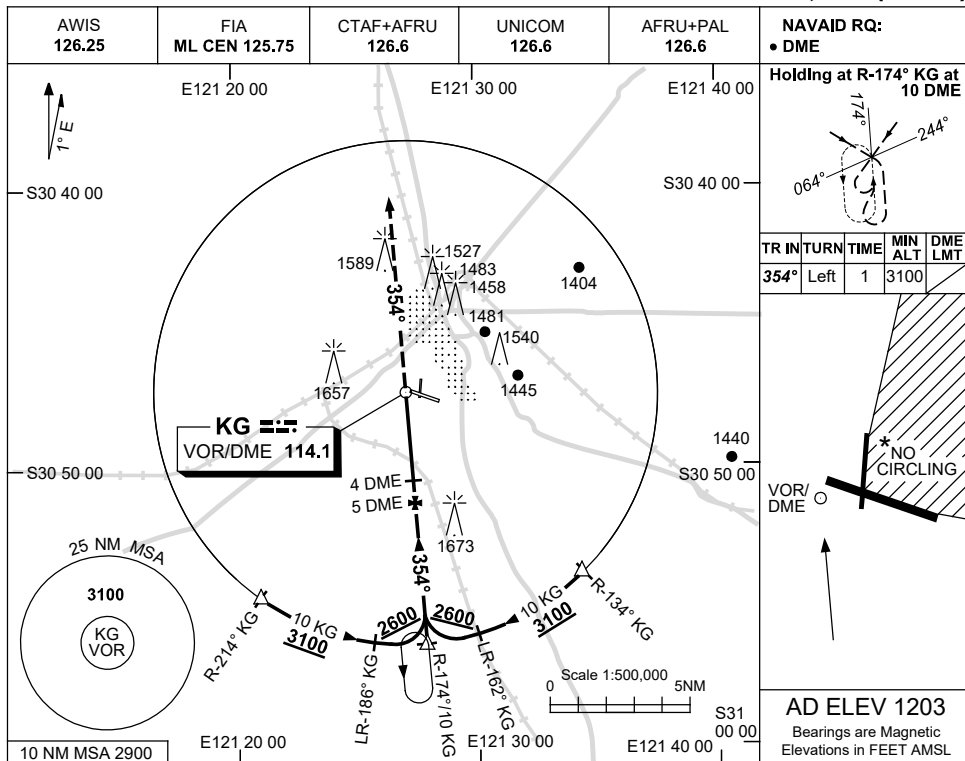


**APPENDIX 13
TO SUP H117/24**

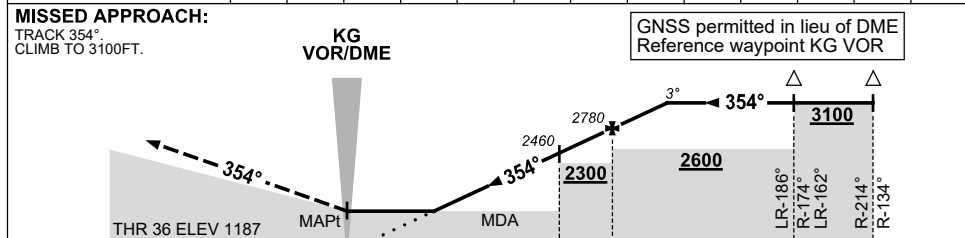
USE QNH

KALGOORLIE-BOULDER, WA (YPKG)

VOR-Z RWY 36



DIST BY DME	1.9	2	3	4	5	6				
ALT (3° APCH PATH)	1780	1820	2150	2460	2780	3100				



NOTES

1. MAX IAS:
INITIAL : 210KT.
 2. NO CIRCLING IN
SECTOR NE OF RWY
11/29 AND RWY 18/36.
- CAUTION:**
1657FT RADIO MAST
2.5NM 280°KG VOR/
DME ON RWY APCH
PATH.

CATEGORY	A	B	C	D
S-I VOR/DME	1780 (593-3.4)		NOT APPLICABLE	
CIRCLING	2080 (877-2.4)			
ALTERNATE	(1377-4.4)			

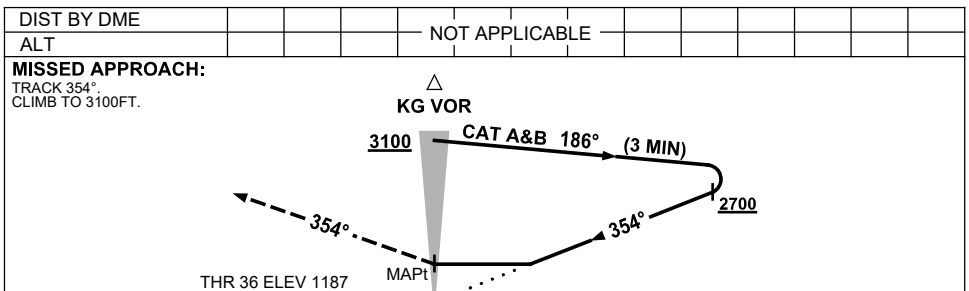
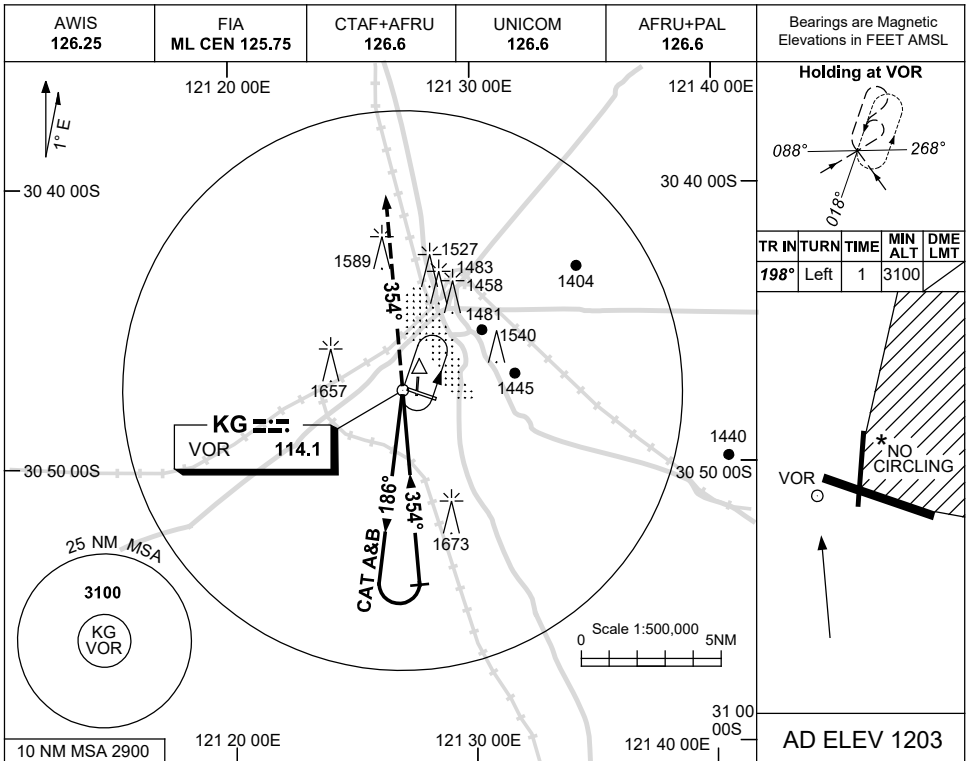
Changes: NO CIRCLING AREA, MINIMA, 10NM MSA, 1657FT TWR.

PKGVO04-SUP

**APPENDIX 14
TO SUP H117/24**

USE QNH

**VOR-Y RWY 36
KALGOORLIE-BOULDER, WA (YPKG)**



NOTES

CATEGORY	A	B	C	D
S-I VOR	2000 (813-4.6)		NOT APPLICABLE	
CIRCLING	2080 (877-2.4)			
ALTERNATE	(1377-4.4)			

- NO CIRCLING IN SECTOR NE OF RWY 11/29 AND RWY 18/36.
CAUTION: 1657FT RADIO MAST 2.5NM 280°KG VOR/ DME ON RWY APCH PATH.

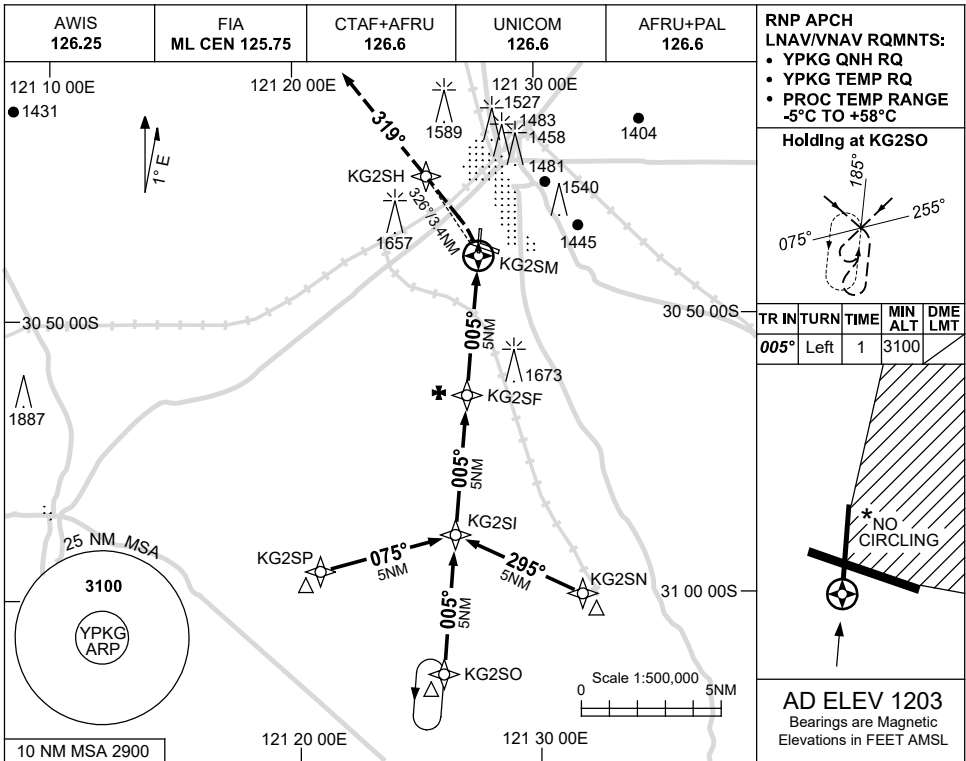
Changes: NO CIRCLING AREA, MINIMA, 10NM MSA, 1657FT TWR.

PKGVO08-SUP

**APPENDIX 15
TO SUP H117/24**

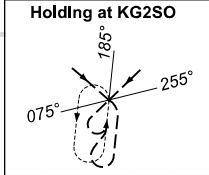
**USE QNH
KALGOORLIE-BOULDER, WA (YPKG)**

RNP RWY 36

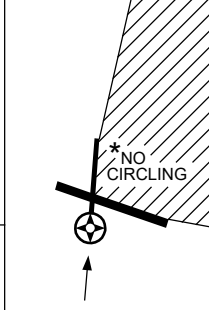


**RNP APCH
LNAV/VNAV RQMTS:**

- YPKG QNH RQ
- YPKG TEMP RQ
- PROC TEMP RANGE -5°C TO +58°C

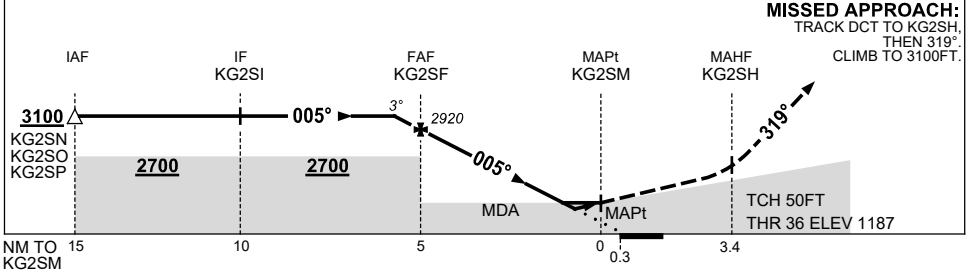


TR IN	TURN	TIME	MIN ALT	DME LMT
005°	Left	1	3100	



AD ELEV 1203
Bearings are Magnetic
Elevations in FEET AMSL

NM TO NEXT WPT	0.6	KG2SF	4	3	2	1.4	1.1	KG2SM				
ALT (3° APCH PATH)	3100	2920	2600	2280	1960	1780	1690					



MISSED APPROACH:
TRACK DCT TO KG2SH,
THEN 319°.
CLIMB TO 3100 FT.

NOTES

CATEGORY	A	B	C	D
LNAV/VNAV	1690 (503-2.8)		NOT APPLICABLE	
LNAV	1780 (593-3.4)			
CIRCLING	2080 (877-2.4)			
ALTERNATE	(1377-4.4)			

1. NO CIRCLING IN
SECTOR NE OF RWY
11/29 AND RWY 18/36.

CAUTION:
1657 FT RADIO MAST
2.5 NM 280° KG VOR/
DME ON RWY APCH
PATH.

Changes: NO CIRCLING AREA, MINIMA, 10NM MSA, 1657 FT TWR.

PKGKN04-SUP

