

**AIP SUPPLEMENT
(SUP)****H116/24****Effective: 202409120230 UTC**AERONAUTICAL INFORMATION SERVICE,
AIRSERVICES AUSTRALIA, GPO BOX 367,
CANBERRA ACT 2601For **DISTRIBUTION** queries, contact:
Email: aim_editorial@airservicesaustralia.comFor **CONTENT** queries regarding this SUP, contact:
Email: afd.airspace@defence.gov.au Phone: 02 6128 4856**MILITARY EXERCISE 'KAKADU 2024'
NORTHERN TERRITORY
12 – 18 SEPTEMBER 2024****1. INTRODUCTION**

- 1.1 Elements of Australian and International military forces will be conducting Exercise KAKADU 2024 (KA24) over the period of 12 to 18 September 2024. The exercise involves a wide range of tactical flying exercises across Northern Territory airspace, with aircraft operating from Darwin (YPDN).
- 1.2 Increased military aviation operations at Darwin may cause delays. Pilots, including non-exercise military aircraft, should familiarise themselves with the expected airspace to be used as well as the Class G operating areas outlined in this SUP.
- 1.3 This AIP SUP describes the airspace, diversion routes, timings, access and procedures associated with this activity.

2. AIRSPACE

- 2.1 Pilots should refer to local area DSX NOTAM to confirm activation timings for permanent Special Use Airspace (SUA).
- 2.2 During the exercise period, all, or some, of the following permanent Darwin SUA will be activated, with vertical limits published by NOTAM.

IDENT	EXPECTED LEVELS	HOURS
R264ABC	SFC – FL600	NOTAM
R264EFG	SFC – 6000 (see para 2.3)	NOTAM

2.3 R264 Live Fire activities

2.3.1 Although the table above outlines that R264EFG is expected to be activated to 6,000FT for the majority of KA24, there will be a requirement to activate it to FL600 to encompass live naval gunfire serials. Pilots should refer to NOTAM for timings and vertical limits. Please note that both R264ABC and R264EFG will contain live fire activities.

2.4 Airspace timings

2.4.1 Expected activation timings are indicated below, however these are subject to change and pilots should refer to DSX NOTAM to confirm activation periods.

Expected Activation Windows 12 – 18 SEP		
R264ABC	0230 – 0400 UTC daily	1200 – 1330 Local daily
	0700 – 0830 UTC daily	1630 – 1800 Local daily
R264EFG	0230 – 0830 UTC daily	1200 – 1800 Local daily

2.5 Pilots should be aware that SUA beyond that listed within this SUP may be activated for both KA24 and other military activities. Pilots should refer to DSX, DNX and YBBB NOTAM to confirm additional SUA activations.

3. ACCESS TO KAKADU AIRSPACE

3.1 Access through active SUA described above, by non-exercise aircraft, is not available except for:

- a) Aircraft operating in the preservation of life or property (SAR, MED, POL, FFR)
- b) Aircraft with a declared emergency, and
- c) Pre-coordinated operational Border Force flights.

4. LOW LEVEL MILITARY AIRCRAFT OPERATIONS

4.1 A number of aircraft will take part in Anti-Submarine Warfare (ASW) and Anti-Surface Warfare (ASuW) activities outside of controlled airspace. These areas are graphically depicted in Appendix 2 as the Northern, Central and Western Air Operations Areas. These volumes are NOT restricted or military operating areas, but rather an area of increased military traffic in Class G airspace.

- 4.2 There is only expected to be a small number of fixed wing and rotary wing aircraft conducting operations in these areas, however, pilots should remain vigilant of aircraft conducting low level patrolling manoeuvres during both night and day. All aircraft will be compliant with AIP requirements and will be broadcasting on the appropriate mandatory broadcast frequency.
- 4.3 The Class G Operations Areas are outlined by the following coordinates:

Northern Air Operations Area	094000S 1280000E – 094000S 1310000E – 104500S 1310000E – 104500S 1280000E – 094000S 1280000E
Central Air Operations Area	094000S 1284000E – 094000S 1310000E – 115500S 1310000E then along the counter clockwise arc of a circle radius 30.00NM centre 122524S 1305423E (DN/DME) – 121600S 1302400E – 114500S 1284000E – 094000S 1284000E
Western Air Operations Area	112051S 1271943E – 113548S 1280823E then along the counter clockwise arc of a circle radius 170.00NM centre 122524S 1305423E (DN/DME) 131315S 1280720E – 132635S 1271757E then along the clockwise arc of a circle radius 220.00NM centre 122524S 1305423E (DN/DME) – 112051S 1271943E

- 4.4 The Class G Operations Areas listed above are expected to be utilised on the following dates and times:

Northern Air Operations Area	12 – 18 SEP	1200 – 2100 I/K (0230 – 1130 UTC) daily
Central Air Operations Area	12 – 14 SEP	1800 – 2130 I/K (0830 – 1200 UTC) daily
Western Air Operations Area	18 SEP	1200 – 2200 I/K (0230 – 1230 UTC)

5. DIVERSION ROUTING

- 5.1 ACFT departing and arriving to YPDN in lateral conflict with R264ABC or R264EFG when activated above A060 are required to plan via amended routing. Timings can be found in DSX NOTAM.
- 5.2 When required, ACFT should flight plan via DN294125 (north) or DN206175 (south).

6. OPERATIONS NEAR WARSHIPS

- 6.1 As outlined in Fly Neighbourly 22, Australian and foreign warships often have embarked ACFT, including UAS, which may conduct aviation operations at any time.
- 6.2 Pilots operating in Class G airspace should avoid warships by 5NM laterally or not below 2,000FT vertically whenever possible, and should not circle the warship at any time.

7. CANCELLATION

- 7.1 This SUP self-cancels at 202409181200 UTC.

8. DISTRIBUTION

- 8.1 Airservices Australia website only.

Appendices

1. Exercise KA24 Restricted Areas
2. KA24 Class G Operations Areas

1. Exercise KA24 Special Use Airspace

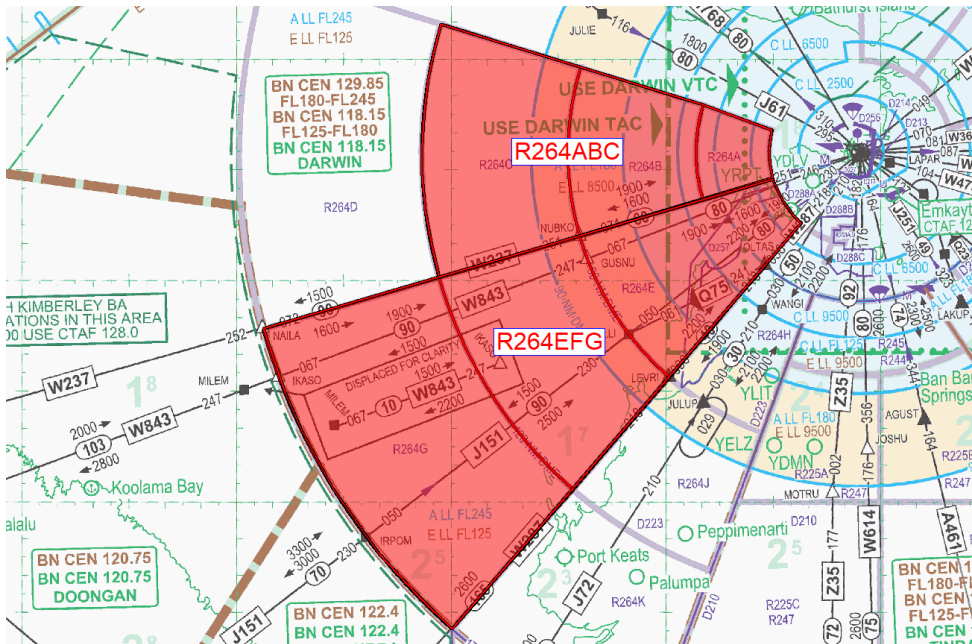


Figure 1. R264 SUA

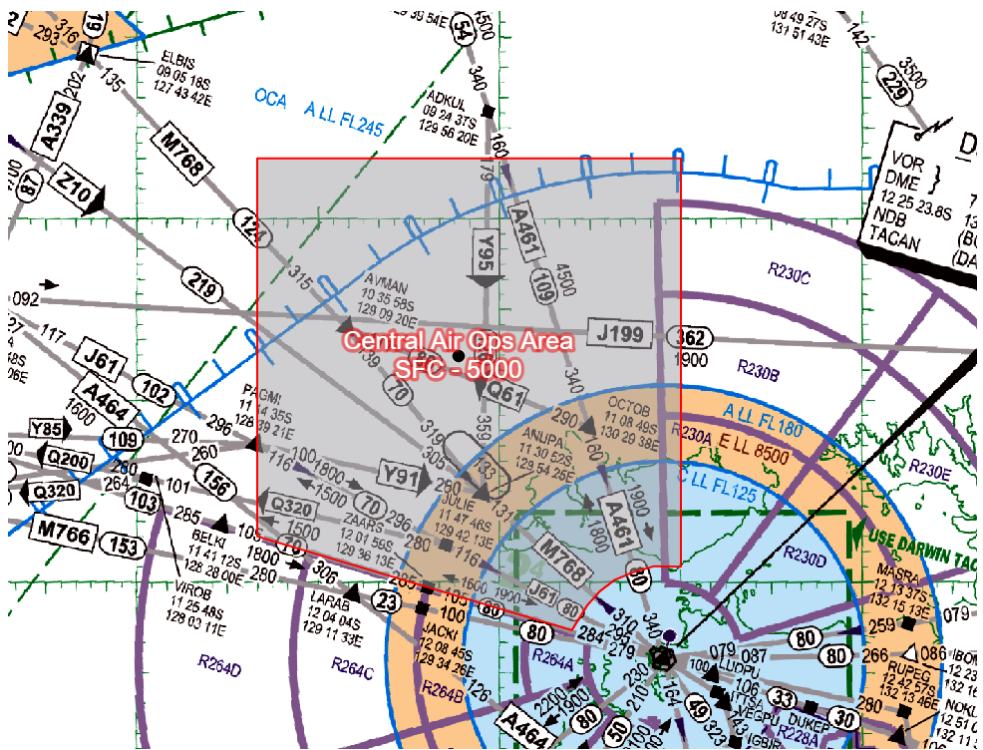


Figure 3. Central Air Ops Area

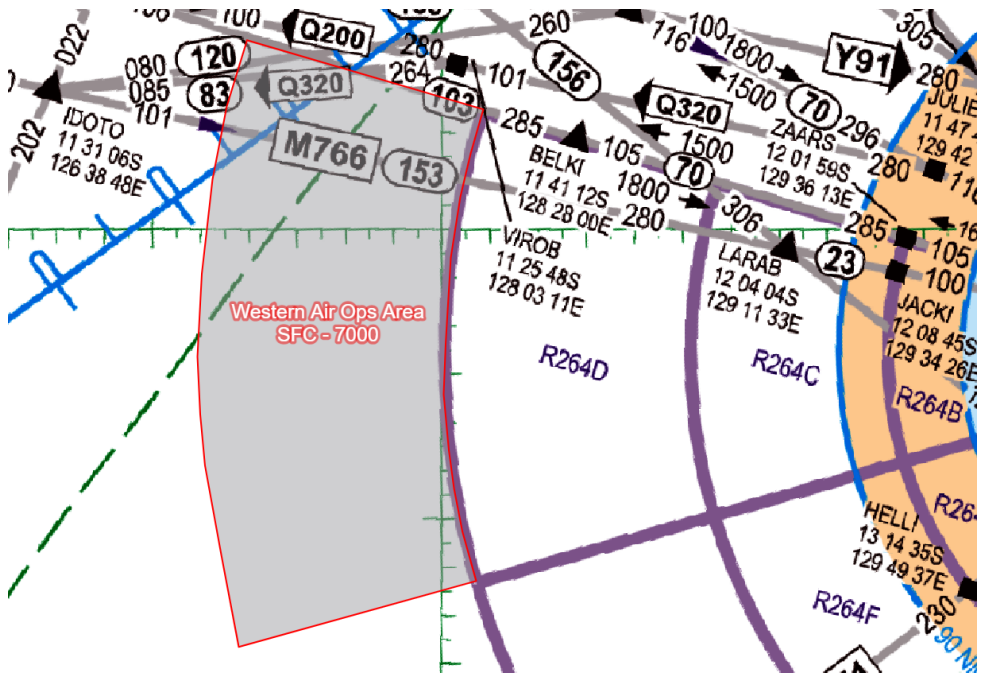


Figure 4. Western Air Ops Area