

**AIP SUPPLEMENT  
(SUP)****H114/24****Effective: 202408252200 UTC**AERONAUTICAL INFORMATION SERVICE,  
AIRSERVICES AUSTRALIA, GPO BOX 367,  
CANBERRA ACT 2601For **DISTRIBUTION** queries, contact:  
Email: [aim.editorial@airservicesaustralia.com](mailto:aim.editorial@airservicesaustralia.com)For **CONTENT** queries regarding this SUP, contact:  
Email: [oar@casa.gov.au](mailto:oar@casa.gov.au) Phone: 02 6217 1222**BLACK SKY AEROSPACE (BSA)  
ROCKET LAUNCHING ACTIVITIES  
FUNNY FARM, QUEENSLAND****1. INTRODUCTION**

- 1.1 This SUP cancels and replaces SUP H85/24 on 26 August 2024, with amendments to para 3.2.1.
- 1.2 Black Sky Aerospace (BSA) conduct regular rocket launches from their launch facility at Funny Farm, Queensland. Low-level horizontal launches are currently managed by activation of a temporary danger area (upper limit 5,000FT AMSL, see Section 2), while vertical launches are managed by activation of a temporary restricted area (variable upper limit, see section 3).

**2. HORIZONTAL ROCKET LAUNCHES**

- 2.1 The following temporary danger area (TDA) is declared to contain horizontal rocket launching activities at Funny Farm:

**YBBB/TDA 'FUNNY FARM'****ROCKET LAUNCHING****LATERAL LIMITS:** Within 3NM radius of 280739S 1494224E**VERTICAL LIMITS:** SFC – 5000FT AMSL**HOURS OF ACTIVITY:** NOTAM**CONTACT:** BSA Operations Manager (0407 398 057)

## 2.2 Airspace Activation

2.2.1 Typical activation times for TDA 'FUNNY FARM' are provided in the following table. For actual activation times operators should check YBBB FIR NOTAM.

Typical TDA 'FUNNY FARM' Activation Timings		
	QLD Local Time (AEST)	Time (UTC)
MON – SUN (inclusive)	0800 – 1700	2200 – 0700

## 3. VERTICAL ROCKET LAUNCHES

3.1 Due to the proximity of R639C to the launch site, two temporary restricted areas (TRA) are declared to manage vertical rocket launching activities at Funny Farm:

**YBBB/TRA 'FUNNYL'**

**ROCKET LAUNCHING**

**LATERAL LIMITS:** Within 2.5NM radius of 280742S 1494206E

**VERTICAL LIMITS:** SFC – FL200

**HOURS OF ACTIVITY:** NOTAM

**CONTROLLING AUTHORITY:** Airservices Australia (07 3866 3224)

**YBBB/TRA 'FUNNYH'**

**ROCKET LAUNCHING**

**LATERAL LIMITS:** Within 7NM radius of 280742S 1494206E

**VERTICAL LIMITS:** SFC – FL450

**HOURS OF ACTIVITY:** NOTAM

**CONTROLLING AUTHORITY:** Airservices Australia (07 3866 3224)

### 3.2 Airspace Activation

3.2.1 Typical activation times for TRA 'FUNNYL' and TRA 'FUNNYH' are provided in the following table. For actual activation times operators should check YBBB FIR NOTAM.

Typical TRA 'FUNNYL' Activation Timings		
	QLD Local Time (AEST)	Time (UTC)
MON – FRI	1000 – 1100	0000 – 0100
	1200 – 1400	0200 – 0400
	1500 – 1600	0500 – 0600

Typical TRA 'FUNNYH' Activation Timings		
	QLD Local Time (AEST)	Time (UTC)
MON – FRI	0800 – 0900	2200 – 2300
SAT – SUN	0800 – 0900	2200 – 2300
	1000 – 1100	0000 – 0100
	1200 – 1400	0200 – 0400
	1500 – 1600	0500 – 0600

## 4. ACCESS TO ROCKET LAUNCH AIRSPACE

4.1 Direct tracking through active TRA may be available and is subject to the status of rocket launching activities. Aircraft should plan in accordance with the diversion routes detailed in section 5 and may expect direct tracking when available.

## 5. DIVERSION ROUTES

5.1 The following routes are restricted during TRA activation windows:

- W353
- Y153
- H652

5.1.1 W353 will be managed tactically by Airservices Australia. Pilots intending to operate on Y153 or H652 should plan in accordance with the diversion routes specified in the following tables.

<b>Affected route</b>	<b>Y153</b>
Use diversion route	KANKO SULMI OVNOM H652
Purpose	Separation from hazardous activities in TRA 'FUNNYL' and TRA 'FUNNYH'

<b>Affected route</b>	<b>H652</b>
Use diversion route	RILGO SULMI OVNOM H652
Purpose	Separation from hazardous activities in TRA 'FUNNYL' and TRA 'FUNNYH'

## 6. CANCELLATION

6.1 This SUP is associated with ongoing rocket launching activities and remains in force until cancelled.

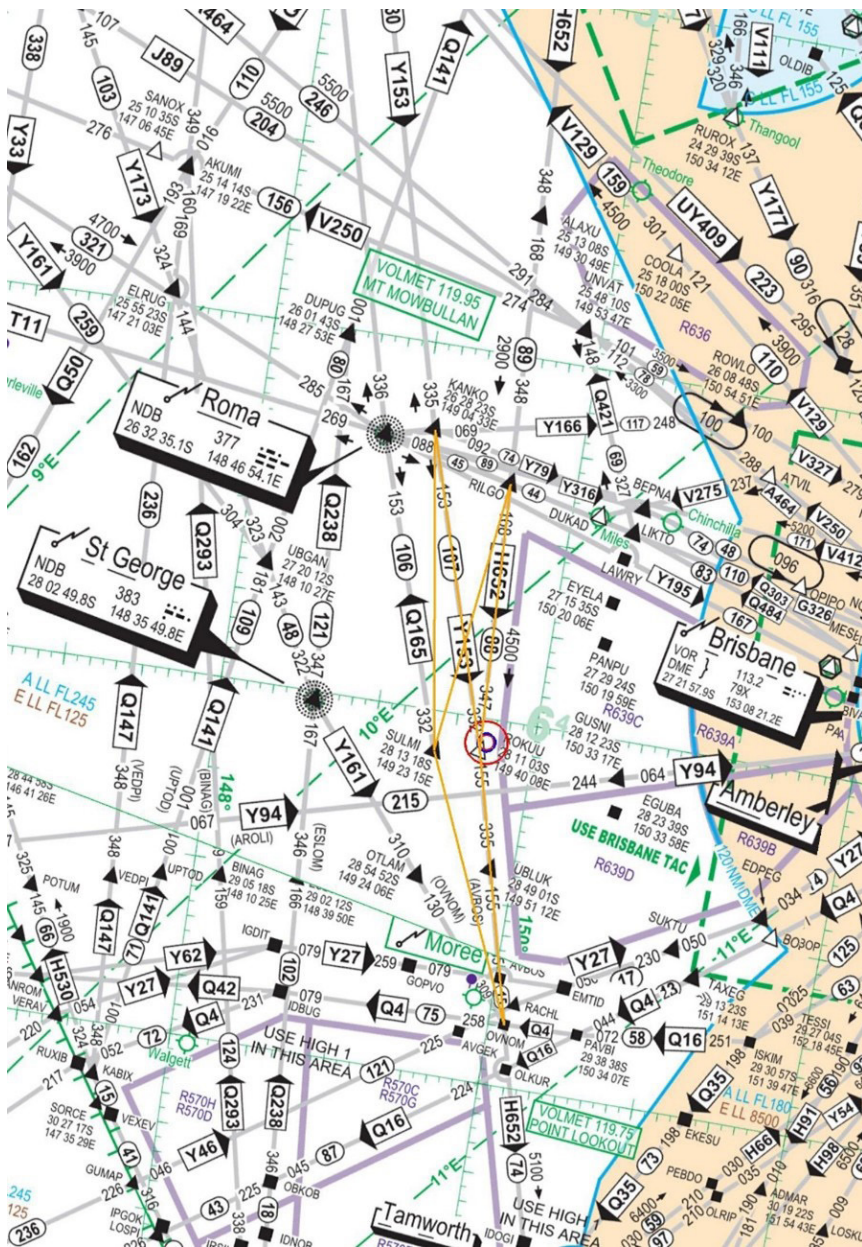
## 7. DISTRIBUTION

7.1 Airservices Australia website only.

## Appendices

1. Temporary SUA areas – ERCH1/3 overlay with diversion routing (and inset)
2. Temporary SUA areas – ERCL3 overlay

**1. Temporary SUA areas – ERCH1/3 overlay with diversion routing (and inset)**





**2. Temporary SUA areas – ERCL3 overlay**

