

**AIP SUPPLEMENT
(SUP)****AIRAC****H111/24****Effective: 202409041600 UTC**

AERONAUTICAL INFORMATION SERVICE,
AIRSERVICES AUSTRALIA, GPO BOX 367,
CANBERRA ACT 2601

For **DISTRIBUTION** queries, contact:
Email: aim_editorial@airservicesaustralia.com

For **CONTENT** queries regarding this SUP, contact:
Email: ifp@airservicesaustralia.com

HOBART (YMHB) AERODROME RWY 12 AND RWY 30 TEMPORARY APPROACH PROCEDURES

1. INTRODUCTION

- 1.1 This AIP SUP cancels and replaces AIP SUP H95/24 with amendments to para 1.4, 1.6 and para 1.7.
- 1.2 This AIP SUP implements temporary approach procedures for RWY 12 and RWY 30 at Hobart (YMHB).
- 1.3 Hobart airport will be conducting runway maintenance works that require temporary threshold displacements of RWY 12 by 829M in stage 3A. RWY 30 threshold will be displaced by 829M in stage 3C. A NOTAM will be issued to indicate when the threshold is displaced, and which stage is active.
- 1.4 New RNP APCH, RNP AR APCH and VOR/DME approach procedures have been designed for use during stages 3A and 3C of the runway works.
Note: RWY 12 approach visibility minima have been calculated on the basis of HIAL not being available during the times of displaced THR operations.
- 1.5 The existing STAR to RWY 12 and RWY 30 procedures remain unchanged and will be used with the procedures in the appendices. DISREGARD APPROACH TRANSITION INSTRUCTION.
- 1.6 The existing SID procedures published in DAP remain available for use during periods of threshold displacement.

- 1.7 The following instrument approaches are not available when the thresholds are displaced:
- ILS-Y or LOC-Y RWY 12
 - ILS-Z or LOC-Z RWY 12
 - VOR-Y RWY 30
- 1.8 Recommended coding sheets for these temporary procedures are available on request. The RF arc centres are existing waypoints and are not included in the table below.

2. DISPLACED THRESHOLDS

RWY	LAT	LONG	ELEV
Stage 3A RWY 12	425000.63S	1473029.49E	12FT
Stage 3C RWY 30	425025.12S	1473102.74E	13FT

3. WAYPOINTS

HBZWT	425000.63S	1473029.49E	MAPt RNP M RWY 12 (AR)
HBTEZ	425025.12S	1473102.74E	MAPt RNP M RWY 30 (AR)

4. STAGES AND ASSOCIATED PROCEDURES

Stage 3A	RNP T RWY 12	RNP M (AR) RWY 12	VOR-T RWY 12
Stage 3C	RNP T RWY 30	RNP M (AR) RWY 30	VOR-T RWY 30

5. CANCELLATION

- 5.1 This SUP will be cancelled when the RWY works are completed.

6. DISTRIBUTION

- 6.1 Airservices Australia website only.

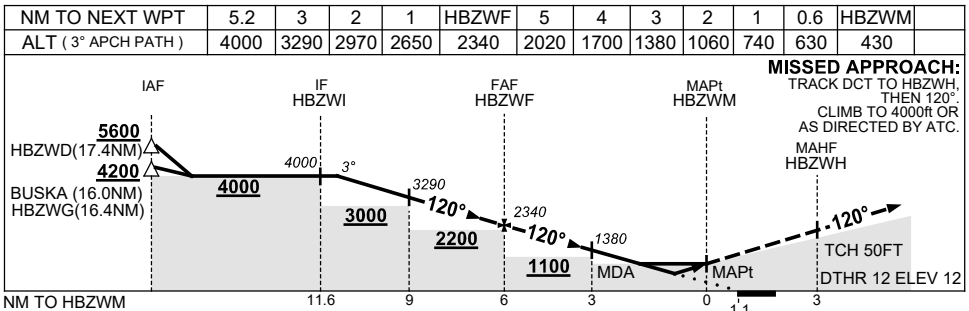
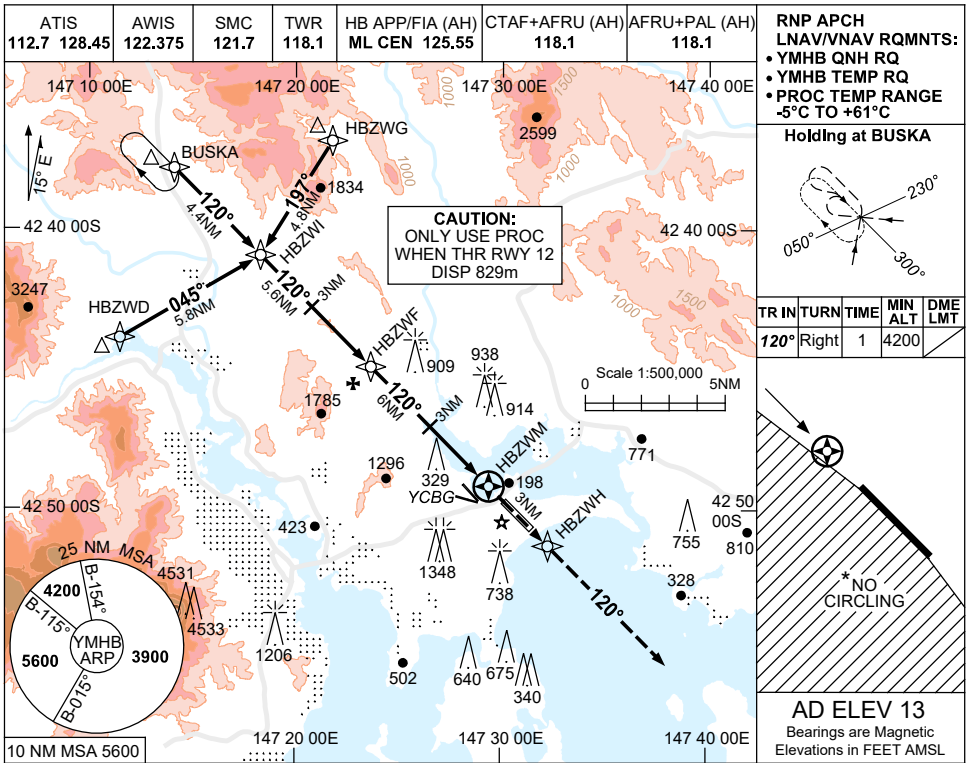
Appendices

1. RNP T RWY 12
2. RNP M RWY 12 (AR)
3. VOR-T RWY 12
4. RNP T RWY 30
5. RNP M RWY 30 (AR)
6. VOR-T RWY 30

**APPENDIX 1
TO SUP H11/24**

USE QNH

**RNP T RWY 12
HOBART, TAS (YMHB)**



CATEGORY	A	B	C	D
LNAV/VNAV		430 (418-2.4)		
LNAV		630 (617-3.5)		
CIRCLING *	1240 (1227-2.4)		1530 (1517-4.0)	1600 (1587-5.0)
ALTERNATE	(1727-4.4)		(2017-6.0)	(2087-7.0)

- NOTES**
- MAX IAS:
INITIAL : 210KT
HOLDING: 200KT.
 - * NO CIRCLING WEST OF RWY 12/30.
 - COLOUR: SEE SPEC NOTICES.

Changes: DTHR, DIST-ALT, LNAV/VNAV MINIMA, NOTE.

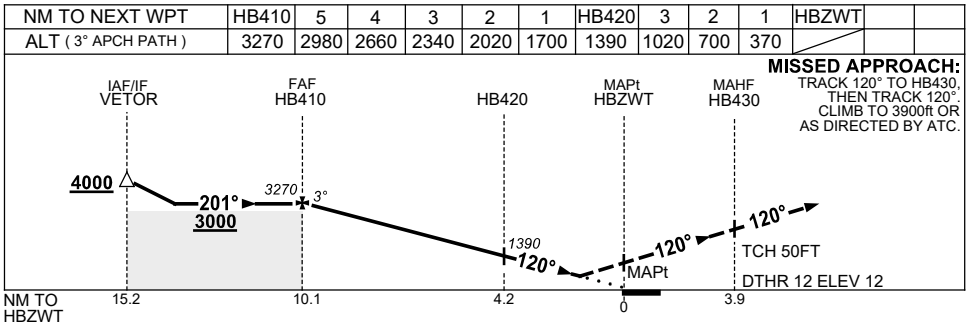
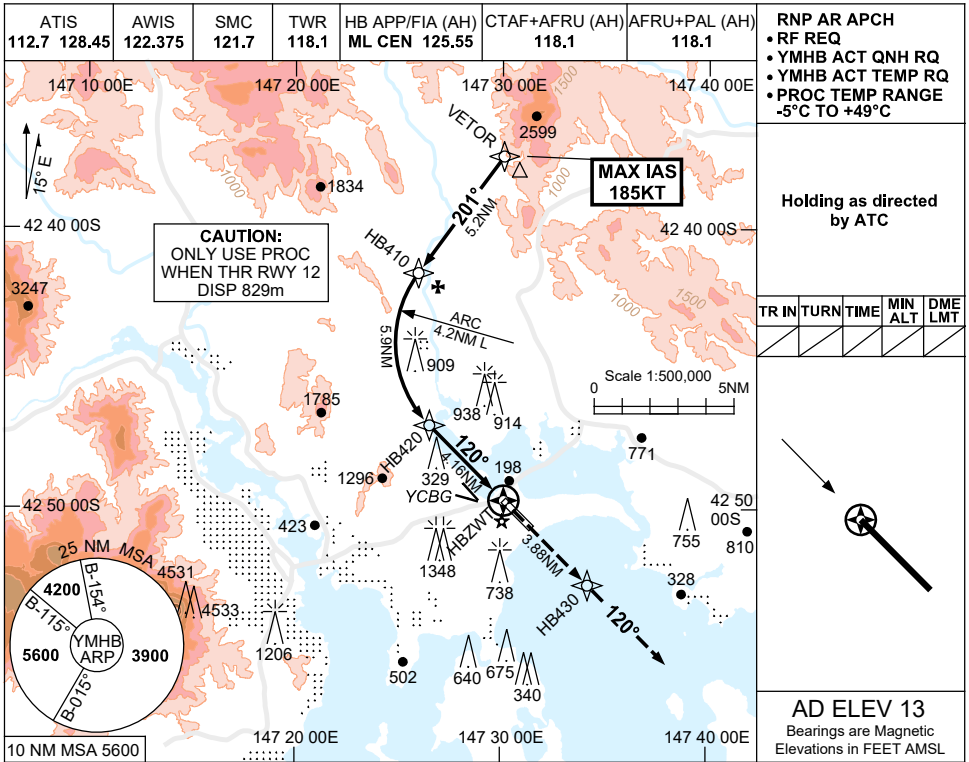
MHBGN98-SUP

FOR CASA APPROVED OPERATORS ONLY RNP-AR APPROACH PROCEDURE

APPENDIX 2 TO SUP H111/24

USE QNH

RNP M RWY 12 (AR)
HOBART, TAS (YMHB)



CATEGORY	A	B	C	D
RNP (0.3)	370 (358-2.0)			
CIRCLING	NOT AUTHORISED			
ALTERNATE	(1727-4.4)		(2017-6.0)	(2087-7.0)

- NOTES**
- MAX IAS: VETOR : 185KT.
 - COLOUR: SEE SPEC NOTICES.

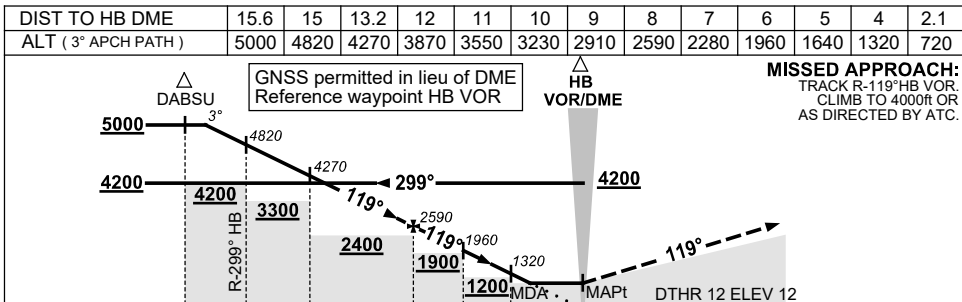
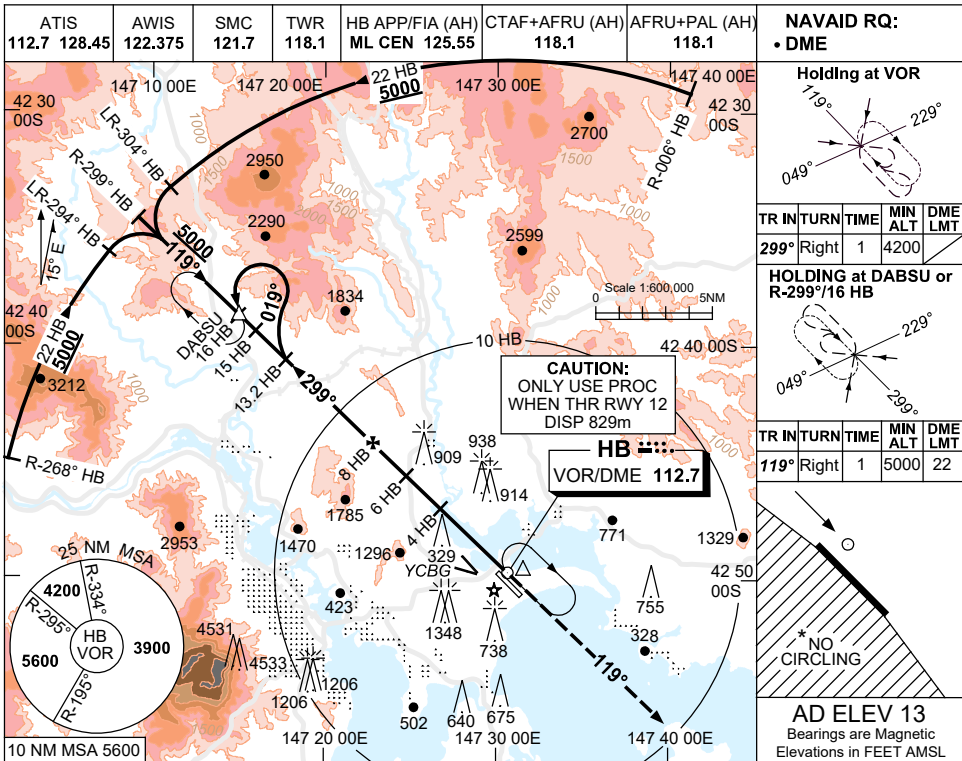
Changes: DTHR, DIST-ALT, RNP MINIMA, NOTE.

MHBGN96-SUP

**APPENDIX 3
TO SUP H111/24**

USE QNH

**VOR-T RWY 12
HOBART, TAS (YMHB)**



CATEGORY	A	B	C	D
S-I VOR/DME	720 (707-4.0)			
CIRCLING *	1240 (1227-2.4)		1530 (1517-4.0)	
ALTERNATE	(1727-4.4)		(2087-7.0)	

- NOTES**
- MAX IAS:
HOLDING AT VOR: 190KT.
INITIAL: CAT C&D 210KT.
 - * NO CIRCLING WEST OF RWY 12/30.
 - COLOUR: SEE SPEC NOTICES.

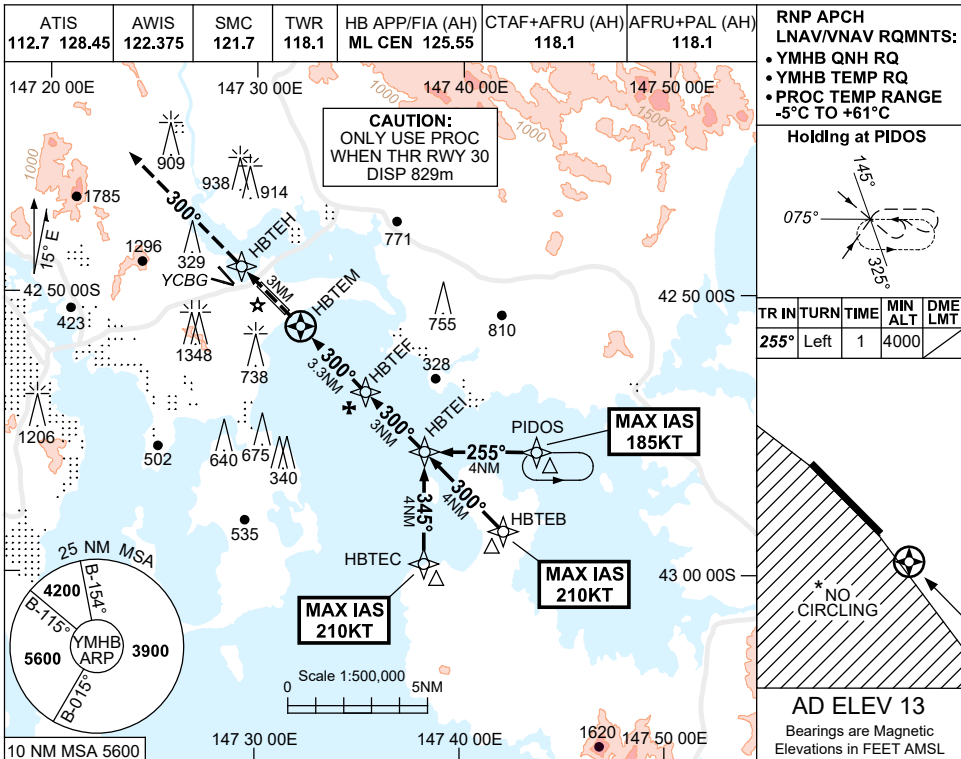
Changes: DTHR, DIST-ALT, S-I MINIMA, NOTE.

MHBV099-SUP

**APPENDIX 4
TO SUP H11/24**

USE QNH

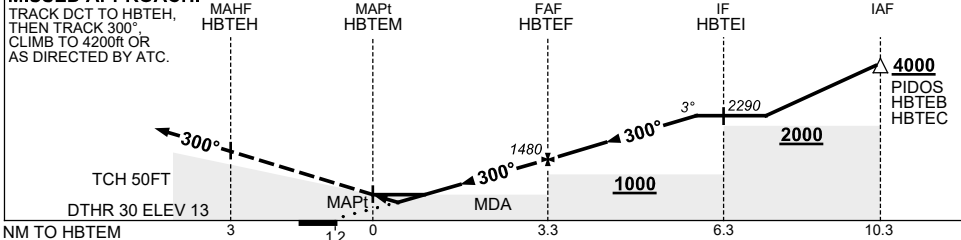
**RNP T RWY 30
HOBART, TAS (YMHB)**



NM TO NEXT WPT	HBTEM	0.2	0.4	0.7	0.8	2	HBTEF	1	2	2.6			
ALT (3° APCH PATH)		500	550	640	690	1070	1480	1800	2120	2290			

MISSSED APPROACH:

TRACK DCT TO HBTEH, THEN TRACK 300° CLIMB TO 4200ft OR AS DIRECTED BY ATC.



NOTES

1. MAX IAS:
PIDOS : 185KT
HBTEB : 210KT
HBTEC : 210KT.
- * 2. NO CIRCLING WEST OF RWY 12/30.
3. COLOUR: SEE SPEC NOTICES.

CATEGORY	A	B	C	D
LNAV/VNAV (2.5% MAP)		640 (627-3.6)		
LNAV/VNAV (3.5% MAP)		500 (487-2.8)		
LNAV (2.5% MAP)		690 (677-3.9)		
LNAV (3.2% MAP)		550 (537-3.0)		
CIRCLING *	1240 (1227-2.4)	1530 (1517-4.0)	1600 (1587-5.0)	
ALTERNATE	(1727-4.4)	(2017-6.0)	(2087-7.0)	

Changes: DTHR, DIST-ALT, LNAV/VNAV MINIMA, NOTE.

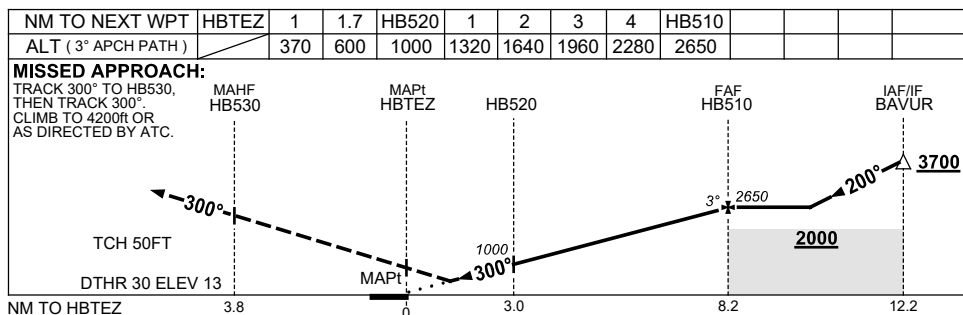
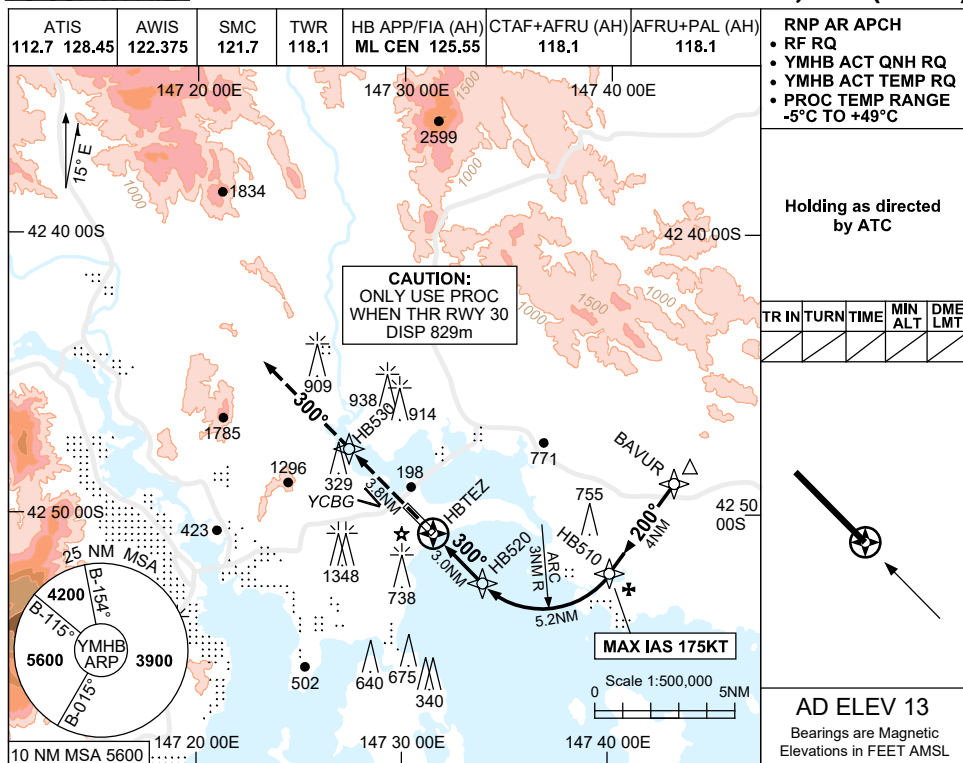
MHBGN97-SUP

FOR CASA APPROVED OPERATORS ONLY RNP-AR APPROACH PROCEDURE

**APPENDIX 5
TO SUP H111/24**

USE QNH

**RNP M RWY 30 (AR)
HOBART, TAS (YMHB)**



CATEGORY	A	B	C	D
RNP (0.3)(2.5% MAP)	600 (587-3.3)			
RNP (0.3)(4.2% MAP)	370 (357-2.0)			
CIRCLING	NOT AUTHORISED			
ALTERNATE	(1727-4.4)		(2017-6.0)	(2087-7.0)

- NOTES**
- MAX IAS:
HB510 : 175KT.
 - COLOUR: SEE SPEC NOTICES.

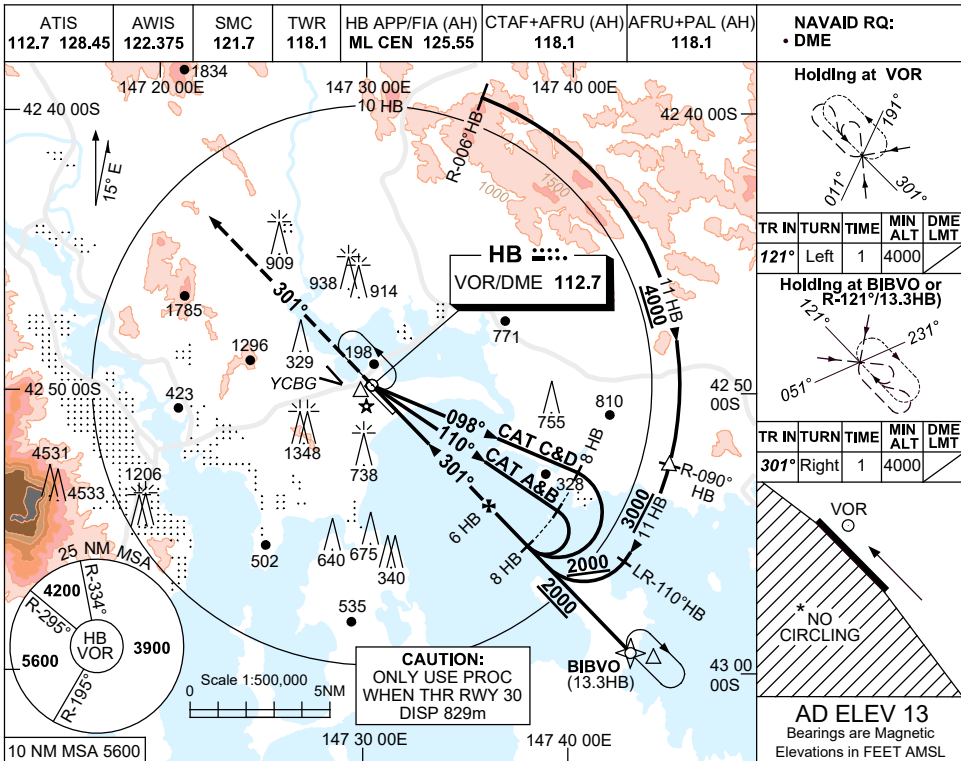
Changes: DTHR, DIST-ALT, NOTE.

MHBGN94-SUP

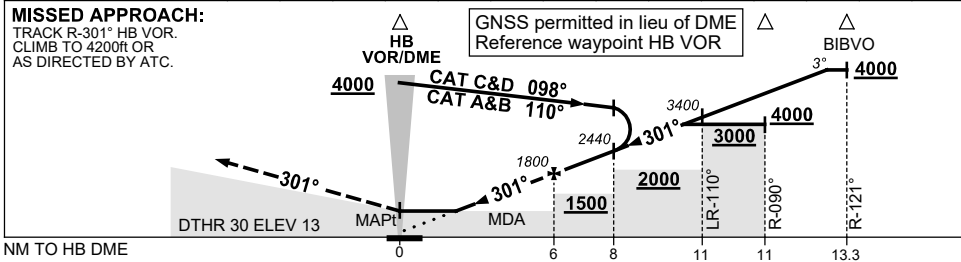
**APPENDIX 6
TO SUP H11/24**

USE QNH

**VOR-T RWY 30
HOBART, TAS (YMHB)**



DIST TO HB DME	2.4	3	4	5	6	7	8	9	10	11	12	12.9		
ALT (3° APCH PATH)	660	850	1170	1490	1800	2120	2440	2760	3080	3400	3720	4000		



NOTES

1. MAX IAS:
HOLDING VOR: 190KT.
INITIAL:
CAT C&D 210KT.
- *2. NO CIRCLING WEST
OF RWY 12/30.
3. MIN MAP GRAD 5.2%
CTA CONTAINMENT.
4. COLOUR: SEE
SPEC NOTICES.

CATEGORY	A	B	C	D
S-I VOR/DME	660 (647-3.7)			
CIRCLING *	1240 (1227-2.4)	1530 (1517-4.0)		1600 (1587-5.0)
ALTERNATE	(1727-4.4)		(2087-7.0)	

Changes: DTHR, DIST-ALT, NOTE.

MHBVO97-SUP