

**AIP SUPPLEMENT  
(SUP)****AIRAC****H107/24****Effective: 202409041600 UTC**

AERONAUTICAL INFORMATION SERVICE,  
AIRSERVICES AUSTRALIA, GPO BOX 367,  
CANBERRA ACT 2601

For **DISTRIBUTION** queries, contact:  
Email: [aim.editorial@airservicesaustralia.com](mailto:aim.editorial@airservicesaustralia.com)

For **CONTENT** queries regarding this SUP, contact:  
Email: [ifp@airservicesaustralia.com](mailto:ifp@airservicesaustralia.com)

**ALICE SPRINGS (YBAS) REVISED  
VOR RWY 12 APPROACH CHART****1. INTRODUCTION**

- 1.1 This SUP corrects the erroneous change to VOR RWY 12 approach procedure published in DAP 180. The IAF at 15 DME/R301 AS VOR/DME was incorrectly labelled "LISZT".
- 1.2 The corrected VOR RWY 12 approach chart is provided in Appendix 1.

**2. IMPLEMENTATION**

- 2.1 The VOR RWY 12 procedure in Appendix 1 becomes effective 202409041600 UTC and replaces the same procedure published in DAP.

**3. CANCELLATION**

- 3.1 This SUP will be cancelled when the corrected chart is incorporated into AIP expected to be in DAP amendment 181, effective 28 November 2024.

**4. DISTRIBUTION**

- 4.1 Airservices Australia website only.

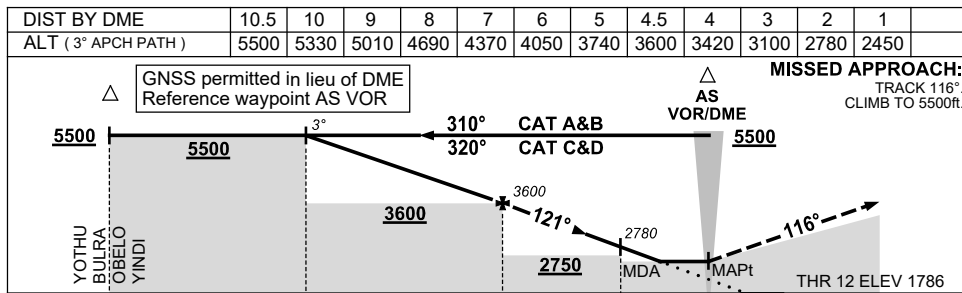
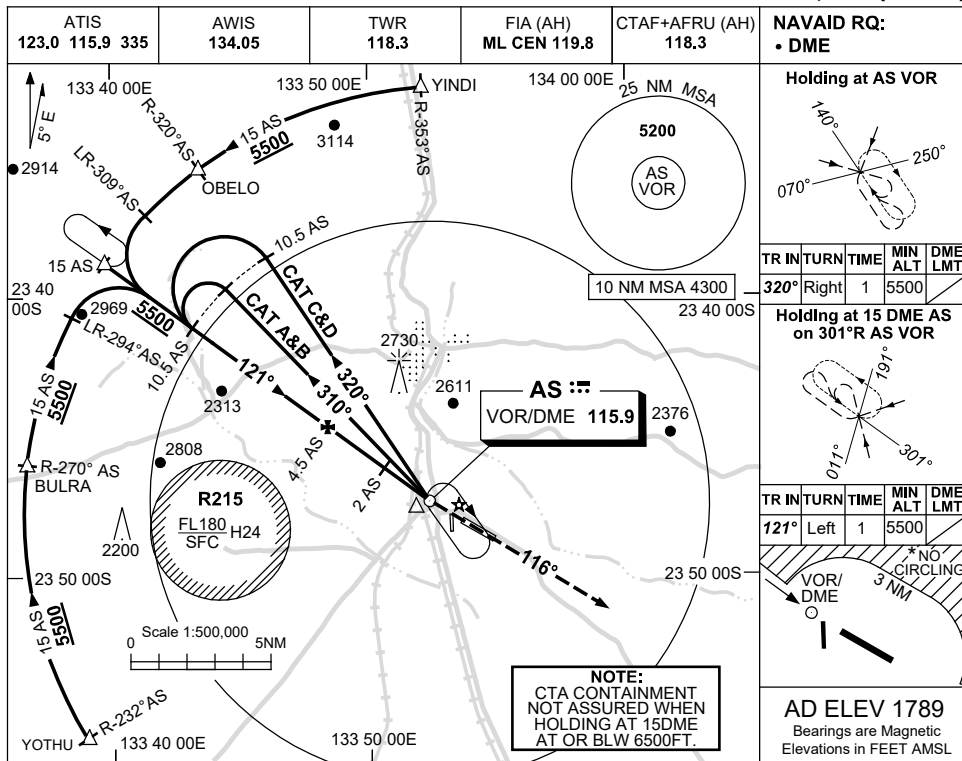
**Appendix**

1. YBAS VOR RWY 12 Approach Chart.

**APPENDIX 1  
TO SUP H107/24**

**USE QNH**

**VOR RWY 12  
ALICE SPRINGS, NT (YBAS)**



CATEGORY	A	B	C	D
S-I VOR/DME	2450 (661-2.9)			
CIRCLING *	2570 (781-2.4)		2990 (1201-4.0)	
ALTERNATE ‡	(1281-4.4)		(1701-7.0)	

**NOTES**

- MAX IAS:  
INITIAL : 210KT.  
HOLDING : 185KT.  
HLDG NOT ABOVE FL120.
- SPECIAL ALTN MNM 800/4.0KM.
- NO CIRCLING N OF RWY 12 / 30 BEYOND 3NM.

Changes: DELETED WPT LISZT.

BASVO01-SUP