

**AIP SUPPLEMENT
(SUP)****H101/24****Effective: 202408221400 UTC**

AERONAUTICAL INFORMATION SERVICE,
AIRSERVICES AUSTRALIA, GPO BOX 367,
CANBERRA ACT 2601

For **DISTRIBUTION** queries, contact:
Email: aim.editorial@airservicesaustralia.com

For **CONTENT** queries regarding this SUP, contact:
Email: adf.airspace@defence.gov.au

**SCHERGER MILITARY ACTIVITY
23 – 28 AUGUST 2024****1. INTRODUCTION**

- 1.1 Elements of Australian and international military forces will be conducting military activities over the period 23 - 28 August 2024 in the vicinity of RAAF Base Scherger.
- 1.2 Activities include the activation of a Temporary Restricted Area encompassing Scherger Aerodrome (YBSG) as well as partial activations of restricted areas surrounding RAAF Base Scherger.
- 1.3 This AIP SUP describes the airspace, timings, access and procedures associated with this activity.

2. AIRSPACE

- 2.1 To facilitate non participating traffic in and out of Weipa (YBWP), a Temporary Restricted Area (TRA) of reduced dimensions will be activated instead of the YBSG Control Zone. This TRA will be activated via Brisbane FIR (YBBB) NOTAM:

TRA 'SCHERGER'

Conditional Status: RA2

Military Flying

Lateral Limits: 122246S 1420145E then along the clockwise arc of a circle radius 15.00NM centre 123726S 1420514E (YBSG/AD) - 125059S 1421156E - 124112S 1420151E then along the clockwise arc of a circle radius 5.00NM centre 123726S 1420514E (YBSG/AD) - 123638S 1420011E - 122246S 1420145E

Vertical Limits: SFC – 4000

Hours of Activity: NOTAM

Controlling Authority: 44WG Mobile Air Operations Team, (+61) 437 714 590

- 2.2 TRA 'SCHERGER' will be activated for up to 8 hours daily over the period 23 – 28 August 2024 inclusive. Activation will occur predominantly during periods of daylight, but may extend into the night.
- 2.3 Refer to Appendix 1 for a diagram of TRA 'SCHERGER'.
- 2.4 R605AB and R607A will be activated by NOTAM, with partial lateral dimensions in accordance with the following dimensions:

R605AB PARTIAL

Conditional Status: RA2

Military Flying

Lateral Limits: 115937S 1415125E – 122227S 1420650E – 123726S 1420514E (YBSG/AD) – 125202S 1412705E – Then along the clockwise arc of a circle radius 40.00NM centre 123726S 1420514E (YBSG/AD) – 115937S 1415125E

Vertical Limits: 4000 – FL245

Hours of Activity: NOTAM

Controlling Authority: 44WG Mobile Air Operations Team

R607A PARTIAL

Conditional Status: RA2

Military Flying

Lateral Limits: 112121S 1403014E – 110724S 1411607E – 115937S 1415125E – Then along the counter clockwise arc of a circle radius 40.00NM centre 123726S 1420514E (YBSG/AD) – 125202S 1412705E – 132101S 1401036E – then along the clockwise arc of a circle radius 120.00NM centre 123726S 1420514E (YBSG/AD) – 112121S 1403014E

Vertical Limits: FL125 – FL245

Hours of Activity: NOTAM

Controlling Authority: 44WG Mobile Air Operations Team

- 2.5 Refer to Appendix 2 for a diagram of TRA 'SCHERGER', R605AB PARTIAL and R607A PARTIAL.

3. ACCESS TO SCHERGER AIRSPACE

- 3.1 Access through active restricted areas described in para 2.1 and 2.4, by non-exercise aircraft, is not available except for:
- 3.1.1 Aircraft operating in the preservation of life or property (SAR, MED, POL, FFR),
 - 3.1.2 Aircraft with a declared emergency,
 - 3.1.3 Border Force operations, and
 - 3.1.4 Aircraft conducting IFP at YBWP in IMC.

- 3.2 Should priority transits of TRA 'SCHERGER' be required, airways clearance must be obtained from the Controlling Authority prior to entry. Pilots expecting a requirement to transit due to weather are requested to contact the Controlling Authority by phone prior to becoming airborne. A Class C service will apply.
- 3.3 The contact details for the controlling authority, 44WG Mobile Air Operations Team, are as follows:
- Callsign: SCHERGER TOWER Frequency: Primary 134.45 MHz, Secondary 119.35 MHz
- Phone: (+61) 437 714 590
- Email: ybsg.atc@defence.gov.au
- 3.4 Prior to exercise start, the ADF Joint Airspace Control Cell (JACC) is available for general airspace enquiries during normal business hours on (02) 6128 4857 or on adf.airspace@defence.gov.au.

4. WEIPA AERODROME (YBWP)

4.1 Weipa CTAF area

- 4.1.1 Aircraft operating in/out of YBWP remaining clear of TRA 'SCHERGER' are to broadcast intentions in accordance with normal CTAF procedures on FREQ 126.7 MHz. Refer to ERSAs for further detail.
- 4.2 Several instrument approach procedures (IAP) will not be available while TRA 'SCHERGER' is active. The affected procedures will be promulgated as unavailable via NOTAM. The unavailable procedures are as follows:

YBWP – Unavailable IFP
CATEGORY C and D circling
10NM and 25NM MSA
YBWP DME or GNSS Arrival Procedure
YBWP VOR-Y RWY 12 and associated holding pattern
YBWP VOR-Z RWY 12
YBWP NDB-Y RWY 12 and associated holding pattern
YBWP NDB-Z RWY 12
YBWP VOR-Y RWY 30 holding pattern
YBWP VOR-Z RWY 30 and associated holding pattern
YBWP RNP RWY 30 and associated holding pattern

5. AIRCRAFT OPERATIONS

5.1 There may be increased military fixed wing traffic operating in the Scherger/Weipa region under Class G procedures. This will include medium and heavy wake turbulence airframes and pilots should remain cognisant of the effects of wake turbulence.

5.2 Route availability

5.2.1 W605 is affected by the activation of R605AB PARTIAL and R607A PARTIAL. Aircraft on this route will be given descent to remain beneath the restricted areas or given diversion south of the area by BN CEN ATC.

6. CANCELLATION

6.1 This SUP is scheduled to self-cancel at 202408281400 UTC.

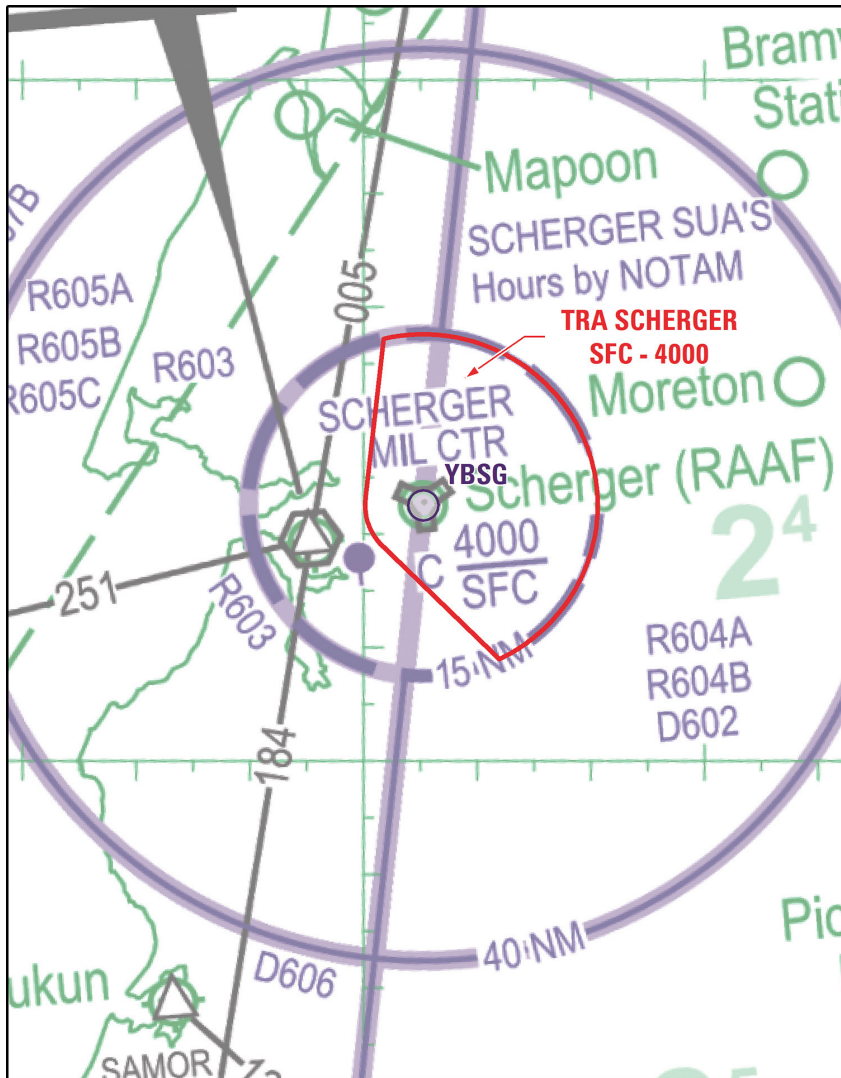
7. DISTRIBUTION

7.1 Airservices Australia website only.

Appendices

1. TRA 'SCHERGER'
2. TRA 'SCHERGER', R605AB PARTIAL, R607A PARTIAL

1. TRA 'SCHERGER'



2. TRA 'SCHERGER', R605AB PARTIAL, R607A PARTIAL

